



# Corrections and Community Supervision

Under Custody Report:

Profile of Under Custody Population  
As of January 1, 2015

**Profile of Under Custody Population  
As of January 1, 2015**

**Table of Contents**

---

	<u>Page</u>
Table of Contents .....	i
Executive Summary .....	ii
Introduction .....	1
Inmate Categories.....	2
Section 1: Demographic Characteristics	
Gender Distribution .....	3
Age Distribution .....	4
Race/Ethnic Distribution .....	5
Region of Commitment .....	6
World Region of Birth.....	7
Marital Status.....	8
Number of Living Children .....	9
Religious Affiliation .....	10
Veteran Status .....	11
Section 2: Criminal History	
Minimum Sentence .....	12
Maximum Sentence .....	14
Commitment Crime.....	16
Felony Sentencing Status.....	18
Prior Adult Criminal Record .....	20
Length of Time Served in Department Custody .....	21
Time to Earliest Release.....	22
Determinate Sentencing .....	23
Education.....	24
Mental Health Indicator .....	25

## Profile of Under Custody Population As of January 1, 2015

### Executive Summary

Characteristics	Category	Inmates Under Custody	Incarcerated Parolees Under Custody	Total Under Custody
Population January 1, 2015		52,541	562	53,103
Gender	Male	95.6%	88.6%	95.5%
	Female	4.4%	11.4%	4.5%
Age	Average Age	38.1	32.2	38.1
Race/Ethnic Status	White	24.1%	49.6%	24.3%
	African-American	48.8%	34.7%	48.7%
	Hispanic	24.1%	12.8%	24.0%
Region	New York City	45.0%	14.6%	44.7%
	Suburban New York	10.7%	10.1%	10.7%
	Upstate	44.3%	75.3%	44.6%
World Region of Birth	Foreign Born	9.8%	2.8%	9.7%
Marital Status	Never Married	65.9%	77.9%	66.1%
Living Children	One or more living children	60.3%	59.4%	60.3%
Religious Affiliation	Catholic	22.8%	32.2%	22.9%
	Protestant	26.5%	23.1%	26.5%
	Islam	11.4%	3.9%	11.3%
Military Service Veteran Status	Veteran	4.3%	5.2%	4.3%
Minimum Sentence	Median Minimum (in months)	67.0	24.0	62.0
	Average Minimum (in months)	123.2	26.9	122.1
Maximum Sentence	Median Maximum (in months)	84.0	42.0	84.0
	Average Maximum (in months)	140.5	46.3	139.5
Crime	Violent Felony	65.3%	7.1%	64.7%
	Drug Offenses	12.2%	38.4%	12.5%
	Property/Other	12.8%	44.0%	13.1%
Felony Sentencing Status	First Felony	56.0%	52.8%	56.0%
	Second Felony	39.7%	47.0%	39.8%
	Persistent Felony	4.2%	0.2%	4.2%
Prior Adult Criminal Record	No Prior Arrest	15.9%	5.3%	15.8%
	Prior Prison Term	34.2%	27.2%	34.1%
Time Served in Department Custody	Median time served (in months)	25.2	1.5	*
	Average time served (in months)	60.7	1.8	*
Time to Earliest Release Date	Median time (in months)	14.5	*	*
	Average time (in months)	51.0	*	*
Determinate Sentence	Drug Offenses - Determinate	*	*	95.6%
	Violent Felony - Determinate	*	*	69.4%
Education	Verified High School Credential	58.8%	61.8%	58.8%
OMH Service Level	OMH Level 1 - 4	18.0%	20.3%	18.0%

\* Not reported

# Profile of Under Custody Population As of January 1, 2015

## INTRODUCTION

### Purpose of the Report

This report presents information on inmates and incarcerated parolees held under Department of Corrections and Community Supervision (DOCCS) custody as of January 1, 2015. It profiles under custody offenders' demographic and criminal history characteristics.

### Additional Offenders Reported Due to the Merger of Corrections and Parole

On April 1, 2011, the former Division of Parole and the former Department of Correctional Services merged to form the Department of Corrections and Community Supervision (DOCCS). In past years the Department's Under Custody reports only included inmates in correctional facilities. Starting with the 2012 report in this series, all inmates are reported including those participating in the Alt 90 or Alt 45 programs<sup>1</sup>. In addition, "incarcerated parolees" (offenders under community supervision who are participating in a parole program at a DOCCS facility) are included, but reported separately. Most "incarcerated parolees" are housed in parole program facilities, while some are housed in correctional facilities. Similarly, most inmates are housed in correctional facilities, while others are housed in parole program facilities. (See next page for a description).

The table below shows the distribution of the various offender subgroups within the under custody population. Descriptions of these different offender subgroups are presented on the next page.

Type of Facility	Inmates	Incarcerated Parolees	Total
Correctional Facilities	52,259	148	52,407
Parole Program Facilities	282	414	696
Total	52,541	562	53,103

---

1. Alt-90 cases have been assigned to an alternative 90-day drug treatment program at Willard Drug Treatment Campus (DTC), while Alt-45 cases have been assigned to an alternative 45-day drug treatment program at Edgecombe Residential Treatment Facility. See next page for a more complete description.

## Inmate Categories

**Inmates in correctional facilities** are inmates who have been sentenced to prison (or returned to prison as a result of a parole violation), are not under community supervision, and are incarcerated in a traditional “prison” facility (N=52,259).

**Incarcerated parolees in correctional facilities** are parolees who are under community supervision and have been incarcerated in order to participate in a treatment program at a parole program facility (e.g. Willard Drug Treatment Campus, Edgecombe Residential Treatment Facility). Incarcerated parolees in correctional facilities (N=148) are in one of the following situations: 1) in a reception facility on the way to beginning a treatment program in a parole program facility, 2) in a correctional facility awaiting an outcome hearing by an Administrative Law Judge (ALJ) as a result of being removed from a treatment program at a parole program facility, or 3) are participating in an alternative treatment program due to medical or mental health needs that cannot be met at the designated parole program facility.

**Inmates in parole program facilities** are returned parole violators who are participating in an alternative drug treatment program. These inmates were revoked and given a time assessment by an ALJ that represents a period of time that they must spend in prison. However, in lieu of serving the full amount of time in prison, these offenders were offered the opportunity to participate in a drug treatment program and they have volunteered to do so. If they successfully complete the program (either 90 days at Willard Drug Treatment Campus or 45 days at Edgecombe Residential Treatment Facility), these offenders will be released from incarceration at the completion of the program and restored to community supervision. If they do not successfully complete the drug treatment program, they must complete the remainder of their time assessment in a correctional facility (N=282).

**Incarcerated parolees in parole program facilities** are parolees who are under community supervision and participating in an assigned treatment program at a parole program facility. Once these incarcerated parolees complete the treatment program, they will be returned to the community to complete their term of community supervision. If these incarcerated parolees do not successfully complete their assigned treatment program, they will be removed from the program and the parole violation process will proceed accordingly. Parolees who fail the Willard Drug Treatment program and parolees who were sent to Edgecombe via special condition are removed from the programs and a violation warrant is issued. Parolees who were sent to Edgecombe with the issuance of a warrant are removed from the program and a final hearing is scheduled (N=414).

## Sections of the Report

The first section of this report describes the demographic characteristics of inmates and incarcerated parolees, including gender, age, race/ethnicity, region of commitment, birthplace, marital status, number of living children, religious affiliation, and veteran status. The second section describes the criminal history of inmates and incarcerated parolees, including information on minimum sentence, commitment crime, second felony sentencing status, prior adult criminal record, length of time served at current facility, length of time in Department custody, time to earliest release, and determinant sentencing status.

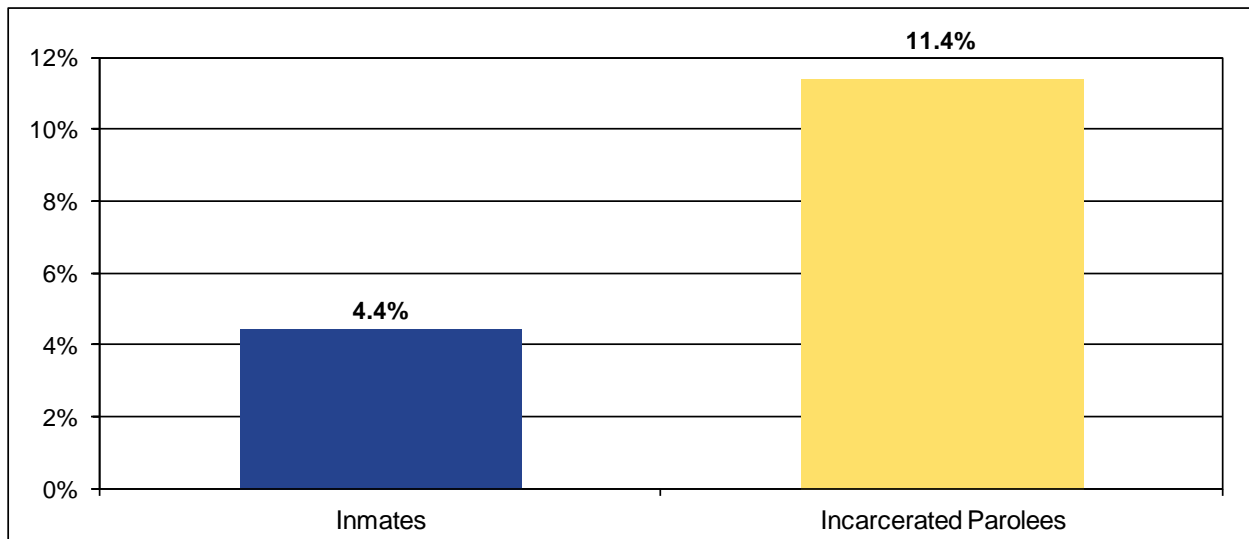
## Section One

### DEMOGRAPHIC CHARACTERISTICS

#### Gender Distribution

Of the 53,103 offenders under custody on January 1, 2015, 50,714 (96%) were male and 2,389 (4%) were female. There was a drop of 1,039 (-2%) total offenders under custody since January 1, 2014. The number of male offenders decreased by 1,015 (-2%) while female offenders decreased by 24 (-1%). Females made up a larger proportion of incarcerated parolees (11%) than inmates (4%).

**Figure 1. Proportion of Females Under Custody by Offender Status**



**Table 1. Gender Distribution and Offender Status;  
Under Custody Population on January 1, 2014 and January 1, 2015**

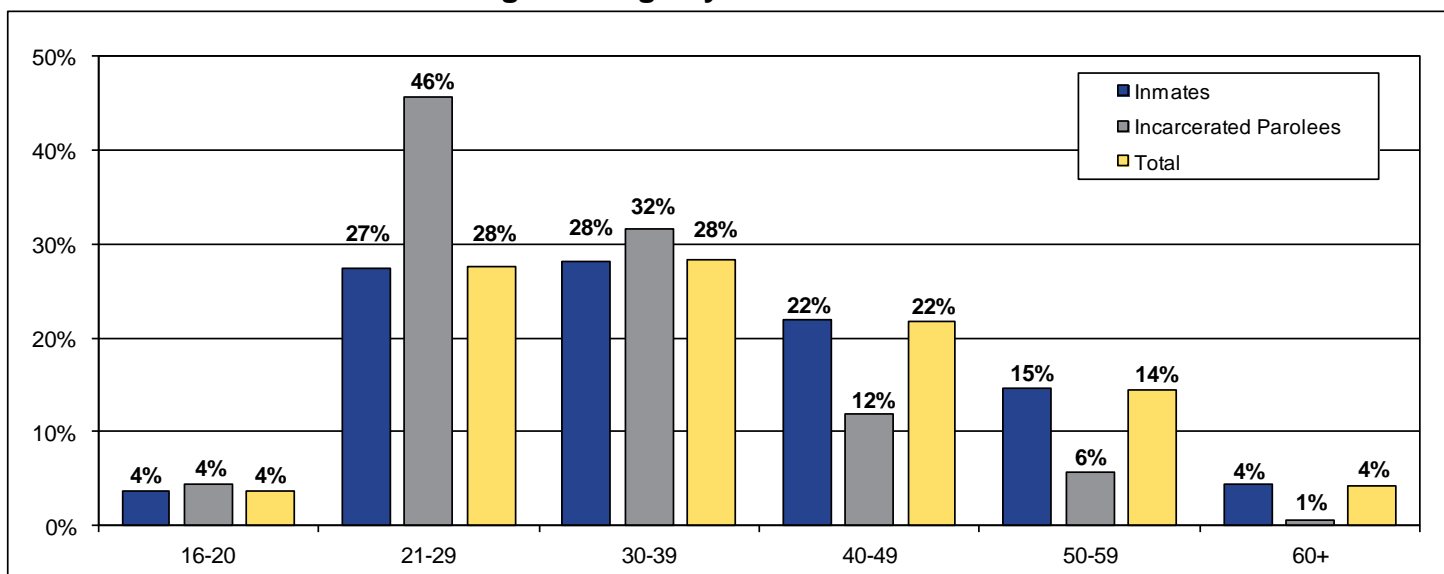
Gender and Offender Status	2014	2015	Numeric Change	Percent Change	Percent of Total 2014	Percent of Total 2015
<b>Inmates</b>						
Male	51,208	50,216	-992	-1.9%	95.6%	95.6%
Female	2,357	2,325	-32	-1.4%	4.4%	4.4%
<b>Total Inmates</b>	<b>53,565</b>	<b>52,541</b>	<b>-1,024</b>	<b>-1.9%</b>	<b>100%</b>	<b>100%</b>
<b>Incarcerated Parolees</b>						
Male	521	498	-23	-4.4%	90.3%	88.6%
Female	56	64	8	14.3%	9.7%	11.4%
<b>Total Parolees</b>	<b>577</b>	<b>562</b>	<b>-15</b>	<b>-2.6%</b>	<b>100%</b>	<b>100%</b>
<b>Grand Total</b>						
Male	51,729	50,714	-1,015	-2.0%	95.5%	95.5%
Female	2,413	2,389	-24	-1.0%	4.5%	4.5%
<b>Total Under Custody</b>	<b>54,142</b>	<b>53,103</b>	<b>-1,039</b>	<b>-1.9%</b>	<b>100%</b>	<b>100%</b>

## Age Distribution

The average age of offenders under custody on January 1, 2015 was 38 years old. On average, inmates were older (38) than incarcerated parolees (32). About 50% of incarcerated parolees were under age 30, while only 31% of the inmates fell into this younger age group.

Offenders under 21 years old numbered 1,912 (4%). Since last year's report, the number of inmates in the under 21 age group decreased by 328 (-15%). Of the 1,912 offenders under age 21, 97 were 16 or 17 years old, 34 fewer than on January 1, 2014. Overall, the number of inmates age 50 and older increased by 398 (4%) between January 1, 2014 and January 1, 2015, while the total population declined by 1,039 (-1.9%).

**Figure 2. Age by Offender Status**



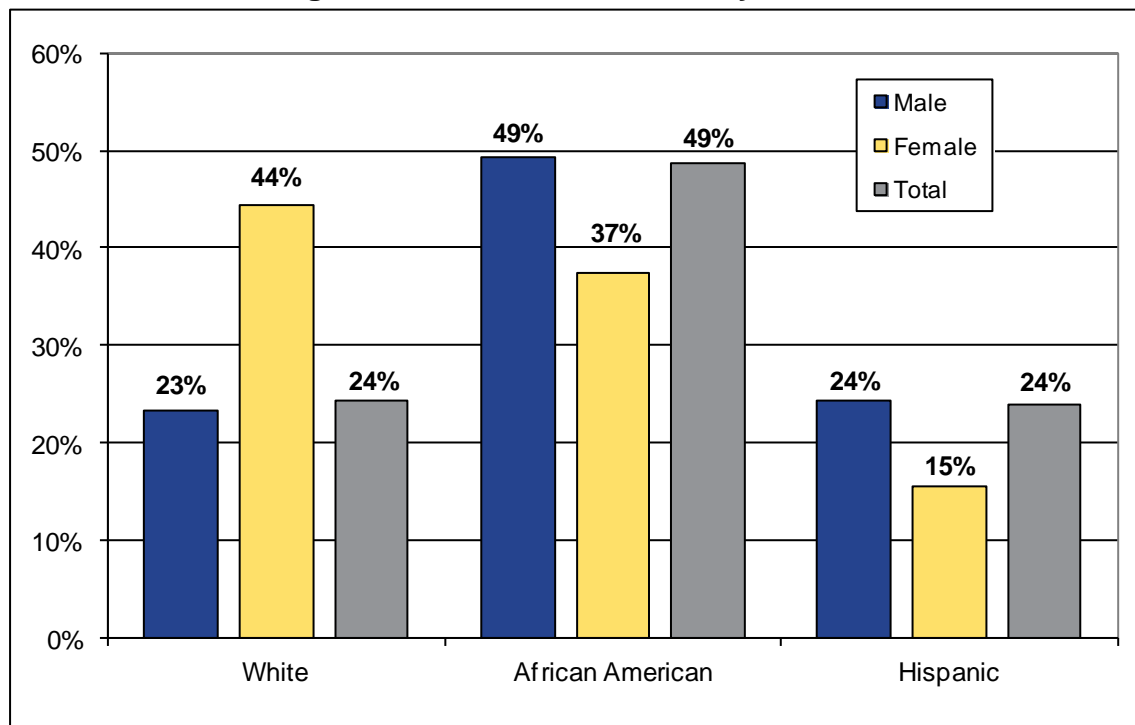
**Table 2. Age by Gender and by Offender Status;  
Under Custody Population on January 1, 2015**

Age by Gender	16-20	21-29	30-39	40-49	50-59	60+	Total	Average
Male	1,846	13,989	14,311	11,023	7,351	2,194	50,714	38.1
Female	66	685	697	553	313	75	2,389	37.6
<b>Total</b>	<b>1,912</b>	<b>14,674</b>	<b>15,008</b>	<b>11,576</b>	<b>7,664</b>	<b>2,269</b>	<b>53,103</b>	<b>38.1</b>
Male	3.6%	27.6%	28.2%	21.7%	14.5%	4.3%	100.0%	
Female	2.8%	28.7%	29.2%	23.1%	13.1%	3.1%	100.0%	
<b>Total</b>	<b>3.6%</b>	<b>27.6%</b>	<b>28.3%</b>	<b>21.8%</b>	<b>14.4%</b>	<b>4.3%</b>	<b>100.0%</b>	
Age by Offender Status								
Inmates	1,887	14,417	14,830	11,509	7,632	2,266	52,541	38.1
Incarcerated Parolees	25	257	178	67	32	3	562	32.2
<b>Total Under Custody</b>	<b>1,912</b>	<b>14,674</b>	<b>15,008</b>	<b>11,576</b>	<b>7,664</b>	<b>2,269</b>	<b>53,103</b>	<b>38.1</b>
Inmates	3.6%	27.4%	28.2%	21.9%	14.5%	4.3%	100.0%	
Incarcerated Parolees	4.4%	45.7%	31.7%	11.9%	5.7%	0.5%	100.0%	
<b>Total Under Custody</b>	<b>3.6%</b>	<b>27.6%</b>	<b>28.3%</b>	<b>21.8%</b>	<b>14.4%</b>	<b>4.3%</b>	<b>100.0%</b>	

## Race/Ethnic Distribution

Almost half (49%) of the total offenders under custody on January 1, 2015 were African-American, while just under a quarter were Hispanic and another quarter identified as White. A larger proportion of the female under custody population was White (44%) compared to the male under custody population (23%). The incarcerated parolee population was more likely than the inmate population to be White (50% vs. 24%).

**Figure 3. Race/Ethnic Status by Gender**



**Table 3. Race/Ethnic Status by Gender or Offender Status;  
Under Custody Population on January 1, 2015**

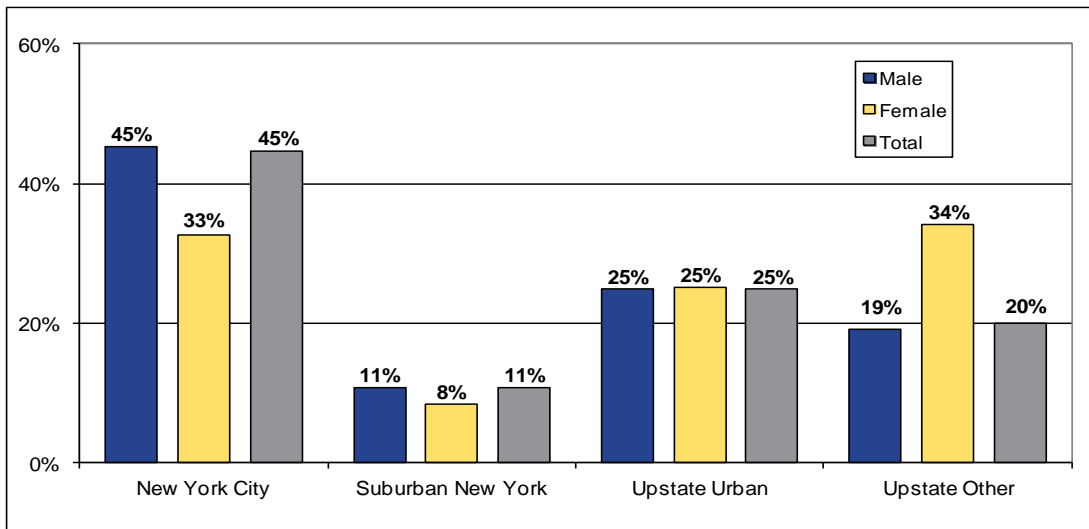
Race/Ethnic Status by Gender	White	African American	Hispanic	Native American	Asian	Other	Unknown	Total
Male	11,859	24,961	12,383	368	226	581	336	50,714
Female	1,061	893	369	27	19	12	8	2,389
Total	12,920	25,854	12,752	395	245	593	344	53,103
Male	23.4%	49.2%	24.4%	0.7%	0.4%	1.1%	0.7%	100.0%
Female	44.4%	37.4%	15.4%	1.1%	0.8%	0.5%	0.3%	100.0%
Total	24.3%	48.7%	24.0%	0.7%	0.5%	1.1%	0.6%	100.0%
Offender Status								
Inmates	12,641	25,659	12,680	391	243	587	340	52,541
Incarcerated Parolees	279	195	72	4	2	6	4	562
Total Under Custody	12,920	25,854	12,752	395	245	593	344	53,103
Inmates	24.1%	48.8%	24.1%	0.7%	0.5%	1.1%	0.6%	100.0%
Incarcerated Parolees	49.6%	34.7%	12.8%	0.7%	0.4%	1.1%	0.7%	100.0%
Total Under Custody	24.3%	48.7%	24.0%	0.7%	0.5%	1.1%	0.6%	100.0%



## Region of Commitment

Nearly half (45%) of the offenders under custody on January 1, 2015 were committed from New York City and 11% were committed from suburban New York (Nassau, Rockland, Suffolk, and Westchester counties). Offenders from Upstate counties with a population center of 50,000 inhabitants or more (Albany, Broome, Erie, Monroe, Oneida, Onondaga, Niagara, Rensselaer, and Schenectady counties) comprised 25% of the under custody population. The remaining 20% were sentenced from the other Upstate counties. Incarcerated parolees were less likely than inmates to have been committed from New York City (15% vs. 45%) and more likely to have been committed from Upstate Other counties (49% vs. 20%). When compared with males under custody, females under custody were less likely to come from New York City (33% vs. 45%) and were more likely to come from Upstate Other (34% vs. 19%).

**Figure 4. Region of Commitment by Gender**



**Table 4. Region of Commitment by Gender or Offender Status; Under Custody Population on January 1, 2015**

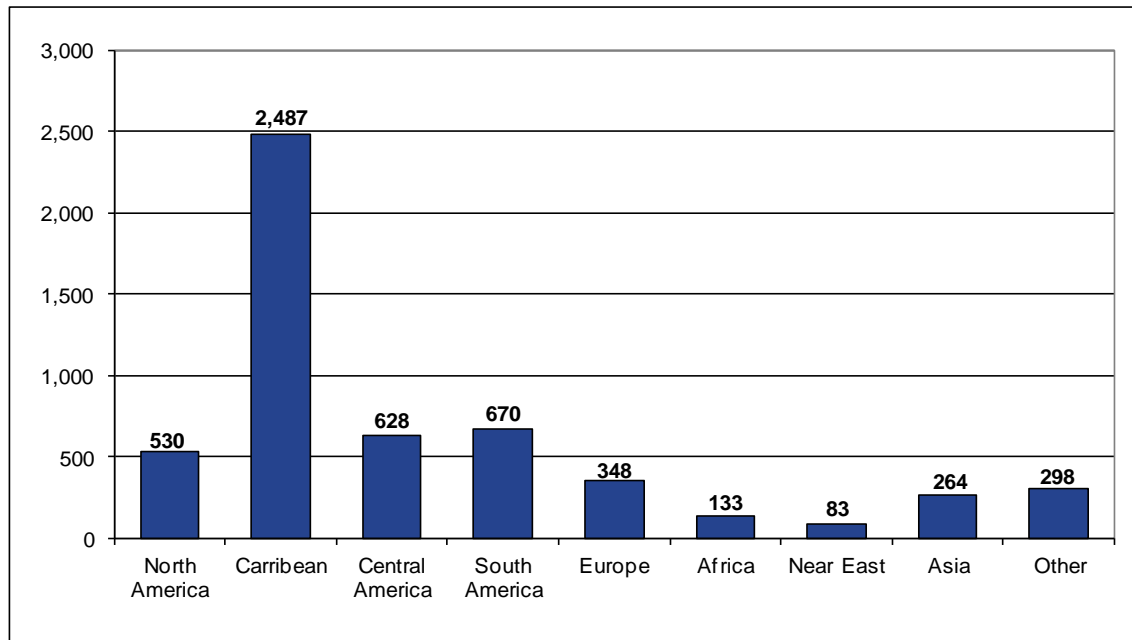
Region by Gender	New York City	Suburban New York	Upstate Urban	Upstate Other	Total*
Male	22,964	5,466	12,568	9,716	50,714
Female	781	198	597	812	2,388
Total	23,745	5,664	13,165	10,528	53,102
Male	45.3%	10.8%	24.8%	19.2%	100.0%
Female	32.7%	8.3%	25.0%	34.0%	100.0%
Total	44.7%	10.7%	24.8%	19.8%	100.0%
<b>Offender Status</b>					
Inmates	23,663	5,607	13,020	10,250	52,540
Incarcerated Parolees	82	57	145	278	562
Total Under Custody	23,745	5,664	13,165	10,528	53,102
Inmates	45.0%	10.7%	24.8%	19.5%	100.0%
Incarcerated Parolees	14.6%	10.1%	25.8%	49.5%	100.0%
Total Under Custody	44.7%	10.7%	24.8%	19.8%	100.0%

\* One inmate is from out of state, so the total for this table differs from the other tables in this report.

## World Region of Birth

Ninety percent (90%) of offenders under custody were born in the United States or a United States Territory. The other 10% or 5,171 reported birth in a foreign country. Of the offenders who reported birth in a foreign country, 48% or 2,487 were from one of the island nations in the Caribbean basin.<sup>2</sup> Among inmates, 9.8% or 5,155 were foreign-born while only 2.8% or 16 of incarcerated parolees were foreign-born.

**Figure 5. World Region of Birth**



**Table 5. World Region of Birth; Under Custody Population on January 1, 2015**

World Region by Gender	United States*	North America	Caribbean	Central America	South America	Europe	Africa	Near East	Asia	South Pacific	Unknown	Total
Male	45,465	518	2,409	614	647	316	130	80	255	24	256	50,714
Female	2,197	12	78	14	23	32	3	3	9	4	14	2,389
<b>Total</b>	<b>47,662</b>	<b>530</b>	<b>2,487</b>	<b>628</b>	<b>670</b>	<b>348</b>	<b>133</b>	<b>83</b>	<b>264</b>	<b>28</b>	<b>270</b>	<b>53,103</b>
Male	89.6%	1.0%	4.8%	1.2%	1.3%	0.6%	0.3%	0.2%	0.5%	0.0%	0.5%	100.0%
Female	92.0%	0.5%	3.3%	0.6%	1.0%	1.3%	0.1%	0.1%	0.4%	0.2%	0.6%	100.0%
<b>Total</b>	<b>89.8%</b>	<b>1.0%</b>	<b>4.7%</b>	<b>1.2%</b>	<b>1.3%</b>	<b>0.7%</b>	<b>0.3%</b>	<b>0.2%</b>	<b>0.5%</b>	<b>0.1%</b>	<b>0.5%</b>	<b>100.0%</b>
<b>Offender Status</b>												
Inmates	47,119	530	2,481	628	669	340	133	83	264	27	267	52,541
Incarcerated Parolees	543	0	6	0	1	8	0	0	0	1	3	562
<b>Total Under Custody</b>	<b>47,662</b>	<b>530</b>	<b>2,487</b>	<b>628</b>	<b>670</b>	<b>348</b>	<b>133</b>	<b>83</b>	<b>264</b>	<b>28</b>	<b>270</b>	<b>53,103</b>
Inmates	89.7%	1.0%	4.7%	1.2%	1.3%	0.6%	0.3%	0.2%	0.5%	0.1%	0.5%	100.0%
Incarcerated Parolees	96.6%	0.0%	1.1%	0.0%	0.2%	1.4%	0.0%	0.0%	0.0%	0.2%	0.5%	100.0%
<b>Total Under Custody</b>	<b>89.8%</b>	<b>1.0%</b>	<b>4.7%</b>	<b>1.2%</b>	<b>1.3%</b>	<b>0.7%</b>	<b>0.3%</b>	<b>0.2%</b>	<b>0.5%</b>	<b>0.1%</b>	<b>0.5%</b>	<b>100.0%</b>

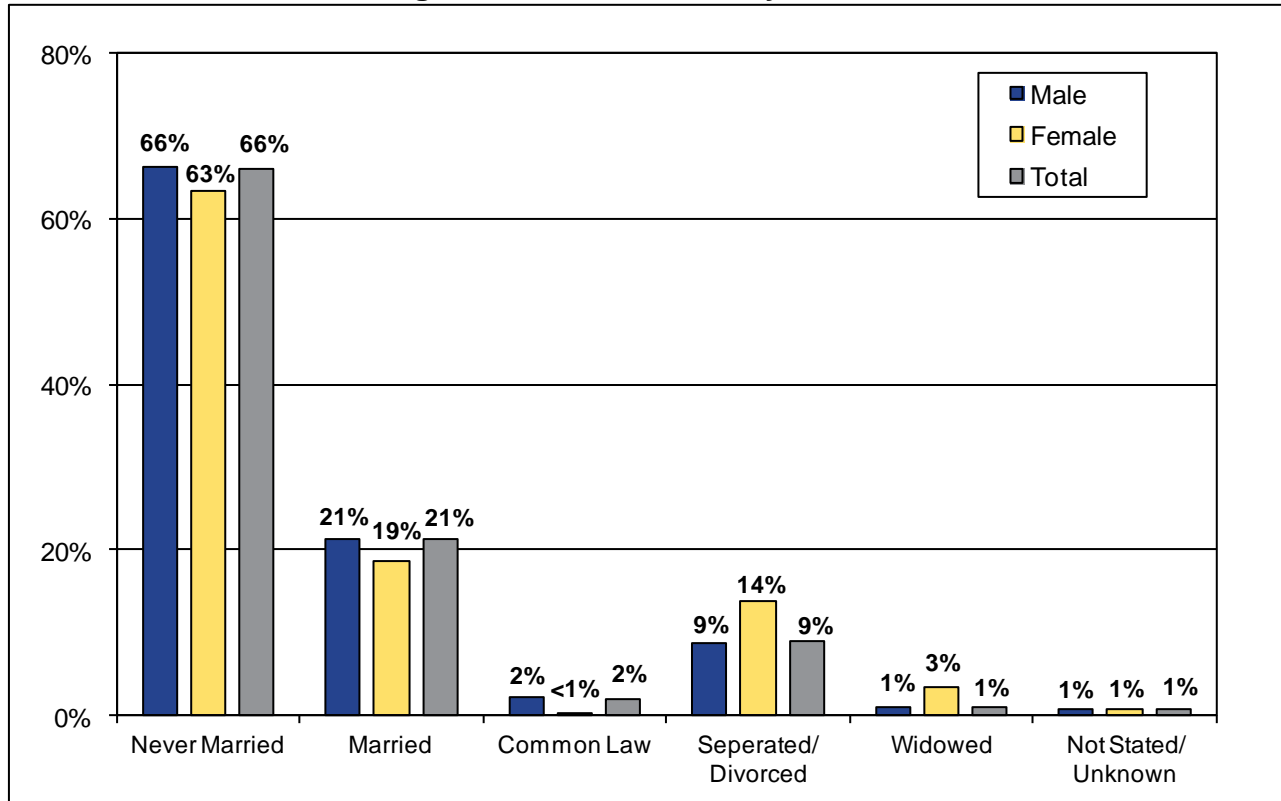
\* Includes offenders committed from United States Territories.

2. For additional information on foreign born inmates see "The Foreign Born Under Custody Population and the Institutional Removal Program" (2013), New York State Department of Corrections and Community Supervision, Albany, New York 12226. This report is on the DOCCS' website at: [http://www.doccs.ny.gov/Research/Reports/2014/ForeignBorn\\_IRP\\_Report\\_2013.pdf](http://www.doccs.ny.gov/Research/Reports/2014/ForeignBorn_IRP_Report_2013.pdf)

## Marital Status

Two-thirds (66%) of the under custody population reported never being married. The proportion was higher (78%) for incarcerated parolees.

**Figure 6. Marital Status by Gender**



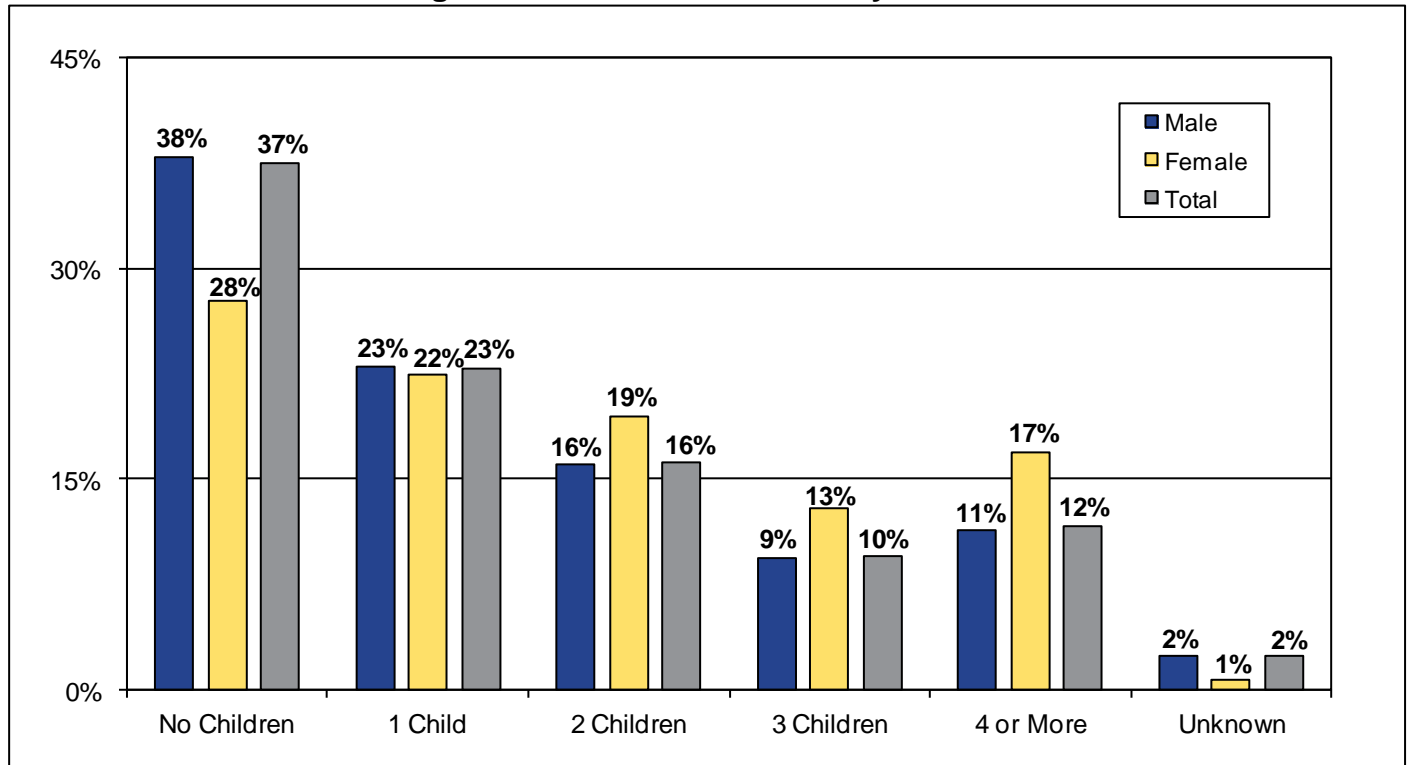
**Table 6. Marital Status; Under Custody Population on January 1, 2015**

Marital Status by Gender	Never Married	Married	Common Law	Separated/Divorced	Widowed	Not Stated/Unknown	Total
Male	33,569	10,814	1,076	4,368	474	413	50,714
Female	1,514	445	7	328	80	15	2,389
Total	35,083	11,259	1,083	4,696	554	428	53,103
Male	66.2%	21.3%	2.1%	8.6%	0.9%	0.8%	100.0%
Female	63.4%	18.6%	0.3%	13.7%	3.3%	0.6%	100.0%
Total	66.1%	21.2%	2.0%	8.8%	1.0%	0.8%	100.0%
<b>Offender Status</b>							
Inmates	34,645	11,196	1,079	4,647	550	424	52,541
Incarcerated Parolees	438	63	4	49	4	4	562
Total Under Custody	35,083	11,259	1,083	4,696	554	428	53,103
Inmates	65.9%	21.3%	2.1%	8.8%	1.0%	0.8%	100.0%
Incarcerated Parolees	77.9%	11.2%	0.7%	8.7%	0.7%	0.7%	100.0%
Total Under Custody	66.1%	21.2%	2.0%	8.8%	1.0%	0.8%	100.0%

## Number of Living Children

Among inmates reporting living children, the majority of offenders under custody (60%) reported that they had at least one living child at the time of admission to the Department. Women were more likely than men to report having a living child.

**Figure 7. Number of Children by Gender**



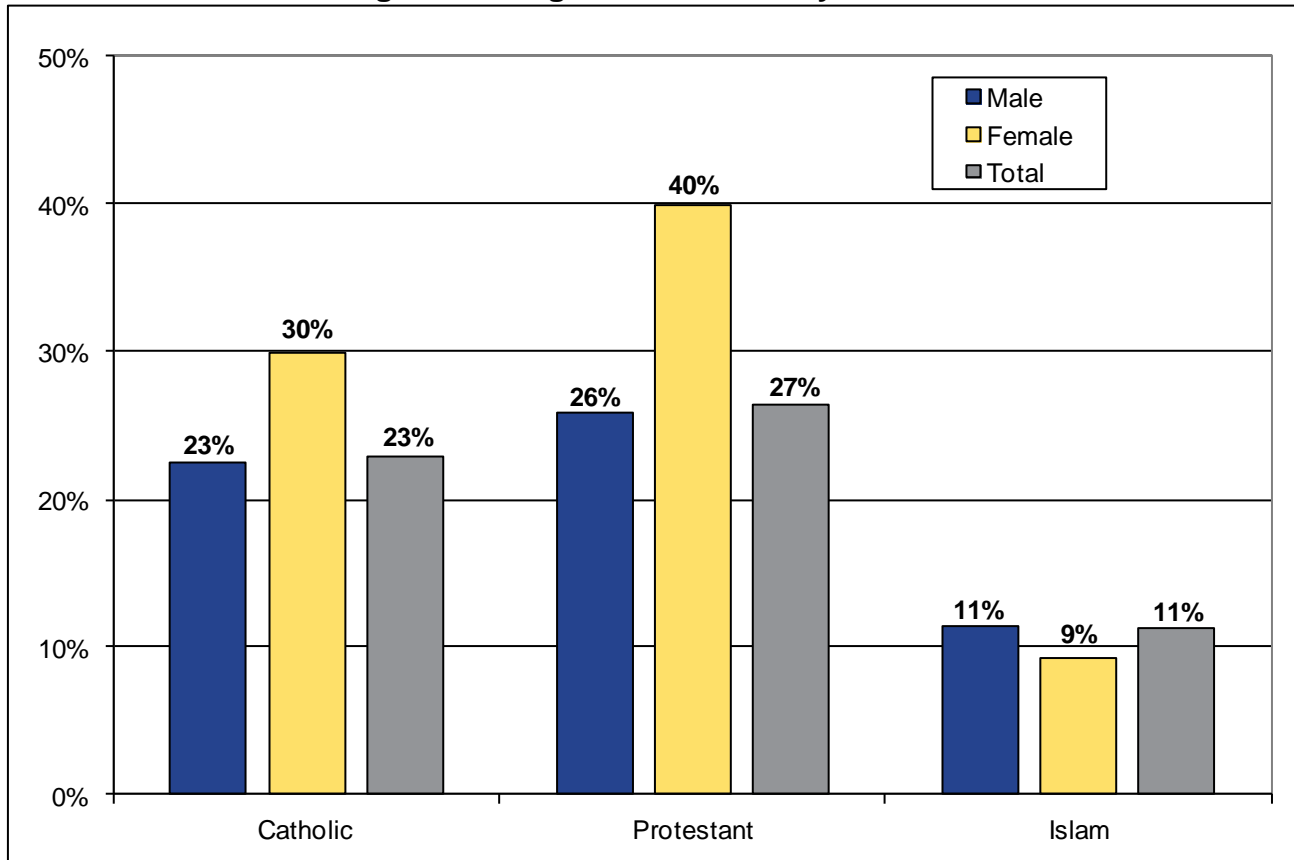
**Table 7. Number of Children; Under Custody Population on January 1, 2015**

Number of Children by Gender	No Children	1 Child	2 Children	3 Children	4 or More	Unknown	Total
Male	19,213	11,626	8,150	4,740	5,769	1,216	50,714
Female	662	535	464	309	403	16	2,389
Total	19,875	12,161	8,614	5,049	6,172	1,232	53,103
Male	37.9%	22.9%	16.1%	9.3%	11.4%	2.4%	100.0%
Female	27.7%	22.4%	19.4%	12.9%	16.9%	0.7%	100.0%
Total	37.4%	22.9%	16.2%	9.5%	11.6%	2.3%	100.0%
<b>Offender Status</b>							
Inmates	19,659	12,033	8,519	4,984	6,126	1,220	52,541
Incarcerated Parolees	216	128	95	65	46	12	562
Total Under Custody	19,875	12,161	8,614	5,049	6,172	1,232	53,103
Inmates	37.4%	22.9%	16.2%	9.5%	11.7%	2.3%	100.0%
Incarcerated Parolees	38.4%	22.8%	16.9%	11.6%	8.2%	2.1%	100.0%
Total Under Custody	37.4%	22.9%	16.2%	9.5%	11.6%	2.3%	100.0%

## Religious Affiliation

Eighty-five percent (85%) of offenders under custody reported affiliation with a recognized religion. Twenty-seven percent (27%) were Protestant, 23% were Catholic, 11% were Islamic, 25% reported another faith, and 15% did not report affiliation with a religious faith.

**Figure 8. Religious Affiliation by Gender**



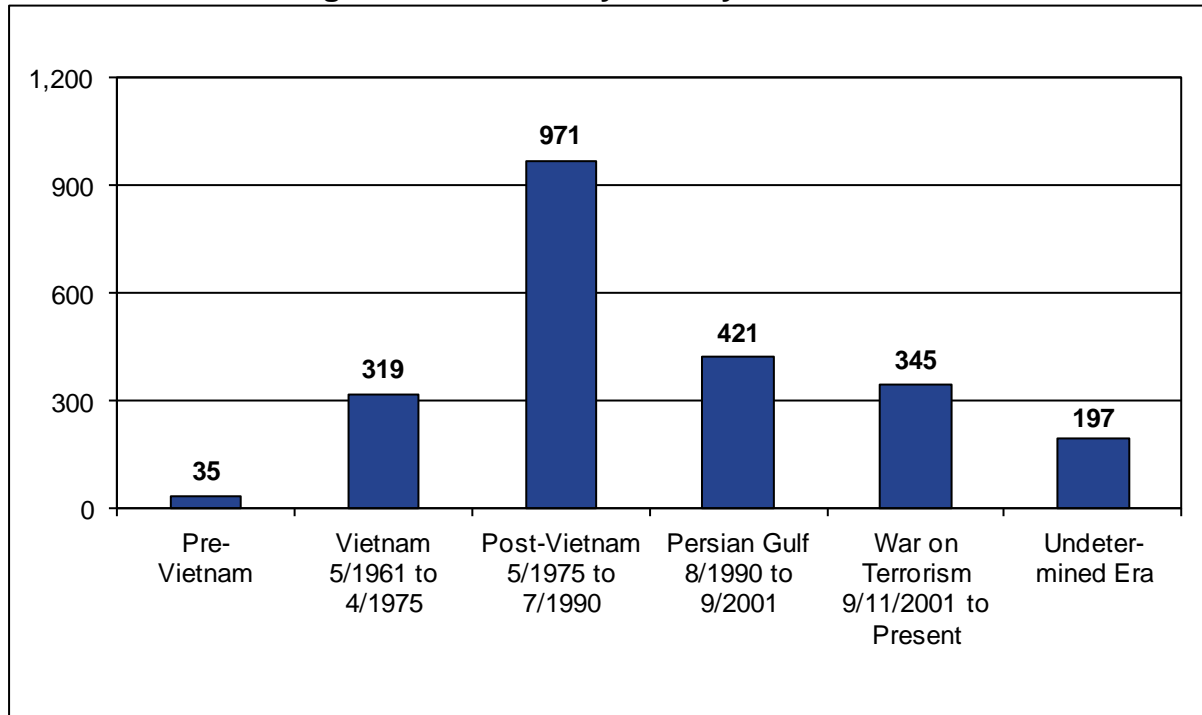
**Table 8. Religious Affiliation; Under Custody Population on January 1, 2015**

Religious Affiliation by Gender	Catholic	Protes- tant	Islam	Nation of Islam	Rasta- farian	Jewish	Asian Religion	Native American	Greek Orthodox	Other	None Listed	Total
Male	11,441	13,103	5,774	1,948	4,259	3,922	326	442	55	1,960	7,484	50,714
Female	714	954	221	9	19	41	13	17	5	23	373	2,389
<b>Total</b>	<b>12,155</b>	<b>14,057</b>	<b>5,995</b>	<b>1,957</b>	<b>4,278</b>	<b>3,963</b>	<b>339</b>	<b>459</b>	<b>60</b>	<b>1,983</b>	<b>7,857</b>	<b>53,103</b>
Male	22.6%	25.8%	11.4%	3.8%	8.4%	7.7%	0.6%	0.9%	0.1%	3.9%	14.8%	100.0%
Female	29.9%	39.9%	9.3%	0.4%	0.8%	1.7%	0.5%	0.7%	0.2%	1.0%	15.6%	100.0%
<b>Total</b>	<b>22.9%</b>	<b>26.5%</b>	<b>11.3%</b>	<b>3.7%</b>	<b>8.1%</b>	<b>7.5%</b>	<b>0.6%</b>	<b>0.9%</b>	<b>0.1%</b>	<b>3.7%</b>	<b>14.8%</b>	<b>100.0%</b>
<b>Offender Status</b>												
Inmates	11,974	13,927	5,973	1,955	4,252	3,946	339	456	60	1,978	7,681	52,541
Incarcerated Parolees	181	130	22	2	26	17	0	3	0	5	176	562
<b>Total Under Custody</b>	<b>12,155</b>	<b>14,057</b>	<b>5,995</b>	<b>1,957</b>	<b>4,278</b>	<b>3,963</b>	<b>339</b>	<b>459</b>	<b>60</b>	<b>1,983</b>	<b>7,857</b>	<b>53,103</b>
Inmates	22.8%	26.5%	11.4%	3.7%	8.1%	7.5%	0.6%	0.9%	0.1%	3.8%	14.6%	100.0%
Incarcerated Parolees	32.2%	23.1%	3.9%	0.4%	4.6%	3.0%	0.0%	0.5%	0.0%	0.9%	31.3%	100.0%
<b>Total Under Custody</b>	<b>22.9%</b>	<b>26.5%</b>	<b>11.3%</b>	<b>3.7%</b>	<b>8.1%</b>	<b>7.5%</b>	<b>0.6%</b>	<b>0.9%</b>	<b>0.1%</b>	<b>3.7%</b>	<b>14.8%</b>	<b>100.0%</b>

## Veteran Status

Of the 53,103 offenders under custody on January 1, 2015, 4% (2,288) reported military service. Of this total, the largest number (971 or 42%) claimed military service in the Post-Vietnam Era (May 1975 to July 1990).

**Figure 9. Veterans by Military Service Era**



**Table 9. Veteran Status by Service Era;  
Under Custody Population on January 1, 2015**

Veteran Era by Offender Status	Non Veteran	Pre-Vietnam	Vietnam 5/1961 to 4/1975	Post-Vietnam 5/1975 to 7/1990	Persian Gulf 8/1990 to 9/2001	War on Terrorism 9/11/2001 to Present	Undetermined Era	Total
Inmates	50,282	35	319	963	413	336	193	52,541
Incarcerated Parolees	533	0	0	8	8	9	4	562
<b>Total Under Custody</b>	<b>50,815</b>	<b>35</b>	<b>319</b>	<b>971</b>	<b>421</b>	<b>345</b>	<b>197</b>	<b>53,103</b>
Inmates	95.7%	0.1%	0.6%	1.8%	0.8%	0.6%	0.4%	100.0%
Incarcerated Parolees	94.8%	0.0%	0.0%	1.4%	1.4%	1.6%	0.7%	100.0%
<b>Total Under Custody</b>	<b>95.7%</b>	<b>0.1%</b>	<b>0.6%</b>	<b>1.8%</b>	<b>0.8%</b>	<b>0.6%</b>	<b>0.4%</b>	<b>100.0%</b>

## Section Two

### CRIMINAL HISTORY

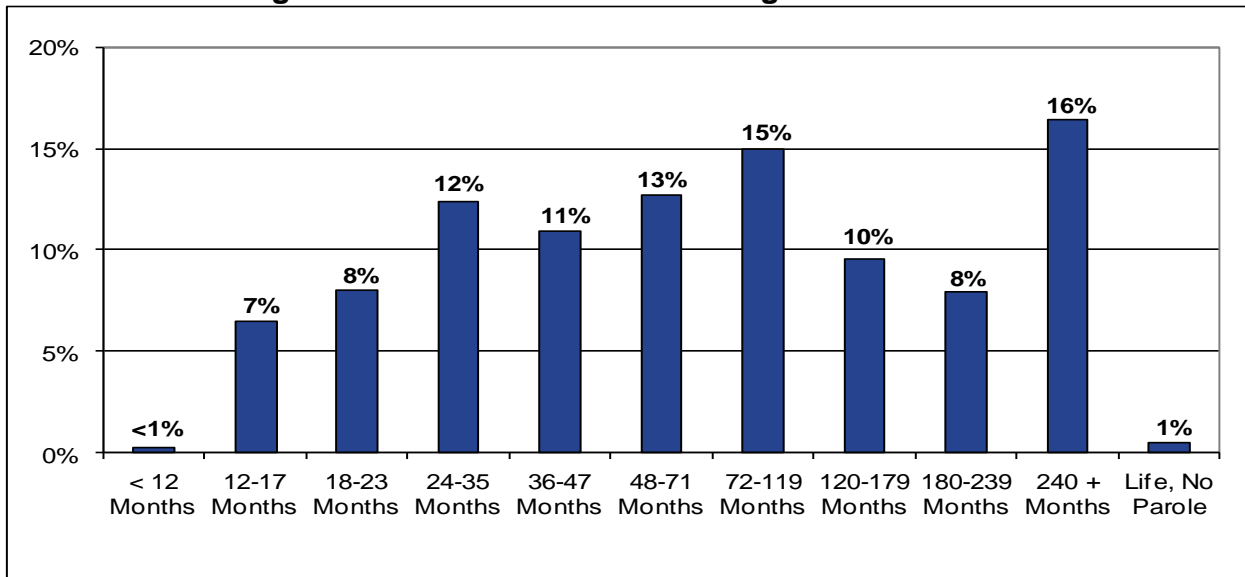
#### Minimum Sentence

Overall, the median minimum sentence for offenders under custody was more than 5 years<sup>3</sup>. However, the average minimum sentence length was ten years, reflecting the influence of lengthy minimum terms of many inmates. About one third are serving minimum sentences of 10 years or more.

Current sentencing laws in New York require an inmate convicted of certain crimes to receive a determinate sentence. Determinate sentences require an offender to serve a minimum term of 6/7 of the determinate sentence imposed by the judge before being eligible for release. An inmate committed for a crime not designated as having a determinate sentence has a minimum sentence set by the court.

As of January 1, 2015, there were 270 inmates under custody who were serving sentences of “Life Without Parole.” In calculating the average minimum sentence length, “Life Without Parole” cases were given a value of 45 years or 540 months.

**Figure 10. Minimum Sentence Length of Offenders**



**Table 10A. Minimum Sentence; Under Custody Population on January 1, 2015**

Minimum Sentence	< 12 Months	12-17 Months	18-23 Months	24-35 Months	36-47 Months	48-71 Months	72-119 Months	120-179 Months	180-239 Months	240 + Months	Life, No Parole	Total
Total Under-Custody	129	3,452	4,245	6,555	5,793	6,730	7,945	5,065	4,201	8,718	270	53,103
	0.2%	6.5%	8.0%	12.3%	10.9%	12.7%	15.0%	9.5%	7.9%	16.4%	0.5%	100.0%

<sup>3</sup> The median is the middle point between the number of instances of greater value and the number of instances of lesser value. The median is less subject to the influence of extreme values than is the average and is preferred by some users for this reason.

**Table 10B. Minimum Sentence; Under Custody Population on January 1, 2015**

Minimum Sentence by Gender - Inmates	Male	Female	Total	Male	Female	Total
< 12 Months	101	18	119	0.2%	0.8%	0.2%
12-17 Months	2,993	322	3,315	6.0%	13.8%	6.3%
18-23 Months	3,836	301	4,137	7.6%	12.9%	7.9%
24-35 Months	5,987	382	6,369	11.9%	16.4%	12.1%
36-47 Months	5,450	269	5,719	10.9%	11.6%	10.9%
48-71 Months	6,357	337	6,694	12.7%	14.5%	12.7%
72-119 Months	7,677	260	7,937	15.3%	11.2%	15.1%
120-179 Months	4,938	125	5,063	9.8%	5.4%	9.6%
180-239 Months	4,078	122	4,200	8.1%	5.2%	8.0%
240 + Months	8,537	181	8,718	17.0%	7.8%	16.6%
Life, No Parole	262	8	270	0.5%	0.3%	0.5%
<b>Total Inmates</b>	<b>50,216</b>	<b>2,325</b>	<b>52,541</b>	<b>100.0%</b>	<b>100.0%</b>	<b>100.0%</b>
Minimum Sentence by Gender - Parolees	Male	Female	Total	Male	Female	Total
< 12 Months	9	1	10	1.8%	1.6%	1.8%
12-17 Months	120	17	137	24.1%	26.6%	24.4%
18-23 Months	98	10	108	19.7%	15.6%	19.2%
24-35 Months	157	29	186	31.5%	45.3%	33.1%
36-47 Months	68	6	74	13.7%	9.4%	13.2%
48-71 Months	35	1	36	7.0%	1.6%	6.4%
72-119 Months	8	0	8	1.6%	0.0%	1.4%
120-179 Months	2	0	2	0.4%	0.0%	0.4%
180-239 Months	1	0	1	0.2%	0.0%	0.2%
240 + Months	0	0	0	0.0%	0.0%	0.0%
Life, No Parole	0	0	0	0.0%	0.0%	0.0%
<b>Total Incarcerated Parolees</b>	<b>498</b>	<b>64</b>	<b>562</b>	<b>100.0%</b>	<b>100.0%</b>	<b>100.0%</b>
<b>Total Under Custody</b>	<b>50,714</b>	<b>2,389</b>	<b>53,103</b>	<b>95.5%</b>	<b>4.5%</b>	<b>100.0%</b>
Average and Median Minimum Sentence	Male Average	Female Average	Total Average	Male Median	Female Median	Total Median
<b>Total Inmates</b>	<b>125.4</b>	<b>74.6</b>	<b>123.2</b>	<b>72.0</b>	<b>40.0</b>	<b>67.0</b>
<b>Total Incarcerated Parolees</b>	<b>27.3</b>	<b>23.1</b>	<b>26.9</b>	<b>24.0</b>	<b>24.0</b>	<b>24.0</b>
<b>Total Under Custody</b>	<b>124.4</b>	<b>73.2</b>	<b>122.1</b>	<b>72.0</b>	<b>36.0</b>	<b>62.0</b>

As can be seen in Table 10B above, the median minimum sentence for inmates is 67 months, but there is a large difference between male inmates, whose median minimum sentence is 72 months, and female inmates, whose median minimum is 40 months.

For incarcerated parolees, the median minimum sentence was 24 months with no difference between male and female parolees. In general, Incarcerated Parolees have shorter minimum and maximum sentences than Inmates committed to state prison.



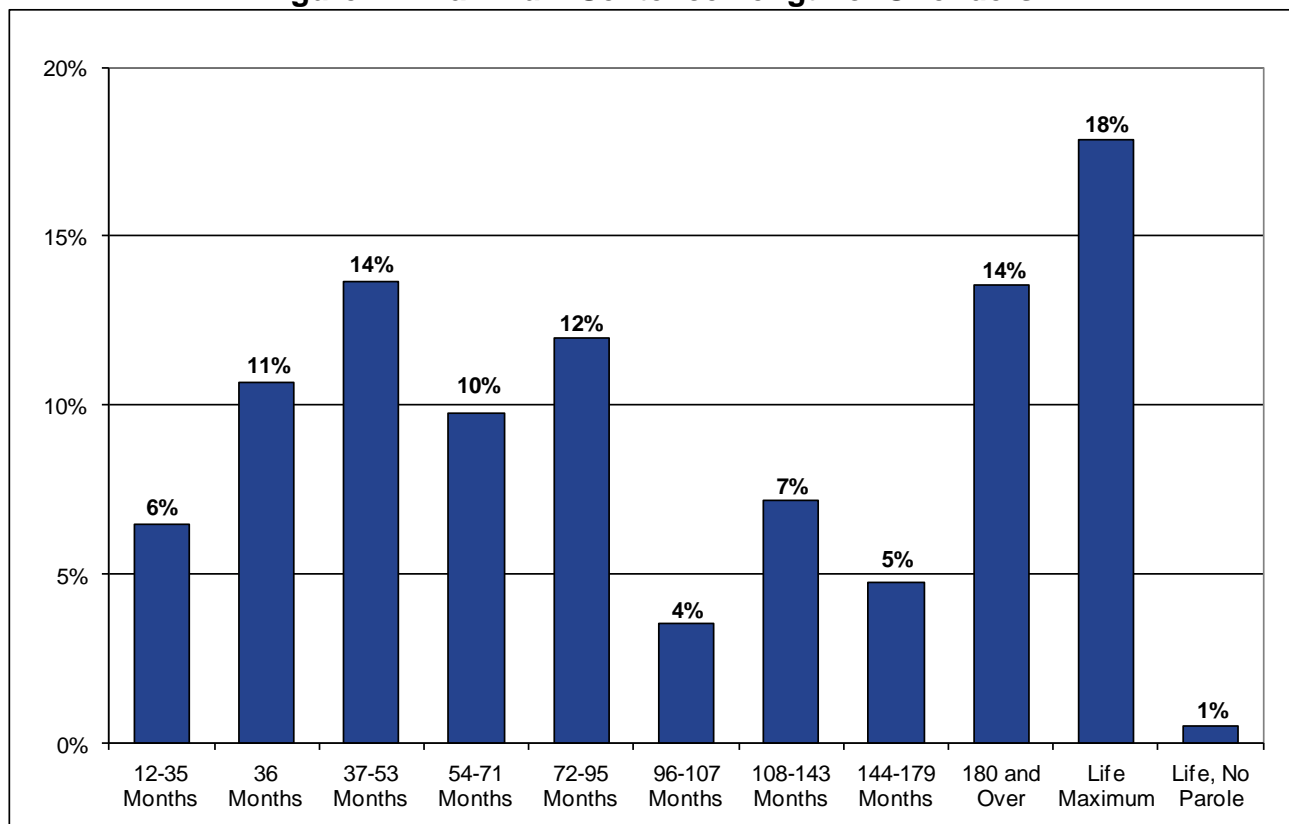
## Maximum Sentence

As of January 1, 2015, the median maximum sentence of offenders under custody was seven years (84 months). However, the average maximum sentence length was nearly 12 years, reflecting the influence of lengthy maximum terms of many inmates. Almost a third had maximum sentences of 15 years or more with 18% of the population having a maximum sentence of life.

Average maximum sentences for women (97 months) were 45 months shorter than for men (142 months). Median maximum sentences for women (60 months) were 24 months shorter than for men (84 months). Average maximum sentences for inmates (141 months) were 95 months shorter than for incarcerated parolees (46 months).

In calculating the average maximum sentence length, "Life Without Parole" cases were given a value of 45 years or 540 months, and Life maximum cases were given a value of 25 years or 300 months.

**Figure 11. Maximum Sentence Length of Offenders**



**Table 11A. Maximum Sentence; Under Custody Population on January 1, 2015**

Maximum Sentence	12 - 35 Months	36 Months	37-53 Months	54-71 Months	72-95 Months	96-107 Months	108-143 Months	144-179 Months	180 and Over	Life Max	Life, No Parole	Total Inmates
Total	3,451	5,681	7,257	5,181	6,367	1,876	3,808	2,522	7,201	9,489	270	53,103
Under Custody	6.5%	10.7%	13.7%	9.8%	12.0%	3.5%	7.2%	4.7%	13.6%	17.9%	0.5%	100.0%

**Table 11B. Maximum Sentence; Under Custody Population on January 1, 2015**

Maximum Sentence by Gender - Inmates	Male	Female	Total	Male	Female	Total
12 to 35	3,085	252	3,337	6.1%	10.8%	6.4%
36 Months	5,090	436	5,526	10.1%	18.8%	10.5%
37-53 Months	6,755	344	7,099	13.5%	14.8%	13.5%
54-71 Months	4,859	270	5,129	9.7%	11.6%	9.8%
72-95 Months	6,030	271	6,301	12.0%	11.7%	12.0%
96-107 Months	1,783	88	1,871	3.6%	3.8%	3.6%
108-143 Months	3,655	148	3,803	7.3%	6.4%	7.2%
144-179 Months	2,424	94	2,518	4.8%	4.0%	4.8%
180 and Over	7,011	189	7,200	14.0%	8.1%	13.7%
Life Max	9,262	225	9,487	18.4%	9.7%	18.1%
Life, No Parole	262	8	270	0.5%	0.3%	0.5%
Total Inmates	50,216	2,325	52,541	100.0%	100.0%	100.0%
Maximum Sentence by Gender - Parolees	Male	Female	Total	Male	Female	Total
12 to 35	103	11	114	20.7%	17.2%	20.3%
36 Months	131	24	155	26.3%	37.5%	27.6%
37-53 Months	139	19	158	27.9%	29.7%	28.1%
54-71 Months	49	3	52	9.8%	4.7%	9.3%
72-95 Months	59	7	66	11.8%	10.9%	11.7%
96-107 Months	5	0	5	1.0%	0.0%	0.9%
108-143 Months	5	0	5	1.0%	0.0%	0.9%
144-179 Months	4	0	4	0.8%	0.0%	0.7%
180 and Over	1	0	1	0.2%	0.0%	0.2%
Life Max	2	0	2	0.4%	0.0%	0.4%
Life, No Parole	0	0	0	0.0%	0.0%	0.0%
Total Incarcerated Parolees	498	64	562	100.0%	100.0%	100.0%
Total Under Custody	50,714	2,389	53,103	95.5%	4.5%	100.0%
Average and Median Maximum Sentence	Male Average	Female Average	Total Average	Male Median	Female Median	Total Median
Total Inmates	142.5	98.9	140.5	84.0	60.0	84.0
Total Incarcerated Parolees	46.9	41.8	46.3	45.0	36.0	42.0
Total Under Custody	141.5	97.4	139.5	84.0	60.0	84.0

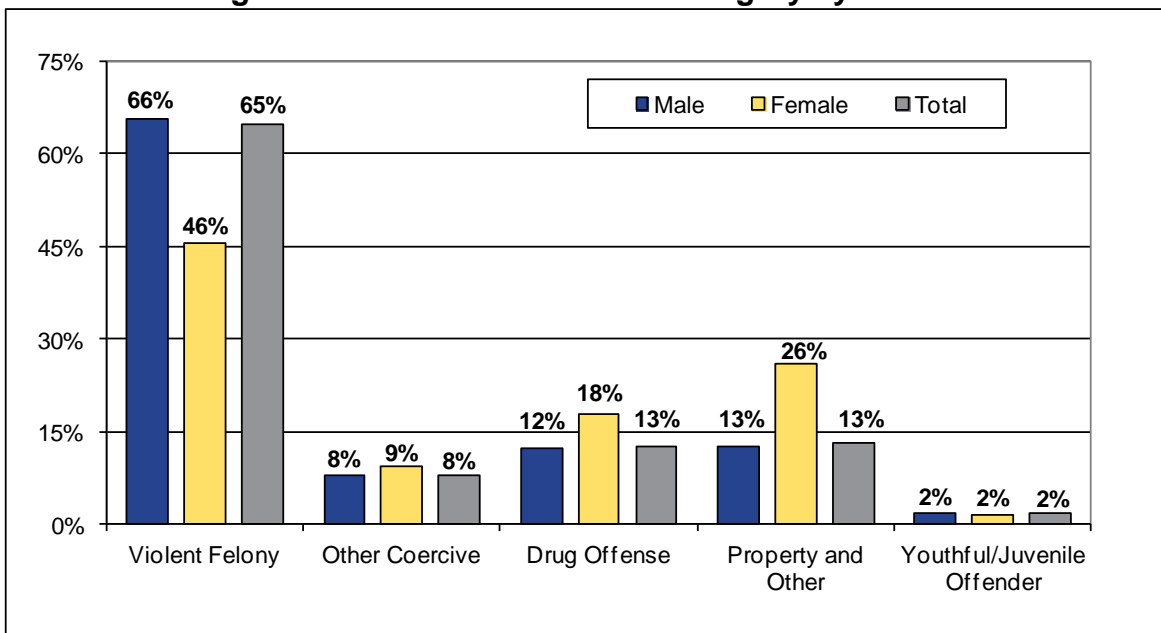
As can be seen in Table 11B above, the median maximum sentence for inmates was 84 months, but there was a large difference between male inmates, whose median maximum sentence was 84 months, and female inmates, at 60 months.

For incarcerated parolees, the median maximum sentence was 42 months. The difference between males and females was much smaller, with a median maximum sentence of 45 months for males compared with 36 months for female incarcerated parolees.

## Commitment Crime

Sixty-five percent (65%) of the offenders under custody on January 1, 2015 were serving a sentence for a Violent Felony Offense (VFO). Another 13% of offenders under custody were serving a sentence for a Property or Other crime. Forty-six percent (46%) of females were serving a sentence for a VFO compared to 66% of males. In contrast, 26% of females were sentenced for a Property or Other crime compared to 13% percent of males. Table 12B lists the commitment crimes that are included in each of the general categories in Figure 12. On January 1, 1997, there were 24,085 drug offenders out of a total custody population of 70,209 (34%). This compares with 6,633 drug offenders (12%) under custody on January 1, 2015. Between 1997 and 2015, there was a 72% reduction (-17,452) in the number of drug offenders held under custody.

**Figure 12. Commitment Crime Category by Gender**



**Table 12A. Crime Category; Under Custody Population on January 1, 2015**

Commitment Crime Type by Gender	Violent Felony	Other Coercive	Drug Offenses	Property and Other	YO/JO	Total
Male	33,288	3,983	6,209	6,330	904	50,714
Female	1,087	220	424	623	35	2,389
Total	34,375	4,203	6,633	6,953	939	53,103
Male	65.6%	7.9%	12.2%	12.5%	1.8%	100.0%
Female	45.5%	9.2%	17.7%	26.1%	1.5%	100.0%
Total	64.7%	7.9%	12.5%	13.1%	1.8%	100.0%
<b>Offender Status</b>						
Inmates	34,335	4,171	6,417	6,706	912	52,541
Incarcerated Parolees	40	32	216	247	27	562
Total Under Custody	34,375	4,203	6,633	6,953	939	53,103
Inmates	65.3%	7.9%	12.2%	12.8%	1.7%	100.0%
Incarcerated Parolees	7.1%	5.7%	38.4%	44.0%	4.8%	100.0%
Total Under Custody	64.7%	7.9%	12.5%	13.1%	1.8%	100.0%

**Table 12B. Crime Category by Offender Status; Under Custody Population on January 1, 2015**

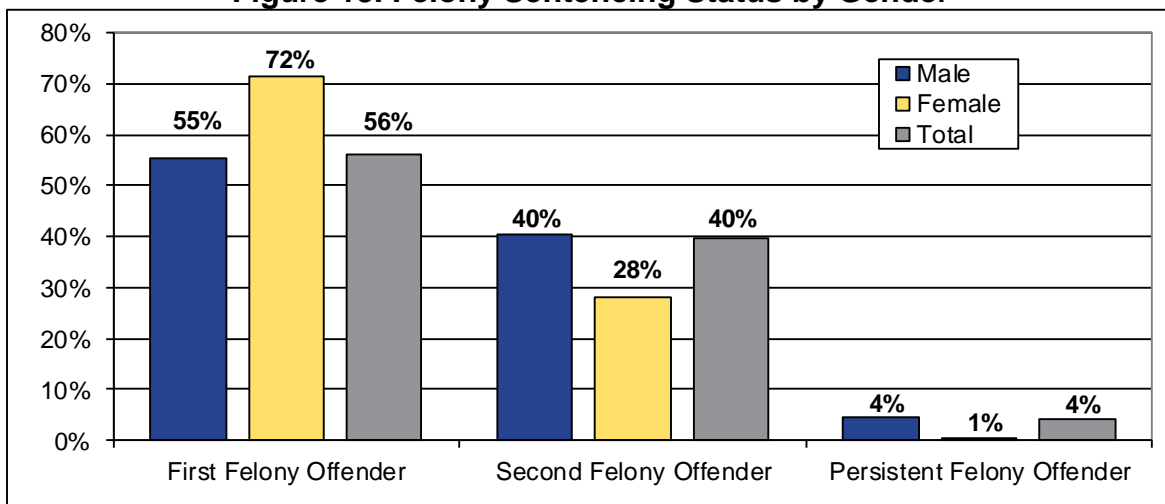
Commitment Crime Type	Inmates			Incarcerated Parolees			Grand Total
	Male	Female	Total	Male	Female	Total	
<b>Violent Felony</b>							
Murder	6,614	203	6,817	0	0	0	6,817
Attempted Murder	1,298	38	1,336	0	0	0	1,336
Manslt 1st,Ag 2nd	1,922	157	2,079	0	0	0	2,079
Rape 1st	1,643	5	1,648	0	0	0	1,648
Robbery 1st	4,015	86	4,101	7	0	7	4,108
Robbery 2nd	2,670	95	2,765	7	0	7	2,772
Assault 1st	1,846	109	1,955	4	0	4	1,959
Assault 2nd	1,336	90	1,426	3	0	3	1,429
Burglary 1st	1,055	21	1,076	1	0	1	1,077
Burglary 2nd	3,863	155	4,018	10	0	10	4,028
Arson 1st,2nd	191	32	223	0	0	0	223
Sodomy 1st	1,007	6	1,013	0	0	0	1,013
Sex Ab 1st,Ag.2	1,208	7	1,215	0	0	0	1,215
Weapons Offenses	3,578	57	3,635	8	0	8	3,643
Kidnapping 1st,2nd	324	12	336	0	0	0	336
Other VFO Sex Off	543	10	553	0	0	0	553
Other Violent	135	4	139	0	0	0	139
Subtotal	33,248	1,087	34,335	40	0	40	34,375
	96.8%	3.2%	100.0%	100.0%	0.0%	100.0%	
<b>Other Coercive</b>							
Manslaughter 2nd	220	26	246	0	0	0	246
Other Homicide	158	26	184	0	0	0	184
Robbery 3rd	1,117	46	1,163	20	1	21	1,184
Att Assault 2nd	382	29	411	2	0	2	413
Conspiracy 2,3,4	295	23	318	1	0	1	319
Other Weapons	614	12	626	4	0	4	630
Other Sex Offenses	813	16	829	0	0	0	829
Other Coercive	353	41	394	4	0	4	398
Subtotal	3,952	219	4,171	31	1	32	4,203
	94.7%	5.3%	100.0%	96.9%	3.1%	100.0%	
<b>Drug Offenses</b>							
Drug Sale	3,170	248	3,418	104	16	120	3,538
Drug Possession	2,850	149	2,999	85	11	96	3,095
Subtotal	6,020	397	6,417	189	27	216	6,633
	93.8%	6.2%	100.0%	87.5%	12.5%	100.0%	
<b>Property and Other</b>							
Burglary 3rd	2,082	89	2,171	95	7	102	2,273
Grand Larceny	1,173	195	1,368	39	11	50	1,418
Forgery	417	80	497	18	6	24	521
Stolen Property	301	29	330	16	4	20	350
Drive Intoxicated	708	78	786	17	3	20	806
Contempt 1st	388	10	398	2	0	2	400
All Other felonies	1,048	108	1,156	26	3	29	1,119
Subtotal	6,117	589	6,706	213	34	247	6,953
	91.2%	8.8%	100.0%	86.2%	13.8%	100.0%	
<b>YO/JO</b>							
Youthful Offender	754	30	784	25	2	27	811
Juvenile Offender	125	3	128	0	0	0	128
Subtotal	879	33	912	25	2	27	939
	96.4%	3.6%	100.0%	92.6%	7.4%	100.0%	
<b>Grand Total</b>	<b>50,216</b>	<b>2,325</b>	<b>52,541</b>	<b>498</b>	<b>64</b>	<b>562</b>	<b>53,103</b>
	<b>95.6%</b>	<b>4.4%</b>	<b>100.0%</b>	<b>88.6%</b>	<b>11.4%</b>	<b>100.0%</b>	

## Felony Sentencing Status

Fifty-six percent (56%) of the total offenders under custody on January 1, 2015, were sentenced as first felony offenders. Crimes are presented by felony sentencing status in Table 13B. Men are more likely than women to be sentenced as second felony offenders.

New York State Penal Law establishes more severe sentences for second felony offenders and persistent felony offenders than for first felony offenders. In general, a persistent felony offender is a person convicted of at least two prior felony offenses on separate occasions. This status allows them to be sentenced to a life maximum. It should be noted that some offenders included among the individuals sentenced as first felony offenders were also convicted of prior felony crimes and some even had previous sentences to state prison. The majority of such offenders were convicted of class A-1 violent felony crimes, which do not permit sentencing as a second felony offender since the penalties for A-1 violent felony crimes are already the most severe.

**Figure 13. Felony Sentencing Status by Gender**



**Table 13A. Second Felony Sentencing Status; Under Custody Population on January 1, 2015**

Felony Offender by Gender	First Felony Offender	Second Felony Offender	Persistent Felony Offender	Total
Male	28,030	20,468	2,216	50,714
Female	1,707	667	15	2,389
Total	29,737	21,135	2,231	53,103
Male	55.3%	40.4%	4.4%	100.0%
Female	71.5%	27.9%	0.6%	100.0%
Total	56.0%	39.8%	4.2%	100.0%
<b>Offender Status</b>				
Inmates	29,440	20,871	2,230	52,541
Incarcerated Parolees	297	264	1	562
Total Under Custody	29,737	21,135	2,231	53,103
Inmates	56.0%	39.7%	4.2%	100.0%
Incarcerated Parolees	52.8%	47.0%	0.2%	100.0%
Total Under Custody	56.0%	39.8%	4.2%	100.0%

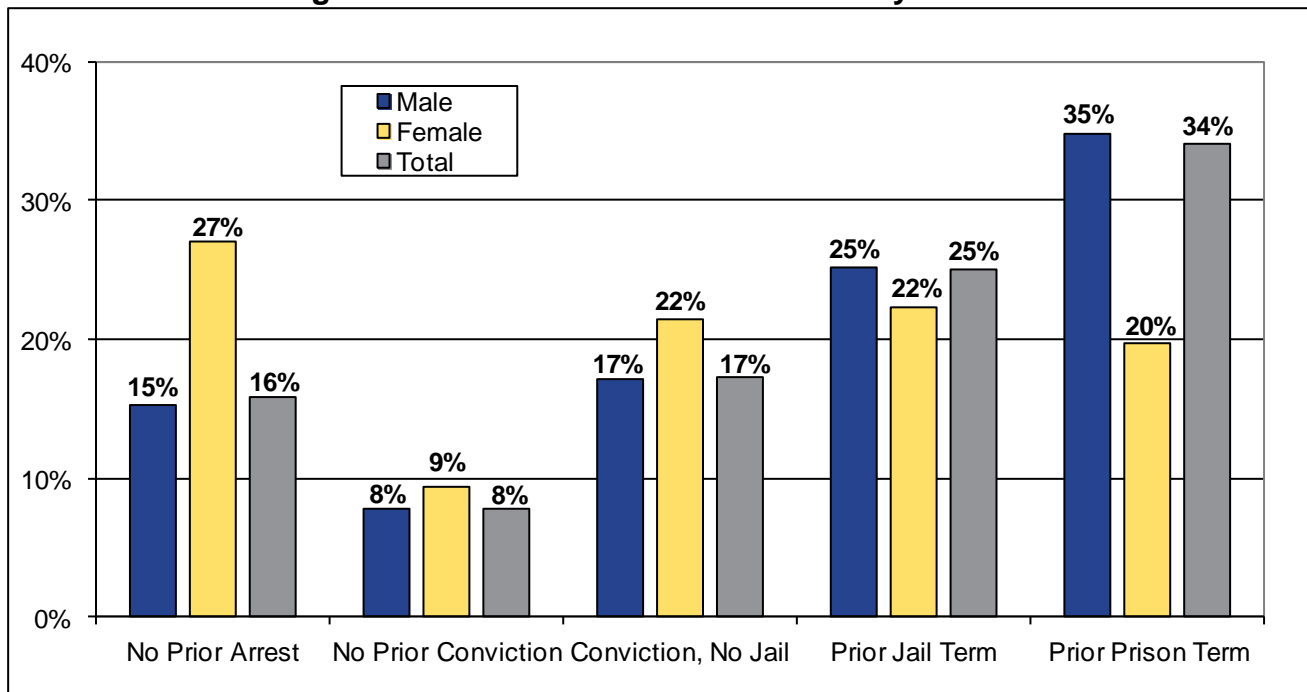
**Table 13B. Second Felony Sentencing Status; Under Custody Population on January 1, 2015**

Commitment Crime Type	Inmates				Incarcerated Parolees				Grand Total
	First Felony Offender	Second Felony Offender	Persistent Felony Offender	Total	First Felony Offender	Second Felony Offender	Persistent Felony Offender	Total	
<b>Violent Felony</b>									
Murder	6,817	0	0	6,817	0	0	0	0	6,817
Attempted Murder	897	384	55	1,336	0	0	0	0	1,336
Manslt 1st,Ag 2nd	1,540	503	36	2,079	0	0	0	0	2,079
Rape 1st	994	533	121	1,648	0	0	0	0	1,648
Robbery 1st	1,857	1,749	495	4,101	6	1	0	7	4,108
Robbery 2nd	1,287	1,156	322	2,765	6	1	0	7	2,772
Assault 1st	1,198	667	90	1,955	4	0	0	4	1,959
Assault 2nd	651	673	102	1,426	1	2	0	3	1,429
Burglary 1st	518	471	87	1,076	0	1	0	1	1,077
Burglary 2nd	1,613	1,877	528	4,018	7	3	0	10	4,028
Arson 1st,2nd	154	68	1	223	0	0	0	0	223
Sodomy 1st	723	241	49	1,013	0	0	0	0	1,013
Sex Ab 1st,Ag.2	939	233	43	1,215	0	0	0	0	1,215
Weapons Offenses	1,917	1,592	126	3,635	6	2	0	8	3,643
Kidnapping 1st,2nd	240	77	19	336	0	0	0	0	336
Other VFO Sex Off	428	117	8	553	0	0	0	0	553
Other Violent	90	43	6	139	0	0	0	0	139
<b>Subtotal</b>	<b>21,863</b>	<b>10,384</b>	<b>2,088</b>	<b>34,335</b>	<b>30</b>	<b>10</b>	<b>0</b>	<b>40</b>	<b>34,375</b>
	63.7%	30.2%	6.1%	100.0%	75.0%	25.0%	0.0%	100.0%	
<b>Other Coercive</b>									
Manslaughter 2nd	183	56	7	246	0	0	0	0	246
Other Homicide	156	26	2	184	0	0	0	0	184
Robbery 3rd	343	797	23	1,163	9	12	0	21	1,184
Att Assault 2nd	100	310	1	411	1	1	0	2	413
Conspiracy 2,3,4	186	127	5	318	1	0	0	1	319
Other Weapons	106	508	12	626	2	2	0	4	630
Other Sex Offenses	573	248	8	829	0	0	0	0	829
Other Coercive	210	180	4	394	2	2	0	4	398
<b>Subtotal</b>	<b>1,857</b>	<b>2,252</b>	<b>62</b>	<b>4,171</b>	<b>15</b>	<b>17</b>	<b>0</b>	<b>32</b>	<b>4,203</b>
	44.5%	54.0%	1.5%	100.0%	46.9%	53.1%	0.0%	100.0%	
<b>Drug Offenses</b>									
Drug Sale	999	2,415	4	3,418	63	57	0	120	3,538
Drug Possession	940	2,053	6	2,999	44	52	0	96	3,095
<b>Subtotal</b>	<b>1,939</b>	<b>4,468</b>	<b>10</b>	<b>6,417</b>	<b>107</b>	<b>109</b>	<b>0</b>	<b>216</b>	<b>6,633</b>
	30.2%	69.6%	0.2%	100.0%	49.5%	50.5%	0.0%	100.0%	
<b>Property and Other</b>									
Burglary 3rd	645	1,505	21	2,171	52	50	0	102	2,273
Grand Larceny	502	848	18	1,368	19	31	0	50	1,418
Forgery	146	349	2	497	10	14	0	24	521
Stolen Property	81	241	8	330	6	14	0	20	350
Drive Intoxicated	776	5	5	786	19	0	1	20	806
Contempt 1st	157	238	3	398	1	1	0	2	400
All Other Felonies	562	581	13	1,156	11	18	0	29	1,185
<b>Subtotal</b>	<b>2,869</b>	<b>3,767</b>	<b>70</b>	<b>6,706</b>	<b>118</b>	<b>128</b>	<b>1</b>	<b>247</b>	<b>6,953</b>
	42.8%	56.2%	1.0%	100.0%	47.8%	51.8%	0.4%	100.0%	
<b>YO/JO</b>									
Youthful Offender	784	0	0	784	27	0	0	27	811
Juvenile Offender	128	0	0	128	0	0	0	0	128
<b>Subtotal</b>	<b>912</b>	<b>0</b>	<b>0</b>	<b>912</b>	<b>27</b>	<b>0</b>	<b>0</b>	<b>27</b>	<b>939</b>
	100.0%	0.0%	0.0%	100.0%	100.0%	0.0%	0.0%	100.0%	
<b>Grand Total</b>	<b>29,440</b>	<b>20,871</b>	<b>2,230</b>	<b>52,541</b>	<b>297</b>	<b>264</b>	<b>1</b>	<b>562</b>	<b>53,103</b>
	56.0%	39.7%	4.2%	100.0%	52.8%	47.0%	0.2%	100.0%	

## Prior Adult Criminal Record

For this report, offenders are placed in a prior adult criminal record category based on their most extensive contact with the criminal justice system prior to their current incarceration. Thirty-four percent (34%) of offenders under custody had served a prior prison term. For 25% of the custody population, prior jail was the most serious contact with the criminal justice system, while 16% had no prior arrest. Women had less serious prior adult records than men.

**Figure 14. Prior Adult Criminal Record by Gender**



**Table 14. Prior Adult Criminal Record; Under Custody Population on January 1, 2015**

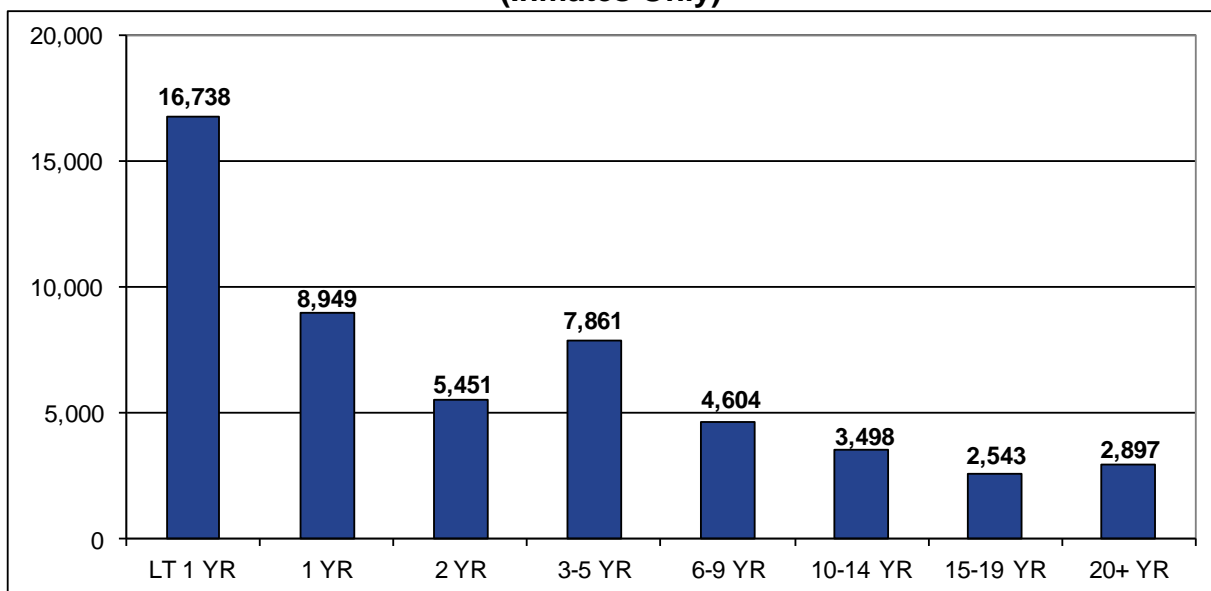
Prior Record by Gender	No Prior Arrest	No Prior Conviction	Conviction, No Jail	Prior Jail Term	Prior Prison Term	Total
Male	7,731	3,939	8,667	12,731	17,646	50,714
Female	647	224	513	533	472	2,389
Total	8,378	4,163	9,180	13,264	18,118	53,103
Male	15.2%	7.8%	17.1%	25.1%	34.8%	100.0%
Female	27.1%	9.4%	21.5%	22.3%	19.8%	100.0%
Total	15.8%	7.8%	17.3%	25.0%	34.1%	100.0%
<b>Offender Status</b>						
Inmates	8,348	4,120	9,058	13,050	17,965	52,541
Incarcerated Parolees	30	43	122	214	153	562
Total Under Custody	8,378	4,163	9,180	13,264	18,118	53,103
Inmates	15.9%	7.8%	17.2%	24.8%	34.2%	100.0%
Incarcerated Parolees	5.3%	7.7%	21.7%	38.1%	27.2%	100.0%
Total Under Custody	15.8%	7.8%	17.3%	25.0%	34.1%	100.0%

## Length of Time Served in Department Custody

About one quarter (26%) of the inmate population had spent six years or more under custody since latest admission to DOCCS. While nearly one-third (32%) had spent less than one year under custody, almost 17% had spent 10 or more years incarcerated.

Inmates under custody on January 1, 2015 had spent an average of 61 months in DOCCS since their latest admission date. The median length of time served was 25 months. Due to the short period of incarceration for incarcerated parolees, all but one had served less than a year (average of 2 months).

**Figure 15. Length of Time Served in DOCCS Custody Since Last Admission Date (Inmates Only)**



**Table 15. DOCCS Time Served in Years; Under Custody Population on January 1, 2015**

Time in DOCCS	LT 1 YR	1 YR	2 YR	3-5 YR	6-9 YR	10-14 YR	15-19 YR	20+ YR	Total	
Male	16,155	8,481	5,216	7,596	4,503	3,412	2,491	2,860	50,714	
Female	1,144	469	235	265	101	86	52	37	2,389	
<b>Total</b>	<b>17,299</b>	<b>8,950</b>	<b>5,451</b>	<b>7,861</b>	<b>4,604</b>	<b>3,498</b>	<b>2,543</b>	<b>2,897</b>	<b>53,103</b>	
Male	31.9%	16.7%	10.3%	15.0%	8.9%	6.7%	4.9%	5.6%	100.0%	
Female	47.9%	19.6%	9.8%	11.1%	4.2%	3.6%	2.2%	1.5%	100.0%	
<b>Total</b>	<b>32.6%</b>	<b>16.9%</b>	<b>10.3%</b>	<b>14.8%</b>	<b>8.7%</b>	<b>6.6%</b>	<b>4.8%</b>	<b>5.5%</b>	<b>100.0%</b>	
<b>Offender Status</b>										
Inmates	16,738	8,949	5,451	7,861	4,604	3,498	2,543	2,897	52,541	
Incarcerated Parolees	561	1	0	0	0	0	0	0	562	
<b>Total Under Custody</b>	<b>17,299</b>	<b>8,950</b>	<b>5,451</b>	<b>7,861</b>	<b>4,604</b>	<b>3,498</b>	<b>2,543</b>	<b>2,897</b>	<b>53,103</b>	
Inmates	31.9%	17.0%	10.4%	15.0%	8.8%	6.7%	4.8%	5.5%	100.0%	
Incarcerated Parolees	99.8%	0.2%	0.0%	0.0%	0.0%	0.0%	0.0%	0.0%	100.0%	
<b>Total Under Custody</b>	<b>32.6%</b>	<b>16.9%</b>	<b>10.3%</b>	<b>14.8%</b>	<b>8.7%</b>	<b>6.6%</b>	<b>4.8%</b>	<b>5.5%</b>	<b>100.0%</b>	
Time Served Since Latest Admission Date in Months				Inmate-Average			60.7	Parolee-Average		1.8
Time Served Since Latest Admission Date in Months				Inmate-Median			25.2	Parolee-Median		1.5

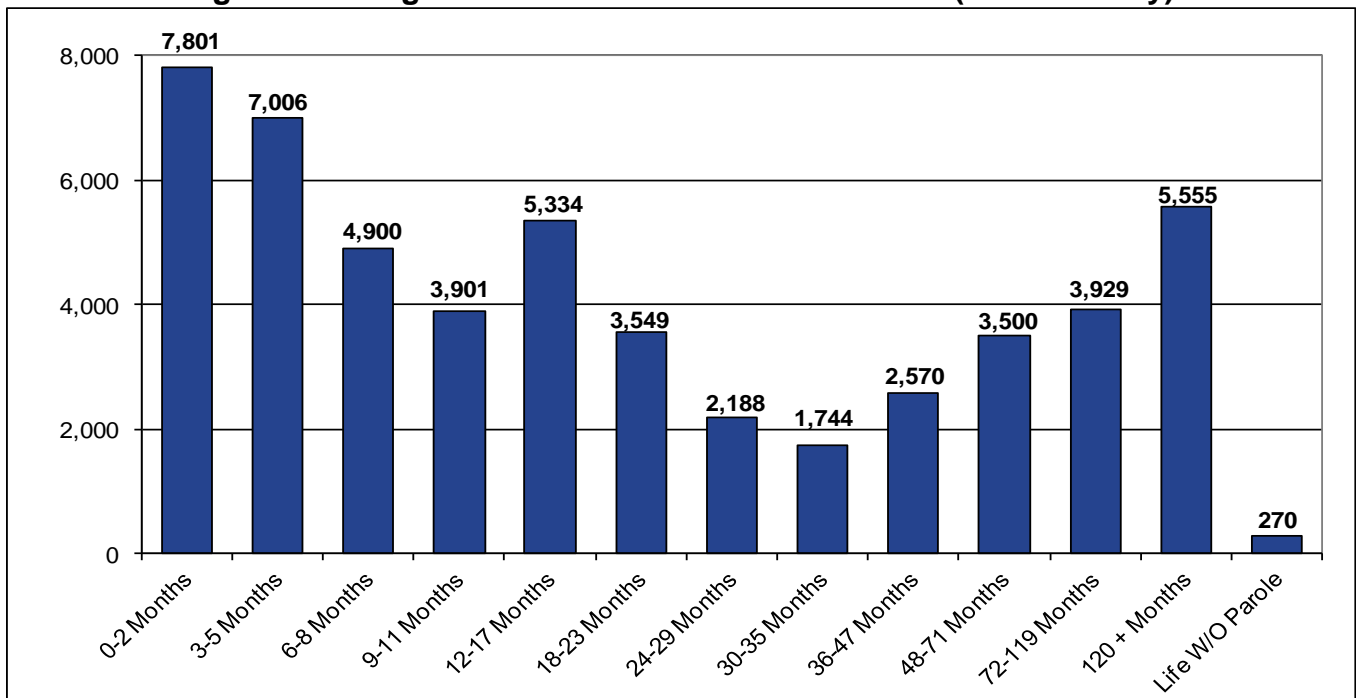


## Time to Earliest Release

Time to earliest release date is a measure of the length of time until the earliest possible date at which the inmate can legally be released. Incarcerated parolees are not included in this section.

Sixty-two percent (62%) of the inmate population had less than two years to their earliest release dates. The average time to earliest release for the inmate population on January 1, 2015 was 51 months. The median time to earliest release was 15 months. Median and average time to earliest release was much lower for female inmates than for male inmates.

**Figure 16. Length of Time to Earliest Release Date (Inmates Only)**



**Table 16. Time to Earliest Release Date in Months; Inmate UC Population on January 1, 2015**

Time to Earliest Release Date	0-2 Months	3-5 Months	6-8 Months	9-11 Months	12-17 Months	18-23 Months	24-29 Months	30-35 Months	36-47 Months	48-71 Months	72-119 Months	120+ Months	Life W/O Parole	Total*
Male	7,340	6,650	4,652	3,693	5,085	3,389	2,093	1,668	2,466	3,390	3,816	5,430	262	49,934
Female	461	356	248	208	249	160	95	76	104	110	113	125	8	2,313
Total	7,801	7,006	4,900	3,901	5,334	3,549	2,188	1,744	2,570	3,500	3,929	5,555	270	52,247
Male	14.7%	13.3%	9.3%	7.4%	10.2%	6.8%	4.2%	3.3%	4.9%	6.8%	7.6%	10.9%	0.5%	100.0%
Female	19.9%	15.4%	10.7%	9.0%	10.8%	6.9%	4.1%	3.3%	4.5%	4.8%	4.9%	5.4%	0.3%	100.0%
Total	14.9%	13.4%	9.4%	7.5%	10.2%	6.8%	4.2%	3.3%	4.9%	6.7%	7.5%	10.6%	0.5%	100.0%
Inmates	Average Time to Earliest Release Date in Months						Male	52.0	Female		29.1	Total		51.0
	Median Time to Earliest Release Date in Months						Male	14.8	Female		10.3	Total		14.5

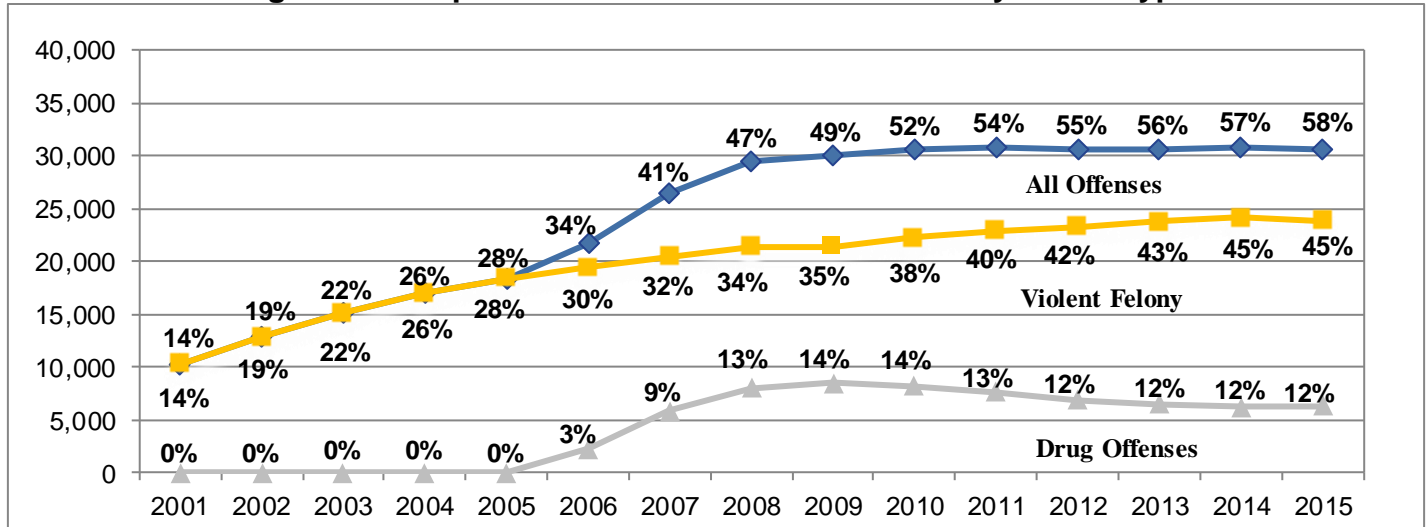
\* Missing 341 cases.

## Determinate Sentencing

Fifty-eight percent (30,704) of the 53,103 offenders under custody on January 1, 2015 were serving determinate sentences.

As of that date, 96% (6,343) of the offenders under custody for drug offenses were serving determinate sentences, while 69% (23,846) of the offenders sentenced for Violent Felony Offenses were serving determinate sentences.

**Figure 17. Proportion of Determinate Sentences by Crime Type**



**Table 17A. Number of Determinate Sentences; Under Custody Population on January 1, 2015**

Offender Status	Violent Felony	Other Coercive	Drug Offenses	Property and Other Offenses	Youthful Offender	Juvenile Offender	Total
<b>Inmates &amp; Incarcerated Parolees</b>							
Indeterminate	10,529	3,703	290	6,948	801	128	22,399
Determinate	23,846	500	6,343	5	10	0	30,704
<b>Total</b>	<b>34,375</b>	<b>4,203</b>	<b>6,633</b>	<b>6,953</b>	<b>811</b>	<b>128</b>	<b>53,103</b>
Indeterminate	31%	88%	4%	100%	99%	100%	42%
Determinate	69%	12%	96%	0%	1%	0%	58%
<b>Total</b>	<b>100%</b>	<b>100%</b>	<b>100%</b>	<b>100%</b>	<b>100%</b>	<b>100%</b>	<b>100%</b>

**Table 17B. Historic Number of Total Determinate, Violent Felony Determinate, and Drug Felony Determinate Sentences; Under Custody Populations on January 1, 2001 – 2015**

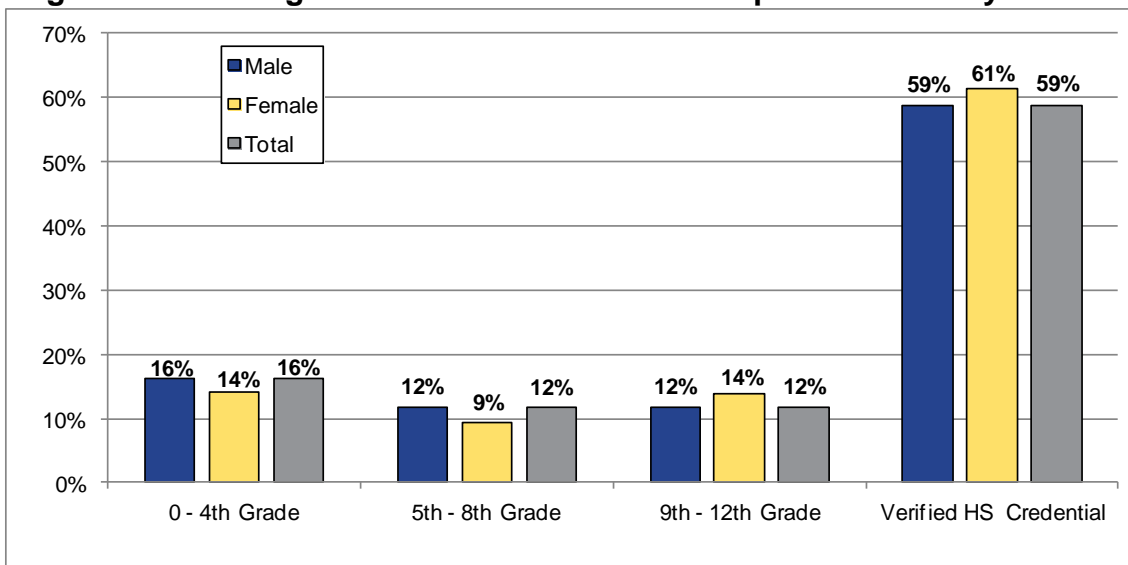
January 1,	2001	2002	2003	2004	2005	2006	2007	2008	2009	2010	2011	2012	2013	2014	2015
Total Determinate	10,297	12,853	15,171	17,026	18,406	21,756	26,463	29,573	30,103	30,689	30,845	30,609	30,681	30,879	30,704
Percent of UC	14%	19%	22%	26%	28%	34%	41%	47%	49%	52%	54%	55%	56%	57%	58%
Violent Determinate	10,291	12,841	15,158	16,998	18,380	19,454	20,532	21,426	21,406	22,277	22,936	23,355	23,785	24,140	23,846
Percent of UC	14%	19%	22%	26%	28%	30%	32%	34%	35%	38%	40%	42%	43%	45%	45%
Drug Determinate	1	2	0	0	0	2,233	5,833	8,042	8,481	8,182	7,614	6,902	6,484	6,257	6,343
Percent of UC	0%	0%	0%	0%	0%	3%	9%	13%	14%	14%	13%	12%	12%	12%	12%

## Education Level

The Department's education program objective is to encourage every inmate to earn a high school equivalency diploma while incarcerated. Testing and education programming are used by the Department to track the academic level of inmates in reading and mathematics. In order to take the high school equivalency examination, the Department requires inmates to take tests demonstrating at least a ninth grade level in reading and mathematics.

Sixteen percent (16%) of inmates had a tested reading score at the 0 – 4<sup>th</sup> Grade level, 12% at 5<sup>th</sup> – 8<sup>th</sup> Grade level, 12% at the 9<sup>th</sup> – 12<sup>th</sup> Grade level (but no verified high school or equivalency diploma), and finally 59% had a verified high school or equivalency diploma.

**Figure 18. Reading Score Grade Level and HS Diploma Status by Gender**



**Table 18. Reading Score Grade Level & HS Diploma Status; UC Population January 10, 2015**

Grade Level based on Tested Reading Score	0 - 4th Grade	5th - 8th Grade	9th - 12th Grade	Missing Test Data	Verified HS Credential	Total
Male	8,264	5,966	5,938	727	29,720	50,615
Female	331	219	328	35	1,454	2,367
Total*	8,595	6,185	6,266	762	31,174	52,982
Male	16.3%	11.8%	11.7%	1.4%	58.7%	100.0%
Female	14.0%	9.3%	13.9%	1.5%	61.4%	100.0%
Total	16.2%	11.7%	11.8%	1.4%	58.8%	100.0%
<b>Offender Status</b>						
Inmates	8,532	6,123	6,196	749	30,838	52,438
Incarcerated Parolees	63	62	70	13	336	544
Total Under Custody*	8,595	6,185	6,266	762	31,174	52,982
Inmates	16.3%	11.7%	11.8%	1.4%	58.8%	100.0%
Incarcerated Parolees	11.6%	11.4%	12.9%	2.4%	61.8%	100.0%
Total Under Custody	16.2%	11.7%	11.8%	1.4%	58.8%	100.0%

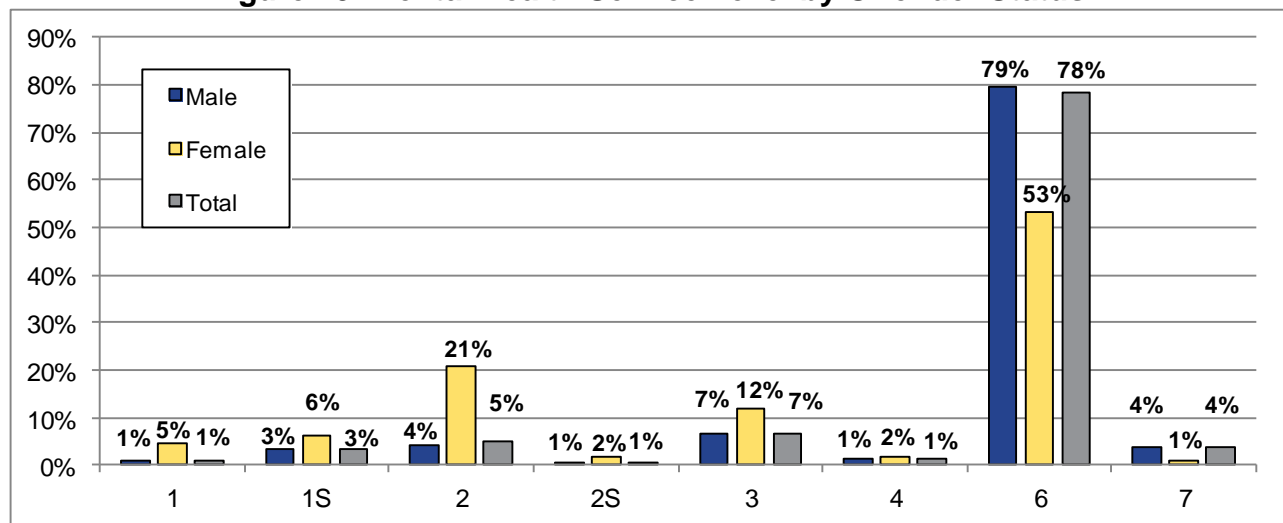
\*Data used from Education Data Files on January 10, 2015. Totals do not equal January 1, 2015 totals.

## Mental Health Service Level

The NYS Office of Mental Health (OMH) provides mental health diagnostic and treatment services to offenders in DOCCS' custody. OMH staff classify offenders according to the mental health service level needed. Offenders who may need mental health treatment services are classified from level 1 through level 4, with 1 indicating the most serious mental health diagnoses and 4 the least serious. Level 6 offenders have been assessed by OMH staff with no mental health service required and level 7 inmates have not yet been assessed. The "S" label in Table 19 indicates Serious Mental Illness (SMI) and the OMH level numbers indicate the level of OMH services that must be available at the facility where the offender is housed.

Eighteen percent (18%) of offenders under custody had an OMH service level of 1 – 4, while 78% had a service level classification of 6 (no mental health services required). Women were more likely than men to have an OMH service level classification of 1 – 4 (46% and 17% respectively).

**Figure 19. Mental Health Service Level by Offender Status**



**Table 19. OMH Service Level and SMI Status; Under Custody Population on January 1, 2015**

OMH Service Level by Gender	1	1S	2	2S	3	4	6	7	Total*
Male	423	1,638	2,185	336	3,275	596	40,259	2,002	50,714
Female	107	143	493	39	284	37	1,269	17	2,389
Total	530	1,781	2,678	375	3,559	633	41,528	2,019	53,103
Male	0.8%	3.2%	4.3%	0.7%	6.5%	1.2%	79.4%	3.9%	100.0%
Female	4.5%	6.0%	20.6%	1.6%	11.9%	1.5%	53.1%	0.7%	100.0%
Total	1.0%	3.4%	5.0%	0.7%	6.7%	1.2%	78.2%	3.8%	100.0%
Offender Status									
Inmates	526	1,779	2,644	375	3,488	630	41,087	2,012	52,541
Incarcerated Parolees	4	2	34	0	71	3	441	7	562
Total Under Custody	530	1,781	2,678	375	3,559	633	41,528	2,019	53,103
Inmates	1.0%	3.4%	5.0%	0.7%	6.6%	1.2%	78.2%	3.8%	100.0%
Incarcerated Parolees	0.7%	0.4%	6.0%	0.0%	12.6%	0.5%	78.5%	1.2%	100.0%
Total Under Custody	1.0%	3.4%	5.0%	0.7%	6.7%	1.2%	78.2%	3.8%	100.0%

\*Due to rounding, percents may not add to 100%.

Prepared by:

Kim Dworakowski  
Program Research Specialist II

Division of Program Planning,  
Research and Evaluation

May 2015