

State of New York
DEPARTMENT OF CORRECTIONS
AND COMMUNITY SUPERVISION

Building Number 2
Harriman Office Campus
Albany, New York 12226

**YEAR 2013 RELEASES AND DISCHARGES
FROM INCARCERATION**



Andrew M. Cuomo
Governor



Anthony J. Annucci
Acting Commissioner

TABLE OF CONTENTS

Statistical Overview	i
Glossary of Terms.....	ii
Introduction.....	iv
Section 1: Type of Release	1
Section 2: Commitment Offense by Gender	4
Section 3: Time Served by Commitment Offense	6
Time Served by Felony Offender Status	7
Trends in Time Served 2009-2013.....	8
Section 4: Time Served by Felony Class	9
Felony Class by Time Served	11
Trends in Time Served by Violent Felony Offenders.....	13
Section 5: Time Served by Minimum Sentence Length	15
Section 6: Time Served by Drug Offenders.....	16
Section 7: Demographic Characteristics	18
Gender and Race/Ethnic Status.....	18
Age at Release.....	19
Region and County of Commitment	21
Appendix A: Range of Minimum and Maximum Sentence by Felony Class Category	22
Appendix B: New York State Department of Correctional Services Crime Codes	29

REPORT OVERVIEW

2013 RELEASES AND DISCHARGES FROM INCARCERATION

This document describes the characteristics of inmates and incarcerated parolees released or discharged from incarceration under the custody of the New York State Department of Corrections and Community Supervision (DOCCS) during calendar year 2013 (N=26,732). There are two major ways an inmate can be released from a DOCCS facility: a first time release on the current sentence (N=14,085), or after a return to prison for violating conditions of parole or post release supervision. In addition, inmates can be released or discharged from the custody of DOCCS by transfer to other agency, offender death, court-ordered discharge, and other release types. The majority of this report will focus on inmates released from prison into the community for the first time on their current sentence. This report presents information on length of time served in custody according to various legal history criteria such as commitment offense, felony class, category of commitment offense, and minimum sentence length. For comparative purposes, there are two tables that show trends in time served in custody between 2009 and 2013.

GLOSSARY OF TERMS

This glossary of terms is a reference tool for readers and includes terms used in this report. In 2011, when the former NYS Division of Parole merged with the former Department of Correctional Services to form the NYS Department of Corrections and Community Supervision (DOCCS), efforts were made to define our joint populations and agency functions as clearly and comprehensively as possible.

Types of DOCCS Facilities

Correctional Facility – a traditional “prison” in which incarcerated offenders are housed.

Parole Program Facility – a facility that houses a specialized treatment program (e.g., Willard Drug Treatment Campus, Edgecombe Residential Treatment Program, Orleans Parole Diversion Program, Hudson Parole Diversion Program) for offenders under community supervision or returned to prison for violating conditions of parole.

Types of DOCCS Offenders

Inmate – a convicted felon under the jurisdiction of DOCCS who is housed by a correctional facility.

Offender – a convicted felon under the jurisdiction of DOCCS.

Parolee – an offender who is under community supervision, including those who are incarcerated or supervised out of state.

Types of DOCCS Program Participants

Alt 90 Participants – technical parole violators who had their parole supervision revoked and are participating in the 90-day alternative drug treatment program at the Willard Drug Treatment Campus as DOCCS inmates.

Alt 45 Participants – technical parole violators who had their parole supervision revoked and are participating in the 45-day alternative drug treatment program at Edgecombe as DOCCS inmates.

Willard Judicially Sanctioned Offender (JS) – offenders who were sentenced by the court to the Willard Drug Treatment Campus as an alternative to incarceration in a DOCCS general confinement facility and are participating in the program as incarcerated parolees.

Willard Parole Violator (PV) – parole violators who were revoked and restored to the Willard Drug Treatment program. These offenders are under community supervision and are participating in the program as incarcerated parolees.

Parole Diversion Program (PDP) Participants – offenders who have been removed from the community to participate in a 45-day treatment program at a parole program facility (e.g., Edgecombe Residential Treatment, Orleans PDP, Hudson PDP). These offenders are under community supervision and are participating in the program as incarcerated parolees.

Types of DOCCS Offender Movement

Release from prison – the exit of an offender from a correctional facility to the community to complete a term of community supervision (e.g., parole release, conditional release).

Discharge from prison – the exit from a correctional facility of an offender who will not be completing a period of time under community supervision (e.g., death, maximum expiration of sentence).

Release to supervision – the entrance of an offender to community supervision’s jurisdiction (e.g., release from prison, Willard judicially sanctioned case, a juvenile offender released from an Office of Children and Family Services’ secure facility).

INTRODUCTION

In April 2011, the former New York State Department of Correctional Services merged with the former New York State Division of Parole to form the New York State Department of Corrections and Community Supervision (DOCCS). As a result of this merger, this report includes information on all inmates and parolees under the jurisdiction of DOCCS who are incarcerated in a correctional facility or a parole program facility.

Offender Releases During Calendar Year 2013: Although the majority of this report focuses on inmates first released from custody to the community during 2013, this introductory section provides some background regarding all inmates and parolees released or discharged from DOCCS facilities during 2013. There were a total of 26,732 releases during calendar year 2013 (see Table A). Among the 26,732 releases, 23,990 occurred among inmates and 2,742 occurred among incarcerated parolees. Total inmate releases during 2013 (23,990) include inmates who were participants in either the Alt-90 or Alt-45 program. Sixty-five percent of the 2,742 incarcerated parolees released during 2013 were released from parole program facilities; 34% were released from correctional facilities due to their inability to successfully complete the program at the program site (see Table A). Most inmates (95%) were released from correctional facilities. The 1,213 inmates released from parole program facilities successfully completed the Alt-90 or Alt-45 program and were released directly from the program.

TABLE A
FACILITY TYPE BY OFFENDER STATUS
2013 RELEASES

RELEASE FACILITY TYPE	INCARCERATED PAROLEES		INMATES		TOTAL	
	#	%	#	%	#	%
CORRECTIONAL FACILITIES	941	34.3%	22,777	94.9%	23,718	88.7%
PAROLE PROGRAM FACILITIES	1,801	65.7%	1,213	5.1%	3,014	11.3%
TOTAL	2,742	100.0%	23,990	100.0%	26,732	100.0%

During 2013, 90% of releases from DOCCS facilities occurred among inmates and 10% were among incarcerated parolees. Most (87%) of the inmate releases during 2013 were to the community to complete a term of Community Supervision (see Table B). Among these releases, there were 1,833 “Alt” program participants. There were 3,097 inmates that were released in 2013 and were not required to complete a term of community supervision. Of these 3,097 “other” inmate releases, 2,535 were released after serving the maximum time on their sentence. Incarcerated parolee releases made up the remaining 10% of the total releases from DOCCS facilities in 2013. Of the incarcerated parolee releases, over one third (37%) were Willard PVs.

TABLE B
RELEASE/DISCHARGE TYPE AND OFFENDER STATUS
2013 RELEASES

INMATE RELEASES	#	%
<i>RELEASES TO COMMUNITY SUPERVISION</i>		
PAROLE, CR, ME-PRS	19,060	91.2%
ALT PROGRAM CASES	1,833	8.8%
<i>Releases to Community Supervision Subtotal</i>	<i>20,893</i>	<i>87.1%</i>
<i>OTHER RELEASES/DISCHARGES</i>		
MAXIMUM EXPIRATION	2,535	81.9%
OTHER RELEASE	562	18.1%
<i>Other Releases Subtotal</i>	<i>3,097</i>	<i>12.9%</i>
Inmate Releases Total	23,990	89.7%

INCARCERATED PAROLEE RELEASES	#	%
WILLARD JS	539	19.7%
WILLARD PV	1,024	37.3%
EDGECOMBE RT	555	20.2%
ORLEANS PDP	488	17.8%
HUDSON PDP	136	5.0%
Incarcerated Parolee Total	2,742	10.3%
GRAND TOTAL	26,732	100.0%

SECTION 1: TYPE OF RELEASE

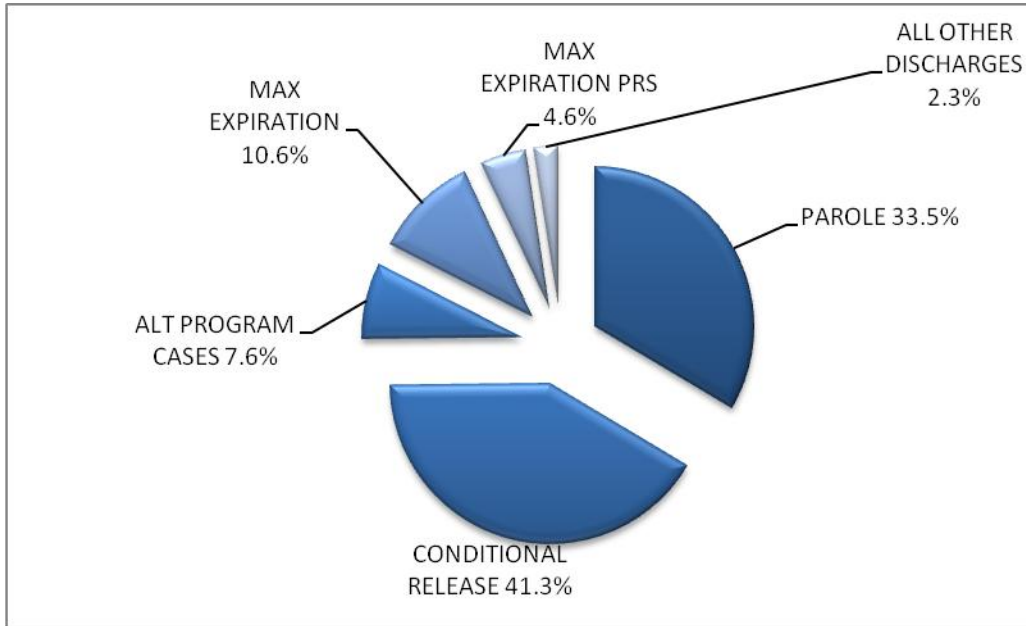
Of the 23,990 inmate releases in 2013, 8,045 (34%) were released to parole supervision following a Parole Board decision*, another 9,906 (41%) were released to parole supervision after reaching a conditional release date, 1,833 (8%) were released after participation in the Alt-90 or Alt-45 program, and 2,535 (11%) were released with no further supervision as a result of serving time until the maximum expiration of their sentence. There were also 1,109 (5%) releases among inmates who reached the maximum expiration of their sentence, but were required to have post-release supervision in the community. The sum of these five release types, 23,428, is considered to be the number of releases to the community. Most of these cases (89%) were released to complete a term of community supervision. In addition, there were 562 inmate releases or discharges from the custody of DOCCS in 2013 by transfer to another agency, offender death, court-ordered discharge, and other release types.

TABLE 1
RELEASE TYPE BY OFFENDER GENDER
2013 RELEASES FROM PRISON

RELEASE TYPE	MALE		FEMALE		TOTAL	
	#	%	#	%	#	%
RELEASES TO THE COMMUNITY						
PAROLE	7,445	33.7%	600	44.9%	8,045	34.3%
CONDITIONAL RELEASE	9,376	42.4%	530	39.7%	9,906	42.3%
ALT PROGRAM CASES	1,780	8.1%	53	4.0%	1,833	7.8%
MAXIMUM EXPIRATION	2,428	11.0%	107	8.0%	2,535	10.8%
MAX EXPIRATION PRS	1,064	4.8%	45	3.4%	1,109	4.7%
Subtotal	22,093	97.7%	1,335	97.1%	23,428	97.7%
OTHER RELEASES/ DISCHARGES						
TRANSFER OTHER AGENCY	223	42.7%	28	70.0%	251	44.7%
COURT ORDER DISCHARGE	118	22.6%	4	10.0%	122	21.7%
ESCAPE	1	0.2%	0	0.0%	1	0.2%
ABSCONDENCE	14	2.7%	1	2.5%	15	2.7%
TEMP REL ARREST	6	1.1%	0	0.0%	6	1.1%
DEATH	139	26.6%	3	7.5%	142	25.3%
OTHER RELEASE	21	4.0%	4	10.0%	25	4.5%
Subtotal	522	2.3%	40	2.9%	562	2.3%
TOTAL	22,615	100.0%	1,375	100.0%	23,990	100.0%

* Parole releases represent inmates released after being approved for release at a Parole Board hearing and inmates re-released to parole supervision after having been returned to prison as the result of a parole violation.

Figure 1
Type of Inmate Release
(2013 Total Releases, N= 23,990)



2013 First Release Demographics: A significant portion (59%) of the 23,990 inmates released or discharged from DOCCS custody in 2013 are identified as first releases. These are inmates who were released to the community for the **first time** on their current sentence due to release to parole supervision (either by a Board of Parole decision or due to re-release to parole supervision after a parole violation) (3,114), release due to reaching their conditional release date (including maximum expiration with post release supervision) (10,557), or release based on reaching maximum expiration of sentence (414) (see Table 1A and Figure 1A).

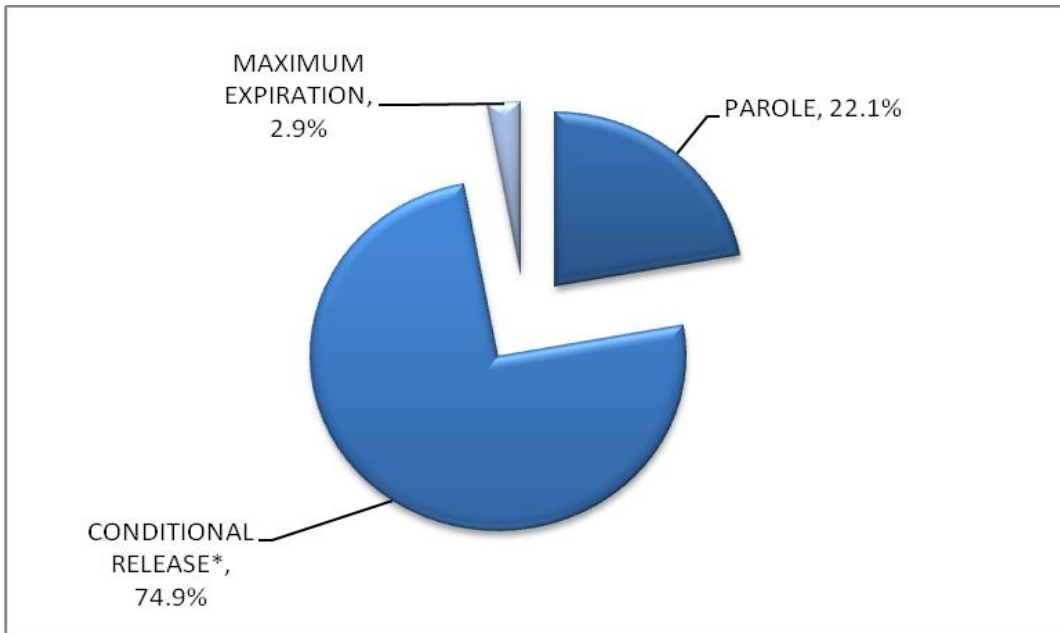
The tables in subsequent sections of this report are based solely on the 14,085 inmates identified as first releases.

TABLE 1A
 FIRST RELEASE TYPE
 2013 FIRST RELEASES FROM PRISON

RELEASE YEAR	RELEASE TYPE						TOTAL	
	PAROLE		CONDITIONAL RELEASE*		MAXIMUM EXPIRATION			
	#	%	#	%	#	%	#	%
2013	3,114	22.1%	10,557	74.9%	414	2.9%	14,085	100.0%

*Maximum Expiration cases with post-release supervision requirements are included as Conditional Releases.

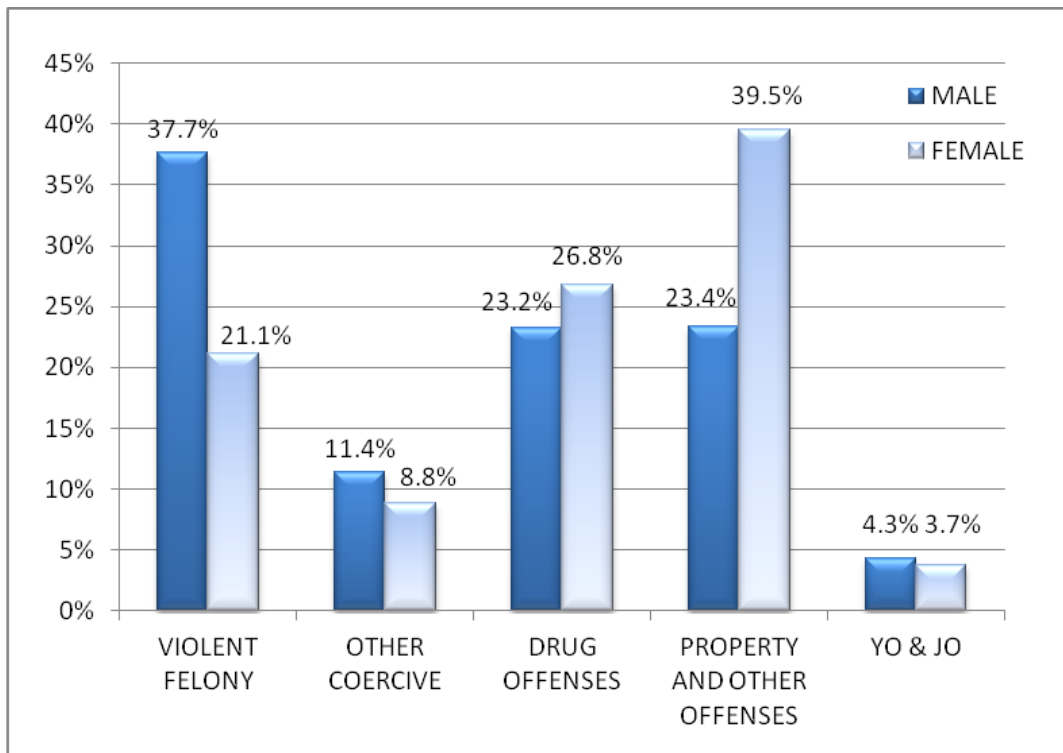
Figure 1A
 Release Type
 2013 First Releases from Prison



SECTION 2: COMMITMENT OFFENSE BY GENDER

Six percent (908) of first releases were women and 94% (13,177) were men.¹ A larger proportion of men released in 2013 (38%) were committed for violent felonies than women (21%). Conversely, a larger proportion of women released were committed for drug offenses and property offenses (27% and 40%, respectively) than men (23% and 23%, respectively) (see Figure 2).

Figure 2
Commitment Offense by Offender Gender
(Year 2013 First Releases, N=14,085)



¹ As of December 31, 2013, only 4% of the under custody population, which totaled 54,142, were female offenders (N=2,413).

Of the 14,085 first releases in 2013, 37% (5,157) were committed for violent felony offenses, 11% (1,581) for other coercive offenses, 23% (3,299) for drug offenses, 24% (3,441) for property and other types of offenses, and 4% (607) as Youthful or Juvenile Offenders (see Table 2).

TABLE 2
COMMITMENT OFFENSE BY INMATE GENDER
2013 FIRST RELEASES

COMMITMENT OFFENSE	MALE		FEMALE		TOTAL	
	#	%	#	%	#	%
VIOLENT FELONY						
MURDER	250	1.9%	2	0.2%	252	1.8%
ATTEMPTED MURDER	103	0.8%	3	0.3%	106	0.8%
MANSLT 1ST,AG 2ND	157	1.2%	10	1.1%	167	1.2%
RAPE 1ST	128	1.0%	0	0.0%	128	0.9%
ROBBERY 1ST	561	4.3%	16	1.8%	577	4.1%
ROBBERY 2ND	776	5.9%	43	4.7%	819	5.8%
ASSAULT 1ST	274	2.1%	18	2.0%	292	2.1%
ASSAULT 2ND	430	3.3%	37	4.1%	467	3.3%
BURGLARY 1ST	129	1.0%	1	0.1%	130	0.9%
BURGLARY 2ND	786	6.0%	40	4.4%	826	5.9%
ARSON 1ST,2ND	22	0.2%	5	0.6%	27	0.2%
SODOMY 1ST	95	0.7%	1	0.1%	96	0.7%
SEX.AB-1ST,AG.2	222	1.7%	0	0.0%	222	1.6%
WEAPONS OFFENSES	899	6.8%	14	1.5%	913	6.5%
KIDNAPPING 1ST,2ND	26	0.2%	0	0.0%	26	0.2%
OTHER VFO SEX OFF	83	0.6%	2	0.2%	85	0.6%
OTHER VIOLENT FELONIES	24	0.2%	0	0.0%	24	0.2%
SUBTOTAL	4,965	37.7%	192	21.1%	5,157	36.6%
OTHER COERCIVE						
MANSLAUGHTER 2ND	45	0.3%	7	0.8%	52	0.4%
OTHER HOMICIDE	25	0.2%	4	0.4%	29	0.2%
ROBBERY 3RD	424	3.2%	21	2.3%	445	3.2%
ATT ASSAULT 2ND	237	1.8%	12	1.3%	249	1.8%
CONSPIRACY 2,3,4	81	0.6%	10	1.1%	91	0.6%
OTHER WEAPONS	271	2.1%	9	1.0%	280	2.0%
OTHER SEX OFFENSES	259	2.0%	2	0.2%	261	1.9%
OTHER COERCIVE	159	1.2%	15	1.7%	174	1.2%
SUBTOTAL	1,501	11.4%	80	8.8%	1,581	11.2%
DRUG OFFENSES						
DRUG SALE	1,641	12.5%	149	16.4%	1,790	12.7%
DRUG POSSESSION	1,415	10.7%	94	10.4%	1,509	10.7%
SUBTOTAL	3,056	23.2%	243	26.8%	3,299	23.4%
PROPERTY AND OTHER OFFENSES						
BURGLARY 3RD	913	6.9%	40	4.4%	953	6.8%
GRAND LARCENY	610	4.6%	122	13.4%	732	5.2%
FORGERY	208	1.6%	58	6.4%	266	1.9%
STOLEN PROPERTY	168	1.3%	20	2.2%	188	1.3%
DRIVE INTOXICATED	462	3.5%	48	5.3%	510	3.6%
CONTEMPT 1ST	227	1.7%	3	0.3%	230	1.6%
ALL OTHER FELONIES	494	3.7%	68	7.5%	562	4.0%
SUBTOTAL	3,082	23.3%	359	39.5%	3,441	24.4%
YO & JO						
YOUTHFUL OFFENDER	540	4.1%	34	3.7%	574	4.1%
JUVENILE OFFENDER	33	0.3%	0	0.0%	33	0.2%
SUBTOTAL	573	4.3%	34	3.7%	607	4.3%
GRAND TOTAL	13,177	100.0%	908	100.0%	14,085	100.0%

SECTION 3: TIME SERVED BY COMMITMENT OFFENSE

The average “total time served” (i.e., state time plus jail time) for first releases in 2013 was 48 months and the median was 31 months. The average “state time only” for these releases was 40 months and the median was 23 months (see Table 3). Inmates convicted for VFO crimes served the longest sentences prior to release (average of 80 months of prison and jail time) while property offenders served the least amount of time prior to release (average of 27 months of prison and jail time).

TABLE 3
COMMITMENT OFFENSE BY TIME SERVED
2013 FIRST RELEASES

COMMITMENT OFFENSE	NUMBER	STATE TIME SERVED IN MONTHS		TOTAL(STATE+JAIL) TIME SERVED IN MONTHS	
		AVERAGE	MEDIAN	AVERAGE	MEDIAN
VIOLENT FELONY					
MURDER	252	290.5	288.6	305.0	300.1
ATTEMPTED MURDER	106	127.4	112.5	140.8	123.7
MANSLT 1ST,AG 2ND	167	145.5	142.9	160.6	154.4
RAPE 1ST	128	124.7	101.2	133.3	109.4
ROBBERY 1ST	577	91.1	71.4	102.2	82.2
ROBBERY 2ND	819	41.6	31.7	51.1	41.0
ASSAULT 1ST	292	70.9	57.2	83.2	71.9
ASSAULT 2ND	467	29.5	24.7	39.1	30.8
BURGLARY 1ST	130	84.2	59.7	96.7	74.1
BURGLARY 2ND	826	44.6	33.8	53.2	41.0
ARSON 1ST,2ND	27	71.2	50.1	83.1	71.9
SODOMY 1ST	96	109.2	93.9	117.4	102.7
SEX.AB-1ST,AG.2	222	45.2	36.1	53.2	41.2
WEAPONS OFFENSES	913	36.1	29.2	44.8	35.9
KIDNAPPING 1ST,2ND	26	134.0	111.8	143.9	123.4
OTHER VFO SEX OFF	85	26.1	23.1	32.5	30.7
OTHER VIOLENT FELONIES	24	16.2	15.8	25.2	20.5
SUBTOTAL	5,157	69.3	40.2	79.3	51.2
OTHER COERCIVE					
MANSLAUGHTER 2ND	52	77.8	79.2	89.4	85.7
OTHER HOMICIDE	29	38.6	33.3	43.1	33.5
ROBBERY 3RD	445	30.1	22.8	37.6	31.9
ATT ASSAULT 2ND	249	21.8	20.3	29.5	24.0
CONSPIRACY 2,3,4	91	30.9	15.3	44.2	31.0
OTHER WEAPONS	280	23.4	20.3	31.3	25.5
OTHER SEX OFFENSES	261	32.8	22.6	38.7	25.8
OTHER COERCIVE	174	28.9	24.5	36.1	31.9
SUBTOTAL	1,581	29.7	22.1	37.4	30.7
DRUG OFFENSES					
DRUG SALE	1,790	23.5	14.6	30.5	21.3
DRUG POSSESSION	1,509	22.7	14.1	28.8	20.4
SUBTOTAL	3,299	23.1	14.3	29.7	20.7
PROPERTY AND OTHER OFFENSES					
BURGLARY 3RD	953	23.3	18.5	29.8	23.9
GRAND LARCENY	732	21.1	16.8	27.1	23.9
FORGERY	266	21.6	15.9	27.3	23.0
STOLEN PROPERTY	188	23.6	16.8	29.9	23.9
DRIVE INTOXICATED	510	18.6	16.9	22.5	23.9
CONTEMPT 1ST	230	20.0	19.5	26.6	23.9
ALL OTHER FELONIES	562	21.2	17.1	27.7	23.9
SUBTOTAL	3,441	21.5	17.7	27.4	23.9
YO & JO					
YOUTHFUL OFFENDER	574	17.2	14.4	23.7	23.9
JUVENILE OFFENDER	33	84.9	45.1	99.8	71.3
SUBTOTAL	607	20.9	15.1	27.8	23.9
GRAND TOTAL	14,085	40.3	22.8	48.1	30.8

TIME SERVED BY FELONY OFFENDER STATUS

Inmates sentenced as repeat felony offenders generally serve longer prison sentences than those sentenced as first felony offenders. On average, second and persistent² felony offenders were incarcerated 2 months longer (49 months) than first felony offenders (47 months). Second and persistent violent felons served an average of 16 months more time than first-time violent felons (see Table 4).

TABLE 4
COMMITMENT OFFENSE BY TOTAL (STATE + JAIL) TIME SERVED AND FELONY OFFENDER STATUS
2013 FIRST RELEASES

COMMITMENT OFFENSE	TOTAL(STATE+JAIL) TIME SERVED IN MONTHS								
	FIRST FELONY OFFENDER			SECOND & PERSIST FELONY			TOTAL		
	NUMBER	AVERAGE	MEDIAN	NUMBER	AVERAGE	MEDIAN	NUMBER	AVERAGE	MEDIAN
VIOLENT FELONY									
MURDER	252	305.0	300.1	0	.	.	252	305.0	300.1
ATTEMPTED MURDER	82	124.3	102.7	24	197.1	205.6	106	140.8	123.7
MANSLT 1ST,AG 2ND	136	158.7	154.3	31	168.6	164.4	167	160.6	154.4
RAPE 1ST	102	112.4	94.3	26	215.3	180.0	128	133.3	109.4
ROBBERY 1ST	336	78.9	59.9	241	134.8	108.0	577	102.2	82.2
ROBBERY 2ND	525	38.0	35.8	294	74.4	57.0	819	51.1	41.0
ASSAULT 1ST	200	71.8	60.0	92	107.8	91.4	292	83.2	71.9
ASSAULT 2ND	309	33.7	29.9	158	49.7	47.9	467	39.1	30.8
BURGLARY 1ST	92	79.4	61.5	38	138.8	124.0	130	96.7	74.1
BURGLARY 2ND	484	38.9	35.8	342	73.4	56.4	826	53.2	41.0
ARSON 1ST,2ND	21	79.0	56.0	6	97.4	84.1	27	83.1	71.9
SODOMY 1ST	69	100.4	77.1	27	161.1	144.0	96	117.4	102.7
SEX.AB-1ST,AG.2	192	49.1	40.9	30	79.2	60.0	222	53.2	41.2
WEAPONS OFFENSES	633	35.7	35.7	280	65.5	51.3	913	44.8	35.9
KIDNAPPING 1ST,2ND	22	135.9	123.3	4	188.0	169.9	26	143.9	123.4
OTHER VFO SEX OFF	77	31.7	30.7	8	40.4	31.1	85	32.5	30.7
OTHER VIOLENT FELONIES	22	24.7	20.5	2	31.2	31.2	24	25.2	20.5
SUBTOTAL	3,554	74.3	41.1	1,603	90.4	66.0	5,157	79.3	51.2
OTHER COERCIVE									
MANSLAUGHTER 2ND	42	85.7	82.7	10	105.0	89.5	52	89.4	85.7
OTHER HOMICIDE	23	40.5	32.0	6	52.9	59.9	29	43.1	33.5
ROBBERY 3RD	169	28.4	23.9	276	43.1	34.2	445	37.6	31.9
ATT ASSAULT 2ND	63	24.8	23.9	186	31.1	25.6	249	29.5	24.0
CONSPIRACY 2,3,4	56	46.4	31.6	35	40.6	25.7	91	44.2	31.0
OTHER WEAPONS	53	29.9	23.9	227	31.6	25.9	280	31.3	25.5
OTHER SEX OFFENSES	190	34.2	23.9	71	50.7	35.9	261	38.7	25.8
OTHER COERCIVE	103	32.8	29.9	71	40.9	31.9	174	36.1	31.9
SUBTOTAL	699	35.7	24.0	882	38.7	31.9	1,581	37.4	30.7
DRUG OFFENSES									
DRUG SALE	674	22.2	16.1	1,116	35.4	25.5	1,790	30.5	21.3
DRUG POSSESSION	652	22.2	15.4	857	33.7	25.5	1,509	28.8	20.4
SUBTOTAL	1,326	22.2	15.8	1,973	34.7	25.5	3,299	29.7	20.7
PROPERTY AND OTHER OFFENSES									
BURGLARY 3RD	376	20.5	16.2	577	35.9	31.9	953	29.8	23.9
GRAND LARCENY	280	23.5	17.8	452	29.3	24.0	732	27.1	23.9
FORGERY	105	18.5	15.0	161	33.1	27.9	266	27.3	23.0
STOLEN PROPERTY	62	20.7	17.9	126	34.4	23.9	188	29.9	23.9
DRIVE INTOXICATED	509	22.5	23.9	1	32.0	32.0	510	22.5	23.9
CONTEMPT 1ST	90	26.1	24.0	140	26.9	23.9	230	26.6	23.9
ALL OTHER FELONIES	331	25.3	23.9	231	31.1	24.0	562	27.7	23.9
SUBTOTAL	1,753	22.6	21.1	1,688	32.3	24.1	3,441	27.4	23.9
YO & JO									
YOUTHFUL OFFENDER	574	23.7	23.9	0	.	.	574	23.7	23.9
JUVENILE OFFENDER	33	99.8	71.3	0	.	.	33	99.8	71.3
SUBTOTAL	607	27.8	23.9	0	.	.	607	27.8	23.9
GRAND TOTAL	7,939	47.2	25.7	6,146	49.1	32.0	14,085	48.1	30.8

² A persistent offender is a person who stands convicted of a felony after having previously been convicted of two or more felonies.

TRENDS IN TIME SERVED (2009-2013)

Among 2013 releases, violent felons spent an average of 79 months in custody, compared with an average of 78 months among 2009 releases. Overall, the average time served for all first releases increased from 45 months in 2009 to 48 months in 2013.

TABLE 5
VIOLENT FELONY STATUS AND CRIME
BY AVERAGE TIME SERVED: 2009-2013 FIRST RELEASES

COMMITMENT CRIME	LATEST RELEASE YEAR										TOTAL	
	2009		2010		2011		2012		2013			
	#	AVG	#	AVG	#	AVG	#	AVG	#	AVG	#	AVG
VIOLENT FELONY												
MURDER	175	303.4	233	310.0	211	301.5	272	306.9	252	305.0	1,143	305.6
ATTEMPTED MURDER	158	124.8	145	137.6	149	136.0	107	152.3	106	140.8	665	137.1
MANSLAUGHTER 1ST	216	162.9	238	160.5	207	168.9	194	158.7	167	160.6	1,022	162.4
RAPE 1ST	156	125.6	126	123.9	165	123.0	151	124.5	128	133.3	726	125.8
ROBBERY 1ST	760	98.7	730	102.3	707	96.1	620	99.6	577	102.2	3,394	99.7
ROBBERY 2ND	902	49.6	835	48.0	840	47.9	820	49.5	819	51.1	4,216	49.2
ASSAULT 1ST	272	74.5	274	78.3	280	79.8	287	80.3	292	83.2	1,405	79.3
ASSAULT 2ND	514	37.1	463	38.4	451	39.7	500	40.1	467	39.1	2,395	38.9
BURGLARY 1ST	113	103.6	105	102.1	113	97.3	109	101.6	130	96.7	570	100.1
BURGLARY 2ND	682	53.7	683	56.0	706	51.6	793	53.0	826	53.2	3,690	53.5
ARSON 1ST,2ND	22	87.6	22	86.2	28	75.5	23	88.5	27	83.1	122	83.7
SODOMY 1ST	115	102.7	99	116.3	114	106.1	111	104.2	96	117.4	535	108.9
SEX AB - 1ST, AG 2	240	51.0	214	46.2	212	54.0	221	53.2	222	53.2	1,109	51.5
WEAPONS OFFENSES	743	41.8	875	42.8	981	42.9	930	44.7	913	44.8	4,442	43.5
KIDNAPPING 1ST, 2ND	35	120.0	23	144.2	27	138.8	30	130.8	26	143.9	141	134.2
OTHER VFO SEX OFFENSES	10	22.0	53	25.5	50	27.9	96	30.5	85	32.5	294	29.4
OTHER VIOLENT FELONIES	10	37.1	16	37.3	13	25.3	22	32.5	24	25.2	85	30.8
SUBTOTAL	5,123	77.5	5,134	80.8	5,254	77.7	5,286	79.9	5,157	79.3	25,954	79.0
OTHER COERCIVE												
MANSLAUGHTER 2ND	52	101.4	67	88.1	61	85.2	54	90.9	52	89.4	286	90.7
OTHER HOMICIDE	29	35.1	33	36.0	42	32.7	35	34.2	29	43.1	168	35.9
ROBBERY 3RD	508	33.6	561	34.3	476	35.2	506	36.4	445	37.6	2,496	35.3
ATT ASSAULT 2ND	220	28.6	215	29.1	232	29.9	248	28.8	249	29.5	1,164	29.2
CONSPIRACY 2,3,4	124	47.4	83	46.0	87	44.7	110	46.5	91	44.2	495	45.9
OTHER WEAPONS	267	30.1	286	33.2	277	33.5	286	31.8	280	31.3	1,396	32.0
OTHER SEX OFFENSES	400	40.7	310	39.1	294	42.4	304	36.4	261	38.7	1,569	39.5
OTHER COERCIVE	186	35.4	170	37.3	163	36.8	196	36.6	174	36.1	889	36.4
SUBTOTAL	1,786	37.2	1,725	37.3	1,632	37.9	1,739	36.9	1,581	37.4	8,463	37.3
DRUG OFFENSES												
DRUG SALE	3,105	31.6	2,746	34.3	2,375	30.6	2,048	30.2	1,790	30.5	12,064	31.6
DRUG POSSESSION	2,552	28.2	2,250	30.6	2,005	29.7	1,640	29.2	1,509	28.8	9,956	29.3
SUBTOTAL	5,657	30.0	4,996	32.6	4,380	30.1	3,688	29.7	3,299	29.7	22,020	30.5
PROPERTY AND OTHER OFFENSES												
BURGLARY 3RD	899	28.6	941	30.6	838	29.0	862	29.7	953	29.8	4,493	29.5
GRAND LARCENY	664	25.5	727	27.2	696	25.8	717	25.9	732	27.1	3,536	26.3
FORGERY	282	25.9	296	27.6	248	28.5	250	27.7	266	27.3	1,342	27.4
STOLEN PROPERTY	228	25.9	257	26.6	203	26.7	212	28.5	188	29.9	1,088	27.4
DRIVE INTOXICATED	536	21.7	569	20.6	613	21.3	582	21.6	510	22.5	2,810	21.5
CONTEMPT 1ST	165	27.4	168	29.3	190	26.4	179	26.1	230	26.6	932	27.1
ALL OTHER FELONIES	439	27.6	487	27.3	466	28.2	586	27.8	562	27.7	2,540	27.7
SUBTOTAL	3,213	26.2	3,445	27.2	3,254	26.4	3,388	26.7	3,441	27.4	16,741	26.8
YO & JO												
YOUTHFUL OFFENDER	603	21.6	584	22.0	570	22.8	591	23.2	574	23.7	2,922	22.6
JUVENILE OFFENDER	24	81.7	31	74.6	28	105.9	35	120.6	33	99.8	151	97.7
SUBTOTAL	627	23.9	615	24.7	598	26.7	626	28.6	607	27.8	3,073	26.3
GRAND TOTAL	16,406	44.6	15,915	47.2	15,118	46.6	14,727	47.9	14,085	48.1	76,251	46.8

SECTION 4: TIME SERVED BY FELONY CLASS

FELONY CLASS BY FELONY OFFENDER STATUS

Class A-I and A-II felons accounted for 4% of the offenders released in 2013 (2% for Class A-I and 2% for Class A-II) (see Table 6). Twenty-one percent of the first releases were committed for Class B felonies, 19% for Class C, 34% for Class D, 19% for Class E felony offenses, and 4% were Youthful Offenders. Time served by felony crime class is presented in Figure 3 and Table 7. They show that Class A-I felony offenders served the longest average period of time in custody (278 months) while Youthful Offenders served the shortest (24 months). Crimes that fall into the A-1 felony class include murder, arson, kidnapping, and conspiracy. There are also drug offenses that fall into the A-1 felony class and they include criminal sale of controlled substance, criminal possession of controlled substance, attempted criminal sale, and attempted criminal possession. More specific information on A-1 drug offenders is presented in subsequent sections.

TABLE 6
FELONY CLASS BY PREDICATE FELONY STATUS
2013 FIRST RELEASES

FELONY CLASS	FIRST FELONY OFFENDER		SECOND FELONY OFFENDER		PERSIST FELONY OFFENDER		TOTAL	
	#	%	#	%	#	%	#	%
A-I FELONY	303	3.8%	10	0.2%	0	0.0%	313	2.2%
A-II FELONY	165	2.1%	65	1.1%	0	0.0%	230	1.6%
CLASS B FELONY	1,624	20.5%	1,251	20.7%	20	19.6%	2,895	20.6%
CLASS C FELONY	1,479	18.6%	1,102	18.2%	37	36.3%	2,618	18.6%
CLASS D FELONY	2,597	32.7%	2,079	34.4%	41	40.2%	4,717	33.5%
CLASS E FELONY	1,197	15.1%	1,537	25.4%	4	3.9%	2,738	19.4%
YOUTHFUL OFFENDER	574	7.2%	0	0.0%	0	0.0%	574	4.1%
TOTAL	7,939	100.0%	6,044	100.0%	102	100.0%	14,085	100.0%

Figure 3
Average Time Served by Felony Class
(Year 2013 First Releases, N=14,085)

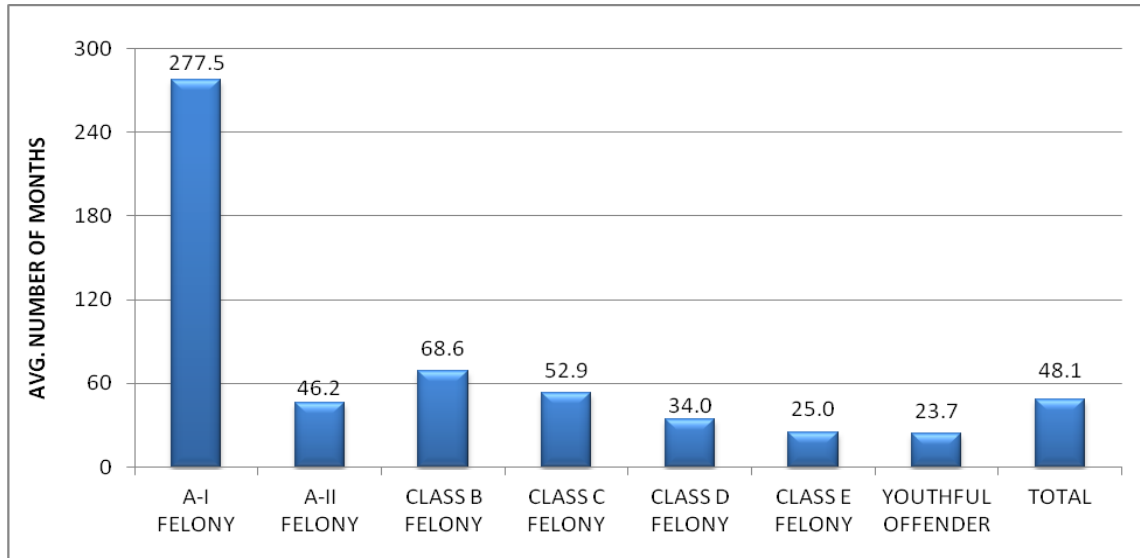


TABLE 7
FELONY OFFENDER STATUS, CRIME CLASS AND MINIMUM SENTENCE BY TIME SERVED
2013 FIRST RELEASES

FELONY CLASS	NUMBER	AGGREGATE MINIMUM IN MONTHS		TOTAL (STATE+JAIL) TIME SERVED IN MONTHS	
		AVERAGE	MEDIAN	AVERAGE	MEDIAN
FIRST FELONY OFFENDER					
A-I FELONY	303	225.0	240.0	281.1	290.1
A-II FELONY	165	46.2	41.0	32.8	26.2
CLASS B FELONY	1,624	60.3	51.0	65.9	51.2
CLASS C FELONY	1,479	42.7	36.0	45.0	39.0
CLASS D FELONY	2,597	24.3	21.0	27.3	23.8
CLASS E FELONY	1,197	15.1	12.0	22.1	23.8
YOUTHFUL OFFENDER	574	15.3	16.0	23.7	23.9
SUBTOTAL	7,939	41.2	24.0	47.2	25.7
SECOND & PERSIST FELONY					
A-I FELONY	10	155.0	154.0	168.9	138.7
A-II FELONY	65	84.0	82.0	80.2	72.7
CLASS B FELONY	1,271	66.7	46.0	72.0	41.0
CLASS C FELONY	1,139	59.4	51.0	63.3	51.3
CLASS D FELONY	2,120	36.3	30.0	42.3	33.7
CLASS E FELONY	1,541	20.6	18.0	27.2	23.9
SUBTOTAL	6,146	43.6	30.0	49.1	32.0
TOTAL					
A-I FELONY	313	222.7	240.0	277.5	286.0
A-II FELONY	230	56.9	51.0	46.2	34.0
CLASS B FELONY	2,895	63.1	51.0	68.6	46.2
CLASS C FELONY	2,618	50.0	41.0	52.9	41.9
CLASS D FELONY	4,717	29.7	24.0	34.0	29.8
CLASS E FELONY	2,738	18.2	18.0	25.0	23.9
YOUTHFUL OFFENDER	574	15.3	16.0	23.7	23.9
GRAND TOTAL	14,085	42.2	26.0	48.1	30.8

FELONY CLASS BY TIME SERVED

Table 8A shows the average and median minimum sentence and time served by felony crime class, grouped by crime type and sorted by predicate felony status.³

TABLE 8A
FELONY OFFENDER STATUS, VIOLENT FELONY STATUS AND FELONY CLASS
BY LENGTH OF MINIMUM SENTENCE AND TIME SERVED
2013 FIRST RELEASES

FELONY CLASS, CRIME TYPE AND FELONY STATUS	NUMBER	AGGREGATE MINIMUM IN MONTHS		STATE TIME SERVED IN MONTHS		TOTAL(STATE+JAIL) TIME SERVED IN MONTHS	
		AVERAGE	MEDIAN	AVERAGE	MEDIAN	AVERAGE	MEDIAN
FIRST FELONY OFFENDER							
VIOLENT FELONY							
A-I FELONY	263	243.5	240.0	290.2	289.0	304.8	300.1
CLASS B FELONY	808	94.1	82.0	97.0	78.9	109.1	90.3
CLASS C FELONY	1084	48.0	41.0	40.8	34.5	50.2	41.1
CLASS D FELONY	1,390	28.6	21.0	21.9	18.7	29.6	24.0
CLASS E FELONY	9	16.7	15.0	12.4	10.7	18.0	15.7
SUBTOTAL	3,554	65.3	41.0	64.6	34.1	74.3	41.1
OTHER COERCIVE							
CLASS B FELONY	39	39.5	24.0	38.1	11.7	53.2	34.3
CLASS C FELONY	77	38.6	30.0	58.8	49.4	67.8	57.3
CLASS D FELONY	283	21.6	18.0	29.1	21.3	35.5	25.2
CLASS E FELONY	300	17.9	16.0	19.6	18.5	25.4	23.9
SUBTOTAL	699	22.9	16.0	28.8	20.2	35.7	24.0
DRUG OFFENSES							
A-I FELONY	28	108.9	102.0	82.9	67.4	95.7	83.5
A-II FELONY	165	46.2	41.0	24.3	17.7	32.8	26.2
CLASS B FELONY	708	25.6	21.0	14.7	9.5	20.2	15.9
CLASS C FELONY	214	25.1	21.0	13.5	9.1	18.3	14.9
CLASS D FELONY	179	17.9	15.0	11.1	8.7	15.5	12.7
CLASS E FELONY	32	13.4	15.0	8.1	8.1	12.9	12.0
SUBTOTAL	1,326	28.5	21.0	16.5	9.6	22.2	15.8
PROPERTY AND OTHER							
CLASS B FELONY	50	31.4	24.0	25.9	18.2	33.9	24.0
CLASS C FELONY	102	25.9	24.0	22.1	13.7	28.0	23.8
CLASS D FELONY	745	18.6	16.0	17.3	12.2	22.7	19.5
CLASS E FELONY	856	14.2	12.0	16.6	14.7	21.3	23.8
SUBTOTAL	1,753	17.3	12.0	17.5	13.8	22.6	21.1
YOUTHFUL OFFENDER							
YOUTHFUL OFFENDER	574	15.3	16.0	17.2	14.4	23.7	23.9
JUVENILE OFFENDER							
A-I FELONY	12	88.5	93.0	182.0	192.3	195.6	206.3
CLASS B FELONY	19	35.9	36.0	28.0	21.8	44.7	41.6
CLASS C FELONY	2	32.0	32.0	43.2	43.2	48.0	48.0
SUBTOTAL	33	54.8	40.0	84.9	45.1	99.8	71.3
SECOND & PERSIST FELONY							
VIOLENT FELONY							
CLASS B FELONY	345	136.8	123.0	150.9	132.7	162.4	144.0
CLASS C FELONY	592	81.5	72.0	77.8	63.2	88.8	72.0
CLASS D FELONY	655	50.4	41.0	44.7	35.2	54.5	46.2
CLASS E FELONY	11	33.4	31.0	38.4	24.0	51.4	36.7
SUBTOTAL	1,603	80.4	62.0	79.8	55.8	90.4	66.0
OTHER COERCIVE							
CLASS B FELONY	8	75.0	60.0	65.2	66.4	87.0	83.9
CLASS C FELONY	25	64.5	54.0	64.6	61.9	77.1	72.0
CLASS D FELONY	377	33.1	24.0	37.4	30.4	45.9	38.1
CLASS E FELONY	472	20.9	18.0	22.4	20.0	30.2	24.0
SUBTOTAL	882	27.8	24.0	30.4	23.5	38.7	31.9
DRUG OFFENSES							
A-I FELONY	10	155.0	154.0	157.2	130.9	168.9	138.7
A-II FELONY	65	84.0	82.0	69.7	62.8	80.2	72.7
CLASS B FELONY	914	40.2	31.0	30.2	20.8	37.6	25.9
CLASS C FELONY	491	33.0	36.0	25.8	22.1	32.3	29.8
CLASS D FELONY	385	23.9	26.0	17.0	14.0	23.7	21.3
CLASS E FELONY	108	20.0	21.0	14.5	14.0	20.2	20.1
SUBTOTAL	1,973	36.1	31.0	27.6	18.7	34.7	25.5
PROPERTY AND OTHER							
CLASS B FELONY	4	76.5	75.0	74.9	79.2	89.3	98.7
CLASS C FELONY	31	51.4	42.0	49.0	42.8	55.8	47.9
CLASS D FELONY	703	31.7	24.0	31.8	25.5	39.2	32.0
CLASS E FELONY	950	20.3	18.0	20.0	17.5	26.3	23.9
SUBTOTAL	1,688	25.8	24.0	25.6	20.2	32.3	24.1
GRAND TOTAL	14,085	42.2	26.0	40.3	22.8	48.1	30.8

³ A predicate felony offender is a person who is sentenced by the courts as a second or persistent felony offender.

Table 8B shows average and median minimum sentence and time served by felony crime class. The cases are grouped into violent, non-violent, youthful offender and juvenile offender categories within the two predicate felony statuses. First felony offenders convicted of a violent offense served an average of 74 months whereas non-violent, first felons served an average of 25 months. Predicate felony offenders convicted of a violent felony served an average of 90 months, while non-violent predicate felony offenders served an average of 35 months.

TABLE 8B
 FELONY OFFENDER STATUS, VIOLENT FELONY STATUS AND FELONY CLASS
 BY AVERAGE AND MEDIAN LENGTH OF MINIMUM SENTENCE AND TIME SERVED
 2013 FIRST RELEASES

FELONY CLASS AND FELONY STATUS	NUMBER	AGGREGATE MINIMUM IN MONTHS		STATE TIME SERVED IN MONTHS		TOTAL(STATE+JAIL) TIME SERVED IN MONTHS	
		AVERAGE	MEDIAN	AVERAGE	MEDIAN	AVERAGE	MEDIAN
FIRST FELONY OFFENDER							
VIOLENT FELONY							
A-I FELONY	263	243.5	240.0	290.2	289.0	304.8	300.1
CLASS B FELONY	808	94.1	82.0	97.0	78.9	109.1	90.3
CLASS C FELONY	1,084	48.0	41.0	40.8	34.5	50.2	41.1
CLASS D FELONY	1,390	28.6	21.0	21.9	18.7	29.6	24.0
CLASS E FELONY	9	16.7	15.0	12.4	10.7	18.0	15.7
SUBTOTAL	3,554	65.3	41.0	64.6	34.1	74.3	41.1
NON VIOLENT FELONY							
A-I FELONY	28	108.9	102.0	82.9	67.4	95.7	83.5
A-II FELONY	165	46.2	41.0	24.3	17.7	32.8	26.2
CLASS B FELONY	797	26.6	21.0	16.5	9.8	22.6	16.9
CLASS C FELONY	393	28.0	24.0	24.6	12.7	30.5	18.6
CLASS D FELONY	1,207	19.2	16.0	19.2	13.4	24.6	19.9
CLASS E FELONY	1,188	15.1	12.0	17.2	15.4	22.1	23.8
SUBTOTAL	3,778	22.3	16.0	19.2	13.1	24.9	20.4
YOUTHFUL OFFENDER							
YOUTHFUL OFFENDER	574	15.3	16.0	17.2	14.4	23.7	23.9
JUVENILE OFFENDER							
A-I FELONY	12	88.5	93.0	182.0	192.3	195.6	206.3
CLASS B FELONY	19	35.9	36.0	28.0	21.8	44.7	41.6
CLASS C FELONY	2	32.0	32.0	43.2	43.2	48.0	48.0
SUBTOTAL	33	54.8	40.0	84.9	45.1	99.8	71.3
SECOND & PERSIST FELONY							
VIOLENT FELONY							
CLASS B FELONY	345	136.8	123.0	150.9	132.7	162.4	144.0
CLASS C FELONY	592	81.5	72.0	77.8	63.2	88.8	72.0
CLASS D FELONY	655	50.4	41.0	44.7	35.2	54.5	46.2
CLASS E FELONY	11	33.4	31.0	38.4	24.0	51.4	36.7
SUBTOTAL	1,603	80.4	62.0	79.8	55.8	90.4	66.0
NON VIOLENT FELONY							
A-I FELONY	10	155.0	154.0	157.2	130.9	168.9	138.7
A-II FELONY	65	84.0	82.0	69.7	62.8	80.2	72.7
CLASS B FELONY	926	40.6	31.0	30.7	21.0	38.3	26.3
CLASS C FELONY	547	35.5	36.0	28.9	23.9	35.7	30.7
CLASS D FELONY	1,465	30.0	24.0	29.3	23.4	36.8	31.9
CLASS E FELONY	1,530	20.5	18.0	20.4	17.6	27.1	23.9
SUBTOTAL	4,543	30.7	24.0	27.4	20.7	34.6	25.6
GRAND TOTAL	14,085	42.2	26.0	40.3	22.8	48.1	30.8

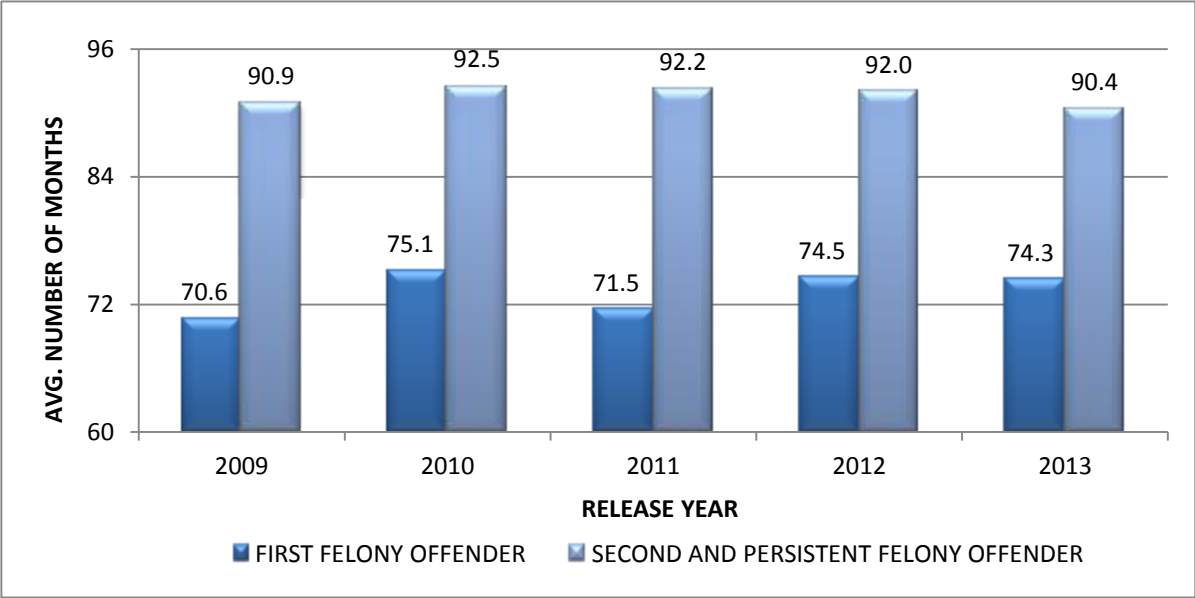
TRENDS IN TIME SERVED BY VIOLENT FELONY OFFENDERS

Between 2009 and 2013, change in average time served varied by felony offender status. For first felony offenders convicted of a violent crime, the average total time served increased from 71 months among 2009 first releases to 74 months among 2013 first releases (see Table 9 and Figure 4). The average time served by second and persistent felony offenders convicted of a violent felony has decreased slightly from 91 months among 2009 releases to 90 months among 2013 releases.

TABLE 9
FELONY OFFENDER STATUS, VIOLENT FELONY STATUS AND FELONY CLASS
BY AVERAGE TIME SERVED: 2009-2013 FIRST RELEASES

FELONY CLASS AND FELONY STATUS	LATEST RELEASE YEAR										TOTAL	
	2009		2010		2011		2012		2013			
	#	AVG	#	AVG	#	AVG	#	AVG	#	AVG	#	AVG
FIRST FELONY OFFENDER												
VIOLENT FELONY												
A-I FELONY	183	299.3	247	306.5	226	300.4	281	307.7	263	304.8	1200	304.2
CLASS B FELONY	925	105.3	882	109.2	934	106.8	836	107.4	808	109.1	4,385	107.5
CLASS C FELONY	869	52.1	895	51.6	1014	50.3	1039	49.9	1,084	50.2	4,901	50.8
CLASS D FELONY	1,400	29.8	1,418	28.8	1,495	29.5	1,490	29.5	1,390	29.6	7,193	29.4
CLASS E FELONY	15	28.0	9	25.9	10	24.6	7	31.2	9	18.0	50	25.6
SUBTOTAL	3,392	70.6	3,451	75.1	3,679	71.5	3,653	74.5	3,554	74.3	17,729	73.2
NON VIOLENT FELONY												
A-I FELONY	23	96.0	22	107.9	23	90.2	27	88.7	28	95.7	123	95.4
A-II FELONY	232	39.5	220	37.4	230	35.0	190	34.0	165	32.8	1,037	36.0
CLASS B FELONY	1,240	22.1	1,051	24.7	932	22.7	868	23.3	797	22.6	4,888	23.1
CLASS C FELONY	569	27.2	468	30.7	420	31.2	420	29.7	393	30.5	2,270	29.7
CLASS D FELONY	1,438	24.0	1,429	24.7	1,350	24.8	1,277	24.3	1,207	24.6	6,701	24.5
CLASS E FELONY	1,136	22.2	1,188	21.5	1,182	21.6	1,265	21.7	1,188	22.1	5,959	21.8
SUBTOTAL	4,638	24.6	4,378	25.5	4,137	25.0	4,047	24.7	3,778	24.9	20,978	24.9
YOUTHFUL OFFENDER												
YOUTHFUL OFFENDER	603	21.6	584	22.0	570	22.8	591	23.2	574	23.7	2,922	22.6
JUVENILE OFFENDER												
A-I FELONY	7	190.9	12	127.5	13	182.3	18	189.1	12	195.6	62	177.2
CLASS B FELONY	15	36.5	17	43.0	11	45.1	14	50.4	19	44.7	76	43.8
CLASS C FELONY	2	39.3	2	24.9	4	24.9	2	39.1	2	48.0	12	33.5
CLASS D FELONY	0	-	0	-	0	-	1	32.0	0	-	1	32.0
SUBTOTAL	24	81.7	31	74.6	28	105.9	35	120.6	33	99.8	151	97.7
SECOND & PERSIST FELONY												
VIOLENT FELONY												
CLASS B FELONY	460	156.7	447	158.2	382	161.8	360	166.4	345	162.4	1,994	160.7
CLASS C FELONY	504	88.5	528	89.2	540	87.0	573	88.0	592	88.8	2,737	88.3
CLASS D FELONY	709	54.2	670	53.5	628	54.5	678	56.5	655	54.5	3,340	54.7
CLASS E FELONY	58	37.5	38	52.7	25	85.9	22	74.1	11	51.4	154	55.3
SUBTOTAL	1,731	90.9	1,683	92.5	1,575	92.2	1,633	92.0	1,603	90.4	8,225	91.6
NON VIOLENT FELONY												
A-I FELONY	5	138.9	6	126.0	6	123.1	5	112.0	10	168.9	32	138.7
A-II FELONY	62	74.0	65	85.1	69	74.3	65	74.2	65	80.2	326	77.5
CLASS B FELONY	906	51.1	1,204	46.4	1,251	38.4	995	39.3	926	38.3	5,282	42.5
CLASS C FELONY	1,273	34.3	1,092	35.2	747	35.5	583	36.1	547	35.7	4,242	35.2
CLASS D FELONY	2,085	32.3	1,822	35.8	1,551	35.7	1,529	36.6	1,465	36.8	8,452	35.3
CLASS E FELONY	1,687	26.0	1,599	27.2	1,505	26.9	1,590	27.0	1,530	27.1	7,911	26.8
SUBTOTAL	6,018	34.3	5,788	36.2	5,129	34.4	4,767	34.5	4,543	34.6	26,245	34.8
FIRST FELONY OFFENDER												
A-I FELONY	213	273.8	281	283.3	262	276.1	326	283.0	303	281.1	1,385	279.9
A-II FELONY	232	39.5	220	37.4	230	35.0	190	34.0	165	32.8	1,037	36.0
CLASS B FELONY	2,180	57.5	1,950	63.1	1,877	64.7	1,718	64.4	1,624	65.9	9,349	62.8
CLASS C FELONY	1,440	42.3	1,365	44.4	1,438	44.7	1,461	44.1	1,479	45.0	7,183	44.1
CLASS D FELONY	2,838	26.8	2,847	26.7	2,845	27.3	2,768	27.1	2,597	27.3	13,895	27.0
CLASS E FELONY	1,151	22.3	1,197	21.5	1,192	21.6	1,272	21.7	1,197	22.1	6,009	21.8
YOUTHFUL OFFENDER	603	21.6	584	22.0	570	22.8	591	23.2	574	23.7	2,922	22.6
SUBTOTAL	8,657	42.6	8,444	45.7	8,414	45.5	8,326	46.8	7,939	47.2	41,780	45.5
SECOND & PERSIST FELONY												
A-I FELONY	5	138.9	6	126.0	6	123.1	5	112.0	10	168.9	32	138.7
A-II FELONY	62	74.0	65	85.1	69	74.3	65	74.2	65	80.2	326	77.5
CLASS B FELONY	1,366	86.7	1,651	76.7	1,633	67.3	1,355	73.0	1,271	72.0	7,276	74.9
CLASS C FELONY	1,777	49.7	1,620	52.8	1,287	57.1	1,156	61.8	1,139	63.3	6,979	56.0
CLASS D FELONY	2,794	37.9	2,492	40.6	2,179	41.1	2,207	42.7	2,120	42.3	11,792	40.8
CLASS E FELONY	1,745	26.4	1,637	27.8	1,530	27.9	1,612	27.6	1,541	27.2	8,065	27.4
SUBTOTAL	7,749	46.9	7,471	48.8	6,704	48.0	6,400	49.2	6,146	49.1	34,470	48.4
GRAND TOTAL	16,406	44.6	15,915	47.2	15,118	46.6	14,727	47.9	14,085	48.1	76,251	46.8

Figure 4
Average Time Served by Violent Felons by Felony Offender Status
First Releases 2009 – 2013



SECTION 5: TIME SERVED BY MINIMUM SENTENCE LENGTH

The total time served in prison for 2013 first releases was similar to minimum sentence length. This was particularly true for offenders with sentences of less than 12 months and those with sentences of 240 months or higher. However, a number of the first release population's total time served fell below the court-set minimum sentence (see Table 10). This resulted primarily from offenders that successfully completed early release programs such as Shock Incarceration or Merit Time⁴. The table also shows that some inmates served longer than their court-imposed minimum sentence. For example, of the 2,531 inmates sentenced to 12-17 months, 21% served less than 12 months while 47% served more than 17 months.

TABLE 10
LENGTH OF MINIMUM SENTENCE BY TOTAL (STATE + JAIL) TIME SERVED
2013 FIRST RELEASES

LENGTH OF MINIMUM SENTENCE	TOTAL (STATE+JAIL) TIME SERVED										TOTAL
	<12 MONTHS	12-17 MONTHS	18-23 MONTHS	24-35 MONTHS	36-47 MONTHS	48-71 MONTHS	72-119 MONTHS	120-179 MONTHS	180-240 MONTHS	240+ MONTHS	
<12 MONTHS	225 95.3%	11 4.7%	0 0.0%	0 0.0%	0 0.0%	0 0.0%	0 0.0%	0 0.0%	0 0.0%	0 0.0%	236 100.0%
12-17 MONTHS	525 20.7%	813 32.1%	583 23.0%	516 20.4%	83 3.3%	10 0.4%	1 0.0%	0 0.0%	0 0.0%	0 0.0%	2,531 100.0%
18-23 MONTHS	197 6.9%	534 18.8%	1,635 57.4%	368 12.9%	74 2.6%	24 0.8%	13 0.5%	2 0.1%	1 0.0%	0 0.0%	2,848 100.0%
24-35 MONTHS	201 6.6%	231 7.6%	471 15.5%	1,646 54.3%	328 10.8%	127 4.2%	26 0.9%	2 0.1%	0 0.0%	1 0.0%	3,033 100.0%
36-47 MONTHS	38 2.1%	97 5.3%	41 2.2%	684 37.1%	746 40.5%	179 9.7%	51 2.8%	7 0.4%	0 0.0%	0 0.0%	1,843 100.0%
48-71 MONTHS	2 0.1%	2 0.1%	27 1.8%	37 2.4%	106 6.9%	1,232 80.3%	103 6.7%	21 1.4%	3 0.2%	2 0.1%	1,535 100.0%
72-119 MONTHS	0 0.0%	2 0.2%	2 0.2%	1 0.1%	7 0.6%	226 19.6%	783 67.9%	62 5.4%	51 4.4%	19 1.6%	1,153 100.0%
120-179 MONTHS	0 0.0%	1 0.2%	0 0.0%	0 0.0%	0 0.0%	1 0.2%	20 4.0%	334 66.0%	114 22.5%	36 7.1%	506 100.0%
180-239 MONTHS	0 0.0%	0 0.0%	0 0.0%	0 0.0%	0 0.0%	0 0.0%	0 0.0%	3 1.4%	131 60.4%	83 38.2%	217 100.0%
240 + MONTHS	0 0.0%	0 0.0%	0 0.0%	0 0.0%	0 0.0%	0 0.0%	0 0.0%	1 0.5%	7 3.8%	175 95.6%	183 100.0%
TOTAL	1,188 8.4%	1,691 12.0%	2,759 19.6%	3,252 23.1%	1,344 9.5%	1,799 12.8%	997 7.1%	432 3.1%	307 2.2%	316 2.2%	14,085 100.0%

⁴ There were a few offenders who served less time at DOCCS than their minimum sentence due to being released early for medical parole, for deportation, or to serve some of their sentence in other jurisdictions.

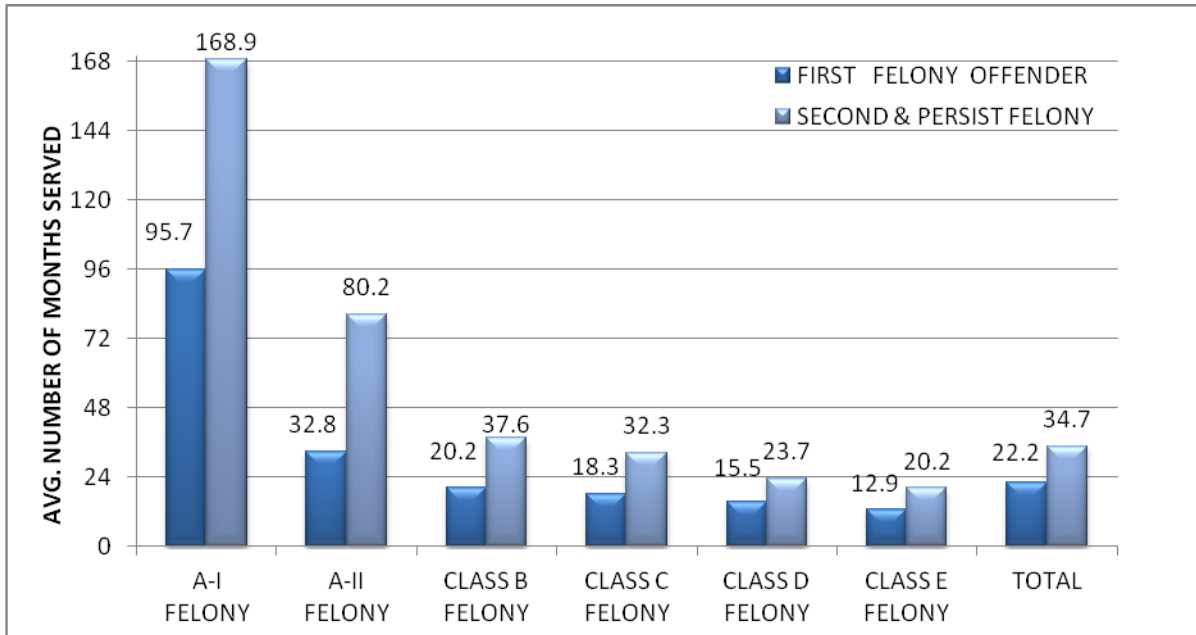
SECTION 6: TIME SERVED BY DRUG OFFENDERS

The average total time served by drug offenders in the 2013 first release population was 30 months. On average, second and persistent felony drug offenders served more time (35 months) than first felony drug offenders (22 months) (see Table 11 and Figure 5). Those sentenced as A-1 felons served significantly more time (115 months on average) than other crime classes of drug offenders. Crimes that fall into the A-1 drug felony class include criminal possession of a controlled substance first degree and criminal sale of a controlled substance first degree along with attempted possession of a controlled substance first degree and attempted sale of controlled possession first degree. The weight of the controlled substances determines A-1 drug classification. Possession of an aggregate weight of 8 ounces or more of a narcotic substance or methadone that weighs 5,760 milligrams or more is a class A-1 felony. Sale of a narcotic substance with an aggregate weight of 2 ounces or more and sale of methadone equaling or exceeding 2,880 milligrams is also an A-1 drug felony.

TABLE 11
FELONY OFFENDER STATUS, CRIME CLASS AND MINIMUM SENTENCE BY TIME SERVED
PERSONS COMMITTED FOR DRUG SALE OR POSSESSION
2013 FIRST RELEASES

FELONY CLASS	NUMBER	AGGREGATE MINIMUM IN MONTHS		TOTAL(STATE+JAIL) TIME SERVED IN MONTHS	
		AVERAGE	MEDIAN	AVERAGE	MEDIAN
FIRST FELONY OFFENDER					
A-I FELONY	28	108.9	102.0	95.7	83.5
A-II FELONY	165	46.2	41.0	32.8	26.2
CLASS B FELONY	708	25.6	21.0	20.2	15.9
CLASS C FELONY	214	25.1	21.0	18.3	14.9
CLASS D FELONY	179	17.9	15.0	15.5	12.7
CLASS E FELONY	32	13.4	15.0	12.9	12.0
SUBTOTAL	1,326	28.5	21.0	22.2	15.8
SECOND & PERSIST FELONY					
A-I FELONY	10	155.0	154.0	168.9	138.7
A-II FELONY	65	84.0	82.0	80.2	72.7
CLASS B FELONY	914	40.2	31.0	37.6	25.9
CLASS C FELONY	491	33.0	36.0	32.3	29.8
CLASS D FELONY	385	23.9	26.0	23.7	21.3
CLASS E FELONY	108	20.0	21.0	20.2	20.1
SUBTOTAL	1,973	36.1	31.0	34.7	25.5
TOTAL					
A-I FELONY	38	121.1	103.0	115.0	95.8
A-II FELONY	230	56.9	51.0	46.2	34.0
CLASS B FELONY	1,622	33.8	30.0	30.0	20.9
CLASS C FELONY	705	30.6	31.0	28.0	20.9
CLASS D FELONY	564	22.0	21.0	21.1	17.9
CLASS E FELONY	140	18.5	21.0	18.5	17.7
GRAND TOTAL	3,299	33.1	26.0	29.7	20.7

Figure 5
Average Time Served for Drug Offenders by Felony Class
First Releases 2013



SECTION 7: DEMOGRAPHIC CHARACTERISTICS

GENDER AND RACE/ETHNIC STATUS

Thirty-six percent of the women and 46% of the men in the 2013 first release cohort were African-American. Forty-five percent of women released in this cohort were White, whereas 26% of men were White. Seventeen percent of women and 26% of men were Hispanic (see Table 12).

TABLE 12
ETHNIC STATUS BY INMATE GENDER
2013 FIRST RELEASES

	INMATE GENDER		TOTAL
	MALE	FEMALE	
AFRICAN-AMERICAN	6,015 45.6%	325 35.8%	6,340 45.0%
WHITE	3,410 25.9%	406 44.7%	3,816 27.1%
HISPANIC	3,430 26.0%	155 17.1%	3,585 25.5%
OTHER	258 2.0%	20 2.2%	278 2.0%
UNKNOWN	64 0.5%	2 0.2%	66 0.5%
TOTAL	13,177 100.0%	908 100.0%	14,085 100.0%

AGE AT RELEASE

The average age of offenders at the time of release was 35 years old. Female offenders released in 2013 were, on average, slightly older (age 36) than male offenders (age 35) (see Table 13). White offenders were slightly older at release (age 36) than African-American offenders (age 35) and Hispanic offenders (age 35) (see Table 14).

TABLE 13
AGE AT RELEASE BY GENDER
2013 FIRST RELEASES

	INMATE GENDER		TOTAL
	MALE	FEMALE	
17 YEARS	23 0.2%	0 0.0%	23 0.2%
18 YEARS	119 0.9%	4 0.4%	123 0.9%
19 YEARS	266 2.0%	15 1.7%	281 2.0%
20 YEARS	352 2.7%	10 1.1%	362 2.6%
21 YEARS	425 3.2%	22 2.4%	447 3.2%
22-24 YRS	1,600 12.1%	102 11.2%	1,702 12.1%
25-29 YRS	2,280 17.3%	165 18.2%	2,445 17.4%
30-34 YRS	2,057 15.6%	146 16.1%	2,203 15.6%
35-39 YRS	1,562 11.9%	110 12.1%	1,672 11.9%
40-49 YRS	2,611 19.8%	218 24.0%	2,829 20.1%
50-59 YRS	1,508 11.4%	98 10.8%	1,606 11.4%
60-64 YRS	206 1.6%	12 1.3%	218 1.5%
65-69 YRS	92 0.7%	4 0.4%	96 0.7%
70 + YRS	76 0.6%	2 0.2%	78 0.6%
TOTAL	13,177 100.0%	908 100.0%	14,085 100.0%
AVERAGE	35.4	35.9	35.4

TABLE 14
AGE AT RELEASE BY ETHNICITY
2013 FIRST RELEASES

	WHITE	AFRICAN-AMERICAN	HISPANIC	OTHER	UNKNOWN	TOTAL
17 YEARS	5 0.1%	13 0.2%	4 0.1%	1 0.4%	0 0.0%	23 0.2%
18 YEARS	22 0.6%	65 1.0%	32 0.9%	3 1.1%	1 1.5%	123 0.9%
19 YEARS	54 1.4%	172 2.7%	51 1.4%	3 1.1%	1 1.5%	281 2.0%
20 YEARS	84 2.2%	182 2.9%	88 2.5%	5 1.8%	3 4.5%	362 2.6%
21 YEARS	100 2.6%	234 3.7%	103 2.9%	9 3.2%	1 1.5%	447 3.2%
22-24 YRS	426 11.2%	805 12.7%	422 11.8%	41 14.7%	8 12.1%	1,702 12.1%
25-29 YRS	715 18.7%	1,063 16.8%	596 16.6%	53 19.1%	18 27.3%	2,445 17.4%
30-34 YRS	565 14.8%	972 15.3%	615 17.2%	44 15.8%	7 10.6%	2,203 15.6%
35-39 YRS	439 11.5%	740 11.7%	450 12.6%	38 13.7%	5 7.6%	1,672 11.9%
40-49 YRS	764 20.0%	1,240 19.6%	774 21.6%	41 14.7%	10 15.2%	2,829 20.1%
50-59 YRS	487 12.8%	722 11.4%	358 10.0%	31 11.2%	8 12.1%	1,606 11.4%
60-64 YRS	84 2.2%	78 1.2%	50 1.4%	5 1.8%	1 1.5%	218 1.5%
65-69 YRS	34 0.9%	35 0.6%	23 0.6%	1 0.4%	3 4.5%	96 0.7%
70 + YRS	37 1.0%	19 0.3%	19 0.5%	3 1.1%	0 0.0%	78 0.6%
TOTAL	3,816 100.0%	6,340 100.0%	3,585 100.0%	278 100.0%	66 100.0%	14,085 100.0%
AVERAGE	36.2	34.6	35.1	35.0	34.1	35.2

REGION AND COUNTY OF COMMITMENT

In 2013, 46% of first releases were committed from New York City and 12% were committed from suburban New York City (Long Island, Westchester and Rockland counties.) Offenders committed from upstate counties with a major population center of at least 50,000 people made up 21% of releases, while those offenders from the remaining upstate counties made up another 22% of the first releases in 2013. Thirty-three percent of females and 21% of males were committed from non-urban, upstate counties. Conversely, 47% of males and 36% of females were committed from New York City.

TABLE 15
REGION AND COUNTY OF COMMITMENT BY INMATE GENDER
2013 FIRST RELEASES

COUNTY OF COMMITMENT	MALE		FEMALE		TOTAL	
	NUMBER	PERCENT	NUMBER	PERCENT	NUMBER	PERCENT
NEW YORK CITY						
KINGS	1,418	10.8%	53	5.8%	1,471	10.4%
NEW YORK	2,390	18.1%	170	18.7%	2,560	18.2%
QUEENS	1,075	8.2%	41	4.5%	1,116	7.9%
RICHMOND	169	1.3%	8	0.9%	177	1.3%
BRONX	1,093	8.3%	57	6.3%	1,150	8.2%
SUBTOTAL	6,145	46.6%	329	36.2%	6,474	46.0%
SUBURBAN NEW YORK						
NASSAU	468	3.6%	31	3.4%	499	3.5%
ROCKLAND	111	0.8%	6	0.7%	117	0.8%
SUFFOLK	624	4.7%	25	2.8%	649	4.6%
WESTCHESTER	370	2.8%	18	2.0%	388	2.8%
SUBTOTAL	1,573	11.9%	80	8.8%	1,653	11.7%
UPSTATE URBAN						
ALBANY	439	3.2%	48	4.6%	487	3.3%
BROOME	196	1.4%	15	1.4%	211	1.4%
ERIE	555	4.1%	35	3.4%	590	4.0%
MONROE	543	4.0%	34	3.3%	577	3.9%
NIAGARA	136	1.0%	11	1.1%	147	1.0%
ONEIDA	307	2.2%	35	3.4%	342	2.3%
ONONDAGA	442	3.2%	39	3.7%	481	3.3%
RENSSELAER	75	0.5%	5	0.5%	80	0.5%
SCHENECTADY	169	1.2%	14	1.3%	183	1.2%
SUBTOTAL	2,862	20.9%	236	22.6%	3,098	21.0%
UPSTATE OTHER						
ALLEGANY	14	0.1%	2	0.2%	16	0.1%
CATTARAUGUS	69	0.5%	5	0.6%	74	0.5%
CAYUGA	107	0.8%	16	1.8%	123	0.9%
CHAUTAUQUA	81	0.6%	9	1.0%	90	0.6%
CHEMUNG	84	0.6%	4	0.4%	88	0.6%
CHENANGO	23	0.2%	3	0.3%	26	0.2%
CLINTON	94	0.7%	20	2.2%	114	0.8%
COLUMBIA	34	0.3%	3	0.3%	37	0.3%
CORTLAND	47	0.4%	3	0.3%	50	0.4%
DELAWARE	28	0.2%	3	0.3%	31	0.2%
DUTCHESS	186	1.4%	10	1.1%	196	1.4%
ESSEX	23	0.2%	2	0.2%	25	0.2%
FRANKLIN	41	0.3%	11	1.2%	52	0.4%
FULTON	38	0.3%	3	0.3%	41	0.3%
GENESEE	71	0.5%	13	1.4%	84	0.6%
GREENE	35	0.3%	5	0.6%	40	0.3%
HAMILTON	2	0.0%	0	0.0%	2	0.0%
HERKIMER	51	0.4%	1	0.1%	52	0.4%
JEFFERSON	82	0.6%	14	1.5%	96	0.7%
LEWIS	15	0.1%	0	0.0%	15	0.1%
LIVINGSTON	66	0.5%	11	1.2%	77	0.5%
MADISON	37	0.3%	3	0.3%	40	0.3%
MONTGOMERY	50	0.4%	4	0.4%	54	0.4%
ONTARIO	123	0.9%	14	1.5%	137	1.0%
ORANGE	247	1.9%	14	1.5%	261	1.9%
ORLEANS	43	0.3%	6	0.7%	49	0.3%
OSWEGO	119	0.9%	13	1.4%	132	0.9%
OTSEGO	53	0.4%	9	1.0%	62	0.4%
PUTNAM	29	0.2%	2	0.2%	31	0.2%
ST LAWRENCE	76	0.6%	7	0.8%	83	0.6%
SARATOGA	89	0.7%	10	1.1%	99	0.7%
SCHOHARIE	16	0.1%	0	0.0%	16	0.1%
SCHUYLER	12	0.1%	0	0.0%	12	0.1%
SENECA	26	0.2%	1	0.1%	27	0.2%
STEUBEN	89	0.7%	12	1.3%	101	0.7%
SULLIVAN	71	0.5%	3	0.3%	74	0.5%
TIOGA	35	0.3%	3	0.3%	38	0.3%
TOMPKINS	60	0.5%	1	0.1%	61	0.4%
ULSTER	157	1.2%	19	2.1%	176	1.2%
WARREN	94	0.7%	17	1.9%	111	0.8%
WASHINGTON	79	0.6%	17	1.9%	96	0.7%
WAYNE	58	0.4%	5	0.6%	63	0.4%
WYOMING	26	0.2%	2	0.2%	28	0.2%
YATES	19	0.1%	2	0.2%	21	0.1%
SUBTOTAL	2,799	21.2%	302	33.3%	3,101	22.0%
GRAND TOTAL	13,177	100.0%	908	100.0%	14,085	100.0%

APPENDIX A

APPENDIX A-1: SENTENCE TO PRISON FOR NON-DRUG FIRST FELONY OFFENSE
RANGE OF MINIMUM AND MAXIMUM SENTENCES ACCORDING TO FELONY CLASS CATEGORY ¹

FELONY CLASS	VIOLENT FELONY OFFENSE (1978 - 1995)	VIOLENT FELONY OFFENSE (Oct. 1995-Aug. 1998) ²	VIOLENT FELONY OFFENSE (After Sep. 1998) ³	NON-VIOLENT FELONY SEX OFFENSE (After Apr. 2007) ⁴	PREDATORY SEXUAL ASSAULT (After Apr. 2007) ⁴	ALL OTHER FELONY OFFENSES
A-I Felony						
Maximum	N/A (Not Available)	N/A (Not Available)	N/A (Not Available)	N/A (Not Available)	N/A (Not Available)	Life, or Life Without Parole ⁵
Minimum						15 - 25 years (for offenders with Life maximum) (minimum sentence fixed by court)
A-II Felony						
Maximum	N/A (Not Available)	N/A (Not Available)	N/A (Not Available)	N/A (Not Available)	Life	Life
Minimum					10 - 25 (minimum sentence fixed by court)	3 - 8 1/3 (minimum sentence fixed by court)
Class B Felony						
Maximum	6 - 25	6 - 25	5-25 (determinate)	5-25 (determinate)	N/A (Not Available)	3 - 25 ⁶
Minimum	2 - 8 1/3 (Minimum = 1/3 of maximum sentence)	3 - 12 1/2 (Minimum = 1/2 of maximum sentence)	6/7 of determinate sentence	6/7 of determinate sentence		1 - 8 1/3 (Minimum = 1/3 of maximum sentence)
Class C Felony						
Maximum	4 1/2 - 15	4 1/2 - 15	3 1/2 - 15 (determinate)	3 1/2 - 15 (determinate)	N/A (Not Available)	3 - 15
Minimum	1 1/2 - 5 (Minimum = 1/3 of maximum sentence)	2 1/4 - 7 1/2 (Minimum = 1/2 of maximum sentence)	6/7 of determinate sentence	6/7 of determinate sentence		1 - 5 (Minimum = 1/3 of maximum sentence)
Class D Felony						
Maximum	3 - 7	3 - 7	2 - 7 (determinate)	2 - 7 (determinate)	N/A (Not Available)	3 - 7
Minimum	1 - 2 1/3 (Minimum = 1 year up to 1/3 of maximum)	1 1/2 - 3 1/2 (Minimum = 1/2 of maximum sentence)	6/7 of determinate sentence	6/7 of determinate sentence		1 - 2 1/3 (Minimum = 1/3 of maximum sentence)
Class E Felony						
Maximum	3 - 4	3 - 4	1 1/2 to 4 (determinate)	1 1/2 to 4 (determinate)	N/A (Not Available)	3 - 4
Minimum	1 - 1 1/3 (Minimum = 1 year up to 1/3 of maximum)	1 1/2 - 2 (Minimum = 1/2 year of maximum sentence)	6/7 of determinate sentence	6/7 of determinate sentence		1 - 1 1/3 (Minimum = 1/3 of maximum sentence)

¹ For more detail see Article 70, Sentences of Imprisonment, New York State Penal law or New York State Sentence Charts, West Publishing Co. 2004.

² Sentences Pursuant to Sentencing Reform Act of 1995.

³ Sentences pursuant to changes in NYS Penal law effective September 1, 1998 (Jenna's Law).

⁴ Sentences pursuant to Sex Offender Management and Treatment Act (SOMTA) effective April 13, 2007.

⁵ Death or Life Without Parole is permitted for Murder 1 crimes committed on or after September 1, 1995.

APPENDIX A-2: SENTENCES TO PRISON FOR NON-DRUG SECOND FELONY OFFENSE
RANGE OF MINIMUM AND MAXIMUM SENTENCES ACCORDING TO FELONY CLASS CATEGORY

FELONY CLASS	SECOND VIOLENT FELONY OFFENSE (1978 - 1995) ¹	SECOND VIOLENT FELONY OFFENSE (After Oct. 1995)	VIOLENT SECOND FELONY OFFENSE (After Oct. 1995)	NON-VIOLENT SEX OFFENSE (Has Prior Non-Violent Felony Conviction) (After April 2007) ²	NON-VIOLENT SEX OFFENSE (Has Prior Violent Felony Conviction) (After Apr. 2007) ²	PREDATORY SEXUAL ASSAULT (After April 2007) ²	ALL OTHER FELONY OFFENSES ³
A-I Felony							
Maximum	N/A (Not Available)	N/A (Not Available)	N/A (Not Available)	N/A (Not Available)	N/A (Not Available)	N/A (Not Available)	N/A (Not Available)
Minimum	N/A (Not Available)	N/A (Not Available)	N/A (Not Available)	N/A (Not Available)	N/A (Not Available)		N/A (Not Available)
A-II Felony							
Maximum	N/A (Not Available)	N/A (Not Available)	N/A (Not Available)	N/A (Not Available)	N/A (Not Available)	Life	N/A (Not Available)
Minimum	N/A (Not Available)	N/A (Not Available)	N/A (Not Available)	N/A (Not Available)	N/A (Not Available)	10 - 25 (minimum sentence fixed by court)	N/A (Not Available)
Class B Felony							
Maximum	12 - 25	10 - 25 (determinate)	8 - 25 (determinate)	8 - 25 (determinate)	9 - 25 (determinate)	N/A (Not Available)	9 - 25
Minimum	6 - 12 1/2 (Minimum = 1/2 of Maximum)	6/7 of determinate sentence	6/7 of determinate sentence	6/7 of determinate sentence	6/7 of determinate sentence		4 1/2 - 12 1/2 (Minimum = 1/2 of maximum sentence)
Class C Felony							
Maximum	8 - 15	7 - 15 (determinate)	5 - 15 (determinate)	5 - 15 (determinate)	6 - 15 (determinate)	N/A (Not Available)	6 - 15
Minimum	4 - 7 1/2 (Minimum = 1/2 of maximum sentence)	6/7 of determinate sentence	6/7 of determinate sentence	6/7 of determinate sentence	6/7 of determinate sentence		3 - 7 1/2 (Minimum = 1/2 of maximum sentence)
Class D Felony							
Maximum	5 - 7	5 - 7 (determinate)	3 - 7 (determinate)	3 - 7 (determinate)	4 - 7 (determinate)	N/A (Not Available)	4 - 7
Minimum	2 1/2 - 3 1/2 (Minimum = 1/2 of maximum)	6/7 of determinate sentence	6/7 of determinate sentence	6/7 of determinate sentence	6/7 of determinate sentence		2 - 3 1/2 (Minimum = 1/2 of maximum sentence)
Class E Felony							
Maximum	4 years	3 - 4 (determinate)	2 - 4 (determinate)	2 - 4 (determinate)	2 1/2 - 4 (determinate)	N/A (Not Available)	3 - 4
Minimum	2 years (Minimum = 1/2 of maximum)	6/7 of determinate sentence	6/7 of determinate sentence	6/7 of determinate sentence	6/7 of determinate sentence		1 1/2 - 2 (Minimum = 1/2 of maximum sentence)

¹ For offenders in this category, both the instant offense and at least one prior offense are violent felony crimes. Where the instant offense is a violent felony crime and the prior offense is not a violent crime, the sentence ranges used by the court

² Sentences pursuant to the Sex Offender Management and Treatment Act (SOMTA) took effect on April 13, 2007.

³ Under Penal Law 70.07 ("Sentence of Imprisonment for Second Child Sexual Assault Felony Offender"), there are various enhanced sentences for such child sexual assault felonies, where the victim is a child less than fifteen years old. Certain sentences

APPENDIX A-3: SENTENCES TO PRISON FOR DRUG FELONY OFFENSE
RANGE OF MINIMUM AND MAXIMUM SENTENCES ACCORDING TO FELONY CLASS CATEGORY

FELONY CLASS	1st Felony Drug Offender (Prior to Jan. 2005)	1st Felony Drug Offender (After Jan. 2005)²	2nd Felony Drug Offender (Has Prior Violent Felony Conviction) (After Jan. 2005)⁴	2nd Felony Drug Offender (No Prior Violent Felony Conviction) (Jan. 2005 to Apr. 2009)⁴	2nd Felony Drug Offender (No Prior Violent Felony Conviction) (After Apr. 2009)⁵
A-I Felony					
Maximum	Life	8 - 20 (determinate)	15 - 30 (determinate)	12 - 24 (determinate)	12 - 24 (determinate)
Minimum	15 - 25 years (for offenders with Life maximum) (minimum sentence fixed by court)	6/7 of determinate sentence	6/7 of determinate sentence	6/7 of determinate sentence	6/7 of determinate sentence
A-II Felony					
Maximum	Life	3 - 10 (determinate)	8 - 17 (determinate)	6-14 (determinate)	6-14 (determinate)
Minimum	3 - 8 1/3 (minimum sentence fixed by court)	6/7 of determinate sentence	6/7 of determinate sentence	6/7 of determinate sentence	6/7 of determinate sentence
Class B Felony					
Maximum	3 - 25 ¹	1 - 9 (determinate) ³	6 - 15 (determinate)	3 1/2 - 12 (determinate)	2 - 12 (determinate)
Minimum	1 - 8 1/3 (Minimum = 1/3 of maximum sentence)	6/7 of determinate sentence	6/7 of determinate sentence	6/7 of determinate sentence	6/7 of determinate sentence
Class C Felony					
Maximum	3 - 15	1 - 5 1/2 (determinate)	3 1/2 - 9	2 - 8 (determinate)	1 - 8 (determinate)
Minimum	1 - 5 (Minimum = 1/3 of maximum sentence)	6/7 of determinate sentence	6/7 of determinate sentence	6/7 of determinate sentence	6/7 of determinate sentence
Class D Felony					
Maximum	3 - 7	1 - 2 1/2 (determinate)	2 1/2 - 4 1/2	1 1/2 - 4 (determinate)	1 1/2 - 4 (determinate)
Minimum	1 - 2 1/3 (Minimum = 1/3 of maximum sentence)	6/7 of determinate sentence	6/7 of determinate sentence	6/7 of determinate sentence	6/7 of determinate sentence
Class E Felony					
Maximum	3 - 4	1 - 1 1/2 (determinate)	2 - 2 1/2	1 1/2 - 2 (determinate)	1 1/2 - 2 (determinate)
Minimum	1 - 1 1/3 (Minimum = 1/3 of maximum sentence)	6/7 of determinate sentence	6/7 of determinate sentence	6/7 of determinate sentence	6/7 of determinate sentence

¹ For Class B Sale of Drugs on School Grounds (committed before January 13, 2005) the maximum sentence range is 6 - 25 years. The minimum is 1/3 the maximum sentence.

² Sentences pursuant to Drug Law Reform Act of 2004, effective January 13, 2005.

³ For Class B Sale of Drugs on School Grounds (committed after January 13, 2005), the range of determinate sentences is 2 to 9 years.

⁴ Sentences pursuant to Drug Law Reform Act of 2004, signed December 2004, effective date for new sentences January 13, 2005.

⁵ Sentences pursuant to the Drug Law Reform Act of 2009 took effect on April 7, 2009.

APPENDIX A-4: SENTENCES TO STATE PRISON FOR PERSISTENT FELONY OFFENSES
RANGE OF MINIMUM AND MAXIMUM SENTENCES ACCORDING TO FELONY CLASS CATEGORY
(Sentencing as a Persistent Felon Unavailable for Drug Offenders after January 2005)¹

FELONY CLASS	VIOLENT FELONY OFFENSE (1978 - 1995)²	VIOLENT FELONY OFFENSE (After Oct. 1995)²	PREDATORY SEXUAL ASSAULT (After Apr. 2007)⁴	ALL OTHER FELONY OFFENSES³
Class A-2 Felony				
Maximum	N/A (Not Available)	N/A (Not Available)	Life	N/A (Not Available)
Minimum	N/A (Not Available)	N/A (Not Available)	10 - 25 (minimum sentence fixed by court)	N/A (Not Available)
Class B Felony				
Maximum	Life	Life	N/A (Not Available)	9 - 25 Life Optional
Minimum	10 - 25 (minimum sentence fixed by judge)	20 - 25 (minimum sentence fixed by judge)	N/A (Not Available)	4 1/2 - 12 1/2 (Minimum = 1/2 of maximum sentence)
Class C Felony				
Maximum	Life	Life	N/A (Not Available)	6 - 15 Life Optional
Minimum	8 - 25 (minimum sentence fixed by judge)	16 - 25 (minimum sentence fixed by judge)	N/A (Not Available)	3 - 7 1/2 (Minimum = 1/2 of maximum sentence)
Class D Felony				
Maximum	Life	Life	N/A (Not Available)	4 - 7 Life Optional
Minimum	6 - 25 (minimum sentence fixed by judge)	12 - 25 (minimum sentence fixed by judge)	N/A (Not Available)	2 - 3 1/2 (Minimum = 1/2 of maximum sentence)
Class E Felony				
Maximum	Life	Life	N/A (Not Available)	3 - 4 Life Optional
Minimum	Statute does not specify minimum term	Statute does not specify minimum term	N/A (Not Available)	1 1/2 - 2 (Minimum = 1/2 of maximum sentence)

¹ Sentencing as a "Persistent Felon Offender" was no longer available for drug offenders whose drug crime was committed after January 13, 2005 pursuant to Drug Law Reform Act of 2004.

² To be sentenced as a "Persistent Violent Felony Offender," the instant offense and at least two prior offenses must be legislatively designated violent felonies.

³ A person convicted of a third felony could be sentenced as a second felony offender.

⁴ Sentences pursuant to the Sex Offender Management and Treatment Act (SOMTA) took effect on April 13, 2007.

**APPENDIX A-5: RANGE OF MINIMUM AND MAXIMUM
SENTENCES BY FELONY CLASS CATEGORY
JUVENILE OFFENDERS**

AGES	CRIME CLASSIFICATION	SPECIFIC CRIME	MINIMUM SENTENCE RANGE	MAXIMUM SENTENCE RANGE
13	A-I	Murder 2nd (except Felony Murder)	5 - 9 Years	Life
14, 15	A-I	Murder 2nd (Felony Murder included but restricted to felonies listed below)	5 - 9 Years	Life
14, 15	A-I	Arson 1st Kidnapping 1st	4 - 6 Years	12 - 15 Years
14, 15	B-Violent	Aggravated Sexual Abuse Arson 2nd Attempt Kidnapping 1st Attempt Murder 2nd Burglary 1st Manslaughter 1st Rape 1st (non-consensual) Robbery 1st Sodomy 1st (non-consensual)	1/3 Maximum Sentence	3 - 10 Years
14, 15	C-Violent	Assault 1st (intentional) Burglary 2nd (weapon or injury) Robbery 2nd (weapon or injury)	1/3 Maximum Sentence	3 - 7 Years

APPENDIX A-6: Range of Sentences Under Second Child Sexual Assault

Current Conviction - Sexual Assault Against a Child	If Prior Felony Conviction was for Sexual Assault Against a Child	Then Sentence Must Be:
Class B Felony	Class B or C Felony	Indeterminate: 15 - 25 to Life
Class B Felony	Class D or E Felony	Determinate: 12 to 30 years
Class C Felony	Class B or C Felony	Determinate: 12 to 30 years or Indeterminate: 15 - 25 years
Class C Felony	Class D or E Felony	Determinate: 10 to 25 years
Class D Felony	Any Felony	Determinate: 5 to 15 years
Class E Felony	Any Felony	Determinate: 4 to 12 years

¹ Penal Law 70.07 became effective February 1, 2001.

APPENDIX B

Crime Code	Crime Description	Effective Date	Repeal Date	Legal Authority	Crime Class	Crime Type	VFO
100	MURDER (DEG'LESS PRIOR 9-1-74)	19670901	.	PL 125.25	A	VFO	NO
101	MURDER 1ST	19740901	.	PL 125.27	A	VFO	NO
102	MURDER 2ND	19740901	.	PL 125.25	A	VFO	Y-Attem only
103	AGGRAVATED MURDER	20051221	.	PL 125.26	A	VFO	NO
201	MANSLAUGHTER 1ST	19780901	.	PL 125.20	B	VFO	Yes
202	MANSLAUGHTER 2ND	19670901	.	PL 125.15	C	CVO	NO
203	ABORTION 1ST	19670901	.	PL 125.45	D	CVO	NO
204	ABORTION 2ND	19670901	.	PL 125.40	E	CVO	NO
205	AGGRAV MANSLAUGHTER 1ST DEGREE	20051221	.	PL 125.22	B	VFO	Yes
206	AGGRAV MANSLAUGHTER 2ND DEGREE	20051221	.	PL 125.21	C	VFO	Yes
300	CRIM NEGLIGENT HOMICIDE	19670901	.	PL 125.10	E	CVO	NO
301	VEHICULAR MANSLAUGHTER 2ND	19851101	.	PL 125.12	D	CVO	NO
302	VEHICULAR MANSLAUGHTER 1ST	19851101	.	PL 125.13	C	CVO	NO
303	AGGRAV CRIM NEGLIGENT HOMICIDE	20051221	.	PL 125.11	C	VFO	Yes
304	AGGR VEHICULAR HOMICIDE	20071101	.	PL 125.14	B	CVO	NO
401	RAPE 1ST	19780901	.	PL 130.35	B	VFO	Yes
402	RAPE 2ND	19670901	20070412	PL 130.30	D	CVO	NO
403	RAPE 3RD	19670901	.	PL 130.25	E	CVO	NO
404	RAPE 2ND	20070413	.	PL 130.30	D	VFO	Y-exclude atts
501	ROBBERY 1ST	19670901	.	PL 160.15	B	VFO	Yes
502	ROBBERY 2ND	19780901	.	PL 160.10	C	VFO	Yes
503	ROBBERY 3RD	19670901	.	PL 160.05	D	CVO	NO
600	ASSAULT 1ST DEGREE	19961101	.	PL 120.10	B	VFO	Yes
601	ASSAULT 1ST	19670901	19961031	PL 120.10	C	VFO	Yes
602	ASSAULT 2ND	19670901	.	PL 120.05	D	VFO	Y-exclude atts
604	RECKLESS ENDANGERMENT 1ST	19670901	.	PL 120.25	D	CVO	NO
607	PROM A SUICIDE ATTEMPT	19670901	.	PL 120.30	E	CVO	NO
608	AGGRAV ASSAULT/PEACE OFF.	19810702	.	PL 120.11	B	VFO	Yes
610	VEHICULAR ASSAULT 2ND	19851101	.	PL 120.03	E	CVO	NO
611	VEHICULAR ASSAULT 1ST	19851101	.	PL 120.04	D	CVO	NO
612	AGGR ASLT ON PERSON 11 YRS	19901101	.	PL 120.12	E	CVO	NO
613	MENACING 1ST	19921101	.	PL 120.13	E	CVO	NO
614	GANG ASSAULT 1ST DEGREE	19961101	.	PL 120.07	B	VFO	Yes
615	GANG ASSAULT 2ND DEGREE	19961101	.	PL 120.06	C	VFO	Yes
616	ASLT:POLICE OFF/FIREMAN/EMT	19961101	.	PL 120.08	C	VFO	Yes
617	ASLT BY OPER OF A VESSEL	19860805	.	NAV 49	E	CVO	NO
618	STALKING 1ST SUB 1	19991201	.	PL 120.60	D	VFO	Y-exclude atts
619	STALKING 2ND DEGREE	19991201	.	PL 120.55	E	CVO	NO
621	MENACING POLICE/PEACE OFFICER	20051221	.	PL 120.18	D	VFO	Y-exclude atts
622	RECKLESS ASSAULT OF A CHILD	20061101	.	PL 120.02	D	VFO	Y-exclude atts
623	RECK ASLT CHILD:DAY CARE PROV	19981101	.	PL 120.01	E	CVO	NO
624	LURING A CHILD TO COMMIT CRIME	20081004	.	PL 120.70	E	CVO	NO
625	LURING A CHILD TO COMMIT B FEL	20081004	.	PL 120.70	D	CVO	NO

Crime Code	Crime Description	Effective Date	Repeal Date	Legal Authority	Crime Class	Crime Type	VFO
626	LURING A CHILD TO COMMIT A FEL	20081004		. PL 120.70	C	CVO	NO
627	AGGRAVATED VEHICULAR ASSAULT	20071101		. PL 120.04-A	C	CVO	NO
628	STALKING 1ST SUB 2	19991201		. PL 120.60	D	CVO	NO
629	ASSAULT ON A JUDGE	20111117		. PL 120.09	C	VFO	Yes
630	LV SCENE OF ACCIDENT - BOAT	19860805		. NAV 47	E	CVO	NO
631	STRANGULATION 1ST DEGREE	20101111		. PL 121.13	C	VFO	Yes
632	STRANGULATION 2ND DEGREE	20101111		. PL 121.12	D	VFO	Y-exclude atts
701	BURGLARY 1ST	19780901		. PL 140.30	B	VFO	Yes
702	BURGLARY 2ND	19670901		. PL 140.25	C	VFO	Yes
703	BURGLARY 3RD	19670901		. PL 140.20	D	PDO	NO
800	FAIL TO REG:SEX OFF 1ST OFF	19960121	20070816	COR 0168-T	A	CVO	NO
801	SEX OFFENDER REG VIOL-2ND OFF	19960121		. COR 0168-T	D	CVO	NO
802	SEX OFFENDER REG VIOL-1ST OFF	20070817		. COR 0168-T	E	CVO	NO
1001	GRAND LARCENY - NOT AUTO 1ST	19670901	19861031	PL 155.40	C	PDO	NO
1002	GRAND LARCENY - NOT AUTO 2ND	19670901	19861031	PL 155.35	D	PDO	NO
1003	GRAND LARCENY - NOT AUTO 3RD	19670901	19861031	PL 155.30	E	PDO	NO
1004	GRAND LARCENY - NOT AUTO 1ST	19861101		. PL 155.42	B	PDO	NO
1005	GRAND LARCENY - NOT AUTO 2ND	19861101		. PL 155.40	C	PDO	NO
1006	GRAND LARCENY - NOT AUTO 3RD	19861101		. PL 155.35	D	PDO	NO
1007	GRAND LARCENY - NOT AUTO 4TH	19861101		. PL 155.30	E	PDO	NO
1010	COMPUTER TRESPASS	19861101		. PL 156.10	E	PDO	NO
1011	COMPUTER TAMPERING 1ST	19861101	19931031	PL 156.25	E	PDO	NO
1012	UNLAW DUPLIC COMP RELATED MATL	19861101		. PL 156.30	E	PDO	NO
1013	CRIM POSS COMP RELATED MATL	19861101		. PL 156.35	E	PDO	NO
1014	WELFARE FRAUD-4TH DEGREE	19951101		. PL 158.10	E	PDO	NO
1015	WELFARE FRAUD-3RD DEGREE	19951101		. PL 158.15	D	PDO	NO
1016	WELFARE FRAUD-2ND DEGREE	19951101		. PL 158.20	C	PDO	NO
1022	CRIM POSS BENEFIT CARD-2ND	19951101		. PL 158.45	D	PDO	NO
1023	CRIM POSS BENEFIT CARD-3RD	19951101		. PL 158.40	E	PDO	NO
1031	COMPUTER TAMPERING 1ST	19931101		. PL 156.27	C	PDO	NO
1032	COMP TAMP-2ND:DEST DATA >\$3000	19931101		. PL 156.26	D	PDO	NO
1033	COMPUTER TAMPERING-3RD	19931101		. PL 156.25	E	PDO	NO
1301	GRAND LARCENY - AUTO 1ST	19670901	19861031	PL 155.40	C	PDO	NO
1302	GRAND LARCENY - AUTO 2ND	19670901	19861031	PL 155.35	D	PDO	NO
1303	GRAND LARCENY - AUTO 3RD	19670901	19861031	PL 155.30	E	PDO	NO
1304	UNAUTH USE OF MV 1ST	19820901		. PL 165.08	D	PDO	NO
1305	UNAUTH USE OF MV 2ND	19820901		. PL 165.06	E	PDO	NO
1306	AUTO STRIPPING-1ST	19841101	19961031	PL 165.10	E	PDO	NO
1307	GRAND LARCENY - AUTO 1ST	19861101		. PL 155.42	B	PDO	NO
1308	GRAND LARCENY - AUTO 2ND	19861101		. PL 155.40	C	PDO	NO
1309	GRAND LARCENY - AUTO 3RD	19861101		. PL 155.35	D	PDO	NO
1310	GRAND LARCENY - AUTO 4TH	19861101		. PL 155.30	E	PDO	NO
1311	AUTO STRIPPING-1ST	19961101		. PL 165.11	D	PDO	NO

Crime Code	Crime Description	Effective Date	Repeal Date	Legal Authority	Authority	Crime Class	Crime Type	Crime VFO
1312	AUTO STRIPPING-2ND	19961101	.	PL	165.10	E	PDO	NO
1401	CRIM POSS STOLEN PROP 1ST	19670901	19861031	PL	165.50	D	PDO	NO
1402	CRIM POSS STOLEN PROP 2ND	19670901	19761031	PL	165.45	E	PDO	NO
1404	UNLAW USE, SECRET SCI. MAT.	19670901	.	PL	165.07	E	PDO	NO
1405	CRIM POSS STOLEN PROP 1ST	19861101	.	PL	165.54	B	PDO	NO
1406	CRIM POSS STOLEN PROP 2ND	19861101	.	PL	165.52	C	PDO	NO
1407	CRIM POSS STOLEN PROP 3RD	19861101	.	PL	165.50	D	PDO	NO
1408	CRIM POSS STOLEN PROP 4TH	19861101	.	PL	165.45	E	PDO	NO
1411	TRADEMARK COUNTERFEITING 1ST	19921101	.	PL	165.73	C	PDO	NO
1412	TRADEMARK COUNTERFEITING 2ND	19921101	.	PL	165.72	E	PDO	NO
1413	POSSESSION SKIMMER DEVICE-1ST	20081101	.	PL	190.86	E	PDO	NO
1501	TAMPER W/ PUBLIC RECORDS 1ST	19670901	.	PL	175.25	D	PDO	NO
1502	FALSIFY BUS RECORDS 1ST	19670901	.	PL	175.10	E	PDO	NO
1503	OFFER FALSE INST FILING 1ST	19670901	.	PL	175.35	E	PDO	NO
1504	ISSUING A FALSE CERTIFICATE	19670901	.	PL	175.40	E	PDO	NO
1505	CRIM USURY 2ND	19760901	.	PL	190.40	E	PDO	NO
1506	UNLAW CONCEALING A WILL	19670901	.	PL	190.30	E	PDO	NO
1515	CRIM IMPERSONATION 1ST	19800901	.	PL	190.26	E	PDO	NO
1520	CRIM USURY 1ST	19760901	.	PL	190.42	C	PDO	NO
1521	SCHEME TO DEFRAUD 1ST	19770101	.	PL	190.65	E	PDO	NO
1525	FAIL TO REG AS BROKER/ADVISOR	19591001	.	GB	359-E	E	PDO	NO
1526	CRIM USE ACCESS DEVICE-1ST	19961101	.	PL	190.76	E	PDO	NO
1527	IDENTITY THEFT 1ST	20021101	.	PL	190.80	D	PDO	NO
1528	IDENTITY THEFT 2ND DEGREE	20021101	.	PL	190.79	E	PDO	NO
1529	UNLAWFUL POSS PERSONAL ID- 1ST	20021101	.	PL	190.83	D	PDO	NO
1530	UNLAWFUL POSS PERSONAL ID- 2ND	20021101	.	PL	190.82	E	PDO	NO
1531	MONEY LAUNDERING-1ST	20001101	.	PL	470.20	B	PDO	NO
1532	MONEY LAUNDERING-2ND	20001101	.	PL	470.15	C	PDO	NO
1533	MONEY LAUNDERING-3RD	20001101	.	PL	470.10	D	PDO	NO
1534	MONEY LAUNDERING-4TH	20001101	.	PL	470.05	E	PDO	NO
1535	MONEY LAUNDER-SUPPORT TERROR 1	20040723	.	PL	470.24	B	PDO	NO
1536	MONEY LAUNDER-SUPPORT TERROR 2	20040723	.	PL	470.23	C	PDO	NO
1537	MONEY LAUNDER-SUPPORT TERROR 3	20040723	.	PL	470.22	D	PDO	NO
1538	MONEY LAUNDER-SUPPORT TERROR 4	20040723	.	PL	470.21	E	PDO	NO
1539	OBSTRUCT GOVT ADMIN:SPRAY DEV	19961101	.	PL	195.08	D	PDO	NO
1540	INSURANCE FRAUD 1ST	19811101	19861031	PL	176.20	D	PDO	NO
1541	INSURANCE FRAUD 2ND	19811101	19861031	PL	176.15	E	PDO	NO
1544	INSURANCE FRAUD 1ST	19861101	.	PL	176.30	B	PDO	NO
1545	INSURANCE FRAUD 2ND	19861101	.	PL	176.25	C	PDO	NO
1546	INSURANCE FRAUD 3RD	19861101	.	PL	176.20	D	PDO	NO
1547	INSURANCE FRAUD 4TH	19861101	.	PL	176.15	E	PDO	NO
1549	DEFRAUDING THE GOVERNMENT	19861101	.	PL	195.20	E	PDO	NO
1550	ENTERPRISE CORRUPTION	19861101	.	PL	460.20	B	PDO	NO

Crime Code	Crime Description	Effective Date	Repeal Date	Legal Authority	Class	Crime Type	Crime VFO
1551	FALSE RETURN - CORPORATE TAXES	19851101	20090406	TAX 1805	E	PDO	NO
1552	FRAUD IN SALE OF SECURITIES	19820901	.	GB 352-C	E	PDO	NO
1553	UNAUTH PRACTICE OF PROFESSION	19760823	.	ED 6512	E	PDO	NO
1554	FALSE TAX RETURN - PERSONAL	19851101	20090406	TAX 1804	E	PDO	NO
1555	REPEAT FAILURE:FILE PERSONL TAX	19851101	20090406	TAX 1802	E	PDO	NO
1556	MONEY LAUNDERING 1ST	19881101	20001031	PL 470.15	D	PDO	NO
1557	MONEY LAUNDERING 2ND	19881101	20001031	PL 470.10	E	PDO	NO
1558	MISUSE OF FOOD STAMPS	19670901	.	SW 147	E	PDO	NO
1559	CONTRACTS FOR MONOPOLY	19750701	.	GB 341	E	PDO	NO
1560	MOTOR FUEL TAX-FELONY	19851101	.	TAX 1812	E	PDO	NO
1561	REPEATED FAILURE TO FILE CORP	19851101	.	TAX 1803	E	PDO	NO
1562	CIG TAX-POSS/TRANS>20K ILL CIG	20001114	.	TAX 1814	E	PDO	NO
1563	LIEN LAW	19670901	.	LL 079-A	D	PDO	NO
1564	UNAUTH COMM TO SOLICIT CONTRIB	19670901	.	EL 14-126	E	PDO	NO
1565	CIG TAX-ATT TO EVADE OR DEFEAT	19851101	.	TAX 1814	E	PDO	NO
1566	CIG TAX-POSS/TRANS>30K ILL CIG	20090407	.	TAX 1814	D	PDO	NO
1567	MED ASSIST PROV PROH PRACTICES	19981101	.	SW 366-D	E	PDO	NO
1570	AGGRAVATED INSURANCE FRAUD 4TH	19961009	.	PL 176.35	D	PDO	NO
1571	RESIDENTIAL MORTGAGE FRAUD-1ST	20081101	.	PL 187.25	B	PDO	NO
1572	RESIDENTIAL MORTGAGE FRAUD-2ND	20081101	.	PL 187.20	C	PDO	NO
1576	HEALTH CARE FRAUD-2ND DEGREE	20061101	.	PL 177.20	C	PDO	NO
1578	HEALTH CARE FRAUD-4TH DEGREE	20061101	.	PL 177.10	E	PDO	NO
1580	FALSE RETURNS/REPORTS NYC	19850101	.	AC 11-4004	E	PDO	NO
1581	LEGISLATOR RECEIVING BRIBE	19670901	.	POL 076	D	PDO	NO
1582	UNLAW FEE PAYMT LEG OFF EMPLOY	19670901	.	POL 077	E	PDO	NO
1590	FRAUDULENT PRACTICES	19670901	.	WC 0114	E	PDO	NO
1592	CRIMINAL TAX FRAUD-2ND DEGREE	20090407	.	TAX 1805	C	PDO	NO
1593	CRIMINAL TAX FRAUD-3RD DEGREE	20090407	.	TAX 1804	D	PDO	NO
1594	CRIMINAL TAX FRAUD-4TH DEGREE	20090407	.	TAX 1803	E	PDO	NO
1595	FAILURE TO FILE INCOME TAX	20100811	.	TAX 1808	E	PDO	NO
1600	FORGERY 1ST	19670901	.	PL 170.15	C	PDO	NO
1601	CRIM POSS FORGED INST 1ST	19670901	.	PL 170.30	C	PDO	NO
1602	FORGERY 2ND	19670901	.	PL 170.10	D	PDO	NO
1603	CRIM POSS FORGED INST 2ND	19670901	.	PL 170.25	D	PDO	NO
1604	CRIM POSS FORGERY DEVICES	19670901	.	PL 170.40	D	PDO	NO
1608	UNLAW USING SLUGS 1ST	19670901	.	PL 170.60	E	PDO	NO
1609	FORGERY OF VEHICLE ID. NUMBER	19710401	.	PL 170.65	E	PDO	NO
1610	ILLEGAL POSS VEH ID NO PLATE	19710401	.	PL 170.70	E	PDO	NO
1612	AGGRAVATED IDENTITY THEFT	20081104	.	PL 190.80-A	D	PDO	NO
1700	ARSON 1ST	19710901	.	PL 150.20	A	VFO	Y-Attem only
1701	ARSON 2ND	19710901	.	PL 150.15	B	VFO	Yes
1702	ARSON 3RD	19710901	.	PL 150.10	C	CVO	NO
1703	ARSON 4TH	19710901	.	PL 150.05	E	CVO	NO

Crime Code	Crime Description	Effective Date	Repeal Date	Legal Authority	Class	Crime Type	Crime VFO
1711	AGGRAVATED USE PYROTECHNICS 1	20031101	.	PL 405.18	D	VFO	Y-exclude atts
1801	PROM PROSTITUTION 1ST	19780901	.	PL 230.32	B	PDO	NO
1802	PROM PROSTITUTION 2ND	19780901	.	PL 230.30	C	PDO	NO
1803	PROM PROSTITUTION 3RD	19780901	.	PL 230.25	D	PDO	NO
1807	PATRONIZING A PROSTITUTE 1ST	19780901	.	PL 230.06	D	CVO	NO
1808	PATRONIZING A PROSTITUTE 2ND	19780901	.	PL 230.05	E	PDO	NO
1814	COMPELLING PROSTITUTION	20051101	.	PL 230.33	B	PDO	NO
1815	SEX TRAFFICKING	20071101	.	PL 230.34	B	PDO	NO
1901	SODOMY 1ST	19670901	20031031	PL 130.50	B	VFO	Yes
1902	SODOMY 2ND	19670901	20031031	PL 130.45	D	CVO	NO
1903	SODOMY 3RD	19670901	20031031	PL 130.40	E	CVO	NO
1905	SEXUAL ABUSE 1ST	19670901	.	PL 130.65	D	VFO	Y-exclude atts
1907	INCEST	19670901	20061031	PL 255.25	E	CVO	NO
1910	AGGRAVATED SEXUAL ABUSE	19780901	19881031	PL 130.70	B	VFO	Yes
1911	AGGRAVATED SEXUAL ABUSE 1ST	19881101	.	PL 130.70	B	VFO	Yes
1912	AGGRAVATED SEXUAL ABUSE 2ND	19881101	.	PL 130.67	C	VFO	Yes
1913	AGGRAVATED SEXUAL ABUSE 3RD	19961101	.	PL 130.66	D	VFO	Y-exclude atts
1914	COURSE SEX CONDUCT-CHILD 1ST	19960801	.	PL 130.75	B	VFO	Yes
1915	COURSE SEX CONDUCT-CHILD 2ND	19960801	.	PL 130.80	D	VFO	Y-exclude atts
1916	FEMALE GENITAL MUTILATION	19971101	.	PL 130.85	E	CVO	NO
1917	PERSISTENT SEXUAL ABUSE	20010201	.	PL 130.53	E	VFO	Yes
1918	FACILIT SEX OFF/CONTROL SUB	20010201	20070412	PL 130.90	D	PDO	NO
1919	AGGRAVATED SEXUAL ABUSE 4TH	20010201	20070412	PL 130.65-A	E	PDO	NO
1920	AGGRAVATED SEXUAL ABUSE 4TH	20070413	.	PL 130.65-A	E	VFO	Y-exclude atts
1921	CRIM SEXUAL ACT 1ST	20031101	.	PL 130.50	B	VFO	Yes
1922	CRIM SEXUAL ACT 2ND	20031101	20070412	PL 130.45	D	CVO	NO
1923	CRIM SEXUAL ACT 3RD	20031101	.	PL 130.40	E	CVO	NO
1924	PREDATORY SEXUAL ASSAULT	20060623	.	PL 130.95	A	VFO	NO
1925	PRED SEX ASSAULT AGAINST CHILD	20060623	.	PL 130.96	A	VFO	NO
1926	INCEST-1ST DEGREE	20061101	.	PL 255.27	B	VFO	Yes
1927	INCEST- 2ND DEGREE	20061101	.	PL 255.26	D	CVO	NO
1928	INCEST- 3RD DEGREE	20061101	.	PL 255.25	E	CVO	NO
1929	CRIM SEXUAL ACT 2ND	20070413	.	PL 130.45	D	VFO	Y-exclude atts
1930	FORCIBLE TOUCHING	20010201	.	PL 130.52	A	CVO	NO
1938	FACILIT SEX OFF/CONTROL SUBST	20070413	.	PL 130.90	D	VFO	Y-exclude atts
1959	SELL/ISSUE NY INSTRMNT W/O LIC	19670901	.	BL 0650	E	PDO	NO
2000	CRIM SALE DANGEROUS DRUG 1ST	19690901	19730831	PL 220.44	A	PDO	NO
2001	CRIM SALE DANGEROUS DRUG 3RD	19670901	19690901	PL 220.30	D	PDO	NO
2003	CRIM POSS DANGEROUS DRUG 5TH	19690901	19830831	PL 220.10	E	PDO	NO
2004	CRIM POSS DANGEROUS DRUG 2ND	19690901	19730831	PL 220.22	B	PDO	NO
2005	CRIM POSS DANGEROUS DRUG 3RD	19670901	19690831	PL 220.20	E	PDO	NO
2006	CRIM POSS DANGEROUS DRUG 3RD	19690901	19730831	PL 220.20	C	PDO	NO
2007	CRIM POSS DANGEROUS DRUG 1ST	19700424	19730831	PL 220.23	A	PDO	NO
2008	USE OF DRUG PARAPHERNALIA 1ST	19670901	.	PL 220.55	D	PDO	NO

Crime Code	Crime Description	Effective Date	Repeal Date	Legal Authority	Authority	Crime Class	Crime Type	VFO
2010	CRIM INJECT OF A NARC DRUG	19710901	.	PL	220.46	E	PDO	NO
2011	IMIT CONTROL SUBS-2ND VIOL	19820901	.	PHL	3383	E	PDO	NO
2012	CRIM POSS PRECURSORS	19730901	.	PL	220.60	E	PDO	NO
2013	CRIM SALE CONTR SUBSTANCE 1ST	19730901	.	PL	220.43	A	PDO	NO
2014	CRIM POSS CONTR SUBSTANCE 1ST	19730901	.	PL	220.21	A	PDO	NO
2015	CRIM SALE CONTR SUBSTANCE 2ND	19730901	.	PL	220.41	A	PDO	NO
2016	CRIM POSS CONTR SUBSTANCE 2ND	19730901	.	PL	220.18	A	PDO	NO
2017	CRIM SALE CONTR SUBSTANCE 3RD	19790901	.	PL	220.39	B	PDO	NO
2018	CRIM POSS CONTR SUBSTANCE 3RD	19790901	.	PL	220.16	B	PDO	NO
2019	CRIM SALE CONTR SUBSTANCE 4TH	19730901	19790831	PL	220.37	B	PDO	NO
2020	CRIM POSS CONTR SUBSTANCE 4TH	19730901	19790831	PL	220.12	B	PDO	NO
2021	CRIM SALE CONTR SUBSTANCE 4TH	19790901	.	PL	220.34	C	PDO	NO
2022	CRIM POSS CONTR SUBSTANCE 4TH	19790901	.	PL	220.09	C	PDO	NO
2023	CRIM SALE CONTR SUBSTANCE 5TH	19790901	.	PL	220.31	D	PDO	NO
2024	CRIM POSS CONTR SUBSTANCE 5TH	19790901	.	PL	220.06	D	PDO	NO
2025	CRIM POSS CONTR SUBSTANCE 6TH	19790901	19851031	PL	220.05	E	PDO	NO
2027	CRIM SALE MARIHUANA 1ST	19770729	.	PL	221.55	C	PDO	NO
2028	CRIM POSS MARIHUANA 1ST	19770729	.	PL	221.30	C	PDO	NO
2029	CRIM SALE MARIHUANA 2ND	19770729	.	PL	221.50	D	PDO	NO
2030	CRIM POSS MARIHUANA 2ND	19770729	.	PL	221.25	D	PDO	NO
2031	CRIM SALE MARIHUANA 3RD	19770729	.	PL	221.45	E	PDO	NO
2032	CRIM POSS MARIHUANA 3RD	19770729	.	PL	221.20	E	PDO	NO
2039	CRIM SALE CONTR SUB - SCHOOL	19861101	.	PL	220.44	B	PDO	NO
2040	CRIM SALE PRESCRIPTION	19861101	.	PL	220.65	C	PDO	NO
2041	CRIM POSS METH MANUF MATERIAL1	20051001	.	PL	220.71	E	PDO	NO
2042	CRIM POSS PRECURSORS OF METH	20051001	.	PL	220.72	E	PDO	NO
2043	UNLAWFUL MANUFACTURE METH-3RD	20051001	.	PL	220.73	D	PDO	NO
2044	UNLAWFUL MANUFACTURE METH-2ND	20051001	.	PL	220.74	C	PDO	NO
2045	UNLAWFUL MANUFACTURE METH-1ST	20051001	.	PL	220.75	B	PDO	NO
2046	UNL DISPOSAL METH LAB MATERIAL	20051001	.	PL	220.76	E	PDO	NO
2047	CRIM SALE CONTR SUBS TO CHILD	20091101	.	PL	220.48	B	PDO	NO
2048	OPERATE MAJOR DRUG TRAFFICKER	20091101	.	PL	220.77	A	PDO	NO
2049	USE CHILD COMMIT CONTR SUB OFF	20061101	.	PL	220.28	E	PDO	NO
2091	CRIM SALE DANGEROUS DRUG 3RD	19690901	19730831	PL	220.35	C	PDO	NO
2092	CRIM SALE CONTR SUBSTANCE 3RD	19730901	19790831	PL	220.39	A	PDO	NO
2093	CRIM POSS CONTR SUBSTANCE 3RD	19730901	19790831	PL	220.16	A	PDO	NO
2094	CRIM SALE DANGEROUS DRUG 2ND	19690901	19730831	PL	220.40	B	PDO	NO
2095	CRIM POSS DANGEROUS DRUG 2ND	19670901	19690901	PL	220.15	D	PDO	NO
2096	CRIM SALE DANGEROUS DRUG 2ND	19670901	19690831	PL	220.35	C	PDO	NO
2097	CRIM POSS DANGEROUS DRUG 4TH	19690901	19730831	PL	220.15	D	PDO	NO
2098	CRIM POSS CONTRL SUBST-6TH	19730901	19790831	PL	220.06	D	PDO	NO
2099	CRIM SALE DANGEROUS DRUG 4TH	19690901	19730831	PL	220.30	D	PDO	NO
2100	CRIM POSS WEAP 1ST	19740901	.	PL	265.04	B	VFO	Yes
2101	CRIM POSS WEAP 3RD SUB 4-8 VFO	19740901	.	PL	265.02	D	VFO	Yes

Crime Code	Crime Description	Effective Date	Repeal Date	Legal Authority	Crime Class	Crime Type	Crime VFO
2102	MFG/TRANS/ETC DANGEROUS WEAPON	19670901	.	PL 265.10	D	CVO	NO
2103	PROHIBITED USE OF WEAPONS	19670901	.	PL 265.35	D	CVO	NO
2104	PROHIBITED USE OF WEAPONS	19740901	.	PL 265.35	E	CVO	NO
2108	CRIM POSS WEAP 2ND	19780901	.	PL 265.03	C	VFO	Yes
2109	POSSESS DANGEROUS WEAPON-FEL	19670901	19740831	PL 265.05	D	VFO	NO
2111	CRIM POSS WEAP 3RD SUB 1,2,3	19740901	.	PL 265.02	D	CVO	NO
2112	AGGRAVATED CRIM POSS WEAPON	20130316	.	PL 265.19	C	VFO	Yes
2113	CRIM POSS WEAP 3RD SUB 9,10	20130316	.	PL 265.02	D	VFO	Y-exclude atts
2116	CRIM SALE FIREARM 3RD-DEG	20051221	.	PL 265.11	D	VFO	Y-exclude atts
2117	CRIM SALE FIREARM 1ST-DEG	19991101	.	PL 265.13	B	VFO	Yes
2118	CRIM SALE FIREARM 2ND-DEG	19991101	.	PL 265.12	C	VFO	Yes
2119	CRIM SALE OF FIREARM 3 PRE-06	19991101	20051220	PL 265.11	D	CVO	NO
2120	CRIM SALE FIREARM/AID MINOR	19991101	.	PL 265.14	C	VFO	Yes
2121	CRIM USE OF FIREARMS 1ST	19800812	.	PL 265.09	B	VFO	Yes
2122	CRIM USE OF FIREARMS 2ND	19800812	.	PL 265.08	C	VFO	Yes
2123	CRIM SALE FIREARM 1ST	19800812	19911031	PL 265.12	D	VFO	Y-exclude atts
2124	CRIM SALE FIREARMS 2ND	19800812	19911031	PL 265.11	E	CVO	NO
2125	UNLAW WEARING BODY VEST	19841101	.	PL 270.20	E	CVO	NO
2126	POSSESS EXPLOSIVES W O LIC	19840901	.	LAB 458	D	PDO	NO
2127	CRIM SALE FIREARM 1ST DEG	19911101	19991031	PL 265.13	C	VFO	Yes
2128	CRIM SALE FIREARM 2ND DEG	19911101	19991031	PL 265.12	D	VFO	Y-exclude atts
2129	CRIM SALE FIREARM 3RD DEG	19911101	19991031	PL 265.11	E	CVO	NO
2130	CRIM SALE FIREARM/AID OF MINOR	19911101	19991031	PL 265.14	D	VFO	Y-exclude atts
2131	ILGL STORAGE OF EXPLOSIVES	19840901	.	LAB 453	E	PDO	NO
2132	ILGL CONSTR/MAINT OF MAGAZINE	19840901	.	LAB 454	E	PDO	NO
2140	CRIM SALE FIREARM TO A MINOR	19991101	.	PL 265.16	C	CVO	NO
2141	FLEE OFFICER IN MOTOR VEH- 2ND	20061101	.	PL 270.30	E	CVO	NO
2142	FLEE OFFICER IN MOTOR VEH- 1ST	20061101	.	PL 270.35	D	CVO	NO
2202	DWI:ALCOHOL OR DRUGS 2 OFF	19881101	.	VTL 1192	E	PDO	NO
2203	DWI:ALCOHOL OR DRUGS 3RD OFF	19961101	.	VTL 1192	D	PDO	NO
2204	AGGRAV DWI:1 PRIOR CONV-10 YRS	20061101	.	VTL 1192	E	PDO	NO
2205	AGGRAV DWI:2 PRIOR CONV-10 YRS	20061101	.	VTL 1192	D	PDO	NO
2206	AGG DWI:WITH CHILD-1ST OFFENSE	20091218	.	VTL 1192	E	PDO	NO
2300	OBSCENITY 2ND	19820901	.	PL 235.06	E	PDO	NO
2301	OBSCENITY 1ST	19820901	.	PL 235.07	D	PDO	NO
2302	DISSEM INDECENT MAT. TO MINORS	19690901	19961031	PL 235.21	E	PDO	NO
2306	DISSEM INDECENT MAT MINOR 1ST	19961101	.	PL 235.22	D	PDO	NO
2307	DISSEM INDECENT MAT MINOR 2ND	19961101	.	PL 235.21	E	PDO	NO
2400	ABANDONMENT OF CHILD	19670901	.	PL 260.00	E	CVO	NO
2402	NON-SUPPORT CHILD 1ST DEGREE	19970901	.	PL 260.06	E	PDO	NO
2501	USE OF CHILD IN A SEXUAL PERF	19771109	.	PL 263.05	C	CVO	NO
2502	PROM OBSCENE SEX PERF BY CHILD	19771109	.	PL 263.10	D	CVO	NO
2503	PROM SEXUAL PERF BY A CHILD	19771109	.	PL 263.15	D	CVO	NO
2507	POSS OBSCENE SEX PERF BY CHILD	19961101	.	PL 263.11	E	CVO	NO

Crime Code	Crime Description	Effective Date	Repeal Date	Legal Authority	Crime Class	Crime Type	VFO
2508	POSS A SEX PERF BY A CHILD	19961101	.	PL 263.16	E	CVO	NO
2509	FACILITATE SEX PERFORM BY CHILD	20081101	.	PL 263.30	B	CVO	NO
2511	ENDANG VUL/ELDER:1ST DEGREE	19981101	.	PL 260.34	D	CVO	NO
2512	ENDANG VUL/ELDER: 2ND DEGREE	19981101	.	PL 260.32	E	CVO	NO
2600	MFG/SALE ILLICIT ALC BEV SUBSQ	19670901	.	ABC 155	E	PDO	NO
2705	ANIMAL FIGHTING-FELONY	19841101	.	AM 351	E	PDO	NO
2706	THEFT OF SERVICES	19921101	.	PL 165.15	E	PDO	NO
2802	DRIV IMP/DRUGS-SUBSQ OFFENSE	19881101	.	VTL 1192	E	PDO	NO
2803	DRIV IMP/DRUGS 3RD OFF	19961101	.	VTL 1192	D	PDO	NO
2903	LV SCENE OF ACC W/O REPORTING	19800901	.	VTL 0600	E	PDO	NO
2904	AGGR UNLIC OPER VTL511.3 1ST	19851101	.	VTL 0511	E	PDO	NO
2905	UNLICENSED VEHICLE DISMANTLING	19841101	19961031	PL 165.10	E	PDO	NO
2906	SELL MV/TRLR/PART W/CHANG NUMB	19830727	.	VTL 0421	E	PDO	NO
2907	MAKE FALSE REPORT RE STOLEN MV	19670901	.	VTL 0426	E	PDO	NO
2908	OFFENSES RE CERT OF TITLE	19720701	.	VTL 2130	E	PDO	NO
2909	UNLAW VEHICLE DISMANTLER	19800901	.	VTL 0415-A	E	PDO	NO
2910	LV SCENE OF ACCIDENT - DEATH	20051101	.	VTL 0600	D	PDO	NO
3009	FALSELY REPORTING INCIDENT 1ST	19770901	20010916	PL 240.00	E	PDO	NO
3010	PLACING A FALSE BOMB-1ST	19991201	20010916	PL 240.62	E	PDO	NO
3011	FALSELY REPORTING INCIDENT-1ST	20010917	.	PL 240.60	D	VFO	Y-exclude atts
3012	FALSELY REPORTING INCIDENT-2ND	20010917	.	PL 240.55	E	VFO	Y-exclude atts
3013	AGGR HARASSMENT 1ST	19820901	.	PL 240.31	E	PDO	NO
3014	CRIM NUISANCE 1ST	19891101	.	PL 240.46	E	PDO	NO
3015	AGG HAR:EMPLOYEE BY INMATE	19960607	.	PL 240.32	E	PDO	NO
3016	PLACING FALSE BOMB	20010917	.	PL 240.63	D	VFO	Y-exclude atts
3017	PLACE FALSE BOMB-1ST	20010917	.	PL 240.62	D	VFO	Y-exclude atts
3018	PLACE FALSE BOMB-2ND	20010917	.	PL 240.61	E	VFO	Y-exclude atts
3019	AGGRAVATED FAMILY OFFENSE	20130123	.	PL 240.75	E	PDO	NO
3021	HINDER PROSECUTION TERRORISM 1	20010917	.	PL 490.35	B	VFO	Yes
3022	HINDER PROSECUTION TERRORISM 2	20010917	.	PL 490.30	C	VFO	Yes
3023	SUPPORT ACT OF TERRORISM 1ST	20010917	.	PL 490.15	C	VFO	Yes
3024	SUPPORT ACT OF TERRORISM 2ND	20010917	.	PL 490.10	D	VFO	Y-exclude atts
3025	MAKE TERRORISTIC THREAT	20010917	.	PL 490.20	D	VFO	Y-exclude atts
3031	CRIM USE CHEM/BIOLOG WEAPON-1ST	20040727	.	PL 490.55	A	VFO	NO
3032	CRIM USE CHEM/BIOLOG WEAPON-2ND	20040727	.	PL 490.50	A	VFO	NO
3033	CRIM USE CHEM/BIOLOG WEAPON-3RD	20040727	.	PL 490.47	B	VFO	Yes
3034	CRIM POSS CHEM/BIOLOG WEAPON-1ST	20040727	.	PL 490.45	A	VFO	NO
3035	CRIM POSS CHEM/BIOLOG WEAPON-2ND	20040727	.	PL 490.40	B	VFO	Yes
3036	CRIM POSS CHEM/BIOLOG WEAPON-3RD	20040727	.	PL 490.37	C	VFO	Yes
3301	PROM GAMB LOTT/POLICY 1ST	19670901	.	PL 225.10	E	PDO	NO
3302	PROM GAMB BOOKMAKING 1ST	19670901	.	PL 225.10	E	PDO	NO
3303	POSS GAMB RCDS LOTT/POLICY 1ST	19670901	.	PL 225.20	E	PDO	NO
3304	POSS GAMB RCDS BOOKMAKING 1ST	19670901	.	PL 225.20	E	PDO	NO

Crime Code	Crime Description	Effective Date	Repeal Date	Legal Authority	Crime Class	Crime Type	VFO
3401	CRIM MISCHIEF 2ND	19710901	.	PL 145.10	D	PDO	NO
3402	CRIM MISCHIEF 3RD	19710901	.	PL 145.05	E	PDO	NO
3404	CRIM TAMPERING 1ST	19670901	.	PL 145.20	D	PDO	NO
3406	CRIM MISCHIEF 1ST	19710901	.	PL 145.12	B	PDO	NO
3409	TAMPER W/ CONSUMER PROD 1ST	19861101	.	PL 145.45	E	PDO	NO
3410	CEMETERY DESECRATION 1ST	19971101	.	PL 145.23	E	PDO	NO
3501	CRIM TRESPASS 1ST	19690901	.	PL 140.17	D	PDO	NO
3601	UNLAW POSS MEDICAL WASTE 1ST	19890707	.	ECL 71-4404	E	PDO	NO
3602	UNLAW POSS HAZARDOUS WASTE 2ND	19810721	.	ECL 71-2707	E	PDO	NO
3603	WILLFULLY SETS FOREST FIRE	19720901	.	ECL 09-1105	E	PDO	NO
3604	ENDNGR PUB HLTH/SFTY/ENVRT 3RD	19861101	.	ECL 71-2712	E	PDO	NO
3605	UNLAW RELEASE MED WASTE 2ND	19890722	.	ECL 71-4407	E	PDO	NO
3606	RELEASE OF SOLID WASTE 2ND OFF	19960101	.	ECL 71-2703	E	PDO	NO
3607	ENDNGR PUB HLTH/SFTY/ENVRT 1ST	19861101	.	ECL 71-2714	C	PDO	NO
3901	ESCAPE 1ST	19670901	.	PL 205.15	D	PDO	NO
3902	ESCAPE 2ND	19670901	.	PL 205.10	E	PDO	NO
3904	ABSCOND FROM TEMP RELEASE 1ST	19720621	.	PL 205.17	E	PDO	NO
3907	PROM PRISON CONTRABAND 1ST	19670901	.	PL 205.25	D	PDO	NO
3909	HINDERING PROSECUTION 1ST	19670901	.	PL 205.65	D	PDO	NO
3910	HINDERING PROSECUTION 2ND	19670901	.	PL 205.60	E	PDO	NO
3912	ABSCOND COMMUNITY TREAT FAC	19860724	.	PL 205.19	E	PDO	NO
4001	KIDNAPPING 1ST	19670901	.	PL 135.25	A	VFO	Y-Attem only
4002	KIDNAPPING 2ND	19670901	.	PL 135.20	B	VFO	Yes
4003	UNLAW IMPRISONMENT 1ST	19670901	.	PL 135.10	E	CVO	NO
4004	CUSTODIAL INTERFERENCE 1ST	19670901	.	PL 135.50	E	CVO	NO
4005	SUBSTITUTION OF CHILDREN	19670901	.	PL 135.55	E	CVO	NO
4006	COERCION 1ST	19670901	.	PL 135.65	D	CVO	NO
4010	BODY STEALING	19670901	20061031	PHL 4216	E	PDO	NO
4011	BODY STEALING	20061101	.	PHL 4216	D	PDO	NO
4012	OPENING GRAVES	19971101	20061031	PHL 4218	E	PDO	NO
4020	LABOR TRAFFICKING	20071101	.	PL 135.35	D	CVO	NO
4200	AGG. CRIMINAL CONTEMPT	19960901	.	PL 215.52	D	PDO	NO
4201	BAIL JUMPING 2ND	19830908	.	PL 215.56	E	PDO	NO
4202	TAMPER W/ PHYS EVIDENCE	19670901	.	PL 215.40	E	PDO	NO
4203	CRIM CONTEMPT 1ST	19720901	.	PL 215.51	E	PDO	NO
4204	UNLAW GRAND JURY DISCLOSURE	19770719	.	PL 215.70	E	PDO	NO
4215	TAMPER W/ A WITNESS 3RD	19820901	.	PL 215.11	E	PDO	NO
4216	TAMPER W/ A WITNESS 1ST	19820901	.	PL 215.13	B	PDO	NO
4217	TAMPER W/ A WITNESS 2ND	19820901	.	PL 215.12	D	PDO	NO
4218	BAIL JUMPING 1ST	19830908	.	PL 215.57	D	PDO	NO
4300	BIGAMY	19670901	.	PL 255.15	E	PDO	NO
4601	PERJURY 1ST	19670901	.	PL 210.15	D	PDO	NO
4602	PERJURY 2ND	19670901	.	PL 210.10	E	PDO	NO
4603	MAKE APP SWORN FALSE STATE 1ST	19670901	.	PL 210.40	E	PDO	NO

Crime Code	Crime Description	Effective Date	Repeal Date	Legal Authority	Crime Class	Crime Type	VFO
4800	BRIBERY 2ND	19730901	19861031	PL 200.00	D	PDO	NO
4801	BRIBERY 1ST	19730901	.	PL 200.04	B	PDO	NO
4802	BRIBE REC 1ST	19730901	.	PL 200.12	B	PDO	NO
4803	REWARDING OFF. MISCONDUCT 1ST	19730901	.	PL 200.22	C	PDO	NO
4804	BRIBE REC 2ND	19730901	19861031	PL 200.10	D	PDO	NO
4805	REC. REW., OFF. MISCONDUCT 1ST	19730901	.	PL 200.27	C	PDO	NO
4806	REWARDING OFF. MISCONDUCT 2ND	19730901	.	PL 200.20	E	PDO	NO
4807	REC. REW., OFF. MISCONDUCT 2ND	19730901	.	PL 200.25	E	PDO	NO
4808	BRIBE REC BY A JUROR	19670901	.	PL 215.20	D	PDO	NO
4809	BRIBE REC BY A WITNESS	19670901	.	PL 215.05	D	PDO	NO
4810	BRIBING A JUROR	19851101	.	PL 215.19	D	PDO	NO
4811	BRIBING A WITNESS	19670901	.	PL 215.00	D	PDO	NO
4812	SPORTS BRIBING	19670901	.	PL 180.40	D	PDO	NO
4813	SPORTS BRIBE RECEIVING	19670901	.	PL 180.45	E	PDO	NO
4814	COMMERCIAL BRIBING 1ST	19830901	.	PL 180.03	E	PDO	NO
4815	COMMERCIAL BRIBE REC 1ST	19830901	.	PL 180.08	E	PDO	NO
4818	BRIBING A LABOR OFFICIAL	19670901	.	PL 180.15	D	PDO	NO
4819	BRIBE REC BY A LABOR OFFICIAL	19670901	.	PL 180.25	D	PDO	NO
4820	BRIBE GIVING FOR PUBLIC OFFICE	19670901	.	PL 200.45	D	PDO	NO
4821	BRIBE REC FOR PUBLIC OFFICE	19670901	.	PL 200.50	D	PDO	NO
4826	TAMPER W/ SPORTS CONTEST 1ST	19820926	.	PL 180.51	E	PDO	NO
4827	IMP INTGRTY PARIMUTUEL BET 2ND	19820926	.	PL 180.52	E	PDO	NO
4828	IMP INTGRTY PARIMUTUEL BET 1ST	19820926	.	PL 180.53	D	PDO	NO
4829	INTIMIDATN, VICTIM/WITNESS 2ND	19851101	.	PL 215.16	D	VFO	Y-exclude atts
4830	INTIMIDATN, VICTIM/WITNESS 3RD	19851101	.	PL 215.15	E	PDO	NO
4831	BRIBERY 2ND	19861101	.	PL 200.03	C	PDO	NO
4832	BRIBERY 3RD	19861101	.	PL 200.00	D	PDO	NO
4833	BRIBE REC 2ND	19861101	.	PL 200.11	C	PDO	NO
4834	BRIBE REC 3RD	19861101	.	PL 200.10	D	PDO	NO
4835	INTIMIDATN, VICTIM/WITNESS 1ST	19851101	.	PL 215.17	B	VFO	Yes
5301	CRIM DIVERSION PRESCRIP-1ST	19951101	.	PL 178.25	C	PDO	NO
5302	CRIM DIVERSION PRESCRIP-2ND	19951101	.	PL 178.20	D	PDO	NO
5303	CRIM DIVERSION PRESCRIP-3RD	19951101	.	PL 178.15	E	PDO	NO
5400	EAVESDROPPING	19670901	.	PL 250.05	E	PDO	NO
5407	UNLAWFUL SURVEILLANCE 1ST	20030811	.	PL 250.50	D	PDO	NO
5408	UNLAW SURVEILLANCE 2ND(SUB 1)	20030811	.	PL 250.45	E	PDO	NO
5409	UNLAW SURVEILLANCE 2ND(2,3,4)	20030811	.	PL 250.45	E	PDO	NO
5410	DISSEM UNLAW SURV IMAGE 1ST	20030811	.	PL 250.60	E	PDO	NO
6001	RIOT 1ST	19670901	.	PL 240.06	E	PDO	NO
6002	CRIM ANARCHY	19670901	.	PL 240.15	E	PDO	NO
6400	CONSPIRACY 1ST	19730901	19780831	PL 105.15	B	PDO	NO
6401	CONSPIRACY 1ST	19780901	.	PL 105.17	A	VFO	NO
6402	CONSPIRACY 2ND	19780901	.	PL 105.15	B	PDO	NO
6403	CONSPIRACY 3RD	19780901	.	PL 105.13	D	PDO	NO

Crime Code	Crime Description	Effective Date	Repeal Date	Legal Authority	Crime Class	Crime Type	VFO
6404	CONSPIRACY 4TH	19780901	.	PL 105.10	E	PDO	NO
6500	CRIM SOLICITATION 1ST	19780901	.	PL 100.13	C	PDO	NO
6501	CRIM SOLICITATION 2ND	19780901	.	PL 100.10	D	PDO	NO
6502	CRIM SOLICITATION 3RD	19780901	.	PL 100.08	E	PDO	NO
6600	CRIM FACILITATION 1ST	19780901	.	PL 115.08	B	PDO	NO
6601	CRIM FACILITATION 2ND	19780901	.	PL 115.05	C	PDO	NO
6602	CRIM FACILITATION 3RD	19780901	.	PL 115.01	E	PDO	NO
6700	UNAUTH TRANSFER OF RECD SOUND	19901101	.	PL 275.10	E	PDO	NO
6704	FAIL DISCLOSE ORIGIN REC-1ST	19901101	.	PL 275.40	E	PDO	NO
6705	UNAUTH RECORDING-1ST:ADV SALE	19901101	.	PL 275.30	E	PDO	NO
7001	JO - AGG SEXUAL ABUSE 1ST	19881101	.	PL 130.70	B	VFO	Yes
7002	JO - ARSON 1ST	19710901	.	PL 150.20	A	VFO	Y-Attem only
7003	JO - ARSON 2ND	19710901	.	PL 150.15	B	VFO	Yes
7004	JO - ASSAULT 1ST	19670901	19961031	PL 120.10	C	VFO	Yes
7005	JO - BURGLARY 1ST	19670901	.	PL 140.30	B	VFO	Yes
7006	JO - BURGLARY 2ND	19670901	.	PL 140.25	C	VFO	Yes
7007	JO - KIDNAPPING 1ST	19670901	.	PL 135.25	A	VFO	Y-Attem only
7008	JO - MANSLAUGHTER 1ST	19670901	.	PL 125.20	B	VFO	Yes
7009	JO - MURDER 2ND	19740901	.	PL 125.25	A	VFO	Y-Attem only
7010	JO - RAPE 1ST	19670901	.	PL 130.35	B	VFO	Yes
7011	JO - ROBBERY 1ST	19670901	.	PL 160.15	B	VFO	Yes
7012	JO - ROBBERY 2ND	19670901	.	PL 160.10	C	VFO	Yes
7013	JO - SODOMY 1ST	19670901	20031031	PL 130.50	B	VFO	Yes
7014	JO - ASSAULT 1ST DEGREE	19961101	.	PL 120.10	B	VFO	Yes
7015	JO - CRIM POSS WEAP 2ND SCHOOL	19981101	.	PL 265.03	C	VFO	Yes
7016	JO - CRIM POSS WEAP 3RD SCHOOL	19981101	.	PL 265.02	D	VFO	Y-exclude atts
7017	JO - CRIMINAL SEXUAL ACT 1ST	20031101	.	PL 130.50	B	VFO	Yes
8000	YOUTHFUL OFFENDER	19841128	.			PDO	NO
8001	YO - MURDER	19841128	.			VFO	NO
8002	YO - MANSLAUGHTER	19841128	.			VFO	NO
8003	YO - CRIM NEGLIGENT HOMICIDE	19841128	.			CVO	NO
8004	YO - RAPE	19841128	.			VFO	NO
8005	YO - ROBBERY	19841128	.			VFO	NO
8006	YO - ASSAULT	19841128	.			VFO	NO
8007	YO - BURGLARY	19841128	.			VFO	NO
8010	YO - GRAND LARCENY (NOT AUTO)	19841128	.			PDO	NO
8013	YO - GRAND LARCENY (AUTO)	19841128	.			PDO	NO
8014	YO - CRIM POSS STOLEN PROP	19841128	.			PDO	NO
8015	YO - FRAUD	19841128	.			PDO	NO
8016	YO - FORGERY	19841128	.			PDO	NO
8017	YO - ARSON	19841128	.			CVO	NO
8018	YO - PROMOTING PROSTITUTION	19841128	.			PDO	NO
8019	YO - SODOMY / SEXUAL ABUSE	19841128	20031031			VFO	NO
8020	YO - DRUG OFFENSE	19841128	.			PDO	NO

Crime Code	Crime Description	Effective Date	Repeal Date	Legal Authority	Crime Class	Crime Type	VFO
8021	YO - DANGEROUS WEAPONS	19841128	.		VFO	NO	
8022	YO - DRIVING WHILE INTOXICATED	19841128	.		PDO	NO	
8024	YO - ABANDMNT/NONSUPPORT CHILD	19841128	.		CVO	NO	
8026	YO - MFG/SALE ILLICIT ALC BEV	19841128	.		PDO	NO	
8028	YO - DRIVING WHILE IMP/DRUGS	19841128	.		PDO	NO	
8033	YO - PROG GAMB LOTTERY/POLICY	19841128	.		PDO	NO	
8034	YO - CRIMINAL MISCHIEF	19841128	.		PDO	NO	
8035	YO - CRIMINAL TRESPASS	19841128	.		PDO	NO	
8039	YO - ESC/ABS, RES. ARREST	19841128	.		PDO	NO	
8040	YO - KIDNAPPING	19841128	.		VFO	NO	
8042	YO - TAMPERING WITH A WITNESS	19900110	.		PDO	NO	
8043	YOUTHFUL OFFENDER - J.O.	19841128	.		VFO	NO	
8044	YO - CRIM SEXUAL ACT/SEX ABUSE	20031101	.		VFO	NO	
9400	SEX MOTV FEL AGGRAVATED MURDER	20070413	20120516	PL 125.26	A	VFO	NO
9401	SEX MOTV FEL ARSON 1ST	20070413	20120517	PL 150.20	A	VFO	Y-Attem only
9402	SEX MOTV FEL ARSON 2ND	20070413	20120517	PL 150.15	B	VFO	Yes
9403	SEX MOTV FEL ASSAULT 1ST	20070413	20120517	PL 120.10	B	VFO	Yes
9404	SEX MOTV FELONY ASSAULT 2ND	20070413	20120517	PL 120.05	D	VFO	Y-exclude atts
9405	SEX MOTV FEL BURGLARY 1ST	20070413	20120517	PL 140.30	B	VFO	Yes
9406	SEX MOTV FEL BURGLARY 2ND	20070413	20130115	PL 140.25	C	VFO	Yes
9407	SEX MOTV FEL BURGLARY 3RD	20070413	20120517	PL 140.20	D	PDO	NO
9408	SEX MOTV FEL GANG ASSAULT 1ST	20070413	20120517	PL 120.07	B	VFO	Yes
9409	SEX MOTV FEL GANG ASSAULT 2ND	20070413	20120517	PL 120.06	C	VFO	Yes
9410	SEX MOTV FEL KIDNAPPING 1ST	20070413	20120517	PL 135.25	A	VFO	Y-Attem only
9411	SEX MOTV FEL KIDNAPPING 2ND	20070413	20120517	PL 135.20	B	VFO	Yes
9412	SEX MOTV FEL MANSLAUGHTER 1ST	20070413	20120517	PL 125.20	B	VFO	Yes
9413	SEX MOTV FEL MANSLAUGHTER 2ND	20070413	20120517	PL 125.15	C	CVO	NO
9414	SEX MOTV FEL MURDER 1ST	20070413	20120517	PL 125.27	A	VFO	NO
9415	SEX MOTV FEL MURDER 2ND	20070413	20120517	PL 125.25	A	VFO	Y-Attem only
9416	SEX MOTV FEL PROM PROST 1ST	20070413	20120517	PL 230.32	B	PDO	NO
9417	SEX MOTV FEL PROM PROST 2ND	20070413	20120517	PL 230.30	C	PDO	NO
9418	SEX MOTV FEL ROBBERY 1ST	20070413	20120517	PL 160.15	B	VFO	Yes
9419	SEX MOTV FEL ROBBERY 2ND	20070413	20120517	PL 160.10	C	VFO	Yes
9420	SEX MOTV FEL ROBBERY 3RD	20070413	20120517	PL 160.05	D	CVO	NO
9421	SEX MOTV FEL STALKING 1ST (1)	20070413	20120517	PL 120.60	D	VFO	Y-exclude atts
9422	SEX MOTV FEL STALKING 1ST (2)	20070413	20120517	PL 120.60	D	CVO	NO
9423	SEX MOTV FEL STRANGULATION 1ST	20101111	20120517	PL 121.13	C	VFO	Yes
9424	SEX MOTV FEL STRANGULATION 2ND	20101111	20120517	PL 121.12	D	VFO	Y-exclude atts
9425	SMF COMPELLING PROSTITUTION	20070413	20120517	PL 230.33	B	PDO	NO
9426	SMF DISEM INDECENT MAT MINOR 1	20070413	20120517	PL 235.22	D	PDO	NO
9427	SMF PROM OBSCENE SEX PERF CHLD	20070413	20120517	PL 263.10	D	CVO	NO
9428	SMF PROM SEX PERFORMANCE CHLD	20070413	20120517	PL 263.15	D	CVO	NO
9429	SMF USE OF CHILD IN SEX PERF	20070413	20120517	PL 263.05	C	CVO	NO
9501	ROBBERY 1ST (PRIOR 9/1/78)	19670901	19780831	PL 160.15	B	VFO	NO

Crime Code	Crime Description	Effective Date	Repeal Date	Legal Authority	Crime Class	Crime Type	VFO
9502	ROBBERY 2ND (PRIOR 9/1/78)	19670901	19780831	PL 160.10	C	VFO	NO
9503	RAPE 1ST (PRIOR 9/1/78)	19670901	19780831	PL 130.35	B	VFO	NO
9504	SODOMY-1ST (PRIOR 9/1/78)	19670901	19780831	PL 130.50	B	VFO	NO
9506	CRIM POSS WEAPON 2 PRE-9/1/78	19740901	19780831	PL 265.03	C	VFO	NO
9507	MANSLAUGHTER 1ST (PRIOR 9/1/78)	19670901	19780831	PL 125.20	B	VFO	NO
9508	BURGLARY 1ST (PRIOR 9/1/78)	19670901	19780831	PL 140.30	B	VFO	NO
9509	MURDER 2ND PRE-9/1/78	19670901	19780831	PL 125.25	A	VFO	NO

Prepared By:

Arianna E. Komninos
Program Research Specialist II
Program Planning, Research, & Evaluation

Arin Starzyk
Excelsior Service Fellow
Program Planning, Research, & Evaluation

December 2014