

State of New York
Department of Corrections
and
Community Supervision

Building Number 2
Harriman Office Campus
Albany, New York 12226

STATISTICAL OVERVIEW
Year 2011 Court Commitments



Andrew M. Cuomo
Governor



Brian Fischer
Commissioner

Table of Contents

Statistical Overview	2
Introduction	3
Section 1: Type of Admission	5
Section 2: Commitment Offense.....	6
Section 3: Felony Offender Status	7
Section 4: Felony Class Category	8
Section 5: Minimum and Maximum Sentences	11
Section 6: Prior Adult Criminal Record	17
Section 7: Drug Commitments	18
Section 8: Gender	20
Section 9: Race/Ethnic Status	23
Section 10: Age at Admission	24
Section 11: County and Region of Commitment	25
Section 12: Country of Birth.....	28
Section 13: Marital Status.....	30
Section 14: Jail Time	31
Section 15: Life Without Parole	33
Section 16: Determinate Sentencing	34
APPENDIX A.....	38
APPENDIX B.....	45
CRIME CODE TABLE.....	46

Statistical Overview

Year 2011 Court Commitments

This document describes the characteristics of offenders admitted to the New York State Department of Corrections and Community Supervision during calendar year 2011 (N=26,480). The report concentrates on inmates admitted into a state correctional facility for the first time on their current sentence (14,496). This overview presents information on various points such as commitment offense, felony class category of commitment offense, age at commitment, county of commitment and minimum sentence length. For comparative purposes, multiple tables throughout the report show trends in admission data across the five year period of 2007 through 2011. One table however (Table 8.3) uses a thirty-two year period (1980 through 2011) to illustrate the long-term trend in proportion of new court commitments by gender.

Introduction

In April 2011, the former New York State Department of Correctional Services merged with the former New York State Division of Parole to form the New York State Department of Corrections and Community Supervision (DOCCS). As a result of this merger, this report will include for the first time information on all offenders¹ under the jurisdiction of DOCCS who are incarcerated in a correctional facility² or a parole program facility³. Incarcerated offenders⁴ include both inmates⁵ admitted to a correctional facility as well as incarcerated parolees⁶ admitted to DOCCS correctional or parole program facilities.

Inmate Categories: Prior reports in this series included New Court Commitments, Technical Parole Violators, and Other Admissions⁷. New court commitments are offenders admitted to a DOCCS correctional facility for the first time on their current sentence during calendar year 2011. New court commitments are the primary focus of this report. Technical parole violators are offenders who have had their community supervision status revoked and were given a time assessment by an Administrative Law Judge (ALJ)⁸. They must serve this time assessment in a DOCCS correctional facility. There are two types of technical parole violators in this report who are classified as inmates: technical parole violators who had their community supervision status revoked and must be incarcerated in a DOCCS correctional facility to serve their time assessment; and technical parole violators who had their community supervision status revoked and are participating in an Alternative Drug Treatment Program (ADP). ADP technical parole violators had their community supervision status revoked, however, in lieu of serving the full amount of their time assessment in prison, these offenders were offered the opportunity to participate in a drug treatment program on a voluntary basis. If they successfully complete the program (either 90 days at the Willard Drug Treatment Campus or 45 days at the Edgecombe Residential Treatment Facility), these offenders are released from incarceration upon completion of the program and restored to community supervision. If they do not successfully complete the drug treatment program, they must serve the remainder of their parole violation time assessment in a correctional facility.

Incarcerated Parolees: In addition to the inmate classifications listed, incarcerated parolees are also included in this report. Incarcerated parolees consist of the following three categories:

¹ An offender is defined as a convicted felon under the jurisdiction of DOCCS.

² A correctional facility is a traditional prison in which incarcerated offenders are housed.

³ A parole program facility is a facility that houses a specialized treatment program for offenders under community supervision or returned to prison for violating conditions of parole.

⁴ Incarcerated offenders are offenders who are either owned by a correctional facility or a parole program facility.

⁵ An inmate is an incarcerated offender who is not under community supervision.

⁶ An incarcerated parolee is an incarcerated offender who is under community supervision.

⁷ Other admissions include returns from court ordered discharge, returned escapees, returned absconders from temporary release arrest, returns from erroneous internal administrative discharge, and returns with a stay of release.

⁸ A time assessment reflects a decision of an ALJ presiding over a parole revocation hearing. The time assessment is the period of time that an offender will have to serve in a correctional facility as a consequence of violating the conditions of parole.

Willard Judicially Sanctioned Parolees⁹, Willard Technical Parole Violators¹⁰, and Parole Diversion Program Participants¹¹.

Offender Admissions During Calendar Year 2011: The admissions table below shows that there were 26,480 total admissions to DOCCS facilities during calendar year 2011. Among these admissions, 24,116 (91%) represent inmate admissions and 2,364 (9%) represent incarcerated parolee admissions.

**OFFENDER STATUS AT ADMISSION
DURING CALENDAR YEAR 2011**

	NUMBER	PERCENT
INMATE ADMISSIONS		
NEW COURT COMMITMENTS	14,496	54.7%
TECHNICAL PAROLE VIOLATORS	7,380	27.9%
ALTERNATE DRUG TREATMENT PROGRAM CASES	1,754	6.6%
OTHER ADMISSIONS	486	1.8%
Sub-total	24,116	91.1%
INCARCERATED PAROLEE ADMISSIONS		
WILLARD JUDICIALLY SANCTIONED	537	2.0%
WILLARD PAROLE VIOLATOR	1,080	4.1%
PAROLE DIVERSION PROGRAM PARTICIPANTS	747	2.8%
Sub-total	2,364	8.9%
GRAND TOTAL	26,480	100.0%

⁹ Willard Judicially Sanctioned parolees were sentenced by the court to the Willard Drug Treatment campus as an alternative to incarceration in a DOCCS general confinement facility and participate in the program as incarcerated parolees.

¹⁰ Willard technical parole violators are technical parole violators who were revoked and restored to community supervision status and are participating in the Willard Alternative Drug Treatment Program as incarcerated parolees.

¹¹ There are two types of Parole Diversion Program (PDP) participants. The first type of PDP participant consists of technical parole violators who had a parole warrant lodged against them and who agree to participate in a 45 day Alternative Drug Treatment Program at the Edgecombe Correctional Facility in lieu of proceeding with a parole revocation hearing. If they successfully complete the program, the parole warrant is lifted and they are restored to community supervision status. If they fail to successfully complete the program, they are transferred from the PDP facility to the county jail where they have a parole revocation hearing presided over by an ALJ. The second type of PDP participant consists of parolees whose Parole Officer believed they were in danger of relapsing because of some specific behavior or environmental condition. These parolees were given a choice of either having a parole warrant lodged against them and proceeding with a parole revocation hearing or having the conditions of their parole administratively modified by their Parole Officer and approved by the Parole Officer's Supervising Parole Officer. The modified conditions include participation in the PDP. If the parolee successfully completes the PDP they are returned to community supervision. If they do not successfully complete the PDP parole warrants are lodged against them and they are remanded to a county jail to await a parole revocation hearing. The issuance of the parole warrant for failure to successfully complete the PDP is reviewed by the Quality Control section of the DOCCS Central Office Internal Operations Unit.

Section 1: Type of Admission

There were a total of 24,116 admissions to Department of Corrections and Community Supervision facilities during 2011. Of the total admissions, 14,496 (60%) were new court commitments, another 7,380 (31%) were returned parole violators, 1,754 (7%) were alternate program admissions and 486 (2%) were other admissions.

Figure 1
Type of Admission
2011 Total Admissions, N=24,116

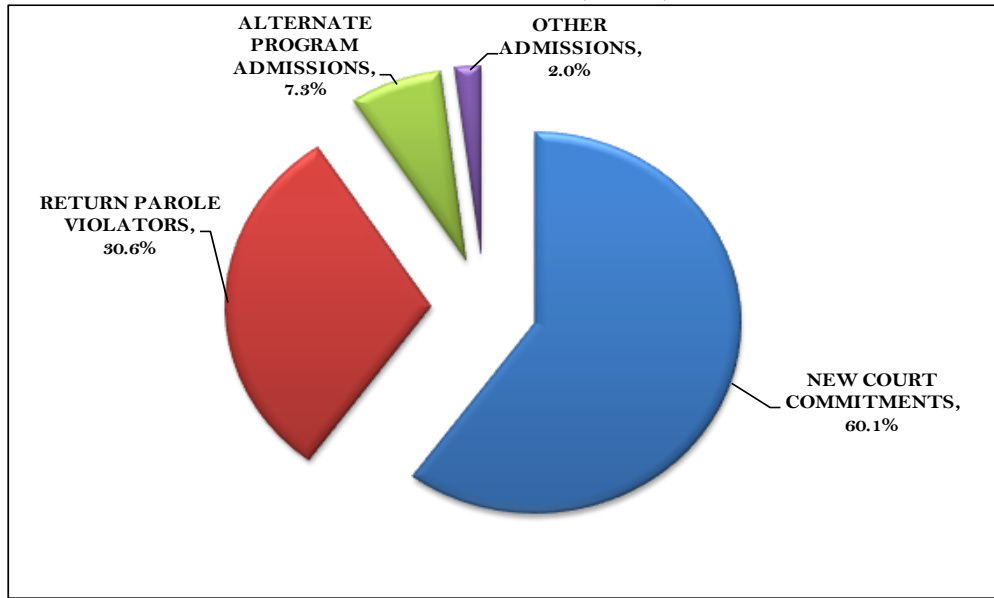


TABLE 1
ADMISSION TYPE BY SEX: 2011 INMATE ADMISSIONS

	MALE		FEMALE		TOTAL	
	NUMBER	PERCENT	NUMBER	PERCENT	NUMBER	PERCENT
NEW COURT COMMITMENTS						
NEW COMMITMENTS	13,444	59.7%	1,052	66.5%	14,496	60.1%
SUBTOTAL	13,444	59.7%	1,052	66.5%	14,496	60.1%
RETURNED FROM PAROLE SUPERVISION						
RETURN POST RELEASE SUPERVISION VIOLATOR	3,708	16.5%	192	12.1%	3,900	16.2%
RETURN PAROLE VIOLATOR	2,395	10.6%	209	13.2%	2,604	10.8%
RETURN CONDITIONAL RELEASE VIOLATOR	840	3.7%	36	2.3%	876	3.6%
SUBTOTAL	6,943	30.8%	437	27.6%	7,380	30.6%
ALTERNATE PROGRAM ADMISSIONS						
ALT - 90 ADMISSIONS	1,636	7.3%	54	3.4%	1,690	7.0%
ALT - 45 ADMISSIONS	64	.3%	0	.0%	64	.3%
SUBTOTAL	1,700	7.5%	54	3.4%	1,754	7.3%
OTHER ADMISSIONS						
RETURN FROM COURT ORDERED DISCHARGE	56	.2%	3	.2%	59	.2%
RETURN ESCAPEE	3	.0%	0	.0%	3	.0%
RETURN ABSCONDER FROM TEMPORARY RELEASE	40	.2%	1	.1%	41	.2%
RETURN FROM OFFICE OF MENTAL HEALTH	248	1.1%	29	1.8%	277	1.1%
RETURN FROM OTHER AGENCY	45	.2%	4	.3%	49	.2%
RETURN FROM TEMPORARY RELEASE ARREST	28	.1%	1	.1%	29	.1%
RETURN ERROR DISCHARGE	3	.0%	0	.0%	3	.0%
RETURN WITH STAY OF RELEASE	20	.1%	0	.0%	20	.1%
RETURN ERROR DISCHARGE	5	.0%	0	.0%	5	.0%
SUBTOTAL	448	2.0%	38	2.4%	486	2.0%
GRAND TOTAL	22,535	100.0%	1,581	100.0%	24,116	100.0%

Section 2: Commitment Offense

The total number of new court commitments decreased by 2,752 (17,248 to 14,496) or 16% between 2007 and 2011. Within offense type, the greatest change occurred among drug admissions which declined by 43%, from 6,148 in 2007 to 3,510 in 2011. In contrast, admissions for Other Coercive felony offenses decreased 15% between 2007 and 2011 while Violent Felony Offenders increased 4% over the same five-year period.

With regard to the type of felony commitment offense for new court commitments between 2007 and 2011, the proportion of offenders committed for drug commitments decreased from 36% to 24%. During that same five year time period, violent felony commitments increased from 29% to 36%.

**TABLE 2
VIOLENT FELONY STATUS AND CRIME
BY YEAR RECEIVED: 2007-2011 NEW COURT COMMITMENTS**

	2007		2008		2009		2010		2011		TOTAL	
	NUMBER	PERCENT	NUMBER	PERCENT	NUMBER	PERCENT	NUMBER	PERCENT	NUMBER	PERCENT	NUMBER	PERCENT
VIOLENT FELONY OFFENSE												
MURDER	184	1.1%	193	1.2%	164	1.1%	173	1.2%	149	1.0%	863	1.1%
ATTEMPTED MURDER	117	.7%	109	.7%	126	.8%	122	.8%	111	.8%	585	.8%
MANSLAUGHTER 1ST	211	1.2%	197	1.2%	170	1.1%	187	1.3%	176	1.2%	941	1.2%
RAPE 1ST	174	1.0%	140	.9%	153	1.0%	114	.8%	134	.9%	715	.9%
ROBBERY 1ST	589	3.4%	537	3.4%	499	3.3%	527	3.6%	519	3.6%	2,671	3.4%
ROBBERY 2ND	864	5.0%	766	4.8%	861	5.6%	819	5.6%	754	5.2%	4,064	5.2%
ASSAULT 1ST	285	1.7%	267	1.7%	326	2.1%	318	2.2%	306	2.1%	1,502	1.9%
ASSAULT 2ND	479	2.8%	486	3.1%	506	3.3%	471	3.2%	481	3.3%	2,423	3.1%
BURGLARY 1ST	118	.7%	133	.8%	146	1.0%	158	1.1%	135	.9%	690	.9%
BURGLARY 2ND	681	3.9%	715	4.5%	757	4.9%	814	5.5%	877	6.0%	3,844	5.0%
ARSON 1ST,2ND	24	.1%	26	.2%	33	.2%	33	.2%	40	.3%	156	.2%
SODOMY 1ST	111	.6%	108	.7%	95	.6%	106	.7%	89	.6%	509	.7%
SEX AB - 1ST, AG 2	258	1.5%	253	1.6%	256	1.7%	242	1.6%	237	1.6%	1,246	1.6%
WEAPONS OFFENSES	915	5.3%	876	5.5%	1,067	7.0%	1,145	7.8%	1,028	7.1%	5,031	6.5%
KIDNAPPING 1ST, 2ND	21	.1%	14	.1%	22	.1%	32	.2%	33	.2%	122	.2%
OTHER VFO SEX OFFENSES	1	.0%	72	.5%	118	.8%	124	.8%	153	1.1%	468	.6%
OTHER VIOLENT FELONIES	10	.1%	20	.1%	20	.1%	22	.1%	32	.2%	104	.1%
SUBTOTAL	5,042	29.2%	4,912	31.1%	5,319	34.7%	5,407	36.6%	5,254	36.2%	25,934	33.4%
OTHER COERCIVE												
MANSLAUGHTER 2ND	55	.3%	45	.3%	40	.3%	44	.3%	42	.3%	226	.3%
OTHER HOMICIDE	27	.2%	43	.3%	53	.3%	63	.4%	48	.3%	234	.3%
ROBBERY 3RD	567	3.3%	490	3.1%	544	3.6%	525	3.6%	436	3.0%	2,562	3.3%
ATT ASSAULT 2ND	225	1.3%	214	1.4%	239	1.6%	249	1.7%	234	1.6%	1,161	1.5%
CONSPIRACY 2,3,4	115	.7%	108	.7%	76	.5%	80	.5%	107	.7%	486	.6%
OTHER WEAPONS	306	1.8%	320	2.0%	266	1.7%	287	1.9%	279	1.9%	1,458	1.9%
OTHER SEX OFFENSES	346	2.0%	280	1.8%	288	1.9%	244	1.7%	245	1.7%	1,403	1.8%
OTHER COERCIVE	186	1.1%	183	1.2%	192	1.3%	192	1.3%	161	1.1%	914	1.2%
SUBTOTAL	1,827	10.6%	1,683	10.6%	1,698	11.1%	1,684	11.4%	1,552	10.7%	8,444	10.9%
DRUG OFFENSES												
DRUG SALE	3,434	19.9%	2,736	17.3%	2,275	14.8%	2,068	14.0%	1,990	13.7%	12,503	16.1%
DRUG POSSESSION	2,713	15.7%	2,454	15.5%	2,049	13.4%	1,688	11.4%	1,520	10.5%	10,424	13.4%
SUBTOTAL	6,147	35.6%	5,190	32.8%	4,324	28.2%	3,756	25.5%	3,510	24.2%	22,927	29.5%
PROPERTY AND OTHER OFFENSES												
BURGLARY 3RD	977	5.7%	892	5.6%	913	6.0%	864	5.9%	976	6.7%	4,622	6.0%
GRAND LARCENY	742	4.3%	727	4.6%	735	4.8%	671	4.5%	768	5.3%	3,643	4.7%
FORGERY	364	2.1%	306	1.9%	260	1.7%	219	1.5%	274	1.9%	1,423	1.8%
STOLEN PROPERTY	263	1.5%	256	1.6%	240	1.6%	189	1.3%	183	1.3%	1,131	1.5%
DRIVE INTOXICATED	540	3.1%	574	3.6%	591	3.9%	584	4.0%	630	4.3%	2,919	3.8%
CONTEMPT 1ST	173	1.0%	161	1.0%	158	1.0%	219	1.5%	220	1.5%	931	1.2%
ALL OTHER FELONIES	472	2.7%	479	3.0%	461	3.0%	527	3.6%	526	3.6%	2,465	3.2%
SUBTOTAL	3,531	20.5%	3,395	21.5%	3,358	21.9%	3,273	22.2%	3,577	24.7%	17,134	22.1%
YOUTHFUL OFFENDER												
YOUTHFUL OFFENDER	682	4.0%	617	3.9%	603	3.9%	594	4.0%	580	4.0%	3,076	4.0%
SUBTOTAL	682	4.0%	617	3.9%	603	3.9%	594	4.0%	580	4.0%	3,076	4.0%
JUVENILE OFFENDER												
JUVENILE OFFENDER	19	.1%	14	.1%	20	.1%	40	.3%	23	.2%	116	.1%
SUBTOTAL	19	.1%	14	.1%	20	.1%	40	.3%	23	.2%	116	.1%
GRAND TOTAL	17,248	100.0%	15,811	100.0%	15,322	100.0%	14,754	100.0%	14,496	100.0%	77,631	100.0%

Section 3: Felony Offender Status

More than half (57%) of the new court commitments received in 2011 were sentenced as first felony offenders. Among offenders committed to state prison for a violent felony offense, there was a higher concentration of individuals sentenced as first felony offenders (69%) when compared with other crimes. Some offenders sentenced as first felony offenders had a prior conviction for a felony offense. Many of these offenders were convicted of Class A-1 violent felony crimes, which do not permit sentencing as a second felony offender since the penalties for A-1 violent felony crimes are already the most severe. A second felony offender is an individual who was convicted of a violent felony offense and had previously been convicted of a violent felony offense within ten years of the current violent felony offense conviction. A persistent felony offender is an offender who was convicted of a violent felony offense, predatory sexual assault, or predatory sexual assault against a child and had previously been convicted of two violent felony offenses within ten years of the current violent felony offense or predatory sexual offense convictions.

TABLE 3
CRIME BY FELONY STATUS (ROW PERCENTAGES): 2011 NEW COURT COMMITMENTS

COMMITMENT CRIME	FIRST FELONY OFFENDER		SECOND FELONY OFFENDER		PERSIST FELONY OFFENDER		TOTAL	
	NUMBER	ROW PERCENT	NUMBER	ROW PERCENT	NUMBER	ROW PERCENT	NUMBER	ROW PERCENT
VIOLENT FELONY								
MURDER	149	100.0%	0	0.0%	0	0.0%	149	100.0%
ATTEMPTED MURDER	88	79.3%	23	20.7%	0	0.0%	111	100.0%
MANSLT 1ST,AG 2ND	140	79.5%	36	20.5%	0	0.0%	176	100.0%
RAPE 1ST	106	79.1%	27	20.1%	1	0.7%	134	100.0%
ROBBERY 1ST	341	65.7%	165	31.8%	13	2.5%	519	100.0%
ROBBERY 2ND	509	67.5%	227	30.1%	18	2.4%	754	100.0%
ASSAULT 1ST	230	75.2%	70	22.9%	6	2.0%	306	100.0%
ASSAULT 2ND	315	65.5%	166	34.5%	0	0.0%	481	100.0%
BURGLARY 1ST	83	61.5%	47	34.8%	5	3.7%	135	100.0%
BURGLARY 2ND	502	57.2%	352	40.1%	23	2.6%	877	100.0%
ARSON 1ST,2ND	26	65.0%	14	35.0%	0	0.0%	40	100.0%
SODOMY 1ST	79	88.8%	10	11.2%	0	0.0%	89	100.0%
SEXAB-1ST,Ag.2	206	86.9%	30	12.7%	1	0.4%	237	100.0%
WEAPONS OFFENSES	680	66.1%	340	33.1%	8	0.8%	1,028	100.0%
KIDNAPPING 1ST,2ND	22	66.7%	9	27.3%	2	6.1%	33	100.0%
OTHER VFO SEX OFFENSES	133	86.9%	20	13.1%	0	0.0%	153	100.0%
OTHER VIOLENT FELONIES	23	71.9%	9	28.1%	0	0.0%	32	100.0%
SUBTOTAL	3,632	69.1%	1,545	29.4%	77	1.5%	5,254	100.0%
OTHER COERCIVE								
MANSLAUGHTER 2ND	35	83.3%	7	16.7%	0	0.0%	42	100.0%
OTHER HOMICIDE	42	87.5%	6	12.5%	0	0.0%	48	100.0%
ROBBERY 3RD	181	41.5%	255	58.5%	0	0.0%	436	100.0%
ATT ASSAULT 2ND	57	24.4%	177	75.6%	0	0.0%	234	100.0%
CONSPIRACY 2,3,4	51	47.7%	55	51.4%	1	0.9%	107	100.0%
OTHER WEAPONS	58	20.8%	220	78.9%	1	0.4%	279	100.0%
OTHER SEX OFFENSES	191	78.0%	54	22.0%	0	0.0%	245	100.0%
OTHER COERCIVE	102	63.4%	58	36.0%	1	0.6%	161	100.0%
SUBTOTAL	717	46.2%	832	53.6%	3	0.2%	1,552	100.0%
DRUG OFFENSES								
DRUG SALE	801	40.3%	1,189	59.7%	0	0.0%	1,990	100.0%
DRUG POSSESSION	695	45.7%	825	54.3%	0	0.0%	1,520	100.0%
SUBTOTAL	1,496	42.6%	2,014	57.4%	0	0.0%	3,510	100.0%
PROPERTY AND OTHER OFFENSES								
BURGLARY 3RD	375	38.4%	601	61.6%	0	0.0%	976	100.0%
GRAND LARCENY	309	40.3%	458	59.7%	0	0.0%	767	100.0%
FORGERY	97	35.3%	177	64.4%	1	0.4%	275	100.0%
STOLEN PROPERTY	56	30.6%	127	69.4%	0	0.0%	183	100.0%
DRIVE INTOXICATED	627	99.7%	2	0.3%	0	0.0%	629	100.0%
CONTEMPT 1ST	96	43.4%	124	56.1%	1	0.5%	221	100.0%
ALL OTHER FELONIES	303	57.6%	223	42.4%	0	0.0%	526	100.0%
SUBTOTAL	1,863	52.1%	1,712	47.9%	2	0.1%	3,577	100.0%
YOUTHFUL/JUVENILE								
YOUTHFUL OFFENDER	580	100.0%	0	0.0%	0	0.0%	580	100.0%
JUVENILE OFFENDER	23	100.0%	0	0.0%	0	0.0%	23	100.0%
SUBTOTAL	603	100.0%	0	0.0%	0	0.0%	603	100.0%
GRAND TOTAL	8,311	57.3%	6,103	42.1%	82	0.6%	14,496	100.0%

Section 4: Felony Class Category

The New York State Penal Law classifies felonies for the purpose of sentencing into five categories as follows: Class A, B, C, D, and E. Class A represents the most severe offenses, and Class E the least. Class A felonies are further sub-classified for the purpose of sentencing as A-I and A-II.¹² Three percent (3%) of 2011 new court commitments were Class A-I or Class A-II felons. Nearly all (90%) of Class A-II felons (217 of 241) were committed for drug crimes. The remaining 10% of Class A-II offenders (N=24) represent predatory sex offenders (as defined by NYS Penal Law Sections 130.95 and 130.96 enacted in 2007).

Class D felons were the largest felony class, comprising 34% of the new court commitments in 2011.

Figure 4
Felony Class Category
2011 New Commitment Population, N=14,496

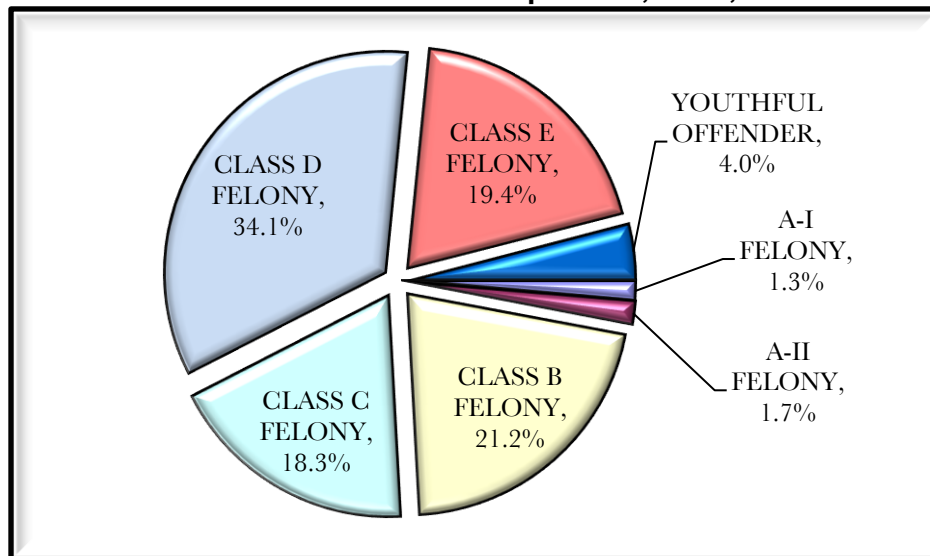


TABLE 4.1
COMMITMENT CRIME BY FELONY CLASS; 2011 NEW COURT COMMITMENTS

COMMITMENT OFFENSE	FELONY CLASS							TOTAL
	A-I	A-II	B	C	D	E	Y.O.	
VIOLENT FELONY	157	24	1,183	1,728	2,146	16	0	5,254
OTHER COERCIVE	0	0	83	99	623	747	0	1,552
DRUG OFFENSES	27	217	1,735	728	650	153	0	3,510
PROPERTY AND OTHER	0	0	49	104	1,525	1,899	0	3,577
YOUTHFUL OFFENDER	0	0	0	0	0	0	580	580
JUVENILE OFFENDER	5	0	18	0	0	0	0	23
TOTAL	189	241	3,068	2,659	4,944	2,815	580	14,496
PERCENT	1.3%	1.7%	21.2%	18.3%	34.1%	19.4%	4.0%	100.0%

¹² New York State Penal Law, Article 55. *2011 New York Law Enforcement Handbook*.

TABLE 4.2
 CRIME BY FELONY CRIME CLASS BY FELONY OFFENDER STATUS: 2011 NEW COURT COMMITMENTS (1 OF 2)

	FIRST FELONY OFFENDER								SECOND FELONY OFFENDER						
	A-I	A-II	CLASS B	CLASS C	CLASS D	CLASS E	Y.O.	SUBTOTAL	A-I	A-II	CLASS B	CLASS C	CLASS D	CLASS E	SUBTOTAL
VIOLENT FELONY															
MURDER	149	0	0	0	0	0	0	149	0	0	0	0	0	0	0
ATTEMPTED MURDER	2	0	86	0	0	0	0	88	0	0	23	0	0	0	23
MANSLT 1ST,AG 2ND	0	0	140	0	0	0	0	140	0	0	36	0	0	0	36
RAPE 1ST	0	0	78	28	0	0	0	106	0	0	15	12	0	0	27
ROBBERY 1ST	0	0	248	93	0	0	0	341	0	0	104	61	0	0	165
ROBBERY 2ND	0	0	0	239	270	0	0	509	0	0	0	77	150	0	227
ASSAULT 1ST	0	0	121	109	0	0	0	230	0	0	32	38	0	0	70
ASSAULT 2ND	0	0	0	18	297	0	0	315	0	0	0	2	164	0	166
BURGLARY 1ST	0	0	72	11	0	0	0	83	0	0	42	5	0	0	47
BURGLARY 2ND	0	0	0	260	242	0	0	502	0	0	0	166	186	0	352
ARSON 1ST,2ND	1	0	14	11	0	0	0	26	0	0	6	8	0	0	14
SODOMY 1ST	0	0	58	21	0	0	0	79	0	0	7	3	0	0	10
SEX.AB-1ST,Ag.2	0	0	46	11	146	3	0	206	0	0	7	3	19	1	30
WEAPONS OFFENSES	0	0	5	329	343	3	0	680	0	0	1	182	150	7	340
KIDNAPPING 1ST,2ND	2	0	12	8	0	0	0	22	0	0	9	0	0	0	9
OTHER VFO SEX OFFENSES	0	20	0	0	113	0	0	133	0	4	0	0	16	0	20
OTHER VIOLENT FELONIES	3	0	0	0	20	0	0	23	0	0	1	0	7	1	9
SUBTOTAL	157	20	880	1,138	1,431	6	0	3,632	0	4	283	557	692	9	1,545
	4.3%	0.6%	24.2%	31.3%	39.4%	0.2%	0.0%	100.0%	0.0%	0.3%	18.3%	36.1%	44.8%	0.6%	100.0%
OTHER COERCIVE															
MANSLAUGHTER 2ND	0	0	0	34	1	0	0	35	0	0	0	7	0	0	7
OTHER HOMICIDE	0	0	12	9	14	7	0	42	0	0	1	2	1	2	6
ROBBERY 3RD	0	0	0	0	154	27	0	181	0	0	0	0	166	89	255
ATT ASSAULT 2ND	0	0	0	0	0	57	0	57	0	0	0	0	1	176	177
CONSPIRACY 2,3,4	0	0	38	1	0	12	0	51	0	0	22	4	1	28	55
OTHER WEAPONS	0	0	0	0	45	13	0	58	0	0	0	0	128	92	220
OTHER SEX OFFENSES	0	0	9	5	24	153	0	191	0	0	1	1	4	48	54
OTHER COERCIVE	0	0	0	29	53	20	0	102	0	0	0	7	29	22	58
SUBTOTAL	0	0	59	78	291	289	0	717	0	0	24	21	330	457	832
	0.0%	0.0%	8.2%	10.9%	40.6%	40.3%	0.0%	100.0%	0.0%	0.0%	2.9%	2.5%	39.7%	54.9%	100.0%
DRUG OFFENSES															
DRUG SALE	6	88	504	111	83	9	0	801	5	27	620	271	223	43	1,189
DRUG POSSESSION	14	88	309	114	146	24	0	695	2	14	302	232	198	77	825
SUBTOTAL	20	176	813	225	229	33	0	1,496	7	41	922	503	421	120	2,014
	1.3%	8.7%	53.5%	18.8%	16.9%	1.7%	0.0%	100.0%	0.3%	2.0%	45.8%	25.0%	20.9%	6.0%	100.0%
PROPERTY AND OTHER															
BURGLARY 3RD	0	0	0	0	323	52	0	375	0	0	0	0	418	183	601
GRAND LARCENY	0	0	17	56	101	135	0	309	0	0	1	20	90	347	458
FORGERY	0	0	0	6	79	12	0	97	0	0	0	9	109	59	177
STOLEN PROPERTY	0	0	1	2	10	43	0	56	0	0	0	0	27	100	127
DRIVE INTOXICATED	0	0	0	0	205	422	0	627	0	0	0	0	2	0	2
CONTEMPT 1ST	0	0	0	0	0	96	0	96	0	0	0	0	0	124	124
ALL OTHER FELONIES	0	0	22	10	88	183	0	303	0	0	8	1	72	142	223
SUBTOTAL	0	0	40	74	806	943	0	1,863	0	0	9	30	718	955	1,712
	0.0%	0.0%	2.1%	4.0%	43.3%	50.6%	0.0%	100.0%	0.0%	0.0%	0.5%	1.8%	41.9%	55.8%	100.0%
YOUTHFUL OFFENDER															
YOUTHFUL OFFENDER	0	0	0	0	0	0	580	580	0	0	0	0	0	0	0
	0.0%	0.0%	0.0%	0.0%	0.0%	0.0%	100.0%	100.0%	0.0%	0.0%	0.0%	0.0%	0.0%	0.0%	0.0%
JUVENILE OFFENDER															
JUVENILE OFFENDER	5	0	18	0	0	0	0	23	0	0	0	0	0	0	0
	21.7%	0.0%	78.3%	0.0%	0.0%	0.0%	0.0%	100.0%	0.0%	0.0%	0.0%	0.0%	0.0%	0.0%	0.0%
GRAND TOTAL	182	196	1,810	1,515	2,757	1,271	580	8,311	7	45	1,238	1,111	2,161	1,541	6,103
	2.2%	2.4%	21.8%	18.2%	33.2%	15.3%	7.0%	100.0%	0.1%	0.7%	20.3%	18.2%	35.4%	25.2%	100.0%

(Continued)

TABLE 4.2
 CRIME BY FELONY CRIME CLASS BY FELONY OFFENDER STATUS: 2011 NEW COURT COMMITMENTS (2 OF 2)

	PERSISTENT FELONY OFFENDER						TOTAL						Y.O.	TOTAL	
	A-II	CLASS B	CLASS C	CLASS D	CLASS E	SUBTOTAL	A-I	A-II	CLASS B	CLASS C	CLASS D	CLASS E			
VIOLENT FELONY															
MURDER	0	0	0	0	0	0	149	0	0	0	0	0	0	0	149
ATTEMPTED MURDER	0	0	0	0	0	0	2	0	109	0	0	0	0	0	111
MANSLT 1ST,AG 2ND	0	0	0	0	0	0	0	0	176	0	0	0	0	0	176
RAPE 1ST	0	1	0	0	0	1	0	0	94	40	0	0	0	0	134
ROBBERY 1ST	0	11	2	0	0	13	0	0	363	156	0	0	0	0	519
ROBBERY 2ND	0	0	8	10	0	18	0	0	0	324	430	0	0	0	754
ASSAULT 1ST	0	2	4	0	0	6	0	0	155	151	0	0	0	0	306
ASSAULT 2ND	0	0	0	0	0	0	0	0	0	20	461	0	0	0	481
BURGLARY 1ST	0	4	1	0	0	5	0	0	118	17	0	0	0	0	135
BURGLARY 2ND	0	0	12	11	0	23	0	0	0	438	439	0	0	0	877
ARSON 1ST,2ND	0	0	0	0	0	0	1	0	20	19	0	0	0	0	40
SODOMY 1ST	0	0	0	0	0	0	0	0	65	24	0	0	0	0	89
SEX.AB-1ST,Ag.2	0	0	0	1	0	1	0	0	53	14	166	4	0	0	237
WEAPONS OFFENSES	0	0	6	1	1	8	0	0	6	517	494	11	0	0	1,028
KIDNAPPING 1ST,2ND	0	2	0	0	0	2	2	0	23	8	0	0	0	0	33
OTHER VFO SEX OFFENSES	0	0	0	0	0	0	0	24	0	0	129	0	0	0	153
OTHER VIOLENT FELONIES	0	0	0	0	0	0	3	0	1	0	27	1	0	0	32
SUBTOTAL	0	20	33	23	1	77	157	24	1,183	1,728	2,146	16	0	0	5,254
	0.0%	26.0%	42.9%	29.9%	1.3%	100.0%	3.0%	0.5%	22.5%	32.9%	40.8%	0.3%	0.0%	0.0%	100.0%
OTHER COERCIVE															
MANSLAUGHTER 2ND	0	0	0	0	0	0	0	0	0	41	1	0	0	0	42
OTHER HOMICIDE	0	0	0	0	0	0	0	0	13	11	15	9	0	0	48
ROBBERY 3RD	0	0	0	0	0	0	0	0	0	0	320	116	0	0	436
ATT ASSAULT 2ND	0	0	0	0	0	0	0	0	0	0	1	233	0	0	234
CONSPIRACY 2,3,4	0	0	0	0	1	1	0	0	60	5	1	41	0	0	107
OTHER WEAPONS	0	0	0	1	0	1	0	0	0	0	174	105	0	0	279
OTHER SEX OFFENSES	0	0	0	0	0	0	0	0	10	6	28	201	0	0	245
OTHER COERCIVE	0	0	0	1	0	1	0	0	0	36	83	42	0	0	161
SUBTOTAL	0	0	0	2	1	3	0	0	83	99	623	747	0	0	1,552
	0.0%	0.0%	0.0%	66.7%	33.3%	100.0%	0.0%	0.0%	5.3%	6.4%	40.1%	48.1%	0.0%	0.0%	100.0%
DRUG OFFENSES															
DRUG SALE	0	0	0	0	0	0	11	115	1,124	382	306	52	0	0	1,990
DRUG POSSESSION	0	0	0	0	0	0	16	102	611	346	344	101	0	0	1,520
SUBTOTAL	0	0	0	0	0	0	27	217	1,735	728	650	153	0	0	3,510
	0.0%	0.0%	0.0%	0.0%	0.0%	0.0%	0.8%	6.2%	49.4%	20.7%	18.5%	4.4%	0.0%	0.0%	100.0%
PROPERTY AND OTHER															
BURGLARY 3RD	0	0	0	0	0	0	0	0	0	0	741	235	0	0	976
GRAND LARCENY	0	0	0	0	1	1	0	0	18	76	191	483	0	0	768
FORGERY	0	0	0	0	0	0	0	0	0	15	188	71	0	0	274
STOLEN PROPERTY	0	0	0	0	0	0	0	0	1	2	37	143	0	0	183
DRIVE INTOXICATED	0	0	0	1	0	1	0	0	0	0	208	422	0	0	630
CONTEMPT 1ST	0	0	0	0	0	0	0	0	0	0	0	220	0	0	220
ALL OTHER FELONIES	0	0	0	0	0	0	0	0	30	11	160	325	0	0	526
SUBTOTAL	0	0	0	1	1	2	0	0	49	104	1,525	1,899	0	0	3,577
	0.0%	0.0%	0.0%	50.0%	50.0%	100.0%	0.0%	0.0%	1.4%	3.3%	42.6%	52.7%	0.0%	0.0%	100.0%
YOUTHFUL OFFENDER															
YOUTHFUL OFFENDER	0	0	0	0	0	0	0	0	0	0	0	0	580	580	580
	0.0%	0.0%	0.0%	0.0%	0.0%	0.0%	0.0%	0.0%	0.0%	0.0%	0.0%	0.0%	100.0%	100.0%	100.0%
JUVENILE OFFENDER															
JUVENILE OFFENDER	0	0	0	0	0	0	5	0	18	0	0	0	0	0	23
	0.0%	0.0%	0.0%	0.0%	0.0%	0.0%	21.7%	0.0%	78.3%	0.0%	0.0%	0.0%	0.0%	0.0%	100.0%
GRAND TOTAL	0	20	33	26	3	82	189	241	3,068	2,659	4,944	2,815	580	580	14,496
	0.0%	24.4%	40.2%	31.7%	3.7%	100.0%	1.3%	1.7%	21.2%	18.3%	34.1%	19.4%	4.0%	4.0%	100.0%

Section 5: Minimum and Maximum Sentences

In general, a minimum sentence reflects the shortest period of time that a person must serve before being considered for release to Community Supervision.

The average minimum sentence for violent felony commitments decreased slightly from 79 months in 2007 to 76 months in 2011. The average minimum sentence for non-violent felony offenders remained stable at 26 months between 2007 and 2011 (see Table 5.3 and Fig. 5.1). However, the overall minimum sentence for all types of crime increased from 41 to 44 months between 2007 and 2011. This phenomenon occurred as a result of the dramatic shift in the composition of crimes in the admission cohorts reflecting fewer drug commitments and more violent felony offender commitments (refer to Section 2 in this report).

Figure 5.1
Average Minimum Sentence by Crime Type
2007-2011 New Court Commitments

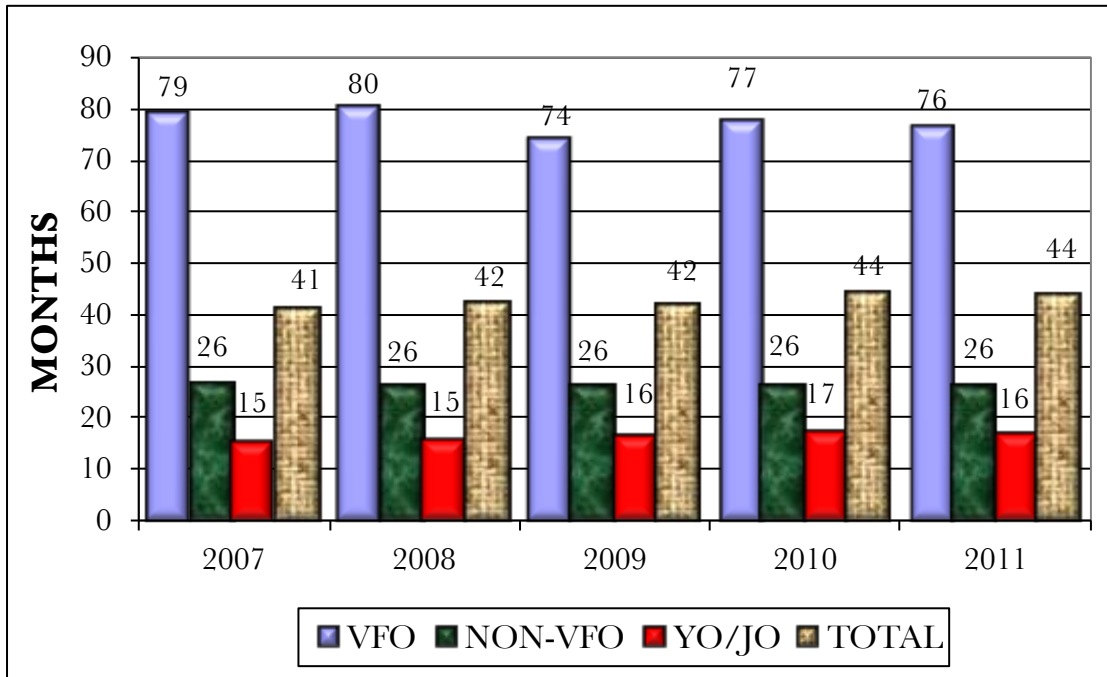


Figure 5.2
Minimum Sentence in Months
2011 New Court Commitments, N=14,496

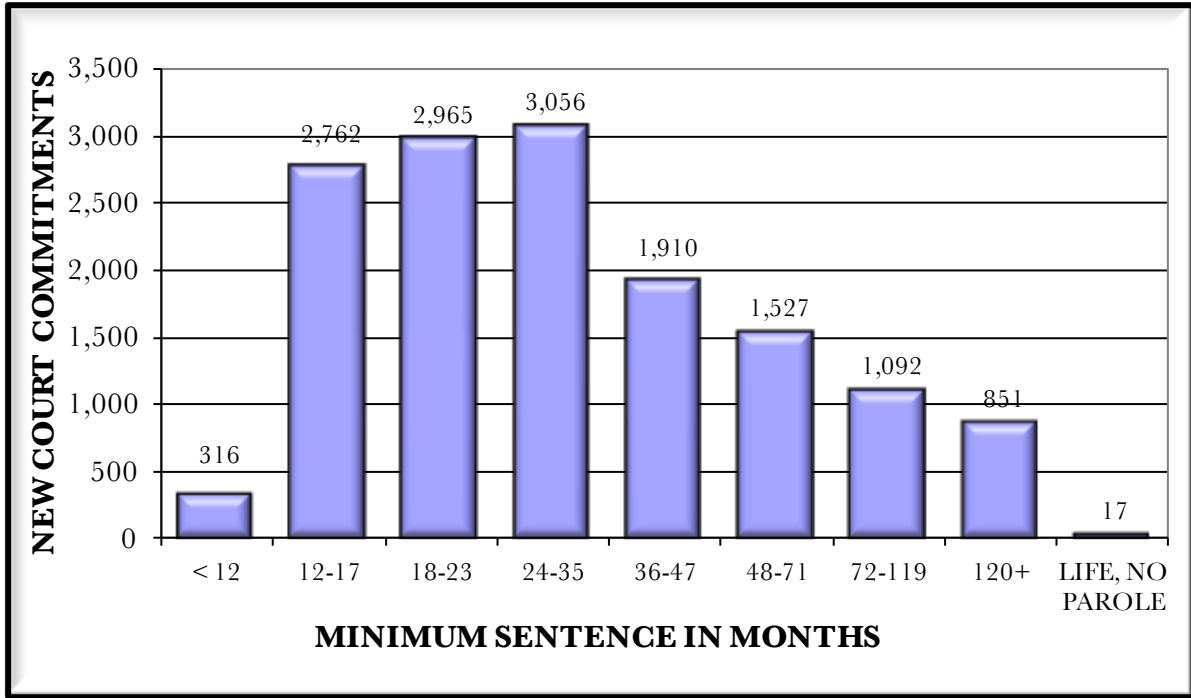


TABLE 5.1
MINIMUM SENTENCE BY CRIME TYPE; 2011 NEW COURT COMMITMENTS

MINIMUM SENTENCE	VIOLENT FELONY OFFENSES	OTHER COERCIVE OFFENSES	DRUG OFFENSES	PROPERTY AND OTHER OFFENSES	YOUTHFUL & JUVENILE OFFENDERS	TOTAL	PERCENT
< 12 MONTHS	1	1	302	0	12	316	2.2%
12-17 MONTHS	8	385	492	1,373	504	2,762	19.1%
18-23 MONTHS	797	404	904	831	29	2,965	20.5%
24-35 MONTHS	630	471	894	1,024	37	3,056	21.1%
36-47 MONTHS	997	169	493	236	15	1,910	13.2%
48-71 MONTHS	1,111	56	278	80	2	1,527	10.5%
72-119 MONTHS	898	50	118	23	3	1,092	7.5%
120+ MONTHS	795	16	29	10	1	851	5.9%
LIFE, NO PAROLE	17	0	0	0	0	17	0.1%
TOTAL	5,254	1,552	3,510	3,577	603	14,496	100.0%

While the median minimum sentence was 26 months (see table 5.2), 14% of the new court commitments received in 2011 were required to serve 6 years or more before being eligible for release to parole supervision (see Table 5.1).

TABLE 5.2
AVERAGE AND MEDIAN MINIMUM SENTENCE (IN MONTHS) BY CRIME
AND BY FELONY OFFENDER STATUS; 2011 NEW COURT COMMITMENTS

COMMITMENT CRIME	FIRST FELONY OFFENDER			SECOND FELONY OFFENDER			PERSISTENT FELONY OFFENDER			TOTAL		
	NUMBER	AVERAGE	MEDIAN	NUMBER	AVERAGE	MEDIAN	NUMBER	AVERAGE	MEDIAN	NUMBER	AVERAGE	MEDIAN
VIOLENT FELONY												
MURDER	149	392.4	300.0	0	0.0	0.0	0	0.0	0.0	149	392.4	300.0
ATTEMPTED MURDER	88	111.6	84.5	23	147.4	133.0	0	0.0	0.0	111	119.0	103.0
MANSLT 1ST,AG 2ND	140	185.1	185.0	36	183.4	195.0	0	0.0	0.0	176	184.7	185.0
RAPE 1ST	106	117.0	93.0	27	169.9	103.0	1	240.0	240.0	134	128.6	103.0
ROBBERY 1ST	341	69.4	51.0	165	117.3	102.0	13	277.8	264.0	519	89.9	72.0
ROBBERY 2ND	509	37.0	36.0	227	54.5	51.0	18	192.0	168.0	754	45.9	36.0
ASSAULT 1ST	230	74.0	51.0	70	103.8	82.0	6	230.0	216.0	306	83.8	62.0
ASSAULT 2ND	315	30.9	26.0	166	46.5	41.0	0	0.0	0.0	481	36.2	31.0
BURGLARY 1ST	83	83.6	72.0	47	148.0	123.0	5	409.2	270.0	135	118.1	87.0
BURGLARY 2ND	502	39.4	36.0	352	62.2	51.0	23	193.0	192.0	877	52.5	41.0
ARSON 1ST,2ND	26	94.0	51.0	14	87.8	77.0	0	0.0	0.0	40	91.8	64.5
SODOMY 1ST	79	102.4	82.0	10	157.2	154.0	0	0.0	0.0	89	108.6	82.0
SEX.AB-1ST,Ag.2	206	61.1	41.0	30	82.1	51.0	1	144.0	144.0	237	64.1	41.0
WEAPONS OFFENSES	680	35.8	36.0	340	61.1	51.0	8	189.8	204.0	1,028	45.4	36.0
KIDNAPPING 1ST,2ND	22	118.1	82.0	9	126.4	103.0	2	252.0	252.0	33	128.5	102.0
OTHER VFO SEX OFFENSES	133	73.2	36.0	20	101.1	51.0	0	0.0	0.0	153	76.9	41.0
OTHER VIOLENT FELONIES	23	52.9	31.0	9	71.8	51.0	0	0.0	0.0	32	58.2	33.5
SUBTOTAL	3,632	72.6	41.0	1,545	77.7	61.0	77	225.2	192.0	5,254	76.3	51.0
OTHER COERCIVE												
MANSLAUGHTER 2ND	35	37.7	36.0	7	59.1	60.0	0	0.0	0.0	42	41.3	36.0
OTHER HOMICIDE	42	33.5	24.0	6	43.2	36.0	0	0.0	0.0	48	34.7	24.0
ROBBERY 3RD	181	17.9	12.0	255	29.8	24.0	0	0.0	0.0	436	24.8	24.0
ATT ASSAULT 2ND	57	14.9	12.0	177	20.6	18.0	0	0.0	0.0	234	19.3	18.0
CONSPIRACY 2,3,4	51	41.3	24.0	55	56.1	30.0	1	24.0	24.0	107	48.8	30.0
OTHER WEAPONS	58	16.6	12.0	220	25.2	24.0	1	180.0	180.0	279	24.0	24.0
OTHER SEX OFFENSES	191	25.4	21.0	54	30.9	25.5	0	0.0	0.0	245	26.6	21.0
OTHER COERCIVE	102	22.2	16.0	58	26.4	24.0	1	240.0	240.0	161	25.0	20.0
SUBTOTAL	717	23.7	16.0	832	28.5	24.0	3	148.0	180.0	1,552	26.5	21.0
DRUG OFFENSES												
DRUG SALE	801	25.1	21.0	1,189	34.2	30.0	0	0.0	0.0	1,990	30.6	26.0
DRUG POSSESSION	695	25.5	21.0	825	32.8	26.0	0	0.0	0.0	1,520	29.4	25.5
SUBTOTAL	1,496	25.3	21.0	2,014	33.6	26.0	0	0.0	0.0	3,510	30.1	26.0
PROPERTY AND OTHER												
BURGLARY 3RD	375	19.6	16.0	601	27.8	24.0	0	0.0	0.0	976	24.6	24.0
GRAND LARCENY	309	20.1	16.0	458	23.4	18.0	1	180.0	180.0	768	22.3	18.0
FORGERY	97	17.2	16.0	177	27.0	24.0	0	0.0	0.0	274	23.5	24.0
STOLEN PROPERTY	56	16.9	12.0	127	21.9	18.0	0	0.0	0.0	183	20.3	18.0
DRIVE INTOXICATED	627	14.2	12.0	2	24.0	24.0	1	180.0	180.0	630	14.5	12.0
CONTEMPT 1ST	96	15.0	14.0	124	20.3	18.0	0	0.0	0.0	220	18.0	18.0
ALL OTHER FELONIES	303	17.1	12.0	223	28.0	24.0	0	0.0	0.0	526	21.7	18.0
SUBTOTAL	1,863	17.0	12.0	1,712	25.6	24.0	2	180.0	180.0	3,577	21.2	18.0
YOUTHFUL OFFENDER												
YOUTHFUL OFFENDER	580	15.1	12.0	0	0.0	0.0	0	0.0	0.0	580	15.1	12.0
JUVENILE OFFENDER												
JUVENILE OFFENDER	23	48.6	36.0	0	0.0	0.0	0	0.0	0.0	23	48.6	36.0
GRAND TOTAL	8,311	43.3	22.0	6,103	41.8	30.0	82	221.3	192.0	14,496	43.7	26.0

Note: Life without parole sentences treated as 45 years (540 months) for this table.

TABLE 5.3
CRIME BY AVERAGE MINIMUM SENTENCE BY FELONY OFFENDER STATUS: 2007 - 2011 NEW COURT COMMITMENTS

	2007			2008			2009			2010			2011			2007-2011 TOTAL		
	FIRST FELONY	2ND/ PERSIST. FELONY	TOTAL	FIRST FELONY	2ND/ PERSIST. FELONY	TOTAL	FIRST FELONY	2ND/ PERSIST. FELONY	TOTAL	FIRST FELONY	2ND/ PERSIST. FELONY	TOTAL	FIRST FELONY	2ND/ PERSIST. FELONY	TOTAL	FIRST FELONY	2ND/ PERSIST. FELONY	TOTAL
	AVERAGE	AVERAGE	AVERAGE	AVERAGE	AVERAGE	AVERAGE	AVERAGE	AVERAGE	AVERAGE	AVERAGE	AVERAGE	AVERAGE	AVERAGE	AVERAGE	AVERAGE	AVERAGE	AVERAGE	AVERAGE
VIOLENT FELONY																		
MURDER	326.7	0.0	326.7	348.3	0.0	348.3	327.5	0.0	327.5	327.4	0.0	327.4	332.9	0.0	332.9	392.4	0.0	392.4
ATTEMPTED MURDER	121.9	177.2	136.6	196.4	183.8	194.0	130.9	164.2	139.6	145.3	144.0	145.0	148.5	166.8	152.8	111.6	147.4	119.0
MANSLAUGHTER 1ST	152.7	171.4	156.0	163.9	181.9	169.1	161.9	180.4	165.5	172.4	183.8	174.5	162.4	179.6	166.1	185.1	183.4	184.7
RAPE 1ST	110.6	230.2	134.6	105.5	161.0	116.6	110.4	134.6	115.3	95.7	186.1	119.5	106.1	184.8	122.9	117.0	172.4	128.6
ROBBERY 1ST	74.1	136.5	95.8	71.4	126.1	89.8	65.1	111.0	80.6	70.3	124.1	88.6	70.3	124.8	88.9	69.4	129.1	89.9
ROBBERY 2ND	34.6	65.3	44.5	33.9	70.3	45.6	34.7	63.2	42.9	35.8	65.7	45.6	34.7	66.0	44.6	37.0	64.6	45.9
ASSAULT 1ST	76.1	122.0	89.8	79.1	118.0	89.3	76.7	114.2	86.1	78.1	107.7	85.9	77.5	115.4	87.6	74.0	113.8	83.8
ASSAULT 2ND	32.2	52.4	39.0	30.1	48.3	35.3	30.8	49.6	36.9	32.8	50.1	38.0	31.5	50.1	37.3	30.9	46.5	36.2
BURGLARY 1ST	101.1	145.4	118.7	80.2	138.0	99.3	91.3	123.2	101.3	92.6	142.2	112.4	90.8	137.7	107.7	83.6	173.1	118.1
BURGLARY 2ND	38.8	75.4	56.3	40.2	67.8	53.1	38.4	76.1	54.7	38.6	78.1	56.1	38.9	74.4	55.0	39.4	70.2	52.5
ARSON 1ST,2ND	79.4	89.8	81.1	69.8	132.3	91.5	71.7	87.9	76.1	128.9	95.6	123.8	91.1	104.4	94.2	94.0	87.8	91.8
SODOMY 1ST	122.6	146.3	127.3	102.3	183.2	112.8	117.7	187.4	127.3	105.5	168.5	120.9	111.9	168.0	121.9	102.4	157.2	108.6
SEX.AB-1ST,Ag.2	61.7	93.1	66.7	55.3	66.9	56.6	62.8	93.5	67.0	69.4	57.9	67.5	62.1	78.5	64.4	61.1	84.1	64.1
WEAPONS OFFENSES	35.0	53.1	41.7	36.8	60.1	44.2	34.5	61.7	43.4	36.8	62.9	45.0	35.8	59.4	43.6	35.8	64.1	45.4
KIDNAPPING 1ST,2ND	158.8	115.0	148.4	89.6	93.0	89.9	121.9	171.3	128.6	117.7	177.9	136.5	123.0	155.8	130.0	118.1	149.3	128.5
OTHER VFO SEX OFFENSES	103.0	0.0	103.0	175.0	642.2	264.8	140.4	290.0	175.4	137.8	277.6	170.7	146.9	347.6	192.2	73.2	101.1	76.9
OTHER VIOLENT FELONIES	21.7	22.0	21.8	27.9	41.6	31.3	32.0	41.0	32.5	39.3	29.3	36.5	31.9	32.1	31.9	52.9	71.8	58.2
SUBTOTAL	75.0	87.8	79.1	76.8	87.8	80.1	69.6	83.5	73.7	72.7	87.5	77.2	73.4	86.7	77.5	72.6	84.7	76.3
NON VIOLENT FELONY																		
MANSLAUGHTER 2ND	42.9	64.7	46.4	43.9	75.0	49.5	38.2	66.0	39.6	38.0	67.5	43.3	40.9	68.7	45.0	37.7	59.1	41.3
OTHER HOMICIDE	19.2	21.0	19.3	25.6	41.0	27.8	26.8	31.2	27.6	29.5	75.0	35.3	26.3	46.2	29.0	33.5	43.2	34.7
ROBBERY 3RD	18.0	30.4	25.0	17.3	28.1	23.8	18.3	28.8	24.8	18.2	29.5	25.3	17.9	29.2	24.7	17.9	29.8	24.8
ATT ASSAULT 2ND	16.3	20.3	19.1	15.1	20.2	18.5	13.8	21.2	19.1	14.0	20.9	18.9	14.7	20.7	18.9	14.9	20.6	19.3
CONSPIRACY 2,3,4	31.3	33.9	32.4	26.7	37.9	30.9	26.7	41.8	34.1	30.3	42.9	35.2	28.8	38.5	32.9	41.3	55.5	48.8
OTHER WEAPONS	19.5	26.9	25.0	19.9	25.8	24.4	18.3	26.3	24.6	16.6	24.6	22.8	18.8	25.9	24.2	16.6	25.9	24.0
OTHER SEX OFFENSES	23.7	31.3	25.6	24.7	29.9	26.1	26.5	31.1	27.3	27.3	38.0	29.9	26.1	32.5	27.5	25.4	30.9	26.6
OTHER COERCIVE	18.8	28.2	22.7	19.2	29.0	23.4	20.7	29.0	24.5	18.5	32.3	24.3	19.3	29.5	23.7	22.2	30.0	25.0
DRUG SALE	23.6	33.7	29.5	23.3	33.8	29.3	25.3	33.1	30.0	26.8	32.8	30.5	24.5	33.4	29.7	25.1	34.2	30.6
DRUG POSSESSION	23.9	32.5	28.6	23.8	32.1	28.5	26.9	32.6	30.2	25.3	32.5	29.3	24.8	32.4	29.0	25.5	32.8	29.4
BURGLARY 3RD	18.9	28.1	24.7	18.1	27.6	24.0	18.2	27.7	23.9	18.1	29.3	24.8	18.4	28.1	24.3	19.6	27.8	24.6
GRAND LARCENY	19.2	25.4	22.7	20.5	24.2	22.7	19.9	24.2	22.4	19.7	26.3	23.5	19.8	25.0	22.8	20.1	23.7	22.3
FORGERY	17.2	25.6	22.4	18.4	25.6	22.9	18.7	28.6	25.0	18.4	24.3	22.1	18.1	26.1	23.0	17.2	27.0	23.5
STOLEN PROPERTY	15.9	21.6	20.0	15.2	21.8	20.1	16.0	22.8	21.1	15.4	21.3	19.5	15.7	21.9	20.2	16.9	21.9	20.3
DRIVE INTOXICATED	14.7	43.9	15.1	14.7	20.4	14.8	14.4	59.0	14.7	14.4	20.0	14.5	14.5	31.7	14.8	14.2	76.0	14.5
CONTEMPT 1ST	14.2	20.7	17.8	14.9	20.6	18.1	14.0	19.5	16.9	13.5	20.0	17.4	14.1	20.2	17.6	15.0	20.3	18.0
ALL OTHER FELONIES	17.6	27.2	22.1	18.9	23.8	21.2	17.1	23.4	20.1	17.7	24.0	20.4	17.8	24.6	20.9	17.1	28.0	21.7
SUBTOTAL	21.2	30.4	26.2	21.1	29.6	25.7	21.8	29.5	25.9	21.4	29.7	25.8	21.4	29.8	25.9	21.2	29.8	25.8
YO/JO																		
YOUTHFUL OFFENDER	14.4	0.0	14.4	14.4	0.0	14.4	14.5	0.0	14.5	14.4	0.0	14.4	14.4	0.0	14.4	15.1	0.0	15.1
JUVENILE OFFENDER	33.4	0.0	33.4	52.9	0.0	52.9	56.4	0.0	56.4	52.6	0.0	52.6	49.5	0.0	49.5	48.6	0.0	48.6
SUBTOTAL	14.9	0.0	14.9	15.2	0.0	15.2	15.9	0.0	15.9	16.8	0.0	16.8	15.7	0.0	15.7	16.3	0.0	16.3
GRAND TOTAL	40.3	42.3	41.2	42.2	41.8	42.0	41.7	42.2	41.9	43.5	44.7	44.0	41.9	42.7	42.2	43.3	44.2	43.7

Note: Life without parole sentences treated as 45 years (540 months) for this table.

**TABLE 5.4
CRIME CLASS BY MINIMUM SENTENCE BY FELONY OFFENDER STATUS
2007-2011 NEW COURT COMMITMENTS**

	2007			2008			2009			2010			2011		
	NUMBER	AVERAGE	MEDIAN	NUMBER	AVERAGE	MEDIAN	NUMBER	AVERAGE	MEDIAN	NUMBER	AVERAGE	MEDIAN	NUMBER	AVERAGE	MEDIAN
FIRST FELONY															
VIOLENT FELONY															
A-I FELONY	190	328.3	300.0	198	372.2	300.0	171	327.8	300.0	186	339.1	300.0	157	388.4	300.0
A-II FELONY	0	0	0	12	279.2	180.0	15	278.7	240.0	16	277.7	210.0	20	246.8	228.0
CLASS B FELONY	897	116.8	102.0	853	113.3	93.0	910	111.1	82.0	941	111.2	82.0	880	113.4	87.0
CLASS C FELONY	971	51.4	41.0	976	49.7	41.0	1,077	49.2	36.0	1,086	49.5	41.0	1,138	49.1	41.0
CLASS D FELONY	1,330	29.1	21.0	1,386	28.9	21.0	1,572	28.8	21.0	1,507	29.1	21.0	1,431	29.2	21.0
CLASS E FELONY	34	18.8	15.0	12	16.8	15.0	11	15.6	15.0	7	22.1	21.0	6	16.2	15.0
SUBTOTAL	3,422	74.9	41.0	3,437	76.3	41.0	3,756	69.1	36.0	3,743	72.1	41.0	3,632	72.6	41.0
NON VIOLENT FELONY															
A-I FELONY	28	142.6	98.0	11	105.5	82.0	38	110.5	93.0	20	95.9	84.5	20	94.8	82.0
A-II FELONY	240	46.1	41.0	195	44.8	36.0	197	43.8	41.0	189	42.5	36.0	176	38.8	35.0
CLASS B FELONY	1,412	22.9	21.0	1,283	23.0	21.0	992	24.6	21.0	906	25.9	21.0	912	26.0	21.0
CLASS C FELONY	667	23.1	21.0	592	25.5	21.0	491	25.2	21.0	416	25.4	21.0	377	26.8	24.0
CLASS D FELONY	1,711	18.6	15.0	1,474	18.5	15.0	1,350	18.1	15.0	1,304	18.1	16.0	1,326	18.7	16.0
CLASS E FELONY	1,240	14.6	12.0	1,171	14.8	12.0	1,239	14.9	12.0	1,221	15.3	12.0	1,265	15.1	12.0
SUBTOTAL	5,298	21.2	16.0	4,726	21.0	16.0	4,307	21.5	16.0	4,056	21.3	16.0	4,076	21.2	16.0
YO/JO															
A-I FELONY	0	0	0	2	156.0	156.0	5	135.6	126.0	7	132.9	108.0	5	104.4	108.0
CLASS B FELONY	15	31.9	36.0	11	36.4	40.0	12	33.3	32.0	28	36.9	34.0	18	33.1	36.0
CLASS C FELONY	4	39.0	38.0	1	28.0	28.0	3	16.7	16.0	4	29.8	26.0	0	0	0
CLASS D FELONY	0	0	0	0	0	0	0	0	0	1	20.0	20.0	0	0	0
YOUTHFUL OFFENDER	682	14.4	12.0	617	14.4	12.0	603	14.5	12.0	594	14.4	12.0	580	15.1	12.0
SUBTOTAL	701	14.9	12.0	631	15.2	12.0	623	15.9	12.0	634	16.8	12.0	603	16.3	15.0
2ND & PERSIST FELONY															
VIOLENT FELONY															
A-II FELONY	0	0	0	4	795.0	420.0	10	311.8	282.0	9	351.8	300.0	4	303.0	234.0
CLASS B FELONY	316	182.0	154.0	300	164.8	146.5	276	157.4	134.0	320	160.1	134.0	303	166.4	133.0
CLASS C FELONY	569	85.2	72.0	543	86.1	72.0	616	83.8	72.0	640	88.1	72.0	590	85.8	72.0
CLASS D FELONY	662	51.7	51.0	601	48.4	41.0	649	48.9	41.0	678	49.8	46.0	715	48.6	46.0
CLASS E FELONY	73	28.1	31.0	27	28.1	26.0	12	37.8	33.5	17	29.3	31.0	10	31.6	31.0
SUBTOTAL	1,620	87.8	62.0	1,475	87.6	62.0	1,563	83.4	62.0	1,664	87.2	62.0	1,622	84.7	62.0
A-I FELONY	5	125.0	123.0	12	160.9	154.0	18	163.8	123.0	15	170.5	144.0	7	220.3	165.0
A-II FELONY	83	82.6	82.0	58	82.2	78.0	46	78.5	77.0	53	74.8	62.0	41	75.1	72.0
CLASS B FELONY	883	49.1	41.0	755	49.0	41.0	878	41.4	36.0	963	37.1	31.0	955	40.3	31.0
CLASS C FELONY	1,338	31.8	31.0	1,066	32.2	31.0	776	31.9	31.0	613	31.9	31.0	554	33.5	36.0
CLASS D FELONY	2,181	27.8	24.0	2,010	26.8	24.0	1,776	28.3	24.0	1,490	30.0	25.0	1,472	29.3	24.0
CLASS E FELONY	1,717	20.1	18.0	1,641	19.6	18.0	1,579	20.1	18.0	1,523	20.3	18.0	1,534	20.4	18.0
SUBTOTAL	6,207	30.4	24.0	5,542	29.6	24.0	5,073	29.5	24.0	4,657	29.5	24.0	4,563	29.8	24.0
GRAND TOTAL	17,248	41.2	24.0	15,811	42.0	24.0	15,322	41.9	25.0	14,754	44.0	26.0	14,496	43.7	26.0

Note: Life without parole sentences are treated as 45 years (540) months for this table.

**TABLE 5.5
AVERAGE AND MEDIAN MAXIMUM SENTENCE (IN MONTHS) BY CRIME AND FELONY OFFENDER STATUS: 2011 NEW COURT COMMITMENTS**

	FIRST FELONY OFFENDER			SECOND FELONY OFFENDER			PERSISTENT FELONY OFFENDER			Total		
	NUMBER	AVERAGE	MEDIAN	NUMBER	AVERAGE	MEDIAN	NUMBER	AVERAGE	MEDIAN	NUMBER	AVERAGE	MEDIAN
VIOLENT FELONY												
MURDER	149	327.4	300.0	0	0.0	0.0	0	0.0	0.0	149	327.4	300.0
ATTEMPTED MURDER	88	127.5	99.0	23	174.8	156.0	0	0.0	0.0	111	137.3	120.0
MANSLAUGHTER 1ST	140	218.0	216.0	36	216.8	234.0	0	0.0	0.0	176	217.7	216.0
RAPE 1ST	106	136.9	108.0	27	198.0	120.0	1	300.0	300.0	134	150.4	120.0
ROBBERY 1ST	341	81.6	60.0	165	137.0	120.0	13	300.0	300.0	519	104.7	84.0
ROBBERY 2ND	509	43.0	42.0	227	63.7	60.0	18	300.0	300.0	754	55.4	42.0
ASSAULT 1ST	230	86.7	60.0	70	121.2	96.0	6	300.0	300.0	306	98.8	75.0
ASSAULT 2ND	315	35.8	30.0	166	54.4	48.0	0	0.0	0.0	481	42.2	36.0
BURGLARY 1ST	83	97.7	84.0	47	172.7	144.0	5	300.0	300.0	135	131.3	102.0
BURGLARY 2ND	502	45.9	42.0	352	72.8	60.0	23	300.0	300.0	877	63.4	48.0
ARSON 1ST,2ND	26	86.8	60.0	14	102.4	90.0	0	0.0	0.0	40	92.3	75.0
SODOMY 1ST	79	120.3	96.0	10	183.6	180.0	0	0.0	0.0	89	127.4	102.0
SEX AB - 1ST, AG 2	206	71.9	48.0	30	96.0	60.0	1	300.0	300.0	237	75.9	48.0
WEAPONS OFFENSES	680	41.6	42.0	340	71.6	60.0	8	300.0	300.0	1,028	53.6	42.0
KIDNAPPING 1ST, 2ND	22	142.9	96.0	9	148.0	120.0	2	300.0	300.0	33	153.8	120.0
OTHER VFO SEX OFFENSES	133	87.2	42.0	20	107.4	60.0	0	0.0	0.0	153	89.9	48.0
OTHER VIOLENT FELONIES	23	70.2	36.0	9	84.0	60.0	0	0.0	0.0	32	74.1	39.0
SUBTOTAL	3,632	79.4	48.0	1,545	90.8	72.0	77	300.0	300.0	5,254	86.0	60.0
OTHER COERCIVE												
MANSLAUGHTER 2ND	35	112.1	108.0	7	118.3	120.0	0	0.0	0.0	42	113.1	108.0
OTHER HOMICIDE	42	99.7	72.0	6	89.0	72.0	0	0.0	0.0	48	98.4	72.0
ROBBERY 3RD	181	50.6	36.0	255	59.5	48.0	0	0.0	0.0	436	55.8	48.0
ATT ASSAULT 2ND	57	40.5	36.0	177	41.1	36.0	0	0.0	0.0	234	41.0	36.0
CONSPIRACY 2,3,4	51	94.6	72.0	55	98.2	48.0	1	48.0	48.0	107	96.0	60.0
OTHER WEAPONS	58	46.6	36.0	220	49.8	48.0	1	300.0	300.0	279	50.0	48.0
OTHER SEX OFFENSES	191	44.6	36.0	54	44.0	36.0	0	0.0	0.0	245	44.5	36.0
OTHER COERCIVE	102	58.2	48.0	58	51.5	48.0	1	300.0	300.0	161	57.3	48.0
SUBTOTAL	717	58.0	36.0	832	54.7	48.0	3	216.0	300.0	1,552	56.5	48.0
DRUG OFFENSES												
DRUG SALE	801	29.5	24.0	1,189	40.0	36.0	0	0.0	0.0	1,990	35.8	30.0
DRUG POSSESSION	695	31.0	24.0	825	38.3	30.0	0	0.0	0.0	1,520	35.0	30.0
SUBTOTAL	1,496	30.2	24.0	2,014	39.3	30.0	0	0.0	0.0	3,510	35.4	30.0
PROPERTY AND OTHER												
BURGLARY 3RD	375	57.2	48.0	601	55.4	48.0	0	0.0	0.0	976	56.1	48.0
GRAND LARCENY	309	56.9	36.0	458	46.5	36.0	1	300.0	300.0	768	51.1	36.0
FORGERY	97	48.7	48.0	177	53.4	48.0	0	0.0	0.0	274	51.7	48.0
STOLEN PROPERTY	56	48.6	36.0	127	43.9	36.0	0	0.0	0.0	183	45.3	36.0
DRIVE INTOXICATED	627	42.5	36.0	2	72.0	72.0	1	300.0	300.0	630	43.0	36.0
CONTEMPT 1ST	96	43.5	36.0	124	40.6	36.0	0	0.0	0.0	220	41.9	36.0
ALL OTHER FELONIES	303	48.3	36.0	223	53.0	42.0	0	0.0	0.0	526	50.3	36.0
SUBTOTAL	1,863	49.4	36.0	1,712	50.6	48.0	2	300.0	300.0	3,577	50.1	42.0
YOUTHFUL OFFENDER												
YOUTHFUL OFFENDER	580	41.5	36.0	0	0.0	0.0	0	0.0	0.0	580	41.5	36.0
JUVENILE OFFENDER												
JUVENILE OFFENDER	23	142.2	108.0	0	0.0	0.0	0	0.0	0.0	23	142.2	108.0
GRAND TOTAL	8,311	59.5	36.0	6,103	57.6	48.0	82	296.9	300.0	14,496	60.0	42.0

Notes: Life maximum sentences are treated as 25 years (300 months) for this table.
Life without parole sentences are treated as 45 years (540 months) for this table.

Section 6: Prior Adult Criminal Record

Almost 58% of new court commitments in 2011 had served a prior period of time in jail (29%) or prison (28%).

Figure 6
Prior Criminal Record
2011 New Court Commitments, N=14,496

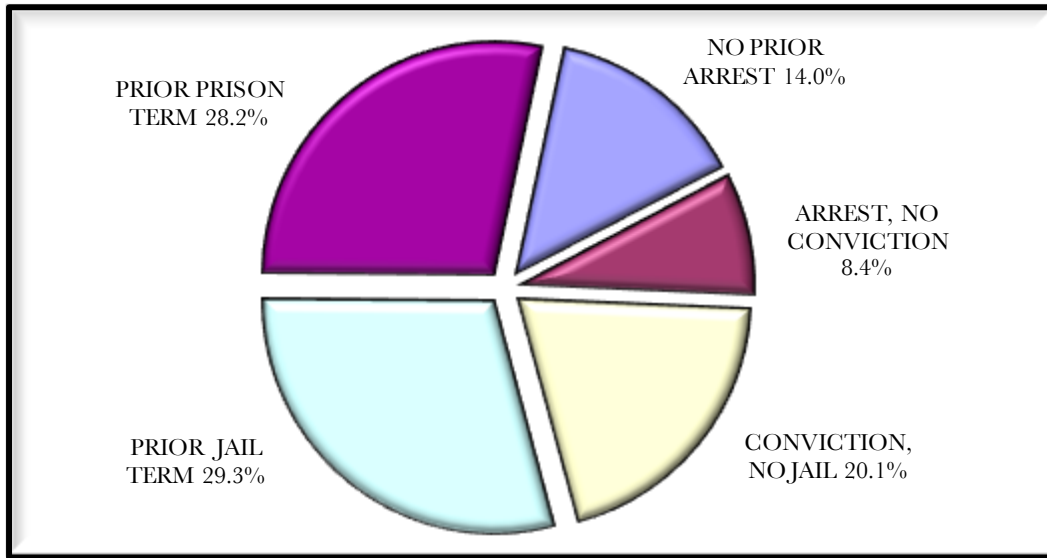


TABLE 6.1
OFFENSE TYPE BY PRIOR ADULT CRIMINAL RECORD; 2011 NEW COURT COMMITMENTS

COMMITMENT OFFENSE	PRIOR ADULT RECORD					TOTAL
	NO PRIOR ARREST	ARREST, NO FEL. CONV.	CONVICTION NO JAIL	PRIOR JAIL TERM	PRIOR PRISON TERM	
VIOLENT FELONY	1,088	561	992	1,470	1,143	5,254
OTHER COERCIVE	183	114	302	450	503	1,552
DRUG OFFENSES	321	188	693	1,053	1,255	3,510
PROPERTY AND OTHER	217	181	832	1,163	1,184	3,577
YO & JO	221	167	99	113	3	603
TOTAL	2,030	1,211	2,918	4,249	4,088	14,496
PERCENT	14.0%	8.4%	20.1%	29.3%	28.2%	100.0%

Section 7: Drug Commitments

The majority (57%) of new court commitments admitted in 2011 for a drug offense were committed for drug sale (see Table 7.1).

The total number of drug commitments declined by 2,638 (6,148 to 3,510) or 43% between 2007 and 2011 (see Table 7.2). The Drug Law Reform Act that was enacted in 2009 contributed to this decrease. Specifically, this legislation provides judges with sentencing discretion for certain drug offenders with substance abuse problems. This has diverted some drug offenders from prison to drug treatment programs in the community.¹³

Determinate sentencing for drug offenders began in 2005 following the drug law reforms enacted in 2004 (see Section 16 of this report). Determinate sentencing laws for drug offenders resulted in a drop in average maximum sentences among drug offenders from 37 months in 2007 to 35 months in 2011, while the minimum sentences remained fairly stable over the same period (see Table 7.4).

TABLE 7.1
FELONY CRIME CLASS BY DRUG SALE OR POSSESSION;
2011 NEW COURT COMMITMENTS

FELONY CLASS	DRUG SALE	DRUG POSSESSION	TOTAL
A-I FELONY	11	16	27
A-II FELONY	115	102	217
CLASS B FELONY	1,124	611	1,735
CLASS C FELONY	382	346	728
CLASS D FELONY	306	344	650
CLASS E FELONY	52	101	153
TOTAL	1,990	1,520	3,510
PERCENT	56.7%	43.3%	100.0%

TABLE 7.2
DRUG CRIME CONVICTIONS BY CRIME CLASS AND YEAR RECEIVED; 2007 - 2011 NEW COURT COMMITMENTS

CRIME CLASS	2007		2008		2009		2010		2011		TOTAL	
	NUMBER	PERCENT	NUMBER	PERCENT	NUMBER	PERCENT	NUMBER	PERCENT	NUMBER	PERCENT	NUMBER	PERCENT
A-I FELONY	33	0.5%	23	0.4%	56	1.3%	35	0.9%	27	0.8%	174	0.8%
A-II FELONY	317	5.2%	253	4.9%	243	5.6%	242	6.4%	217	6.2%	1,272	5.5%
CLASS B FELONY	2,210	35.9%	1,941	37.4%	1,798	41.6%	1,777	47.3%	1,735	49.4%	9,461	41.3%
CLASS C FELONY	1,803	29.3%	1,433	27.6%	1,033	23.9%	801	21.3%	728	20.7%	5,798	25.3%
CLASS D FELONY	1,520	24.7%	1,323	25.5%	987	22.8%	735	19.6%	650	18.5%	5,215	22.7%
CLASS E FELONY	265	4.3%	217	4.2%	207	4.8%	166	4.4%	153	4.4%	1,008	4.4%
GRAND TOTAL	6,148	100.0%	5,190	100.0%	4,324	100.0%	3,756	100.0%	3,510	100.0%	22,928	100.0%

¹³ The Drug Law Reform Act of 2009 removed mandatory sentencing for Class B, first felony drug offenders as well as Class C, D, and E second felony drug offenders with no history of violent convictions.

**TABLE 7.3
DRUG CRIME CONVICTIONS BY CRIME CLASS, FELONY OFFENDER STATUS, AND YEAR RECEIVED: 2007-2011 NEW COURT COMMITMENTS**

	2007		2008		2009		2010		2011		TOTAL	
	NUMBER	PERCENT	NUMBER	PERCENT	NUMBER	PERCENT	NUMBER	PERCENT	NUMBER	PERCENT	NUMBER	PERCENT
FIRST FELONY OFFENDER												
A-I FELONY	28	0.5%	11	0.2%	38	0.9%	20	0.5%	20	0.6%	117	0.5%
A-II FELONY	235	3.8%	195	3.8%	197	4.6%	189	5.0%	176	5.0%	992	4.3%
CLASS B FELONY	1,341	21.8%	1,198	23.1%	930	21.5%	826	22.0%	813	23.2%	5,108	22.3%
CLASS C FELONY	506	8.2%	421	8.1%	300	6.9%	238	6.3%	225	6.4%	1,690	7.4%
CLASS D FELONY	489	8.0%	378	7.3%	277	6.4%	228	6.1%	229	6.5%	1,601	7.0%
CLASS E FELONY	55	0.9%	37	0.7%	45	1.0%	39	1.0%	33	0.9%	209	0.9%
SUBTOTAL	2,654	43.2%	2,240	43.2%	1,787	41.3%	1,540	41.0%	1,496	42.6%	9,717	42.4%
SECOND AND PERSISTENT FELONY												
A-I FELONY	5	0.1%	12	0.2%	18	0.4%	15	0.4%	7	0.2%	57	0.2%
A-II FELONY	82	1.3%	58	1.1%	46	1.1%	53	1.4%	41	1.2%	280	1.2%
CLASS B FELONY	870	14.2%	743	14.3%	868	20.1%	951	25.3%	922	26.3%	4,354	19.0%
CLASS C FELONY	1,297	21.1%	1,012	19.5%	733	17.0%	563	15.0%	503	14.3%	4,108	17.9%
CLASS D FELONY	1,029	16.7%	945	18.2%	710	16.4%	507	13.5%	421	12.0%	3,612	15.8%
CLASS E FELONY	210	3.4%	180	3.5%	162	3.7%	127	3.4%	120	3.4%	799	3.5%
SUBTOTAL	3,493	56.8%	2,950	56.8%	2,537	58.7%	2,216	59.0%	2,014	57.4%	13,210	57.6%
GRAND TOTAL	6,147	100.0%	5,190	100.0%	4,324	100.0%	3,756	100.0%	3,510	100.0%	22,927	100.0%

**TABLE 7.4
DRUG CRIME CONVICTIONS AND SENTENCES (IN MONTHS) BY CRIME CLASS AND YEAR RECEIVED: 2007-2011 NEW COURT COMMITMENTS**

	2007			2008			2009			2010			2011		
	NUMBER	AVE MIN	AVE MAX	NUMBER	AVE MIN	AVE MAX	NUMBER	AVE MIN	AVE MAX	NUMBER	AVE MIN	AVE MAX	NUMBER	AVE MIN	AVE MAX
FIRST FELONY OFFENDER															
A-I FELONY	28	142.6	162.0	11	105.5	132.0	38	110.5	128.8	20	95.9	112.2	20	94.8	115.2
A-II FELONY	235	42.0	61.8	195	44.8	60.4	197	43.8	56.2	189	42.5	50.7	176	38.8	48.0
CLASS B FELONY	1,341	22.1	29.5	1,198	22.2	28.0	930	24.1	28.9	826	24.7	29.4	813	23.9	28.0
CLASS C FELONY	506	20.9	29.3	421	22.4	28.6	300	21.4	27.1	238	22.2	27.3	225	23.8	28.7
CLASS D FELONY	489	16.5	23.2	378	16.9	22.3	277	15.8	19.8	228	17.2	21.0	229	16.9	20.3
CLASS E FELONY	55	14.1	21.1	37	12.8	18.6	45	13.8	19.6	39	14.2	20.3	33	12.6	15.7
SUBTOTAL	2,654	23.7	32.4	2,240	23.6	30.4	1,787	26.1	32.1	1,540	26.1	31.3	1,496	25.3	30.2
SECOND AND PERSISTENT FELONY															
A-I FELONY	5	125.0	146.4	12	160.9	188.0	18	163.8	191.1	15	170.5	199.2	7	220.3	257.1
A-II FELONY	82	80.7	101.4	58	82.2	100.8	46	78.5	101.1	53	74.8	87.3	41	75.1	87.7
CLASS B FELONY	870	48.6	60.4	743	48.5	58.3	868	40.9	48.3	951	36.3	42.6	922	37.7	44.0
CLASS C FELONY	1,297	30.8	38.4	1,012	31.1	37.6	733	30.8	36.8	563	29.7	35.0	503	32.1	37.8
CLASS D FELONY	1,029	21.7	27.2	945	21.1	25.7	710	22.0	26.4	507	23.8	27.9	421	23.3	27.4
CLASS E FELONY	210	18.9	23.4	180	18.3	22.0	162	19.3	22.8	127	20.0	23.1	120	19.7	23.1
SUBTOTAL	3,493	33.2	41.3	2,950	33.0	39.9	2,537	32.9	39.2	2,216	32.7	38.3	2,014	33.6	39.3
GRAND TOTAL	6,147	29.1	37.5	5,190	28.9	35.8	4,324	30.1	36.3	3,756	30.0	35.4	3,510	30.1	35.4

Notes: Life maximum sentences treated as 25 years (300 months) for this table.

Section 8: Gender

Males made up 93% of 2011 new court commitments and 95% of violent felony new commitments. The proportion of men who were violent felony offenders (37%) was significantly higher than the proportion of women who were violent felony offenders (23%) In contrast, women were more likely than men to be committed for property and other offenses (38% and 24%, respectively).

Figure 8
Commitment Crime by Gender
2011 New Court Commitments, N=14,496

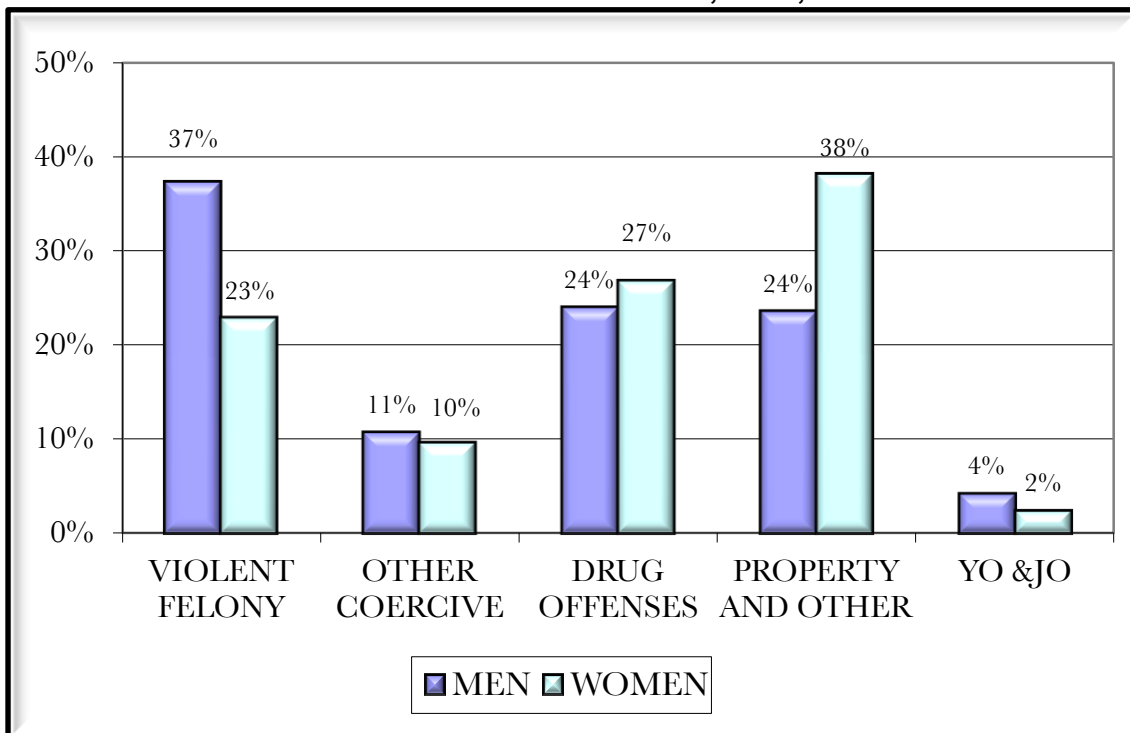


TABLE 8.1
CRIME BY GENDER; 2011 NEW COURT COMMITMENTS

	MEN	WOMEN	TOTAL
VIOLENT FELONY	5,013	241	5,254
OTHER COERCIVE	1,450	102	1,552
DRUG OFFENSES	3,228	282	3,510
PROPERTY AND OTHER	3,176	401	3,577
YO & JO	577	26	603
TOTAL	13,444	1,052	14,496
PERCENT	92.7%	7.3%	100.0%

TABLE 8.2
CRIME BY GENDER; 2011 NEW COURT COMMITMENTS

	MEN		WOMEN		TOTAL	
	NUMBER	PERCENT	NUMBER	PERCENT	NUMBER	PERCENT
VIOLENT FELONY						
MURDER	142	1.1%	7	0.7%	149	1.0%
ATTEMPTED MURDER	103	0.8%	8	0.8%	111	0.8%
MANSLT 1ST,AG 2ND	156	1.2%	20	1.9%	176	1.2%
RAPE 1ST	134	1.0%	0	0.0%	134	0.9%
ROBBERY 1ST	499	3.7%	20	1.9%	519	3.6%
ROBBERY 2ND	710	5.3%	44	4.2%	754	5.2%
ASSAULT 1ST	287	2.1%	19	1.8%	306	2.1%
ASSAULT 2ND	440	3.3%	41	3.9%	481	3.3%
BURGLARY 1ST	132	1.0%	3	0.3%	135	0.9%
BURGLARY 2ND	836	6.2%	41	3.9%	877	6.0%
ARSON 1ST,2ND	30	0.2%	10	1.0%	40	0.3%
SODOMY 1ST	88	0.7%	1	0.1%	89	0.6%
SEX.AB-1ST,Ag.2	236	1.8%	1	0.1%	237	1.6%
WEAPONS OFFENSES	1,007	7.5%	21	2.0%	1,028	7.1%
KIDNAPPING 1ST,2ND	31	0.2%	2	0.2%	33	0.2%
OTHER VFO SEX OFFENSES	150	1.1%	3	0.3%	153	1.1%
OTHER VIOLENT FELONIES	32	0.2%	0	0.0%	32	0.2%
SUBTOTAL	5,013	37.3%	241	22.9%	5,254	36.2%
OTHER COERCIVE						
MANSLAUGHTER 2ND	35	0.3%	7	0.7%	42	0.3%
OTHER HOMICIDE	35	0.3%	13	1.2%	48	0.3%
ROBBERY 3RD	417	3.1%	19	1.8%	436	3.0%
ATT ASSAULT 2ND	221	1.6%	13	1.2%	234	1.6%
CONSPIRACY 2,3,4	91	0.7%	16	1.5%	107	0.7%
OTHER WEAPONS	274	2.0%	5	0.5%	279	1.9%
OTHER SEX OFFENSES	240	1.8%	5	0.5%	245	1.7%
OTHER COERCIVE	137	1.0%	24	2.3%	161	1.1%
SUBTOTAL	1,450	10.8%	102	9.7%	1,552	10.7%
DRUG OFFENSES						
DRUG SALE	1,801	13.4%	189	18.0%	1,990	13.7%
DRUG POSSESSION	1,427	10.6%	93	8.8%	1,520	10.5%
SUBTOTAL	3,228	24.0%	282	26.8%	3,510	24.2%
PROPERTY AND OTHER						
BURGLARY 3RD	936	7.0%	40	3.8%	976	6.7%
GRAND LARCENY	621	4.6%	147	14.0%	768	5.3%
FORGERY	224	1.7%	50	4.8%	274	1.9%
STOLEN PROPERTY	168	1.2%	15	1.4%	183	1.3%
DRIVE INTOXICATED	554	4.1%	76	7.2%	630	4.3%
CONTEMPT 1ST	216	1.6%	4	0.4%	220	1.5%
ALL OTHER FELONIES	457	3.4%	69	6.6%	526	3.6%
SUBTOTAL	3,176	23.6%	401	38.1%	3,577	24.7%
YOUTHFUL OFFENDER						
YOUTHFUL OFFENDER	554	4.1%	26	2.5%	580	4.0%
JUVENILE OFFENDER						
JUVENILE OFFENDER	23	0.2%	0	0.0%	23	0.2%
GRAND TOTAL	13,444	100.0%	1,052	100.0%	14,496	100.0%

The proportion of new commitments who were women has fluctuated since 1980, with the lowest level occurring in 1983 (3.5%) and the highest in 1991 (9.4%). In 2011, 7.3% of new commitments were women.

TABLE 8.3
NEW COURT COMMITMENTS BY GENDER; 1980-2011

COMMITMENT YEAR	NUMBER OF WOMEN	PERCENT OF NEW COURT COMMITMENTS	NUMBER OF MEN	PERCENT OF NEW COURT COMMITMENTS
1980	284	3.6%	7,675	96.4%
1981	405	3.9%	9,896	96.1%
1982	377	3.6%	10,032	96.4%
1983	438	3.5%	12,051	96.5%
1984	523	4.3%	11,719	95.7%
1985	495	4.0%	11,925	96.0%
1986	721	4.8%	14,213	95.2%
1987	802	5.1%	14,903	94.9%
1988	1,014	5.8%	16,372	94.2%
1989	1,612	7.5%	19,923	92.5%
1990	1,683	7.3%	21,432	92.7%
1991	2,264	9.4%	21,856	90.6%
1992	1,888	7.5%	23,267	92.5%
1993	1,881	7.6%	23,017	92.4%
1994	1,796	7.8%	21,357	92.2%
1995	1,835	8.0%	21,145	92.0%
1996	1,711	8.1%	19,481	91.9%
1997	1,682	8.1%	19,121	91.9%
1998	1,543	7.9%	17,954	92.1%
1999	1,498	7.8%	17,666	92.2%
2000	1,337	7.2%	17,226	92.8%
2001	1,212	7.3%	15,287	92.7%
2002	1,213	7.1%	15,796	92.9%
2003	1,157	6.7%	16,181	93.3%
2004	1,129	6.9%	15,259	93.1%
2005	1,207	7.4%	15,156	92.6%
2006	1,259	7.5%	15,608	92.5%
2007	1,274	7.4%	15,974	92.6%
2008	1,148	7.3%	14,663	92.7%
2009	1,037	6.8%	14,285	93.2%
2010	919	6.2%	13,835	93.8%
2011	1,052	7.3%	13,444	92.7%

Section 9: Race/Ethnic Status

Over the 2007 to 2011 period, nearly half of new court commitments have been African-Americans. The proportion of Whites in the admission group rose from 24% in 2007 to 28% in 2011, while the proportion of African-Americans decreased during the same five-year period from 48% to 43%. The proportion of Hispanics was fairly stable at approximately 26%.

Within offense categories, there were some changes in the racial/ethnic composition of the new court commitments between 2007 and 2011. For example, among drug offenders, the proportion of Whites increased from 12% in 2007 to 16% in 2011, while the corresponding proportion of African-Americans decreased from 56% to 47%. In comparison, the proportion of Whites and Hispanics amongst violent felony admissions increased slightly between 2007 and 2011, while the proportion of African-Americans decreased from 53% to 49% during that same five-year period.

TABLE 9.1
RACE/ETHNIC STATUS BY CRIME TYPE (NUMBER AND COLUMN PERCENTAGES)
2007-2011 NEW COURT COMMITMENTS

	VIOLENT FELONY		OTHER COERCIVE		DRUG OFFENSES		PROPERTY AND OTHER OFFENSES		YO & JO		TOTAL	
	NUMBER	PERCENT	NUMBER	PERCENT	NUMBER	PERCENT	NUMBER	PERCENT	NUMBER	PERCENT	NUMBER	PERCENT
2007												
WHITE	968	19.2%	545	29.9%	720	11.7%	1,674	47.5%	167	23.8%	4,074	23.6%
AFRICAN-AMERICAN	2,656	52.8%	822	45.1%	3,439	55.9%	1,072	30.4%	337	48.1%	8,326	48.3%
HISPANIC	1,329	26.4%	418	22.9%	1,930	31.4%	708	20.1%	186	26.5%	4,571	26.5%
OTHER	62	1.2%	27	1.5%	41	0.7%	56	1.6%	10	1.4%	196	1.1%
UNKNOWN	18	0.4%	12	0.7%	18	0.3%	15	0.4%	1	0.1%	64	0.4%
TOTAL	5,033	100.0%	1,824	100.0%	6,148	100.0%	3,525	100.0%	701	100.0%	17,231	100.0%
2008												
WHITE	946	19.4%	544	31.5%	664	12.8%	1,665	49.0%	138	21.9%	3,957	25.0%
AFRICAN-AMERICAN	2,511	51.6%	739	42.7%	2,839	54.7%	1,058	31.2%	316	50.1%	7,463	47.2%
HISPANIC	1,329	27.3%	394	22.8%	1,607	31.0%	584	17.2%	163	25.8%	4,077	25.8%
OTHER	62	1.3%	42	2.4%	60	1.2%	74	2.2%	11	1.7%	249	1.6%
UNKNOWN	18	0.4%	10	0.6%	20	0.4%	14	0.4%	3	0.5%	65	0.4%
TOTAL	4,866	100.0%	1,729	100.0%	5,190	100.0%	3,395	100.0%	631	100.0%	15,811	100.0%
2009												
WHITE	972	18.5%	556	31.4%	576	13.3%	1,604	47.8%	155	24.9%	3,863	25.2%
AFRICAN-AMERICAN	2,752	52.4%	773	43.7%	2,259	52.2%	1,069	31.8%	311	49.9%	7,164	46.8%
HISPANIC	1,437	27.4%	393	22.2%	1,438	33.3%	586	17.5%	135	21.7%	3,989	26.0%
OTHER	72	1.4%	33	1.9%	42	1.0%	80	2.4%	17	2.7%	244	1.6%
UNKNOWN	15	0.3%	14	0.8%	9	0.2%	19	0.6%	5	0.8%	62	0.4%
TOTAL	5,248	100.0%	1,769	100.0%	4,324	100.0%	3,358	100.0%	623	100.0%	15,322	100.0%
2010												
WHITE	944	17.7%	538	30.6%	522	13.9%	1,592	48.6%	162	25.6%	3,758	25.5%
AFRICAN-AMERICAN	2,778	52.1%	751	42.7%	1,853	49.3%	961	29.4%	310	48.9%	6,653	45.1%
HISPANIC	1,490	27.9%	428	24.4%	1,300	34.6%	613	18.7%	145	22.9%	3,976	26.9%
OTHER	93	1.7%	30	1.7%	49	1.3%	70	2.1%	12	1.9%	254	1.7%
UNKNOWN	29	0.5%	10	0.6%	32	0.9%	37	1.1%	5	0.8%	113	0.8%
TOTAL	5,334	100.0%	1,757	100.0%	3,756	100.0%	3,273	100.0%	634	100.0%	14,754	100.0%
2011												
WHITE	1,062	20.2%	484	31.2%	566	16.1%	1,784	49.9%	140	23.2%	4,036	27.8%
AFRICAN-AMERICAN	2,598	49.4%	660	42.5%	1,654	47.1%	1,041	29.1%	309	51.2%	6,262	43.2%
HISPANIC	1,431	27.2%	356	22.9%	1,195	34.0%	612	17.1%	136	22.6%	3,730	25.7%
OTHER	78	1.5%	28	1.8%	40	1.1%	69	1.9%	7	1.2%	222	1.5%
UNKNOWN	85	1.6%	24	1.5%	55	1.6%	71	2.0%	11	1.8%	246	1.7%
TOTAL	5,254	100.0%	1,552	100.0%	3,510	100.0%	3,577	100.0%	603	100.0%	14,496	100.0%

Section 10: Age at Admission

Average age at admission has remained stable, at 32 years old, over the period 2007 through 2011. The most notable change in the age distribution of new court commitments between 2007 and 2011 occurred in the 50 years of age and older group which increased from 7% in 2007 to 9% in 2011.

TABLE 10.1
AGE AT COMMITMENT BY YEAR RECEIVED: 2007-2011 NEW COURT COMMITMENTS

AGE AT COMMITMENT	YEAR RECEIVED					TOTAL
	2007	2008	2009	2010	2011	
16 YR	79 .5%	50 .3%	69 .5%	73 .5%	73 .5%	344 .4%
17 YR	349 2.0%	294 1.9%	310 2.0%	286 1.9%	280 1.9%	1,519 2.0%
18 YR	588 3.4%	518 3.3%	541 3.5%	487 3.3%	425 2.9%	2,559 3.3%
19 YR	729 4.2%	661 4.2%	681 4.4%	595 4.0%	546 3.8%	3,212 4.1%
20 YR	822 4.8%	695 4.4%	733 4.8%	670 4.5%	654 4.5%	3,574 4.6%
21 YR	809 4.7%	747 4.7%	737 4.8%	718 4.9%	662 4.6%	3,673 4.7%
22-24	2,163 12.5%	2,024 12.8%	1,884 12.3%	1,942 13.2%	1,873 12.9%	9,886 12.7%
25-29	3,061 17.7%	2,780 17.6%	2,722 17.8%	2,690 18.2%	2,618 18.1%	13,871 17.9%
30-34	2,215 12.8%	2,052 13.0%	2,014 13.1%	1,964 13.3%	2,070 14.3%	10,315 13.3%
35-39	1,933 11.2%	1,759 11.1%	1,546 10.1%	1,441 9.8%	1,367 9.4%	8,046 10.4%
40-49	3,353 19.4%	3,055 19.3%	2,879 18.8%	2,719 18.4%	2,611 18.0%	14,617 18.8%
50-59	949 5.5%	974 6.2%	1,036 6.8%	970 6.6%	1,073 7.4%	5,002 6.4%
60 +	198 1.1%	202 1.3%	170 1.1%	199 1.3%	244 1.7%	1,013 1.3%
GRAND TOTAL	17,248 100.0%	15,811 100.0%	15,322 100.0%	14,754 100.0%	14,496 100.0%	77,631 100.0%
AVERAGE	32.4	32.7	32.5	32.5	32.9	32.6

Section 11: County and Region of Commitment

The percentage of new court commitments from New York City and Suburban New York City decreased between 2007 and 2011 from 47% to 45% and 13% to 11%, respectively (see Table 11.1). Female new court commitments accounted for about 6% of all new court commitments in each of the three following regions: New York City, Suburban New York City, and Upstate Urban. By comparison, female new court commitments from Upstate Other counties accounted for 12% of all new court commitments from that region (see Table 11.2)

The majority of new court commitments from New York City, Suburban New York City, and Upstate Urban indictment counties were committed for violent felony offenses. Of these three indictment county regions, Suburban New York City had the highest proportion of violent felony offender commitments at 43%. In contrast, the largest group of new court commitments from Upstate Other indictment counties were committed for property and other crimes (42%) (see Table 11.3).

Figure 11
Region of Commitment of New York State
2011 New Court Commitments, N=14,496

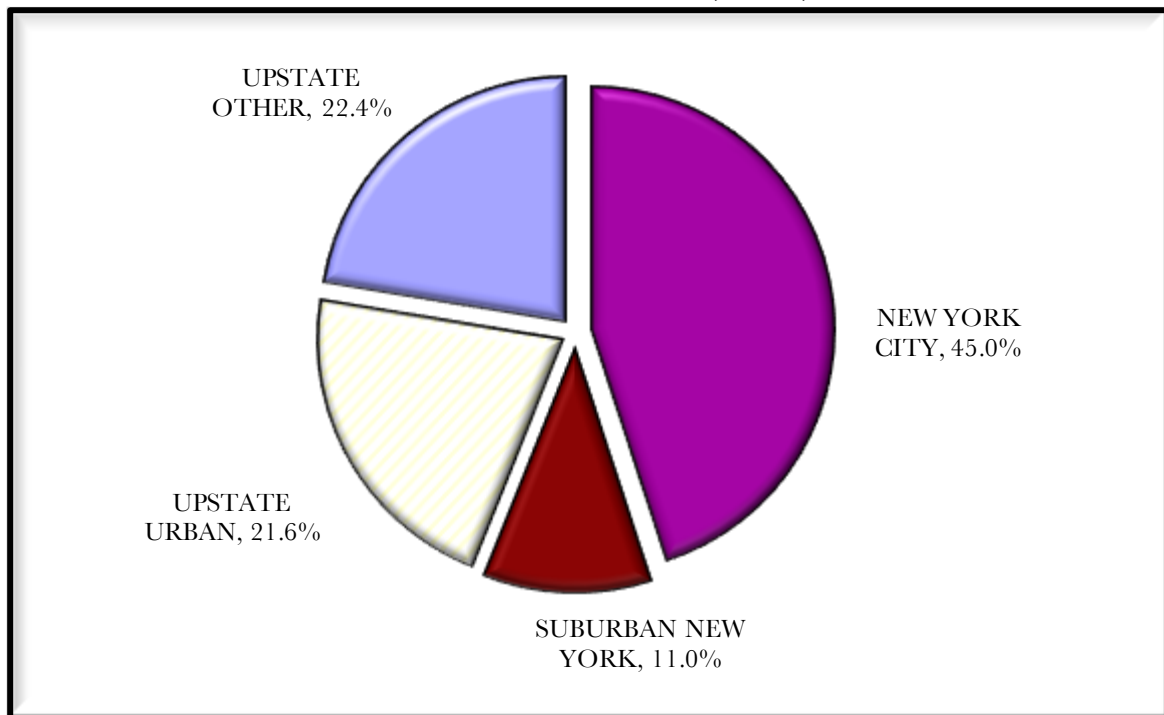


TABLE 11.1
REGION OF COMMITMENT BY YEAR RECEIVED:
2007-2011 NEW COURT COMMITMENTS

	2007		2008		2009		2010		2011		TOTAL	
	NUMBER	PERCENT	NUMBER	PERCENT	NUMBER	PERCENT	NUMBER	PERCENT	NUMBER	PERCENT	NUMBER	PERCENT
NEW YORK CITY	8,156	47.3%	6,906	43.7%	7,117	46.4%	6,845	46.4%	6,522	45.0%	35,546	45.8%
SUBURBAN NEW YORK	2,258	13.1%	2,104	13.3%	1,804	11.8%	1,689	11.4%	1,601	11.0%	9,456	12.2%
UPSTATE URBAN	3,659	21.2%	3,537	22.4%	3,379	22.1%	3,187	21.6%	3,124	21.6%	16,886	21.8%
UPSTATE OTHER	3,175	18.4%	3,264	20.6%	3,022	19.7%	3,033	20.6%	3,249	22.4%	15,743	20.3%
TOTAL	17,248	100.0%	15,811	100.0%	15,322	100.0%	14,754	100.0%	14,496	100.0%	77,631	100.0%

**TABLE 11.2
REGION OF THE STATE AND COUNTY OF COMMITMENT BY GENDER
2011 NEW COURT COMMITMENTS**

		MALE		FEMALE		TOTAL	
		NUMBER	PERCENT	NUMBER	PERCENT	NUMBER	PERCENT
NEW YORK CITY	BRONX	1,105	93.5%	77	6.5%	1,182	100.0%
	KINGS	1,295	95.4%	62	4.6%	1,357	100.0%
	NEW YORK	2,352	93.2%	171	6.8%	2,523	100.0%
	QUEENS	1,206	95.3%	59	4.7%	1,265	100.0%
	RICHMOND	184	94.4%	11	5.6%	195	100.0%
	SUBTOTAL	6,142	94.2%	380	5.8%	6,522	100.0%
SUBURBAN NEWYORK	NASSAU	412	95.2%	21	4.8%	433	100.0%
	ROCKLAND	107	94.7%	6	5.3%	113	100.0%
	SUFFOLK	652	92.7%	51	7.3%	703	100.0%
	WESTCHESTER	331	94.0%	21	6.0%	352	100.0%
	SUBTOTAL	1,502	93.8%	99	6.2%	1,601	100.0%
UPSTATE URBAN	ALBANY	442	92.9%	34	7.1%	476	100.0%
	BROOME	187	96.4%	7	3.6%	194	100.0%
	ERIE	556	94.7%	31	5.3%	587	100.0%
	MONROE	541	93.9%	35	6.1%	576	100.0%
	NIAGARA	163	94.2%	10	5.8%	173	100.0%
	ONEIDA	299	92.9%	23	7.1%	322	100.0%
	ONONDAGA	517	93.0%	39	7.0%	556	100.0%
	RENSSELAER	73	93.6%	5	6.4%	78	100.0%
	SCHENECTADY	146	90.1%	16	9.9%	162	100.0%
	SUBTOTAL	2,924	93.6%	200	6.4%	3,124	100.0%
	UPSTATE OTHER	ALLEGANY	16	80.0%	4	20.0%	20
CATTARAUGUS		83	93.3%	6	6.7%	89	100.0%
CAYUGA		95	91.3%	9	8.7%	104	100.0%
CHAUTAUQUA		72	91.1%	7	8.9%	79	100.0%
CHEMUNG		70	92.1%	6	7.9%	76	100.0%
CHENANGO		34	89.5%	4	10.5%	38	100.0%
CLINTON		76	71.0%	31	29.0%	107	100.0%
COLUMBIA		33	97.1%	1	2.9%	34	100.0%
CORTLAND		41	91.1%	4	8.9%	45	100.0%
DELAWARE		35	92.1%	3	7.9%	38	100.0%
DUTCHESS		192	94.6%	11	5.4%	203	100.0%
ESSEX		27	93.1%	2	6.9%	29	100.0%
FRANKLIN		52	83.9%	10	16.1%	62	100.0%
FULTON		38	95.0%	2	5.0%	40	100.0%
GENESEE		60	85.7%	10	14.3%	70	100.0%
GREENE		55	85.9%	9	14.1%	64	100.0%
HAMILTON		2	100.0%	0	.0%	2	100.0%
HERKIMER		62	92.5%	5	7.5%	67	100.0%
JEFFERSON		68	86.1%	11	13.9%	79	100.0%
LEWIS		14	87.5%	2	12.5%	16	100.0%
LIVINGSTON		51	86.4%	8	13.6%	59	100.0%
MADISON		25	86.2%	4	13.8%	29	100.0%
MONTGOMERY		60	90.9%	6	9.1%	66	100.0%
ONTARIO		154	80.6%	37	19.4%	191	100.0%
ORANGE		278	94.6%	16	5.4%	294	100.0%
ORLEANS		55	85.9%	9	14.1%	64	100.0%
OSWEGO		113	89.0%	14	11.0%	127	100.0%
OTSEGO		42	77.8%	12	22.2%	54	100.0%
PUTNAM		41	91.1%	4	8.9%	45	100.0%
ST LAWRENCE		80	96.4%	3	3.6%	83	100.0%
SARATOGA		115	89.1%	14	10.9%	129	100.0%
SCHOHARIE		14	100.0%	0	.0%	14	100.0%
SCHUYLER		15	93.8%	1	6.3%	16	100.0%
SENECA		23	100.0%	0	.0%	23	100.0%
STEBEN	79	92.9%	6	7.1%	85	100.0%	
SULLIVAN	81	91.0%	8	9.0%	89	100.0%	
TIOGA	36	97.3%	1	2.7%	37	100.0%	
TOMPKINS	57	82.6%	12	17.4%	69	100.0%	
ULSTER	169	86.7%	26	13.3%	195	100.0%	
WARREN	113	87.6%	16	12.4%	129	100.0%	
WASHINGTON	69	74.2%	24	25.8%	93	100.0%	
WAYNE	40	88.9%	5	11.1%	45	100.0%	
WYOMING	23	85.2%	4	14.8%	27	100.0%	
YATES	18	75.0%	6	25.0%	24	100.0%	
SUBTOTAL	2,876	88.5%	373	11.5%	3,249	100.0%	
GRAND TOTAL	13,444	92.7%	1,052	7.3%	14,496	100.0%	

TABLE 11.3
CRIME BY REGION OF COMMITMENT; 2011 NEW COURT COMMITMENTS

	NEW YORK CITY	SUBURBAN NEW YORK	UPSTATE URBAN	UPSTATE OTHER	TOTAL
VIOLENT FELONY					
MURDER	75	27	29	18	149
ATTEMPTED MURDER	77	13	12	9	111
MANSLT 1ST,AG 2ND	107	24	33	12	176
RAPE 1ST	62	16	28	28	134
ROBBERY 1ST	290	68	116	45	519
ROBBERY 2ND	487	85	130	52	754
ASSAULT 1ST	195	28	57	26	306
ASSAULT 2ND	248	56	102	75	481
BURGLARY 1ST	55	19	35	26	135
BURGLARY 2ND	293	136	252	196	877
ARSON 1ST,2ND	15	5	13	7	40
SODOMY 1ST	25	11	31	22	89
SEXAB-1ST,Ag.2	94	30	51	62	237
WEAPONS OFFENSES	520	135	296	77	1,028
KIDNAPPING 1ST,2ND	11	6	9	7	33
OTHER VFO SEX OFFENSES	35	22	32	64	153
OTHER VIOLENT FELONIES	10	3	8	11	32
SUBTOTAL	2,599 39.8%	684 42.7%	1,234 39.5%	737 22.7%	5,254 36.2%
OTHER COERCIVE					
MANSLAUGHTER 2ND	17	8	9	8	42
OTHER HOMICIDE	13	7	10	18	48
ROBBERY 3RD	277	37	74	48	436
ATT ASSAULT 2ND	104	28	55	47	234
CONSPIRACY 2,3,4	64	17	13	13	107
OTHER WEAPONS	157	36	44	42	279
OTHER SEX OFFENSES	57	21	51	116	245
OTHER COERCIVE	47	25	41	48	161
SUBTOTAL	736 11.3%	179 11.2%	297 9.5%	340 10.5%	1,552 10.7%
DRUG OFFENSES					
DRUG SALE	1,190	201	232	367	1,990
DRUG POSSESSION	622	147	440	311	1,520
SUBTOTAL	1,812 27.8%	348 21.7%	672 21.5%	678 20.9%	3,510 24.2%
PROPERTY AND OTHER					
BURGLARY 3RD	353	86	204	333	976
GRAND LARCENY	346	83	126	213	768
FORGERY	100	26	62	86	274
STOLEN PROPERTY	63	24	47	49	183
DRIVE INTOXICATED	28	67	131	404	630
CONTEMPT 1ST	62	14	66	78	220
ALL OTHER FELONIES	173	45	115	193	526
SUBTOTAL	1,125 17.2%	345 21.5%	751 24.0%	1,356 41.7%	3,577 24.7%
YOUTHFUL OFFENDER					
YOUTHFUL OFFENDER	239 3.7%	44 2.7%	162 5.2%	135 4.2%	580 4.0%
JUVENILE OFFENDER					
JUVENILE OFFENDER	11 0.2%	1 0.1%	8 0.3%	3 0.1%	23 0.2%
GRAND TOTAL	6,522 100.0%	1,601 100.0%	3,124 100.0%	3,249 100.0%	14,496 100.0%

Section 12: Country of Birth

Almost 90% of 2011 new court commitments were born in the United States or in U.S. possessions, 5% in Caribbean nations, 1% in South America, and 4% in all other countries (see Figure 12). Among foreign-born new court commitments, 47% were born in one of the countries within the Caribbean region with 25% of foreign-born offenders having been born in the Caribbean island of the Dominican Republic (see Tables 12.2 and 12.3).

Native-born new court commitments were less likely to be committed for violent felony offenses and drug offenses than foreign-born new court commitments (35% versus 46% and 24% versus 26%, respectively). In contrast, native-born new court commitments were more likely to be committed for property and other offenses than foreign-born new court commitments (26% versus 17%) (see Table 12.1)

Figure 12
Country of Birth
2011 New Court Commitments, N=14,496

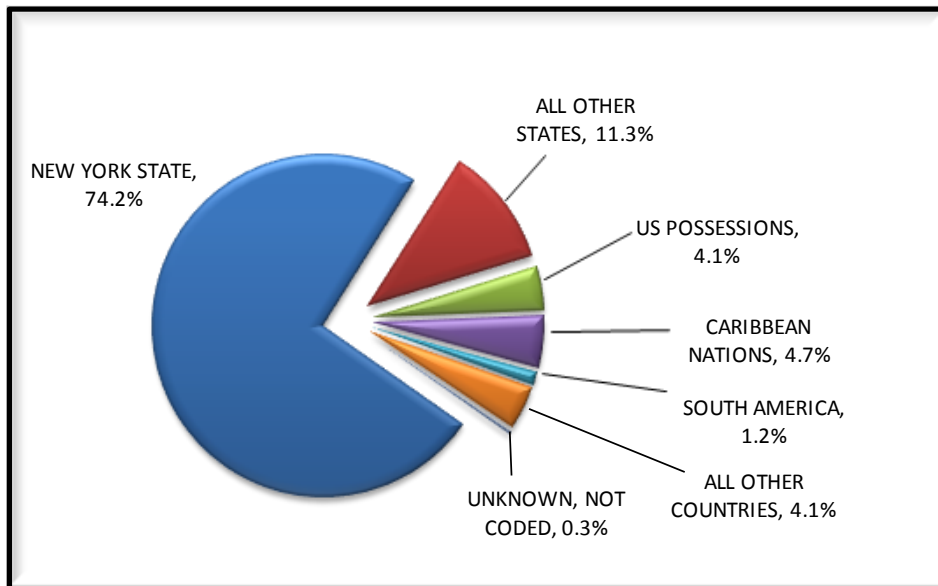


TABLE 12.1
COMMITMENT CRIME BY PLACE OF BIRTH: 2011 NEW COURT COMMITMENTS

	NATIVE BORN				SUBTOTAL	CARIBBEAN	SOUTH AMERICA	ALL OTHER COUNTRIES	SUBTOTAL	UNKNOWN POB	TOTAL
	NEW YORK STATE	UNITED STATES	U.S. POSSESSIONS	REGION UNKNOWN							
VIOLENT FELONY	3,866	517	181	4,564	263	85	322	670	20	5,254	
OTHER COERCIVE	1,192	181	53	1,426	51	13	59	123	3	1,552	
DRUG OFFENSES	2,488	372	270	3,130	256	43	74	373	7	3,510	
PROPERTY AND OTHER OFFENSES	2,712	507	101	3,320	89	32	127	248	9	3,577	
YOUTHFUL/JUVENILE	504	45	13	562	20	8	13	41	0	603	
TOTAL	10,762	1,622	618	13,002	679	181	595	1,455	39	14,496	
PERCENT	74.2%	11.2%	4.3%	89.7%	4.7%	1.2%	4.1%	10.0%	.3%	100.0%	

**TABLE 12.2
FOREIGN BORN INMATES
BY REGION OF BIRTH AND COUNTRY OF ORIGIN
2011 NEW COURT COMMITMENTS**

	NUMBER	PERCENT
NORTH AMERICA	174	12.0%
CARIBBEAN	679	46.7%
CENTRAL AMERICA	196	13.5%
SOUTH AMERICA	181	12.4%
EUROPE	103	7.1%
AFRICA	44	3.0%
NEAR EAST	17	1.2%
ASIA	58	4.0%
SOUTH PACIFIC	3	.2%
TOTAL	1,455	100.0%

**TABLE 12.3
TOP TEN COUNTRIES OF ORIGIN
OF FOREIGN-BORN INMATES BY COMMITMENT OFFENSE
2011 NEW COURT COMMITMENTS**

	VFO OR COERCIVE		DRUG		PROPERTY & OTHER		YO & JO		TOTAL	
	NUMBER	PERCENT	NUMBER	PERCENT	NUMBER	PERCENT	NUMBER	PERCENT	NUMBER	PERCENT
DOMINICAN REPUBLIC	134	36.6%	191	52.2%	30	8.2%	11	3.0%	366	100.0%
MEXICO	127	80.4%	11	7.0%	19	12.0%	1	.6%	158	100.0%
JAMAICA	89	61.4%	29	20.0%	23	15.9%	4	2.8%	145	100.0%
EL SALVADOR	60	81.1%	4	5.4%	8	10.8%	2	2.7%	74	100.0%
GUYANA	36	62.1%	8	13.8%	10	17.2%	4	6.9%	58	100.0%
HONDURAS	45	77.6%	4	6.9%	6	10.3%	3	5.2%	58	100.0%
ECUADOR	31	59.6%	12	23.1%	6	11.5%	3	5.8%	52	100.0%
GUATAMALA	32	69.6%	7	15.2%	7	15.2%	0	.0%	46	100.0%
TRINIDAD & TOBAGO	28	60.9%	5	10.9%	9	19.6%	4	8.7%	46	100.0%
COLOMBIA	18	41.9%	20	46.5%	5	11.6%	0	.0%	43	100.0%
TOTAL	600	57.4%	291	27.8%	123	11.8%	32	3.1%	1046	100.0%

Section 13: Marital Status

Among 2011 new court commitments, 74% reported that they were single, never married; 2% reported common law marriages; 15% reported that they were married, and 10% were divorced, separated or widowed.

The majority of both male and female new court commitments were not married (76% and 65% respectively). Female new court commitments were, however, more likely than their male counterparts to have been married, or divorced, widowed, or separated (17% versus 14% and 18% versus 10% respectively)(see Table 13).

TABLE 13
MARITAL STATUS* BY SEX
2011 NEW COURT COMMITMENTS

	MALE		FEMALE		TOTAL	
	NUMBER	PERCENT	NUMBER	PERCENT	NUMBER	PERCENT
NOT MARRIED						
SINGLE	9,912	74.2%	677	64.5%	10,589	73.5%
SUBTOTAL	9,912	74.2%	677	64.5%	10,589	73.5%
MARRIED						
COMMON LAW	243	1.8%	2	0.2%	245	1.7%
MARRIED	1,912	14.3%	177	16.9%	2,089	14.5%
SUBTOTAL	2,155	16.1%	179	17.0%	2,334	16.2%
DIVORCED/WIDOWED/SEPARATED						
DIVORCED	729	5.5%	102	9.7%	831	5.8%
WIDOWED	102	0.8%	43	4.1%	145	1.0%
SEPARATED	457	3.4%	49	4.7%	506	3.5%
SUBTOTAL	1,288	9.6%	194	18.5%	1,482	10.3%
GRAND TOTAL	13,355	100.0%	1,050	100.0%	14,405	100.0%

*Marital status is self-reported unless otherwise documented.

In 2011, 91 cases did not have marital status recorded.

Section 14: Jail Time

Time spent in local jail prior to commitment to state prison is credited toward service of the minimum term. Average jail time served by new court commitments increased between 2007 from 6.9 months to 7.9 months. This increase was largely due to the increases in average jail time in the violent felony offender and other coercive crime categories (see Table 14.1).

Jail time among Upstate Urban and Upstate Rural commitments was stable between 2007 and 2011. However, there were significant increases in average jail time for the New York City and Suburban New York City regions during the five-year period (from 8.5 to 10.1 months and 7.3 to 9.3 months, respectively) (see Table 14.2)

TABLE 14.1
CRIME BY AVERAGE JAIL TIME (IN MONTHS) BY YEAR RECEIVED;
2007-2011 NEW COURT COMMITMENTS

	2007	2008	2009	2010	2011	TOTAL
	AVG	AVG	AVG	AVG	AVG	AVG
VIOLENT FELONY						
MURDER	18.8	19.2	18.4	20.7	22.5	19.8
ATTEMPTED MURDER	14.0	14.8	14.8	16.2	17.2	15.4
MANSLAUGHTER 1ST	19.7	18.6	20.7	19.3	22.8	20.2
RAPE 1ST	9.9	9.8	10.6	12.4	13.1	11.0
ROBBERY 1ST	10.0	10.5	11.1	11.7	12.1	11.0
ROBBERY 2ND	8.2	8.3	8.6	9.1	9.8	8.8
ASSAULT 1ST	10.4	12.0	11.4	11.3	12.7	11.6
ASSAULT 2ND	8.3	8.9	9.0	9.0	9.8	9.0
BURGLARY 1ST	9.7	11.1	12.2	13.0	14.0	12.1
BURGLARY 2ND	7.7	7.8	8.2	8.5	8.2	8.1
ARSON 1ST,2ND	10.3	8.7	13.8	9.5	11.1	10.8
SODOMY 1ST	8.7	8.3	9.6	9.6	9.6	9.1
SEX.AB-1ST,Ag.2	6.8	7.3	7.7	8.6	8.7	7.8
WEAPONS OFFENSES	7.0	7.9	7.9	8.0	8.1	7.8
KIDNAPPING 1ST,2ND	12.0	9.6	10.0	9.9	12.9	11.1
OTHER VFO SEX OFFENSES	.	7.2	10.6	8.4	7.5	8.1
OTHER VIOLENT FELONIES	6.6	6.0	6.6	7.6	7.7	7.0
SUBTOTAL	9.3	9.7	9.9	10.2	10.6	10.0
OTHER COERCIVE						
MANSLAUGHTER 2ND	8.6	9.2	7.5	12.1	10.5	9.6
OTHER HOMICIDE	3.7	4.5	5.1	8.0	4.7	5.5
ROBBERY 3RD	6.9	7.1	7.6	7.6	7.7	7.4
ATT ASSAULT 2ND	6.8	7.1	7.2	8.2	7.3	7.3
CONSPIRACY 2,3,4	11.2	10.8	9.7	11.2	14.5	11.6
OTHER WEAPONS	6.5	6.4	7.1	7.1	7.3	6.8
OTHER SEX OFFENSES	6.1	5.5	5.9	5.7	6.3	5.9
OTHER COERCIVE	6.3	6.5	6.5	5.9	7.7	6.5
SUBTOTAL	6.9	6.8	7.0	7.4	7.8	7.2
DRUG OFFENSES						
DRUG SALE	6.3	6.4	6.8	6.8	6.9	6.6
DRUG POSSESSION	5.6	5.5	6.4	5.9	5.8	5.8
SUBTOTAL	6.0	6.0	6.6	6.4	6.4	6.2
PROPERTY AND OTHER						
BURGLARY 3RD	5.9	6.1	6.5	6.4	6.5	6.3
GRAND LARCENY	5.6	5.9	5.6	5.9	5.9	5.8
FORGERY	5.7	6.0	5.6	5.7	5.7	5.7
STOLEN PROPERTY	6.0	5.8	6.8	6.6	6.4	6.3
DRIVE INTOXICATED	3.6	3.5	3.6	3.6	3.7	3.6
CONTEMPT 1ST	6.1	6.7	6.3	6.1	6.4	6.3
ALL OTHER FELONIES	5.5	5.4	5.9	6.3	6.4	5.9
SUBTOTAL	5.4	5.5	5.7	5.7	5.8	5.6
YO & JO						
YOUTHFUL OFFENDER	5.7	6.2	5.6	5.7	6.2	5.9
JUVENILE OFFENDER	8.5	7.2	15.5	12.9	15.1	12.4
SUBTOTAL	5.8	6.2	6.0	6.2	6.6	6.1
GRAND TOTAL	6.9	7.1	7.5	7.7	7.9	7.4

TABLE 14.2
REGION BY AVERAGE JAIL TIME (IN MONTHS) BY YEAR RECEIVED
2007-2011 NEW COURT COMMITMENTS

	2007	2008	2009	2010	2011	TOTAL
COMMITMENT REGION	AVERAGE	AVERAGE	AVERAGE	AVERAGE	AVERAGE	AVERAGE
NEW YORK CITY	8.5	9.0	9.5	9.6	10.1	9.3
SUBURBAN NEWYORK	7.3	7.6	8.4	9.2	9.3	8.2
UPSTATE URBAN	5.1	5.2	5.1	5.4	5.5	5.2
UPSTATE OTHER	4.9	5.0	5.2	5.1	5.4	5.1
GRAND TOTAL	7.0	7.1	7.5	7.7	7.9	7.4

Section 15: Life Without Parole

A person convicted of the crimes of murder in the first degree or aggravated murder may be sentenced to life imprisonment without the possibility of parole. Consequently, persons sentenced to Life Without Parole (LWOP) are not eligible for early release on parole or for conditional release.

In 2011, seventeen offenders were admitted to DOCCS prison facilities with a Life Without Parole sentence. Of these seventeen offenders, fifteen offenders were male and two were female. About one-third (6 of 17) were committed from Upstate Other counties.

Of the 71 offenders admitted to DOCCS in the five-year period 2007-2011 with a Life Without Parole sentence, the youngest offender was 21 years old at admission to DOCCS, while the oldest was 61 years old.

TABLE 15.1
CHARACTERISTICS OF LIFE WITHOUT PAROLE CASES; 2007-2011 NEW COURT COMMITMENTS

CHARACTERISTICS	YEAR RECEIVED							
	2007	2008	2009	2010	2011	TOTAL		
	NUMBER	NUMBER	NUMBER	NUMBER	NUMBER	NUMBER	PERCENT	
COMMITMENT OFFENSE								
MURDER 1ST	15	14	10	12	17	68	95.8%	
AGGRAVATED MURDER	0	1	2	0	0	3	4.2%	
TOTAL	15	15	12	12	17	71	100.0%	
GENDER								
MEN	15	15	11	12	15	68	95.8%	
WOMEN	0	0	1	0	2	3	4.2%	
TOTAL	15	15	12	12	17	71	100.0%	
RACE/ETHNIC STATUS ADJUSTED BY BIRTHPLACE								
WHITE	2	6	3	2	7	20	28.2%	
AFRICAN-AMERICAN	13	5	8	7	6	39	54.9%	
HISPANIC	0	4	0	3	3	10	14.1%	
OTHER	0	0	1	0	1	2	2.8%	
TOTAL	15	15	12	12	17	71	100.0%	
AGE AT ADMISSION								
20 YR	0	0	0	0	0	0	0.0%	
21 YR	3	0	0	0	0	3	4.2%	
22-24	1	2	0	1	3	7	9.9%	
25-29	2	2	1	4	3	12	16.9%	
30-34	0	2	3	3	5	13	18.3%	
35-39	4	2	3	2	2	13	18.3%	
40-49	4	4	3	2	3	16	22.5%	
50-59	1	2	2	0	1	6	8.5%	
60 +	0	1	0	0	0	1	1.4%	
TOTAL	15	15	12	12	17	71	100.0%	
REGION OF COMMITMENT								
NEW YORK CITY	4	10	6	6	4	30	42.3%	
SUBURBAN NEW YORK	2	1	0	5	4	12	16.9%	
UPSTATE URBAN	5	2	4	1	3	15	21.1%	
UPSTATE OTHER	4	2	2	0	6	14	19.7%	
TOTAL	15	15	12	12	17	71	100.0%	

Section 16: Determinate Sentencing

A determinate sentence is a sentence whose length is fixed by a judge at sentencing. Offenders must serve at least sixth-sevenths of this determinate sentence before they are eligible for conditional released to the community. The remaining 1/7th of the sentence represents “good time.” If an inmate is administratively determined to have violated prison rules, that inmate may lose a portion of his or her good time. If that loss of good time is not restored at some point, the inmate will serve more than the mandated sixth-sevenths of the judicially imposed determinate sentence.

Sixty percent (60%) of the 2011 new court commitments were sentenced to a determinate sentence while 40% were sentenced to an indeterminate sentence. Fifty-eight percent of new court commitments with a determinate sentence were first felony offenders (see Table 16.1).

According to Table 16.3, in 2011, 99% of drug commitments and 95% of violent felony offenders who were committed to state prison received determinate or fixed length sentences.

TABLE 16.1
AGGREGATE MINIMUM SENTENCE BY DETERMINATE SENTENCING STATUS AND CRIME CLASS
2011 NEW COURT COMMITMENTS

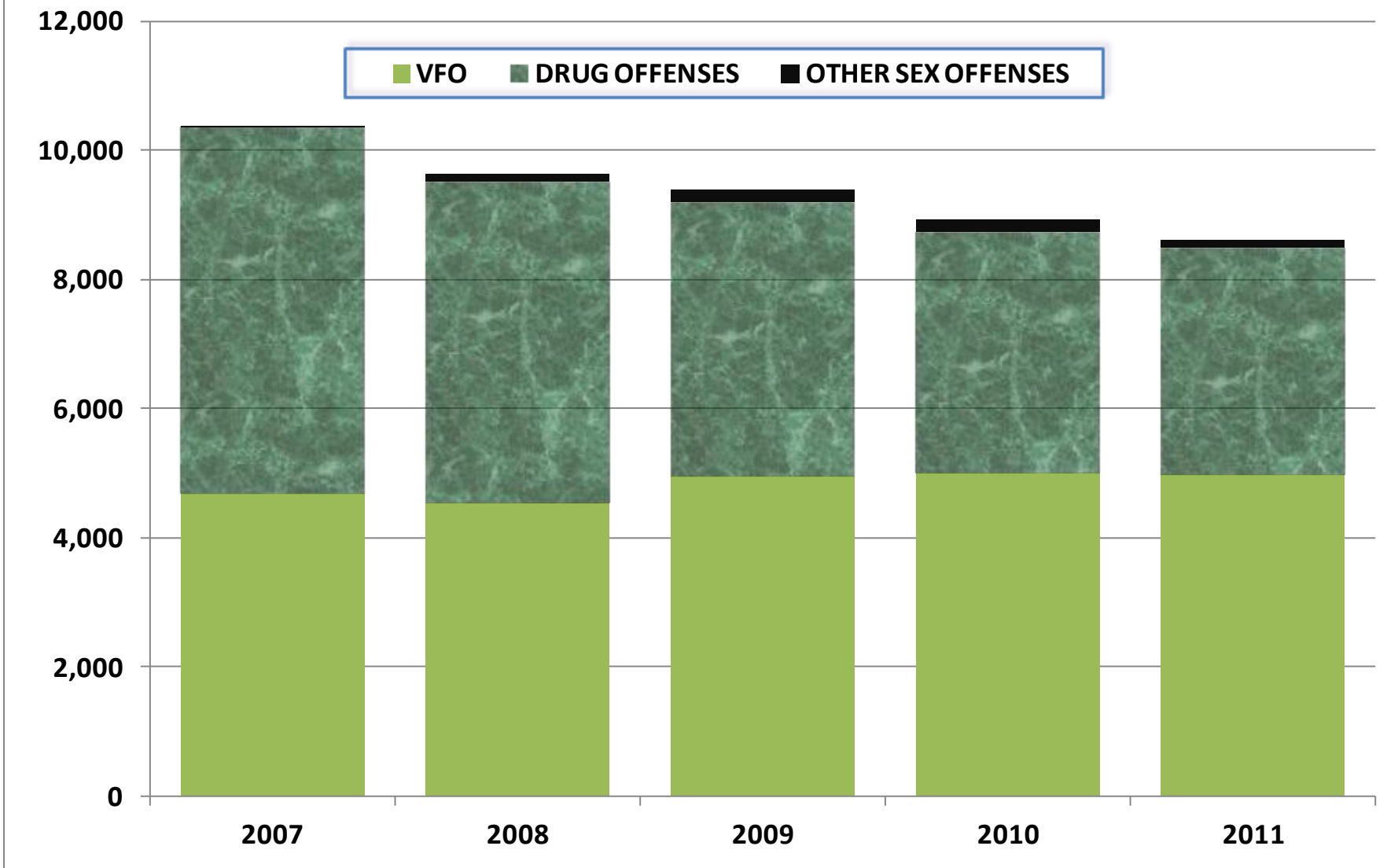
	INDETERMINATE			DETERMINATE			TOTAL		
	NUMBER	AVERAGE	MEDIAN	NUMBER	AVERAGE	MEDIAN	NUMBER	AVERAGE	MEDIAN
FIRST FELONY OFFENDER									
A-I FELONY	163	378.4	300.0	19	90.3	82.0	182	348.4	300.0
A-II FELONY	22	229.0	210.0	174	38.7	33.0	196	60.0	36.0
CLASS B FELONY	129	42.6	36.0	1,681	70.6	51.0	1,810	68.6	51.0
CLASS C FELONY	159	30.9	28.0	1,356	45.0	36.0	1,515	43.5	36.0
CLASS D FELONY	1,097	18.8	16.0	1,660	27.7	21.0	2,757	24.2	21.0
CLASS E FELONY	1,136	14.1	12.0	135	24.1	21.0	1,271	15.1	12.0
YOUTHFUL OFFENDER	559	15.1	12.0	21	14.5	10.0	580	15.1	12.0
SUBTOTAL	3,265	37.4	16.0	5,046	47.1	35.0	8,311	43.3	22.0
Column Percentage	55.7%			58.5%			57.3%		
SECOND FELONY OFFENDER									
A-I FELONY	0	0.0	0.0	7	220.3	165.0	7	220.3	165.0
A-II FELONY	4	303.0	234.0	41	75.1	72.0	45	95.4	82.0
CLASS B FELONY	55	185.0	120.0	1,203	65.4	36.0	1,258	70.7	41.0
CLASS C FELONY	85	116.9	60.0	1,059	55.9	51.0	1,144	60.4	51.0
CLASS D FELONY	1,081	34.3	24.0	1,106	37.0	31.0	2,187	35.6	30.0
CLASS E FELONY	1,377	20.2	18.0	167	22.8	21.0	1,544	20.4	18.0
SUBTOTAL	2,602	33.1	24.0	3,583	52.3	41.0	6,185	44.2	30.0
Column Percentage	44.3%			41.5%			42.7%		
GRAND TOTAL	5,867	35.5	18.0	8,629	49.3	36.0	14,496	43.7	26.0
Row Percent of Grand Total	40.5%			59.5%			100.0%		

TABLE 16.2
AGGREGATE MINIMUM SENTENCES FOR DETERMINATE CASES BY CRIME CATEGORY AND CLASS
2007-2011 NEW COURT COMMITMENTS

	2007		2008		2009		2010		2011	
	NUMBER	AVERAGE	NUMBER	AVERAGE	NUMBER	AVERAGE	NUMBER	AVERAGE	NUMBER	AVERAGE
VFO										
CLASS B FELONY	1,169	128.4	1,115	123.3	1,153	118.7	1,228	120.6	1,154	124.2
CLASS C FELONY	1,495	60.7	1,487	59.2	1,666	59.1	1,670	59.3	1,693	58.4
CLASS D FELONY	1,938	34.6	1,937	33.5	2,184	33.2	2,146	34.1	2,117	34.5
CLASS E FELONY	96	24.8	32	26.0	20	29.3	20	28.7	14	25.4
SUBTOTAL	4,698	66.1	4,571	63.7	5,023	61.4	5,064	63.4	4,978	63.4
OTHER OFFENSES*										
A-II FELONY	1	185.0	0	0	0	0	0	0	0	0
CLASS B FELONY	3	18.3	0	0	1	26.0	0	0	0	0
CLASS C FELONY	0	0	2	51.0	0	0	0	0	0	0
CLASS D FELONY	10	39.6	5	35.8	4	37.5	2	46.0	0	0
CLASS E FELONY	7	27.9	11	24.3	4	31.5	5	22.6	4	34.8
YOUTHFUL OFFENDER	1	21.0	1	15.0	4	19.5	1	21.0	1	10.0
SUBTOTAL	22	38.7	19	29.6	13	29.2	8	28.3	5	29.8
DRUG										
A-I FELONY	26	104.3	21	126.7	55	125.2	35	127.9	26	125.3
A-II FELONY	302	51.9	244	52.4	237	50.3	241	49.5	215	45.6
CLASS B FELONY	2,046	32.0	1,864	32.0	1,766	31.9	1,764	30.8	1,730	31.3
CLASS C FELONY	1,639	27.7	1,359	28.3	999	28.1	788	27.6	722	29.6
CLASS D FELONY	1,378	19.7	1,258	19.6	962	20.1	724	21.8	641	21.0
CLASS E FELONY	236	17.9	204	17.5	195	18.0	160	18.9	150	18.2
YOUTHFUL OFFENDER	40	12.0	36	12.6	30	11.4	23	13.2	20	14.8
SUBTOTAL	5,667	28.4	4,986	28.5	4,244	29.8	3,735	29.9	3,504	30.0
OTHER SEX OFFENSES										
CLASS C FELONY	0	0	2	82.0	3	58.0	1	82.0	0	0
CLASS D FELONY	8	41.9	10	61.3	6	47.3	7	30.3	8	58.0
CLASS E FELONY	6	34.5	64	26.5	110	25.7	130	28.9	134	28.8
SUBTOTAL	14	38.7	76	32.6	119	27.6	138	29.4	142	30.4
TOTAL										
A-I FELONY	26	104.3	21	126.7	55	125.2	35	127.9	26	125.3
A-II FELONY	303	52.4	244	52.4	237	50.3	241	49.5	215	45.6
CLASS B FELONY	3,218	67.0	2,979	66.2	2,920	66.2	2,992	67.7	2,884	68.4
CLASS C FELONY	3,134	43.5	2,850	44.5	2,668	47.5	2,459	49.1	2,415	49.8
CLASS D FELONY	3,334	28.5	3,210	28.2	3,156	29.3	2,879	31.0	2,766	31.4
CLASS E FELONY	345	20.3	311	20.4	329	21.4	315	23.7	302	23.4
YOUTHFUL OFFENDER	41	12.2	37	12.6	34	12.3	24	13.5	21	14.5
GRAND TOTAL	10,401	45.5	9,652	45.2	9,399	46.7	8,945	48.8	8,629	49.3

* Note: Other Offenses represents cases with determinate sentences that fall outside New York State sentencing guidelines for determinate sentencing.

Figure 16.1
Commitments with Determinate Sentences by Crime, 2007 - 2011



**TABLE 16.3
SENTENCE TYPE BY CRIME CATEGORY FOR VFO AND DRUG OFFENSES
2007-2011 NEW COURT COMMITMENTS**

	2007		2008		2009		2010		2011	
	NUMBER	PERCENT	NUMBER	PERCENT	NUMBER	PERCENT	NUMBER	PERCENT	NUMBER	PERCENT
VIOLENT FELONY										
INDETERMINATE	343	6.8%	341	6.9%	296	5.6%	343	6.3%	276	5.3%
DETERMINATE	4,699	93.2%	4,571	93.1%	5,023	94.4%	5,064	93.7%	4,978	94.7%
SUBTOTAL	5,042	100.0%	4,912	100.0%	5,319	100.0%	5,407	100.0%	5,254	100.0%
DRUG										
INDETERMINATE	520	8.5%	240	4.6%	110	2.5%	44	1.2%	26	.7%
DETERMINATE	5,627	91.5%	4,950	95.4%	4,214	97.5%	3,712	98.8%	3,484	99.3%
SUBTOTAL	6,147	100.0%	5,190	100.0%	4,324	100.0%	3,756	100.0%	3,510	100.0%
TOTAL										
INDETERMINATE	863	7.7%	581	5.8%	406	4.2%	387	4.2%	302	3.4%
DETERMINATE	10,325	92.3%	9,521	94.2%	9,237	95.8%	8,776	95.8%	8,462	96.6%
SUBTOTAL	11,189	100.0%	10,102	100.0%	9,643	100.0%	9,163	100.0%	8,764	100.0%

APPENDIX A

APPENDIX A-1: SENTENCE TO PRISON FOR NON-DRUG FIRST FELONY OFFENSE
RANGE OF MINIMUM AND MAXIMUM SENTENCES ACCORDING TO FELONY CLASS CATEGORY ¹

FELONY CLASS	VIOLENT FELONY OFFENSE (1978 - 1995)	VIOLENT FELONY OFFENSE (Oct. 1995-Aug. 1998) ²	VIOLENT FELONY OFFENSE (After Sep. 1998) ³	NON-VIOLENT FELONY SEX OFFENSE (After Apr. 2007) ⁴	PREDATORY SEXUAL ASSAULT (After Apr. 2007)⁴	ALL OTHER FELONY OFFENSES
A-I Felony						Life, Death or Life Without Parole ⁵
Maximum	N/A (Not Available)	N/A (Not Available)	N/A (Not Available)	N/A (Not Available)	N/A (Not Available)	
Minimum						15 - 25 years (for offenders with Life maximum) (minimum sentence fixed by court)
A-II Felony						
Maximum	N/A (Not Available)	N/A (Not Available)	N/A (Not Available)	N/A (Not Available)	Life	Life
Minimum					10 - 25 (minimum sentence fixed by court)	3 - 8 1/3 (minimum sentence fixed by court)
Class B Felony						
Maximum	6 - 25	6 - 25	5-25 (determinate)	5-25 (determinate)	N/A (Not Available)	3 - 25 ⁶
Minimum	2 - 8 1/3 (Minimum = 1/3 of maximum sentence)	3 - 12 1/2 (Minimum = 1/2 of maximum sentence)	6/7 of determinate sentence	6/7 of determinate sentence		1 - 8 1/3 (Minimum = 1/3 of maximum sentence)
Class C Felony						
Maximum	4 1/2 - 15	4 1/2 - 15	3 1/2 - 15 (determinate)	3 1/2 - 15 (determinate)	N/A (Not Available)	3 - 15
Minimum	1 1/2 - 5 (Minimum = 1/3 of maximum sentence)	2 1/4 - 7 1/2 (Minimum = 1/2 of maximum sentence)	6/7 of determinate sentence	6/7 of determinate sentence		1 - 5 (Minimum = 1/3 of maximum sentence)
Class D Felony						
Maximum	3 - 7	3 - 7	2 - 7 (determinate)	2 - 7 (determinate)	N/A (Not Available)	3 - 7
Minimum	1 - 2 1/3 (Minimum = 1 year up to 1/3 of maximum)	1 1/2 - 3 1/2 (Minimum = 1/2 of maximum sentence)	6/7 of determinate sentence	6/7 of determinate sentence		1 - 2 1/3 (Minimum = 1/3 of maximum sentence)
Class E Felony						
Maximum	3 - 4	3 - 4	1 1/2 to 4 (determinate)	1 1/2 to 4 (determinate)	N/A (Not Available)	3 - 4
Minimum	1 - 1 1/3 (Minimum = 1 year up to 1/3 of maximum)	1 1/2 - 2 (Minimum = 1/2 year of maximum sentence)	6/7 of determinate sentence	6/7 of determinate sentence		1 - 1 1/3 (Minimum = 1/3 of maximum sentence)

¹ For more detail see Article 70, Sentences of Imprisonment, New York State Penal law or New York State Sentence Charts, West Publishing Co. 2004.

² Sentences Pursuant to Sentencing Reform Act of 1995.

³ Sentences pursuant to changes in NYS Penal law effective September 1, 1998 (Jenna's Law).

⁴ Sentences pursuant to Sex Offender Management and Treatment Act (SOMTA) effective April 13, 2007.

⁵ Death or Life Without Parole is permitted for Murder 1 crimes committed on or after September 1, 1995.

APPENDIX A-2: SENTENCES TO PRISON FOR NON-DRUG SECOND FELONY OFFENSE
RANGE OF MINIMUM AND MAXIMUM SENTENCES ACCORDING TO FELONY CLASS CATEGORY

FELONY CLASS	SECOND VIOLENT FELONY OFFENSE (1978 - 1995) ¹	SECOND VIOLENT FELONY OFFENSE (After Oct. 1995)	VIOLENT SECOND FELONY OFFENSE (After Oct. 1995)	NON-VIOLENT SEX OFFENSE (Has Prior Non-Violent Felony Conviction) (After April 2007) ²	NON-VIOLENT SEX OFFENSE (Has Prior Violent Felony Conviction) (After Apr. 2007) ²	PREDATORY SEXUAL ASSAULT (After April 2007) ²	ALL OTHER FELONY OFFENSES ³
A-I Felony							
Maximum	N/A (Not Available)	N/A (Not Available)	N/A (Not Available)	N/A (Not Available)	N/A (Not Available)	N/A (Not Available)	N/A (Not Available)
Minimum	N/A (Not Available)	N/A (Not Available)	N/A (Not Available)	N/A (Not Available)	N/A (Not Available)		N/A (Not Available)
A-II Felony							
Maximum	N/A (Not Available)	N/A (Not Available)	N/A (Not Available)	N/A (Not Available)	N/A (Not Available)	Life	N/A (Not Available)
Minimum	N/A (Not Available)	N/A (Not Available)	N/A (Not Available)	N/A (Not Available)	N/A (Not Available)	10 - 25 (minimum sentence fixed by court)	N/A (Not Available)
Class B Felony							
Maximum	12 - 25	10 - 25 (determinate)	8 - 25 (determinate)	8 - 25 (determinate)	9 - 25 (determinate)	N/A (Not Available)	9 - 25
Minimum	6 - 12 1/2 (Minimum = 1/2 of Maximum)	6/7 of determinate sentence	6/7 of determinate sentence	6/7 of determinate sentence	6/7 of determinate sentence		4 1/2 - 12 1/2 (Minimum = 1/2 of maximum sentence)
Class C Felony							
Maximum	8 - 15	7 - 15 (determinate)	5 - 15 (determinate)	5 - 15 (determinate)	6 - 15 (determinate)	N/A (Not Available)	6 - 15
Minimum	4 - 7 1/2 (Minimum = 1/2 of maximum sentence)	6/7 of determinate sentence	6/7 of determinate sentence	6/7 of determinate sentence	6/7 of determinate sentence		3 - 7 1/2 (Minimum = 1/2 of maximum sentence)
Class D Felony							
Maximum	5 - 7	5 - 7 (determinate)	3 - 7 (determinate)	3 - 7 (determinate)	4 - 7 (determinate)	N/A (Not Available)	4 - 7
Minimum	2 1/2 - 3 1/2 (Minimum = 1/2 of maximum)	6/7 of determinate sentence	6/7 of determinate sentence	6/7 of determinate sentence	6/7 of determinate sentence		2 - 3 1/2 (Minimum = 1/2 of maximum sentence)
Class E Felony							
Maximum	4 years	3 - 4 (determinate)	2 - 4 (determinate)	2 - 4 (determinate)	2 1/2 - 4 (determinate)	N/A (Not Available)	3 - 4
Minimum	2 years (Minimum = 1/2 of maximum)	6/7 of determinate sentence	6/7 of determinate sentence	6/7 of determinate sentence	6/7 of determinate sentence		1 1/2 - 2 (Minimum = 1/2 of maximum sentence)

¹ For offenders in this category, both the instant offense and at least one prior offense are violent felony crimes. Where the instant offense is a violent felony crime and the prior offense is not a violent crime, the sentence ranges used by the court (for class B through E) would be those listed under "Violent Second Felony Offense."

² Sentences pursuant to the Sex Offender Management and Treatment Act (SOMTA) took effect on April 13, 2007.

³ Under Penal Law 70.07 ("Sentence of Imprisonment for Second Child Sexual Assault Felony Offender"), there are various enhanced sentences for such child sexual assault felonies, where the victim is a child less than fifteen years old. Certain sentences must be indeterminate, whereas certain other sentences must be determinate (see chart A-5 for specification of such enhanced sentences).

APPENDIX A-3: SENTENCES TO PRISON FOR DRUG FELONY OFFENSE
RANGE OF MINIMUM AND MAXIMUM SENTENCES ACCORDING TO FELONY CLASS CATEGORY

FELONY CLASS	1st Felony Drug Offender (Prior to Jan. 2005)	1st Felony Drug Offender (After Jan. 2005) ²	2nd Felony Drug Offender (Has Prior Violent Felony Conviction) (After Jan. 2005) ⁴	2nd Felony Drug Offender (No Prior Violent Felony Conviction) (Jan. 2005 to Apr. 2009) ⁴	2nd Felony Drug Offender (No Prior Violent Felony Conviction) (After Apr. 2009) ⁵
A-I Felony					
Maximum	Life	8 - 20 (determinate)	15 - 30 (determinate)	12 - 24 (determinate)	12 - 24 (determinate)
Minimum	15 - 25 years (for offenders with Life maximum) (minimum sentence fixed by court)	6/7 of determinate sentence	6/7 of determinate sentence	6/7 of determinate sentence	6/7 of determinate sentence
A-II Felony					
Maximum	Life	3 - 10 (determinate)	8 - 17 (determinate)	6-14 (determinate)	6-14 (determinate)
Minimum	3 - 8 1/3 (minimum sentence fixed by court)	6/7 of determinate sentence	6/7 of determinate sentence	6/7 of determinate sentence	6/7 of determinate sentence
Class B Felony					
Maximum	3 - 25 ¹	1 - 9 (determinate) ³	6 - 15 (determinate)	3 1/2 - 12 (determinate)	2 - 12 (determinate)
Minimum	1 - 8 1/3 (Minimum = 1/3 of maximum sentence)	6/7 of determinate sentence	6/7 of determinate sentence	6/7 of determinate sentence	6/7 of determinate sentence
Class C Felony					
Maximum	3 - 15	1 - 5 1/2 (determinate)	3 1/2 - 9	2 - 8 (determinate)	1 - 8 (determinate)
Minimum	1 - 5 (Minimum = 1/3 of maximum sentence)	6/7 of determinate sentence	6/7 of determinate sentence	6/7 of determinate sentence	6/7 of determinate sentence
Class D Felony					
Maximum	3 - 7	1 - 2 1/2 (determinate)	2 1/2 - 4 1/2	1 1/2 - 4 (determinate)	1 1/2 - 4 (determinate)
Minimum	1 - 2 1/3 (Minimum = 1/3 of maximum sentence)	6/7 of determinate sentence	6/7 of determinate sentence	6/7 of determinate sentence	6/7 of determinate sentence
Class E Felony					
Maximum	3 - 4	1 - 1 1/2 (determinate)	2 - 2 1/2	1 1/2 - 2 (determinate)	1 1/2 - 2 (determinate)
Minimum	1 - 1 1/3 (Minimum = 1/3 of maximum sentence)	6/7 of determinate sentence	6/7 of determinate sentence	6/7 of determinate sentence	6/7 of determinate sentence

¹ For Class B Sale of Drugs on School Grounds (committed before January 13, 2005) the maximum sentence range is 6 - 25 years. The minimum is 1/3 the maximum sentence.

² Sentences pursuant to Drug Law Reform Act of 2004, effective January 13, 2005.

³ For Class B Sale of Drugs on School Grounds (committed after January 13, 2005), the range of determinate sentences is 2 to 9 years.

⁴ Sentences pursuant to Drug Law Reform Act of 2004, signed December 2004, effective date for new sentences January 13, 2005.

⁵ Sentences pursuant to the Drug Law Reform Act of 2009 took effect on April 7, 2009.

APPENDIX A-4: SENTENCES TO STATE PRISON FOR PERSISTENT FELONY OFFENSES
RANGE OF MINIMUM AND MAXIMUM SENTENCES ACCORDING TO FELONY CLASS CATEGORY
(Sentencing as a Persistent Felon Unavailable for Drug Offenders after January 2005)¹

FELONY CLASS	VIOLENT FELONY OFFENSE (1978 - 1995)²	VIOLENT FELONY OFFENSE (After Oct. 1995)²	PREDATORY SEXUAL ASSAULT (After Apr. 2007)⁴	ALL OTHER FELONY OFFENSES³
Class A-2 Felony				
Maximum	N/A (Not Available)	N/A (Not Available)	Life	N/A (Not Available)
Minimum	N/A (Not Available)	N/A (Not Available)	10 - 25 (minimum sentence fixed by court)	N/A (Not Available)
Class B Felony				
Maximum	Life	Life	N/A (Not Available)	9 - 25 Life Optional
Minimum	10 - 25 (minimum sentence fixed by judge)	20 - 25 (minimum sentence fixed by judge)	N/A (Not Available)	4 1/2 - 12 1/2 (Minimum = 1/2 of maximum sentence)
Class C Felony				
Maximum	Life	Life	N/A (Not Available)	6 - 15 Life Optional
Minimum	8 - 25 (minimum sentence fixed by judge)	16 - 25 (minimum sentence fixed by judge)	N/A (Not Available)	3 - 7 1/2 (Minimum = 1/2 of maximum sentence)
Class D Felony				
Maximum	Life	Life	N/A (Not Available)	4 - 7 Life Optional
Minimum	6 - 25 (minimum sentence fixed by judge)	12 - 25 (minimum sentence fixed by judge)	N/A (Not Available)	2 - 3 1/2 (Minimum = 1/2 of maximum sentence)
Class E Felony				
Maximum	Life	Life	N/A (Not Available)	3 - 4 Life Optional
Minimum	Statute does not specify minimum term	Statute does not specify minimum term	N/A (Not Available)	1 1/2 - 2 (Minimum = 1/2 of maximum sentence)

¹ Sentencing as a "Persistent Felon Offender" was no longer available for drug offenders whose drug crime was committed after January 13, 2005 pursuant to Drug Law Reform Act of 2004.

² To be sentenced as a "Persistent Violent Felony Offender," the instant offense and at least two prior offenses must be legislatively designated violent felonies.

³ A person convicted of a third felony could be sentenced as a second felony offender.

⁴ Sentences pursuant to the Sex Offender Management and Treatment Act (SOMTA) took effect on April 13, 2007.

**APPENDIX A-5: RANGE OF MINIMUM AND MAXIMUM
SENTENCES BY FELONY CLASS CATEGORY
JUVENILE OFFENDERS**

AGES	CRIME CLASSIFICATION	SPECIFIC CRIME	MINIMUM SENTENCE RANGE	MAXIMUM SENTENCE RANGE
13	A-I	Murder 2nd (except Felony Murder)	5 - 9 Years	Life
14, 15	A-I	Murder 2nd (Felony Murder included but restricted to felonies listed below)	5 - 9 Years	Life
14, 15	A-I	Arson 1st Kidnapping 1st	4 - 6 Years	12 - 15 Years
14, 15	B-Violent	Aggravated Sexual Abuse Arson 2nd Attempt Kidnapping 1st Attempt Murder 2nd Burglary 1st Manslaughter 1st Rape 1st (non-consensual) Robbery 1st Sodomy 1st (non-consensual)	1/3 Maximum Sentence	3 - 10 Years
14, 15	C-Violent	Assault 1st (intentional) Burglary 2nd (weapon or injury) Robbery 2nd (weapon or injury)	1/3 Maximum Sentence	3 - 7 Years

APPENDIX A-6: Range of Sentences Under Second Child Sexual Assault

Current Conviction - Sexual Assault Against a Child	If Prior Felony Conviction was for Sexual Assault Against a Child	Then Sentence Must Be:
Class B Felony	Class B or C Felony	Indeterminate: 15 - 25 to Life
Class B Felony	Class D or E Felony	Determinate: 12 to 30 years
Class C Felony	Class B or C Felony	Determinate: 12 to 30 years or Indeterminate: 15 - 25 years
Class C Felony	Class D or E Felony	Determinate: 10 to 25 years
Class D Felony	Any Felony	Determinate: 5 to 15 years
Class E Felony	Any Felony	Determinate: 4 to 12 years

¹ Penal Law 70.07 became effective February 1, 2001.

APPENDIX B

CRIME CODE TABLE

The Crime Code Table presents various criminal offenses specified in the New York State Penal Law as well as other State statutes. The Penal Law section is indicated along with the effective dates for this section. For felony offenses the felony class is also indicated. The offenses are arranged by order of the unique crime code used by the Department of Correctional Services. In addition, a crime type designation is provided. These types include: VFO – violent felony offenses as designated in the Penal Law; CVO – other crimes of a coercive/violent nature not designated as a VFO; PDO – property, drug and other felonies; MIS – misdemeanors; VIO – violations.

Crime Codes (Sorted by: Crime Code)
 NYS Department of Corrections and Community Supervision
 Prepared on 26 Apr 12 by RHK

Crime Code	Crime Description	Effective Date	Repeal Date	Legal Authority	Crime Class	Crime Type
100	MURDER (DEG'LESS PRIOR 9-1-74)	19670901	19740831	PL 125.25	A	VFO
101	MURDER 1ST	19740901		PL 125.27	A	VFO
102	MURDER 2ND	19740901		PL 125.25	A	VFO
103	AGGRAVATED MURDER	20051221		PL 125.26	A	VFO
201	MANSLAUGHTER 1ST	19780901		PL 125.2	B	VFO
202	MANSLAUGHTER 2ND	19670901		PL 125.15	C	CVO
203	ABORTION 1ST	19670901		PL 125.45	D	CVO
204	ABORTION 2ND	19670901		PL 125.4	E	CVO
205	AGGRAV MANSLAUGHTER 1ST DEGREE	20051221		PL 125.22	B	VFO
206	AGGRAV MANSLAUGHTER 2ND DEGREE	20051221		PL 125.21	C	VFO
300	CRIM NEGLIGENCE HOMICIDE	19670901		PL 125.1	E	CVO
301	VEHICULAR MANSLAUGHTER 2ND	19851101		PL 125.12	D	CVO
302	VEHICULAR MANSLAUGHTER 1ST	19851101		PL 125.13	C	CVO
303	AGGRAV CRIM NEGLIGENCE HOMICIDE	20051221		PL 125.11	C	VFO
304	AGGR VEHICULAR HOMICIDE	20071101		PL 125.14	B	CVO
401	RAPE 1ST	19780901		PL 130.35	B	VFO
402	RAPE 2ND	19670901	20070412	PL 130.3	D	CVO
403	RAPE 3RD	19670901		PL 130.25	E	CVO
404	RAPE 2ND	20070413		PL 130.3	D	VFO
501	ROBBERY 1ST	19670901		PL 160.15	B	VFO
502	ROBBERY 2ND	19780901		PL 160.1	C	VFO
503	ROBBERY 3RD	19670901		PL 160.05	D	CVO
600	ASSAULT 1ST DEGREE	19961101		PL 120.1	B	VFO
601	ASSAULT 1ST	19670901	19961031	PL 120.1	C	VFO
602	ASSAULT 2ND	19670901		PL 120.05	D	VFO
604	RECKLESS ENDANGERMENT 1ST	19670901		PL 120.25	D	CVO
607	PROM A SUICIDE ATTEMPT	19670901		PL 120.3	E	CVO
608	AGGRAV ASSAULT/PEACE OFF.	19810702		PL 120.11	B	VFO
610	VEHICULAR ASSAULT 2ND	19851101		PL 120.03	E	CVO
611	VEHICULAR ASSAULT 1ST	19851101		PL 120.04	D	CVO
612	AGGR ASLT ON PERSON < 11 YRS	19901101		PL 120.12	E	CVO
613	MENACING 1ST	19921101		PL 120.13	E	CVO
614	GANG ASSAULT 1ST DEGREE	19961101		PL 120.07	B	VFO
615	GANG ASSAULT 2ND DEGREE	19961101		PL 120.06	C	VFO
616	ASLT:POLICE OFF/FIREMAN/EMT	19961101		PL 120.08	C	VFO
617	ASLT BY OPER OF A VESSEL	19860805		NAV 49	E	CVO
618	STALKING 1ST SUB 1	19991201		PL 120.6	D	VFO
619	STALKING 2ND DEGREE	19991201		PL 120.55	E	CVO
621	MENACING POLICE/PEACE OFFICER	20051221		PL 120.18	D	VFO
622	RECKLESS ASSAULT OF A CHILD	20061101		PL 120.02	D	VFO
623	RECK ASLT CHILD:DAY CARE PROV	19981101		PL 120.01	E	CVO
624	LURING A CHILD TO COMMIT CRIME	20081004		PL 120.7	E	CVO
625	LURING A CHILD TO COMMIT B FEL	20081004		PL 120.7	D	CVO
626	LURING A CHILD TO COMMIT A FEL	20081004		PL 120.7	C	CVO
627	AGGRAVATED VEHICULAR ASSAULT	20071101		PL 120.04-A	C	CVO
628	STALKING 1ST SUB 2	19991201		PL 120.6	D	CVO
630	LV SCENE OF ACCIDENT - BOAT	19860805		NAV 47	E	CVO
631	STRANGULATION 1ST DEGREE	20101111		PL 121.13	C	VFO
632	STRANGULATION 2ND DEGREE	20101111		PL 121.12	D	VFO
701	BURGLARY 1ST	19780901		PL 140.3	B	VFO
702	BURGLARY 2ND	19670901		PL 140.25	C	VFO
703	BURGLARY 3RD	19670901		PL 140.2	D	PDO

Crime Codes (Sorted by: Crime Code)
 NYS Department of Corrections and Community Supervision
 Prepared on 26 Apr 12 by RHK

Crime Code	Crime Description	Effective Date	Repeal Date	Legal Authority	Crime Class	Crime Type
800	FAIL TO REG:SEX OFF 1ST OFF	19960121	20070816	COR 0168-T	A	CVO
801	SEX OFFENDER REG VIOL-2ND OFF	19960121	.	COR 0168-T	D	CVO
802	SEX OFFENDER REG VIOL-1ST OFF	20070817	.	COR 0168-T	E	CVO
1001	GRAND LARCENY - NOT AUTO 1ST	19670901	19861031	PL 155.4	C	PDO
1002	GRAND LARCENY - NOT AUTO 2ND	19670901	19861031	PL 155.35	D	PDO
1003	GRAND LARCENY - NOT AUTO 3RD	19670901	19861031	PL 155.3	E	PDO
1004	GRAND LARCENY - NOT AUTO 1ST	19861101	.	PL 155.42	B	PDO
1005	GRAND LARCENY - NOT AUTO 2ND	19861101	.	PL 155.4	C	PDO
1006	GRAND LARCENY - NOT AUTO 3RD	19861101	.	PL 155.35	D	PDO
1007	GRAND LARCENY - NOT AUTO 4TH	19861101	.	PL 155.3	E	PDO
1010	COMPUTER TRESPASS	19861101	.	PL 156.1	E	PDO
1011	COMPUTER TAMPERING 1ST	19861101	19931031	PL 156.25	E	PDO
1012	UNLAW DUPLIC COMP RELATED MATL	19861101	.	PL 156.3	E	PDO
1013	CRIM POSS COMP RELATED MATL	19861101	.	PL 156.35	E	PDO
1014	WELFARE FRAUD-4TH DEGREE	19951101	.	PL 158.1	E	PDO
1015	WELFARE FRAUD-3RD DEGREE	19951101	.	PL 158.15	D	PDO
1016	WELFARE FRAUD-2ND DEGREE	19951101	.	PL 158.2	C	PDO
1022	CRIM POSS BENEFIT CARD-2ND	19951101	.	PL 158.45	D	PDO
1023	CRIM POSS BENEFIT CARD-3RD	19951101	.	PL 158.4	E	PDO
1031	COMPUTER TAMPERING 1ST	19931101	.	PL 156.27	C	PDO
1032	COMP TAMP-2ND:DEST DATA >\$3000	19931101	.	PL 156.26	D	PDO
1033	COMPUTER TAMPERING-3RD	19931101	.	PL 156.25	E	PDO
1301	GRAND LARCENY - AUTO 1ST	19670901	19861031	PL 155.4	C	PDO
1302	GRAND LARCENY - AUTO 2ND	19670901	19861031	PL 155.35	D	PDO
1303	GRAND LARCENY - AUTO 3RD	19670901	19861031	PL 155.3	E	PDO
1304	UNAUTH USE OF MV 1ST	19820901	.	PL 165.08	D	PDO
1305	UNAUTH USE OF MV 2ND	19820901	.	PL 165.06	E	PDO
1306	AUTO STRIPPING-1ST	19841101	19961031	PL 165.1	E	PDO
1307	GRAND LARCENY - AUTO 1ST	19861101	.	PL 155.42	B	PDO
1308	GRAND LARCENY - AUTO 2ND	19861101	.	PL 155.4	C	PDO
1309	GRAND LARCENY - AUTO 3RD	19861101	.	PL 155.35	D	PDO
1310	GRAND LARCENY - AUTO 4TH	19861101	.	PL 155.3	E	PDO
1311	AUTO STRIPPING-1ST	19961101	.	PL 165.11	D	PDO
1312	AUTO STRIPPING-2ND	19961101	.	PL 165.1	E	PDO
1401	CRIM POSS STOLEN PROP 1ST	19670901	19861031	PL 165.5	D	PDO
1402	CRIM POSS STOLEN PROP 2ND	19670901	19761031	PL 165.45	E	PDO
1404	UNLAW USE, SECRET SCI. MAT.	19670901	.	PL 165.07	E	PDO
1405	CRIM POSS STOLEN PROP 1ST	19861101	.	PL 165.54	B	PDO
1406	CRIM POSS STOLEN PROP 2ND	19861101	.	PL 165.52	C	PDO
1407	CRIM POSS STOLEN PROP 3RD	19861101	.	PL 165.5	D	PDO
1408	CRIM POSS STOLEN PROP 4TH	19861101	.	PL 165.45	E	PDO
1411	TRADEMARK COUNTERFEITING 1ST	19921101	.	PL 165.73	C	PDO
1412	TRADEMARK COUNTERFEITING 2ND	19921101	.	PL 165.72	E	PDO
1501	TAMPER W/ PUBLIC RECORDS 1ST	19670901	.	PL 175.25	D	PDO
1502	FALSIFY BUS RECORDS 1ST	19670901	.	PL 175.1	E	PDO
1503	OFFER FALSE INST FILING 1ST	19670901	.	PL 175.35	E	PDO
1504	ISSUING A FALSE CERTIFICATE	19670901	.	PL 175.4	E	PDO
1505	CRIM USURY 2ND	19760901	.	PL 190.4	E	PDO
1506	UNLAW CONCEALING A WILL	19670901	.	PL 190.3	E	PDO
1515	CRIM IMPERSONATION 1ST	19800901	.	PL 190.26	E	PDO
1520	CRIM USURY 1ST	19760901	.	PL 190.42	C	PDO
1521	SCHEME TO DEFRAUD 1ST	19770101	.	PL 190.65	E	PDO
1525	FAIL TO REG AS BROKER/ADVISOR	19591001	.	GB 359-E	E	PDO

Crime Codes (Sorted by: Crime Code)
 NYS Department of Corrections and Community Supervision
 Prepared on 26 Apr 12 by RHK

Crime Code	Crime Description	Effective Date	Repeal Date	Legal Authority	Crime Class	Crime Type
1526	CRIM USE ACCESS DEVICE-1ST	19961101 .		PL 190.76	E	PDO
1527	IDENTITY THEFT 1ST	20021101 .		PL 190.8	D	PDO
1528	IDENTITY THEFT 2ND DEGREE	20021101 .		PL 190.79	E	PDO
1529	UNLAWFUL POSS PERSONAL ID- 1ST	20021101 .		PL 190.83	D	PDO
1530	UNLAWFUL POSS PERSONAL ID- 2ND	20021101 .		PL 190.82	E	PDO
1531	MONEY LAUNDERING-1ST	20001101 .		PL 470.2	B	PDO
1532	MONEY LAUNDERING-2ND	20001101 .		PL 470.15	C	PDO
1533	MONEY LAUNDERING-3RD	20001101 .		PL 470.1	D	PDO
1534	MONEY LAUNDERING-4TH	20001101 .		PL 470.05	E	PDO
1535	MONEY LAUNDER-SUPPORT TERROR 1	20040723 .		PL 470.24	B	PDO
1536	MONEY LAUNDER-SUPPORT TERROR 2	20040723 .		PL 470.23	C	PDO
1537	MONEY LAUNDER-SUPPORT TERROR 3	20040723 .		PL 470.22	D	PDO
1538	MONEY LAUNDER-SUPPORT TERROR 4	20040723 .		PL 470.21	E	PDO
1539	OBSTRUCT GOVT ADMIN:SPRAY DEV	19961101 .		PL 195.08	D	PDO
1540	INSURANCE FRAUD 1ST	19811101	19861031	PL 176.2	D	PDO
1541	INSURANCE FRAUD 2ND	19811101	19861031	PL 176.15	E	PDO
1544	INSURANCE FRAUD 1ST	19861101 .		PL 176.3	B	PDO
1545	INSURANCE FRAUD 2ND	19861101 .		PL 176.25	C	PDO
1546	INSURANCE FRAUD 3RD	19861101 .		PL 176.2	D	PDO
1547	INSURANCE FRAUD 4TH	19861101 .		PL 176.15	E	PDO
1549	DEFRAUDING THE GOVERNMENT	19861101 .		PL 195.2	E	PDO
1550	ENTERPRISE CORRUPTION	19861101 .		PL 460.2	B	PDO
1551	FALSE RETURN - CORPORATE TAXES	19851101	20090406	TAX 1805	E	PDO
1552	FRAUD IN SALE OF SECURITIES	19820901 .		GB 352-C	E	PDO
1553	UNAUTH PRACTICE OF PROFESSION	19760823 .		ED 6512	E	PDO
1554	FALSE TAX RETURN - PERSONAL	19851101	20090406	TAX 1804	E	PDO
1555	REPEAT FAILURE:FILE PERSNL TAX	19851101	20090406	TAX 1802	E	PDO
1556	MONEY LAUNDERING 1ST	19881101	20001031	PL 470.15	D	PDO
1557	MONEY LAUNDERING 2ND	19881101	20001031	PL 470.1	E	PDO
1558	MISUSE OF FOOD STAMPS	19670901 .		SW 147	E	PDO
1559	CONTRACTS FOR MONOPOLY	19750701 .		GB 341	E	PDO
1560	MOTOR FUEL TAX-FELONY	19851101 .		TAX 1812	E	PDO
1561	REPEATED FAILURE TO FILE CORP	19851101	20090406	TAX 1803	E	PDO
1562	CIG TAX-POSS/TRANS>20K ILL CIG	20001114 .		TAX 1814	E	PDO
1563	LIEN LAW	19670901 .		LL 079-A	D	PDO
1564	UNAUTH COMM TO SOLICIT CONTRIB	19670901 .		EL 14-126	E	PDO
1565	CIG TAX-ATT TO EVADE OR DEFEAT	19851101 .		TAX 1814	E	PDO
1566	CIG TAX-POSS/TRANS>30K ILL CIG	20090407 .		TAX 1814	D	PDO
1570	AGGRAVATED INSURANCE FRAUD 4TH	19961009 .		PL 176.35	D	PDO
1572	RESIDENTIAL MORTGAGE FRAUD-2ND	20081101 .		PL 187.2	C	PDO
1578	HEALTH CARE FRAUD-4TH DEGREE	20061101 .		PL 177.1	E	PDO
1580	FALSE RETURNS/REPORTS NYC	19850101 .		AC Nov-04	E	PDO
1581	LEGISLATOR RECEIVING BRIBE	19670901 .		POL 76	D	PDO
1582	UNLAW FEE PAYMT LEG OFF EMPLOY	19670901 .		POL 77	E	PDO
1590	FRAUDULENT PRACTICES	19670901 .		WC 114	E	PDO
1592	CRIMINAL TAX FRAUD-2ND DEGREE	20090407 .		TAX 1805	C	PDO
1593	CRIMINAL TAX FRAUD-3RD DEGREE	20090407 .		TAX 1804	D	PDO
1594	CRIMINAL TAX FRAUD-4TH DEGREE	20090407 .		TAX 1803	E	PDO
1600	FORGERY 1ST	19670901 .		PL 170.15	C	PDO
1601	CRIM POSS FORGED INST 1ST	19670901 .		PL 170.3	C	PDO
1602	FORGERY 2ND	19670901 .		PL 170.1	D	PDO
1603	CRIM POSS FORGED INST 2ND	19670901 .		PL 170.25	D	PDO

Crime Codes (Sorted by: Crime Code)
 NYS Department of Corrections and Community Supervision
 Prepared on 26 Apr 12 by RHK

Crime Code	Crime Description	Effective Date	Repeal Date	Legal Authority	Crime Class	Crime Type
1604	CRIM POSS FORGERY DEVICES	19670901 .		PL 170.4	D	PDO
1608	UNLAW USING SLUGS 1ST	19670901 .		PL 170.6	E	PDO
1609	FORGERY OF VEHICLE ID. NUMBER	19710401 .		PL 170.65	E	PDO
1610	ILLEGAL POSS VEH ID NO PLATE	19710401 .		PL 170.7	E	PDO
1612	AGGRAVATED IDENTITY THEFT	20081104 .		PL 190.80-A	D	PDO
1700	ARSON 1ST	19710901 .		PL 150.2	A	VFO
1701	ARSON 2ND	19710901 .		PL 150.15	B	VFO
1702	ARSON 3RD	19710901 .		PL 150.1	C	CVO
1703	ARSON 4TH	19710901 .		PL 150.05	E	CVO
1711	AGGRAVATED USE PYROTECHNICS 1	20031101 .		PL 405.18	D	VFO
1801	PROM PROSTITUTION 1ST	19780901 .		PL 230.32	B	PDO
1802	PROM PROSTITUTION 2ND	19780901 .		PL 230.3	C	PDO
1803	PROM PROSTITUTION 3RD	19780901 .		PL 230.25	D	PDO
1807	PATRONIZING A PROSTITUTE 1ST	19780901 .		PL 230.06	D	CVO
1808	PATRONIZING A PROSTITUTE 2ND	19780901 .		PL 230.05	E	PDO
1814	COMPELLING PROSTITUTION	20051101 .		PL 230.33	B	PDO
1815	SEX TRAFFICKING	20071101 .		PL 230.34	B	PDO
1901	SODOMY 1ST	19670901	20031031	PL 130.5	B	VFO
1902	SODOMY 2ND	19670901	20031031	PL 130.45	D	CVO
1903	SODOMY 3RD	19670901	20031031	PL 130.4	E	CVO
1905	SEXUAL ABUSE 1ST	19670901 .		PL 130.65	D	VFO
1907	INCEST	19670901	20061031	PL 255.25	E	CVO
1910	AGGRAVATED SEXUAL ABUSE	19780901	19881031	PL 130.7	B	VFO
1911	AGGRAVATED SEXUAL ABUSE 1ST	19881101 .		PL 130.7	B	VFO
1912	AGGRAVATED SEXUAL ABUSE 2ND	19881101 .		PL 130.67	C	VFO
1913	AGGRAVATED SEXUAL ABUSE 3RD	19961101 .		PL 130.66	D	VFO
1914	COURSE SEX CONDUCT-CHILD 1ST	19960801 .		PL 130.75	B	VFO
1915	COURSE SEX CONDUCT-CHILD 2ND	19960801 .		PL 130.8	D	VFO
1916	FEMALE GENITAL MUTILATION	19971101 .		PL 130.85	E	CVO
1917	PERSISTENT SEXUAL ABUSE	20010201 .		PL 130.53	E	VFO
1918	FACILIT SEX OFF/CONTROL SUB	20010201	20070412	PL 130.9	D	PDO
1919	AGGRAVATED SEXUAL ABUSE 4TH	20010201	20070412	PL 130.65-A	E	PDO
1920	AGGRAVATED SEXUAL ABUSE 4TH	20070413 .		PL 130.65-A	E	VFO
1921	CRIM SEXUAL ACT 1ST	20031101 .		PL 130.5	B	VFO
1922	CRIM SEXUAL ACT 2ND	20031101	20070412	PL 130.45	D	CVO
1923	CRIM SEXUAL ACT 3RD	20031101 .		PL 130.4	E	CVO
1924	PREDATORY SEXUAL ASSAULT	20060623 .		PL 130.95	A	CVO
1925	PRED SEX ASSAULT AGAINST CHILD	20060623 .		PL 130.96	A	CVO
1926	INCEST-1ST DEGREE	20061101 .		PL 255.27	B	VFO
1927	INCEST- 2ND DEGREE	20061101 .		PL 255.26	D	CVO
1928	INCEST- 3RD DEGREE	20061101 .		PL 255.25	E	CVO
1929	CRIM SEXUAL ACT 2ND	20070413 .		PL 130.45	D	VFO
1930	FORCIBLE TOUCHING	20010201 .		PL 130.52	A	CVO
1938	FACILIT SEX OFF/CONTROL SUBST	20070413 .		PL 130.9	D	VFO
1959	SELL/ISSUE NY INSTRMNT W/O LIC	19670901 .		BL 650	E	PDO
2000	CRIM SALE DANGEROUS DRUG 1ST	19690901	19730831	PL 220.44	A	PDO
2001	CRIM SALE DANGEROUS DRUG 3RD	19670901	19690901	PL 220.3	D	PDO
2003	CRIM POSS DANGEROUS DRUG 5TH	19690901	19830831	PL 220.1	E	PDO
2004	CRIM POSS DANGEROUS DRUG 2ND	19690901	19730831	PL 220.22	B	PDO
2005	CRIM POSS DANGEROUS DRUG 3RD	19670901	19690831	PL 220.2	E	PDO
2006	CRIM POSS DANGEROUS DRUG 3RD	19690901	19730831	PL 220.2	C	PDO
2007	CRIM POSS DANGEROUS DRUG 1ST	19700424	19730831	PL 220.23	A	PDO
2008	USE OF DRUG PARAPHERNALIA 1ST	19670901 .		PL 220.55	D	PDO
2010	CRIM INJECT OF A NARC DRUG	19710901 .		PL 220.46	E	PDO

Crime Codes (Sorted by: Crime Code)
 NYS Department of Corrections and Community Supervision
 Prepared on 26 Apr 12 by RHK

Crime Code	Crime Description	Effective Date	Repeal Date	Legal Authority	Crime Class	Crime Type
2011	IMIT CONTROL SUBS-2ND VIOL	19820901 .		PHL 3383	E	PDO
2012	CRIM POSS PRECURSORS	19730901 .		PL 220.6	E	PDO
2013	CRIM SALE CONTR SUBSTANCE 1ST	19730901 .		PL 220.43	A	PDO
2014	CRIM POSS CONTR SUBSTANCE 1ST	19730901 .		PL 220.21	A	PDO
2015	CRIM SALE CONTR SUBSTANCE 2ND	19730901 .		PL 220.41	A	PDO
2016	CRIM POSS CONTR SUBSTANCE 2ND	19730901 .		PL 220.18	A	PDO
2017	CRIM SALE CONTR SUBSTANCE 3RD	19790901 .		PL 220.39	B	PDO
2018	CRIM POSS CONTR SUBSTANCE 3RD	19790901 .		PL 220.16	B	PDO
2019	CRIM SALE CONTR SUBSTANCE 4TH	19730901	19790831	PL 220.37	B	PDO
2020	CRIM POSS CONTR SUBSTANCE 4TH	19730901	19790831	PL 220.12	B	PDO
2021	CRIM SALE CONTR SUBSTANCE 4TH	19790901 .		PL 220.34	C	PDO
2022	CRIM POSS CONTR SUBSTANCE 4TH	19790901 .		PL 220.09	C	PDO
2023	CRIM SALE CONTR SUBSTANCE 5TH	19790901 .		PL 220.31	D	PDO
2024	CRIM POSS CONTR SUBSTANCE 5TH	19790901 .		PL 220.06	D	PDO
2025	CRIM POSS CONTR SUBSTANCE 6TH	19790901	19851031	PL 220.05	E	PDO
2027	CRIM SALE MARIHUANA 1ST	19770729 .		PL 221.55	C	PDO
2028	CRIM POSS MARIHUANA 1ST	19770729 .		PL 221.3	C	PDO
2029	CRIM SALE MARIHUANA 2ND	19770729 .		PL 221.5	D	PDO
2030	CRIM POSS MARIHUANA 2ND	19770729 .		PL 221.25	D	PDO
2031	CRIM SALE MARIHUANA 3RD	19770729 .		PL 221.45	E	PDO
2032	CRIM POSS MARIHUANA 3RD	19770729 .		PL 221.2	E	PDO
2039	CRIM SALE CONTR SUB - SCHOOL	19861101 .		PL 220.44	B	PDO
2040	CRIM SALE PRESCRIPTION	19861101 .		PL 220.65	C	PDO
2041	CRIM POSS METH MANUF MATERIAL1	20051001 .		PL 220.71	E	PDO
2042	CRIM POSS PRECURSORS OF METH	20051001 .		PL 220.72	E	PDO
2043	UNLAWFUL MANUFACTURE METH-3RD	20051001 .		PL 220.73	D	PDO
2044	UNLAWFUL MANUFACTURE METH-2ND	20051001 .		PL 220.74	C	PDO
2045	UNLAWFUL MANUFACTURE METH-1ST	20051001 .		PL 220.75	B	PDO
2046	UNL DISPOSAL METH LAB MATERIAL	20051001 .		PL 220.76	E	PDO
2047	CRIM SALE CONTR SUBS TO CHILD	20091101 .		PL 220.48	B	PDO
2048	OPERATE MAJOR DRUG TRAFFICKER	20091101 .		PL 220.77	A	PDO
2049	USE CHILD COMMIT CONTR SUB OFF	20061101 .		PL 220.28	E	PDO
2091	CRIM SALE DANGEROUS DRUG 3RD	19690901	19730831	PL 220.35	C	PDO
2092	CRIM SALE CONTR SUBSTANCE 3RD	19730901	19790831	PL 220.39	A	PDO
2093	CRIM POSS CONTR SUBSTANCE 3RD	19730901	19790831	PL 220.16	A	PDO
2094	CRIM SALE DANGEROUS DRUG 2ND	19690901	19730831	PL 220.4	B	PDO
2095	CRIM POSS DANGEROUS DRUG 2ND	19670901	19690901	PL 220.15	D	PDO
2096	CRIM SALE DANGEROUS DRUG 2ND	19670901	19690831	PL 220.35	C	PDO
2097	CRIM POSS DANGEROUS DRUG 4TH	19690901	19730831	PL 220.15	D	PDO
2098	CRIM POSS CONTRL SUBST-6TH	19730901	19790831	PL 220.06	D	PDO
2099	CRIM SALE DANGEROUS DRUG 4TH	19690901	19730831	PL 220.3	D	PDO
2100	CRIM POSS WEAP 1ST	19740901 .		PL 265.04	B	VFO
2101	CRIM POSS WEAP 3RD SUB 4-8 VFO	19740901 .		PL 265.02	D	VFO
2102	MFG/TRANS/ETC DANGEROUS WEAPON	19670901 .		PL 265.1	D	CVO
2103	PROHIBITED USE OF WEAPONS	19670901 .		PL 265.35	D	CVO
2104	PROHIBITED USE OF WEAPONS	19740901 .		PL 265.35	E	CVO
2108	CRIM POSS WEAP 2ND	19780901 .		PL 265.03	C	VFO
2109	POSSESS DANGEROUS WEAPON-FEL	19670901	19740831	PL 265.05	D	VFO
2111	CRIM POSS WEAP 3RD SUB 1,2,3	19740901 .		PL 265.02	D	CVO

Crime Codes (Sorted by: Crime Code)
 NYS Department of Corrections and Community Supervision
 Prepared on 26 Apr 12 by RHK

Crime Code	Crime Description	Effective Date	Repeal Date	Legal Authority	Crime Class	Crime Type
2116	CRIM SALE FIREARM 3RD-DEG	20051221 .		PL 265.11	D	VFO
2117	CRIM SALE FIREARM 1ST-DEG	19991101 .		PL 265.13	B	VFO
2118	CRIM SALE FIREARM 2ND-DEG	19991101 .		PL 265.12	C	VFO
2119	CRIM SALE OF FIREARM 3 PRE-06	19991101	20051220	PL 265.11	D	CVO
2120	CRIM SALE FIREARM/AID MINOR	19991101 .		PL 265.14	C	VFO
2121	CRIM USE OF FIREARMS 1ST	19800812 .		PL 265.09	B	VFO
2122	CRIM USE OF FIREARMS 2ND	19800812 .		PL 265.08	C	VFO
2123	CRIM SALE FIREARM 1ST	19800812	19911031	PL 265.12	D	VFO
2124	CRIM SALE FIREARMS 2ND	19800812	19911031	PL 265.11	E	CVO
2125	UNLAW WEARING BODY VEST	19841101 .		PL 270.2	E	CVO
2126	POSSESS EXPLOSIVES W O LIC	19840901 .		LAB 458	D	PDO
2127	CRIM SALE FIREARM 1ST DEG	19911101	19991031	PL 265.13	C	VFO
2128	CRIM SALE FIREARM 2ND DEG	19911101	19991031	PL 265.12	D	VFO
2129	CRIM SALE FIREARM 3RD DEG	19911101	19991031	PL 265.11	E	CVO
2130	CRIM SALE FIREARM/AID OF MINOR	19911101	19991031	PL 265.14	D	VFO
2131	ILGL STORAGE OF EXPLOSIVES	19840901 .		LAB 453	E	PDO
2132	ILGL CONSTR/MAINT OF MAGAZINE	19840901 .		LAB 454	E	PDO
2140	CRIM SALE FIREARM TO A MINOR	19991101 .		PL 265.16	C	CVO
2141	FLEE OFFICER IN MOTOR VEH- 2ND	20061101 .		PL 270.3	E	CVO
2142	FLEE OFFICER IN MOTOR VEH- 1ST	20061101 .		PL 270.35	D	CVO
2202	DWI:ALCOHOL OR DRUGS 2 OFF	19881101 .		VTL 1192	E	PDO
2203	DWI:ALCOHOL OR DRUGS 3RD OFF	19961101 .		VTL 1192	D	PDO
2204	AGGRAV DWI:1 PRIOR CONV-10 YRS	20061101 .		VTL 1192	E	PDO
2205	AGGRAV DWI:2 PRIOR CONV-10 YRS	20061101 .		VTL 1192	D	PDO
2206	AGG DWI:WITH CHILD-1ST OFFENSE	20091218 .		VTL 1192	E	PDO
2300	OBSCENITY 2ND	19820901 .		PL 235.06	E	PDO
2301	OBSCENITY 1ST	19820901 .		PL 235.07	D	PDO
2302	DISSEM INDECENT MAT. TO MINORS	19690901	19961031	PL 235.21	E	PDO
2306	DISSEM INDECENT MAT MINOR 1ST	19961101 .		PL 235.22	D	PDO
2307	DISSEM INDECENT MAT MINOR 2ND	19961101 .		PL 235.21	E	PDO
2400	ABANDONMENT OF CHILD	19670901 .		PL 260	E	CVO
2402	NON-SUPPORT CHILD 1ST DEGREE	19970901 .		PL 260.06	E	PDO
2501	USE OF CHILD IN A SEXUAL PERF	19771109 .		PL 263.05	C	CVO
2502	PROM OBSCENE SEX PERF BY CHILD	19771109 .		PL 263.1	D	CVO
2503	PROM SEXUAL PERF BY A CHILD	19771109 .		PL 263.15	D	CVO
2507	POSS OBSCENE SEX PERF BY CHILD	19961101 .		PL 263.11	E	CVO
2508	POSS A SEX PERF BY A CHILD	19961101 .		PL 263.16	E	CVO
2509	FACILITATE SEX PERFRM BY CHILD	20081101 .		PL 263.3	B	CVO
2511	ENDANG VUL/ELDER:1ST DEGREE	19981101 .		PL 260.34	D	CVO
2512	ENDANG VUL/ELDER: 2ND DEGREE	19981101 .		PL 260.32	E	CVO
2600	MFG/SALE ILLICIT ALC BEV SUBSQ	19670901 .		ABC 155	E	PDO
2705	ANIMAL FIGHTING-FELONY	19841101 .		AM 351	E	PDO
2706	THEFT OF SERVICES	19921101 .		PL 165.15	E	PDO
2802	DRIV IMP/DRUGS-SUBSQ OFFENSE	19881101 .		VTL 1192	E	PDO
2803	DRIV IMP/DRUGS 3RD OFF	19961101 .		VTL 1192	D	PDO
2903	LV SCENE OF ACC W/O REPORTING	19800901 .		VTL 600	E	PDO
2904	AGGR UNLIC OPER VTL511.3 1ST	19851101 .		VTL 511	E	PDO
2905	UNLICENSED VEHICLE DISMANTLING	19841101	19961031	PL 165.1	E	PDO
2906	SELL MV/TRLR/PART W/CHANG NUMB	19830727 .		VTL 421	E	PDO
2907	MAKE FALSE REPORT RE STOLEN MV	19670901 .		VTL 426	E	PDO
2908	OFFENSES RE CERT OF TITLE	19720701 .		VTL 2130	E	PDO

Crime Codes (Sorted by: Crime Code)
 NYS Department of Corrections and Community Supervision
 Prepared on 26 Apr 12 by RHK

Crime Code	Crime Description	Effective Date	Repeal Date	Legal Authority	Crime Class	Crime Type
2909	UNLAW VEHICLE DISMANTLER	19800901 .		VTL 0415-A	E	PDO
2910	LV SCENE OF ACCIDENT - DEATH	20051101 .		VTL 600	D	PDO
3009	FALSELY REPORTING INCIDENT 1ST	19770901	20010916	PL 240	E	PDO
3010	PLACING A FALSE BOMB-1ST	19991201	20010916	PL 240.62	E	PDO
3011	FALSELY REPORTING INCIDENT-1ST	20010917 .		PL 240.6	D	VFO
3012	FALSELY REPORTING INCIDENT-2ND	20010917 .		PL 240.55	E	VFO
3013	AGGR HARASSMENT 1ST	19820901 .		PL 240.31	E	PDO
3014	CRIM NUISANCE 1ST	19891101 .		PL 240.46	E	PDO
3015	AGG HAR:EMPLOYEE BY INMATE	19960607 .		PL 240.32	E	PDO
3016	PLACING FALSE BOMB	20010917 .		PL 240.63	D	VFO
3017	PLACE FALSE BOMB-1ST	20010917 .		PL 240.62	D	VFO
3018	PLACE FALSE BOMB-2ND	20010917 .		PL 240.61	E	VFO
3021	HINDER PROSECUTION TERRORISM 1	20010917 .		PL 490.35	B	VFO
3022	HINDER PROSECUTION TERRORISM 2	20010917 .		PL 490.3	C	VFO
3023	SUPPORT ACT OF TERRORISM 1ST	20010917 .		PL 490.15	C	VFO
3024	SUPPORT ACT OF TERRORISM 2ND	20010917 .		PL 490.1	D	VFO
3025	MAKE TERRORISTIC THREAT	20010917 .		PL 490.2	D	VFO
3031	CRIM USE CHEM/BIOLOG WEAPON-1ST	20040727 .		PL 490.55	A	VFO
3032	CRIM USE CHEM/BIOLOG WEAPON-2ND	20040727 .		PL 490.5	A	VFO
3033	CRIM USE CHEM/BIOLOG WEAPON-3RD	20040727 .		PL 490.47	B	VFO
3034	CRIM POSS CHEM/BIOLOG WEAPON-1ST	20040727 .		PL 490.45	A	VFO
3035	CRIM POSS CHEM/BIOLOG WEAPON-2ND	20040727 .		PL 490.4	B	VFO
3036	CRIM POSS CHEM/BIOLOG WEAPON-3RD	20040727 .		PL 490.37	C	VFO
3301	PROM GAMB LOTT/POLICY 1ST	19670901 .		PL 225.1	E	PDO
3302	PROM GAMB BOOKMAKING 1ST	19670901 .		PL 225.1	E	PDO
3303	POSS GAMB RCDS LOTT/POLICY 1ST	19670901 .		PL 225.2	E	PDO
3304	POSS GAMB RCDS BOOKMAKING 1ST	19670901 .		PL 225.2	E	PDO
3401	CRIM MISCHIEF 2ND	19710901 .		PL 145.1	D	PDO
3402	CRIM MISCHIEF 3RD	19710901 .		PL 145.05	E	PDO
3404	CRIM TAMPERING 1ST	19670901 .		PL 145.2	D	PDO
3406	CRIM MISCHIEF 1ST	19710901 .		PL 145.12	B	PDO
3409	TAMPER W/ CONSUMER PROD 1ST	19861101 .		PL 145.45	E	PDO
3410	CEMETERY DESECRATION 1ST	19971101 .		PL 145.23	E	PDO
3501	CRIM TRESPASS 1ST	19690901 .		PL 140.17	D	PDO
3601	UNLAW POSS MEDICAL WASTE 1ST	19890707 .		ECL 71-4404	E	PDO
3602	UNLAW POSS HAZARDOUS WASTE 2ND	19810721 .		ECL 71-2707	E	PDO
3603	WILLFULLY SETS FOREST FIRE	19720901 .		ECL 09-1105	E	PDO
3604	ENDNGR PUB HLTH/SFTY/ENVRT 3RD	19861101 .		ECL 71-2712	E	PDO
3605	UNLAW RELEASE MED WASTE 2ND	19890722 .		ECL 71-4407	E	PDO
3606	RELEASE OF SOLID WASTE 2ND OFF	19960101 .		ECL 71-2703	E	PDO
3607	ENDNGR PUB HLTH/SFTY/ENVRT 1ST	19861101 .		ECL 71-2714	C	PDO
3901	ESCAPE 1ST	19670901 .		PL 205.15	D	PDO
3902	ESCAPE 2ND	19670901 .		PL 205.1	E	PDO
3904	ABSCOND FROM TEMP RELEASE 1ST	19720621 .		PL 205.17	E	PDO
3907	PROM PRISON CONTRABAND 1ST	19670901 .		PL 205.25	D	PDO
3909	HINDERING PROSECUTION 1ST	19670901 .		PL 205.65	D	PDO
3910	HINDERING PROSECUTION 2ND	19670901 .		PL 205.6	E	PDO
3912	ABSCOND COMMUNITY TREAT FAC	19860724 .		PL 205.19	E	PDO
4001	KIDNAPPING 1ST	19670901 .		PL 135.25	A	VFO

Crime Codes (Sorted by: Crime Code)
 NYS Department of Corrections and Community Supervision
 Prepared on 26 Apr 12 by RHK

Crime Code	Crime Description	Effective Date	Repeal Date	Legal Authority	Crime Class	Crime Type
4002	KIDNAPPING 2ND	19670901 .		PL 135.2	B	VFO
4003	UNLAW IMPRISONMENT 1ST	19670901 .		PL 135.1	E	CVO
4004	CUSTODIAL INTERFERENCE 1ST	19670901 .		PL 135.5	E	CVO
4005	SUBSTITUTION OF CHILDREN	19670901 .		PL 135.55	E	CVO
4006	COERCION 1ST	19670901 .		PL 135.65	D	CVO
4010	BODY STEALING	19670901 .	20061031	PHL 4216	E	PDO
4011	BODY STEALING	20061101 .		PHL 4216	D	PDO
4012	OPENING GRAVES	19971101 .	20061031	PHL 4218	E	PDO
4200	AGG. CRIMINAL CONTEMPT	19960901 .		PL 215.52	D	PDO
4201	BAIL JUMPING 2ND	19830908 .		PL 215.56	E	PDO
4202	TAMPER W/ PHYS EVIDENCE	19670901 .		PL 215.4	E	PDO
4203	CRIM CONTEMPT 1ST	19720901 .		PL 215.51	E	PDO
4204	UNLAW GRAND JURY DISCLOSURE	19770719 .		PL 215.7	E	PDO
4215	TAMPER W/ A WITNESS 3RD	19820901 .		PL 215.11	E	PDO
4216	TAMPER W/ A WITNESS 1ST	19820901 .		PL 215.13	B	PDO
4217	TAMPER W/ A WITNESS 2ND	19820901 .		PL 215.12	D	PDO
4218	BAIL JUMPING 1ST	19830908 .		PL 215.57	D	PDO
4300	BIGAMY	19670901 .		PL 255.15	E	PDO
4601	PERJURY 1ST	19670901 .		PL 210.15	D	PDO
4602	PERJURY 2ND	19670901 .		PL 210.1	E	PDO
4603	MAKE APP SWORN FALSE STATE 1ST	19670901 .		PL 210.4	E	PDO
4800	BRIBERY 2ND	19730901 .	19861031	PL 200	D	PDO
4801	BRIBERY 1ST	19730901 .		PL 200.04	B	PDO
4802	BRIBE REC 1ST	19730901 .		PL 200.12	B	PDO
4803	REWARDING OFF. MISCONDUCT 1ST	19730901 .		PL 200.22	C	PDO
4804	BRIBE REC 2ND	19730901 .	19861031	PL 200.1	D	PDO
4805	REC. REW., OFF. MISCONDUCT 1ST	19730901 .		PL 200.27	C	PDO
4806	REWARDING OFF. MISCONDUCT 2ND	19730901 .		PL 200.2	E	PDO
4807	REC. REW., OFF. MISCONDUCT 2ND	19730901 .		PL 200.25	E	PDO
4808	BRIBE REC BY A JUROR	19670901 .		PL 215.2	D	PDO
4809	BRIBE REC BY A WITNESS	19670901 .		PL 215.05	D	PDO
4810	BRIBING A JUROR	19851101 .		PL 215.19	D	PDO
4811	BRIBING A WITNESS	19670901 .		PL 215	D	PDO
4812	SPORTS BRIBING	19670901 .		PL 180.4	D	PDO
4813	SPORTS BRIBE RECEIVING	19670901 .		PL 180.45	E	PDO
4814	COMMERCIAL BRIBING 1ST	19830901 .		PL 180.03	E	PDO
4815	COMMERCIAL BRIBE REC 1ST	19830901 .		PL 180.08	E	PDO
4818	BRIBING A LABOR OFFICIAL	19670901 .		PL 180.15	D	PDO
4819	BRIBE REC BY A LABOR OFFICIAL	19670901 .		PL 180.25	D	PDO
4820	BRIBE GIVING FOR PUBLIC OFFICE	19670901 .		PL 200.45	D	PDO
4821	BRIBE REC FOR PUBLIC OFFICE	19670901 .		PL 200.5	D	PDO
4826	TAMPER W/ SPORTS CONTEST 1ST	19820926 .		PL 180.51	E	PDO
4827	IMP INTGRTY PARIMUTUEL BET 2ND	19820926 .		PL 180.52	E	PDO
4828	IMP INTGRTY PARIMUTUEL BET 1ST	19820926 .		PL 180.53	D	PDO
4829	INTIMIDATN, VICTIM/WITNESS 2ND	19851101 .		PL 215.16	D	VFO
4830	INTIMIDATN, VICTIM/WITNESS 3RD	19851101 .		PL 215.15	E	PDO
4831	BRIBERY 2ND	19861101 .		PL 200.03	C	PDO
4832	BRIBERY 3RD	19861101 .		PL 200	D	PDO
4833	BRIBE REC 2ND	19861101 .		PL 200.11	C	PDO
4834	BRIBE REC 3RD	19861101 .		PL 200.1	D	PDO

Crime Codes (Sorted by: Crime Code)
 NYS Department of Corrections and Community Supervision
 Prepared on 26 Apr 12 by RHK

Crime Code	Crime Description	Effective Date	Repeal Date	Legal Authority	Crime Class	Crime Type
4835	INTIMIDATN, VICTIM/WITNESS 1ST	19851101 .		PL 215.17	B	VFO
5301	CRIM DIVERSION PRESCRIP-1ST	19951101 .		PL 178.25	C	PDO
5302	CRIM DIVERSION PRESCRIP-2ND	19951101 .		PL 178.2	D	PDO
5303	CRIM DIVERSION PRESCRIP-3RD	19951101 .		PL 178.15	E	PDO
5400	EAVESDROPPING	19670901 .		PL 250.05	E	PDO
5407	UNLAWFUL SURVEILLANCE 1ST	20030811 .		PL 250.5	D	PDO
5408	UNLAW SURVEILLANCE 2ND(SUB 1)	20030811 .		PL 250.45	E	PDO
5409	UNLAW SURVEILLANCE 2ND(2,3,4)	20030811 .		PL 250.45	E	PDO
5410	DISSEM UNLAW SURV IMAGE 1ST	20030811 .		PL 250.6	E	PDO
6001	RIOT 1ST	19670901 .		PL 240.06	E	PDO
6002	CRIM ANARCHY	19670901 .		PL 240.15	E	PDO
6400	CONSPIRACY 1ST	19730901	19780831	PL 105.15	B	PDO
6401	CONSPIRACY 1ST	19780901 .		PL 105.17	A	VFO
6402	CONSPIRACY 2ND	19780901 .		PL 105.15	B	PDO
6403	CONSPIRACY 3RD	19780901 .		PL 105.13	D	PDO
6404	CONSPIRACY 4TH	19780901 .		PL 105.1	E	PDO
6500	CRIM SOLICITATION 1ST	19780901 .		PL 100.13	C	PDO
6501	CRIM SOLICITATION 2ND	19780901 .		PL 100.1	D	PDO
6502	CRIM SOLICITATION 3RD	19780901 .		PL 100.08	E	PDO
6600	CRIM FACILITATION 1ST	19780901 .		PL 115.08	B	PDO
6601	CRIM FACILITATION 2ND	19780901 .		PL 115.05	C	PDO
6602	CRIM FACILITATION 3RD	19780901 .		PL 115.01	E	PDO
6700	UNAUTH TRANSFER OF RECD SOUND	19901101 .		PL 275.1	E	PDO
6704	FAIL DISCLOSE ORIGIN REC-1ST	19901101 .		PL 275.4	E	PDO
6705	UNAUTH RECORDING-1ST:ADV SALE	19901101 .		PL 275.3	E	PDO
7001	JO - AGG SEXUAL ABUSE 1ST	19881101 .		PL 130.7	B	VFO
7002	JO - ARSON 1ST	19710901 .		PL 150.2	A	VFO
7003	JO - ARSON 2ND	19710901 .		PL 150.15	B	VFO
7004	JO - ASSAULT 1ST	19670901	19961031	PL 120.1	C	VFO
7005	JO - BURGLARY 1ST	19670901 .		PL 140.3	B	VFO
7006	JO - BURGLARY 2ND	19670901 .		PL 140.25	C	VFO
7007	JO - KIDNAPPING 1ST	19670901 .		PL 135.25	A	VFO
7008	JO - MANSLAUGHTER 1ST	19670901 .		PL 125.2	B	VFO
7009	JO - MURDER 2ND	19740901 .		PL 125.25	A	VFO
7010	JO - RAPE 1ST	19670901 .		PL 130.35	B	VFO
7011	JO - ROBBERY 1ST	19670901 .		PL 160.15	B	VFO
7012	JO - ROBBERY 2ND	19670901 .		PL 160.1	C	VFO
7013	JO - SODOMY 1ST	19670901	20031031	PL 130.5	B	VFO
7014	JO - ASSAULT 1ST DEGREE	19961101 .		PL 120.1	B	VFO
7015	JO - CRIM POSS WEAP 2ND SCHOOL	19981101 .		PL 265.03	C	VFO
7016	JO - CRIM POSS WEAP 3RD SCHOOL	19981101 .		PL 265.02	D	VFO
7017	JO - CRIMINAL SEXUAL ACT 1ST	20031101 .		PL 130.5	B	VFO
8000	YOUTHFUL OFFENDER	19841128 .				PDO
8001	YO - MURDER	19841128 .				VFO
8002	YO - MANSLAUGHTER	19841128 .				VFO
8003	YO - CRIM NEGLIGENCE HOMICIDE	19841128 .				CVO
8004	YO - RAPE	19841128 .				VFO
8005	YO - ROBBERY	19841128 .				VFO

Crime Codes (Sorted by: Crime Code)
 NYS Department of Corrections and Community Supervision
 Prepared on 26 Apr 12 by RHK

Crime Code	Crime Description	Effective Date	Repeal Date	Legal Authority	Crime Class	Crime Type
8006	YO - ASSAULT	19841128	.			VFO
8007	YO - BURGLARY	19841128	.			VFO
8010	YO - GRAND LARCENY (NOT AUTO)	19841128	.			PDO
8013	YO - GRAND LARCENY (AUTO)	19841128	.			PDO
8014	YO - CRIM POSS STOLEN PROP	19841128	.			PDO
8015	YO - FRAUD	19841128	.			PDO
8016	YO - FORGERY	19841128	.			PDO
8017	YO - ARSON	19841128	.			CVO
8018	YO - PROMOTING PROSTITUTION	19841128	.			PDO
8019	YO - SODOMY / SEXUAL ABUSE	19841128	20031031			VFO
8020	YO - DRUG OFFENSE	19841128	.			PDO
8021	YO - DANGEROUS WEAPONS	19841128	.			VFO
8022	YO - DRIVING WHILE INTOXICATED	19841128	.			PDO
8024	YO - ABANDMNT/NONSUPPORT CHILD	19841128	.			CVO
8026	YO - MFG/SALE ILLICIT ALC BEV	19841128	.			PDO
8028	YO - DRIVING WHILE IMP/DRUGS	19841128	.			PDO
8033	YO - PROG GAMB LOTTERY/POLICY	19841128	.			PDO
8034	YO - CRIMINAL MISCHIEF	19841128	.			PDO
8035	YO - CRIMINAL TRESPASS	19841128	.			PDO
8039	YO - ESC/ABS, RES. ARREST	19841128	.			PDO
8040	YO - KIDNAPPING	19841128	.			VFO
8042	YO - TAMPERING WITH A WITNESS	19900110	.			PDO
8043	YOUTHFUL OFFENDER - J.O.	19841128	.			VFO
8044	YO - CRIM SEXUAL ACT/SEX ABUSE	20031101	.			VFO
9501	ROBBERY 1ST (PRIOR 9/1/78)	19670901	19780831	PL 160.15	B	VFO
9502	ROBBERY 2ND (PRIOR 9/1/78)	19670901	19780831	PL 160.1	C	VFO
9503	RAPE 1ST (PRIOR 9/1/78)	19670901	19780831	PL 130.35	B	VFO
9504	SODOMY-1ST (PRIOR 9/1/78)	19670901	19780831	PL 130.5	B	VFO
9506	CRIM POSS WEAPON 2 PRE-9/1/78	19740901	19780831	PL 265.03	C	VFO
9507	MANSLAUGHTER 1ST(PRIOR 9/1/78)	19670901	19780831	PL 125.2	B	VFO
9508	BURGLARY 1ST (PRIOR 9/1/78)	19670901	19780831	PL 140.3	B	VFO
9509	MURDER 2ND PRE-9/1/78	19670901	19780831	PL 125.25	A	VFO

Prepared by:

**Stefania A. Maruniak
Program Research Specialist II
Program Planning, Research & Evaluation
November 2012**